

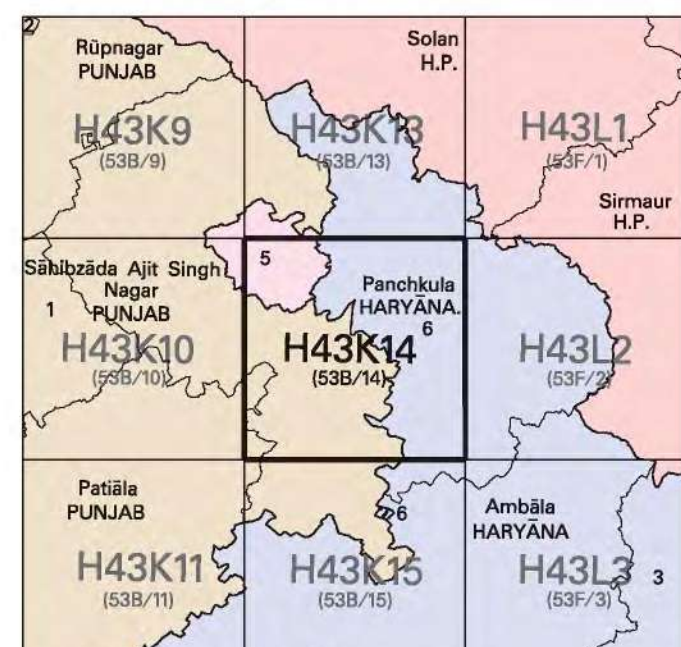


निर्यात के लिए नहीं NOT FOR EXPORT

OPEN SERIES
MAP

No. H43K14

Scale 1:50,000



1 Fatahgarh, Sahib, PUNJAB.
2 Nawanshahr, PUNJAB.
3 Yamunagar, HARYANA.
4 Kurukshetra, HARYANA.
5 Chandigarh, U.T.

भारतीय सर्वेक्षण विभाग SURVEY OF INDIA

1st Edition 2010. Price : Rs. 50/-

CONVENTIONAL SYMBOLS



REFERENCES

NH 73 National Highway No. 73. Chy Chimney.

NOTES

Heights are in metres and above Indian mean sea level.
Contours are approximate.
The administrative headquarters of Haryana and Punjab States are at Chandigarh.
The state boundaries between Chandigarh (U.T.) & Punjab, Chandigarh (U.T.) & Haryana, Haryana & Punjab States have been surveyed as pointed out by the local officials on the ground but has not been verified by the Government concerned.
Tanks, shown dry, in this area usually contain water from July to March.
Tube-wells are numerous in plain area of this sheet, only the important ones have been shown.
Sector numbers in Chandigarh, S.A.S. Nagar (Mohali) and Panchkula city areas are indicated by blue figures thus ... 10.
Cart-track along Baran Canal is motorable in dry season. Permission to use it is required from the Irrigation authorities.
The contours in this map have been shown at 10 metres vertical interval below 300 metres and 20 metres above it.
3,000-acre reclamation scheme of Bhakra Dam Project. Survey based on Origin 30° 00' N, 75° 15' E with their numbers are shown as tertiary bench-marks thus ... 10 228 BM 290.1.

COMPILATION INDEX

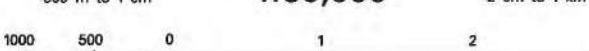
A. Compiled from 1:25,000 survey, 1985-86.
Updated for major details during 2005-06.



Projection - UTM Datum - WGS 84

Magnetic Variation from True North about 1° East in 2005.
(Increasing by about 1' annually).

1:50,000



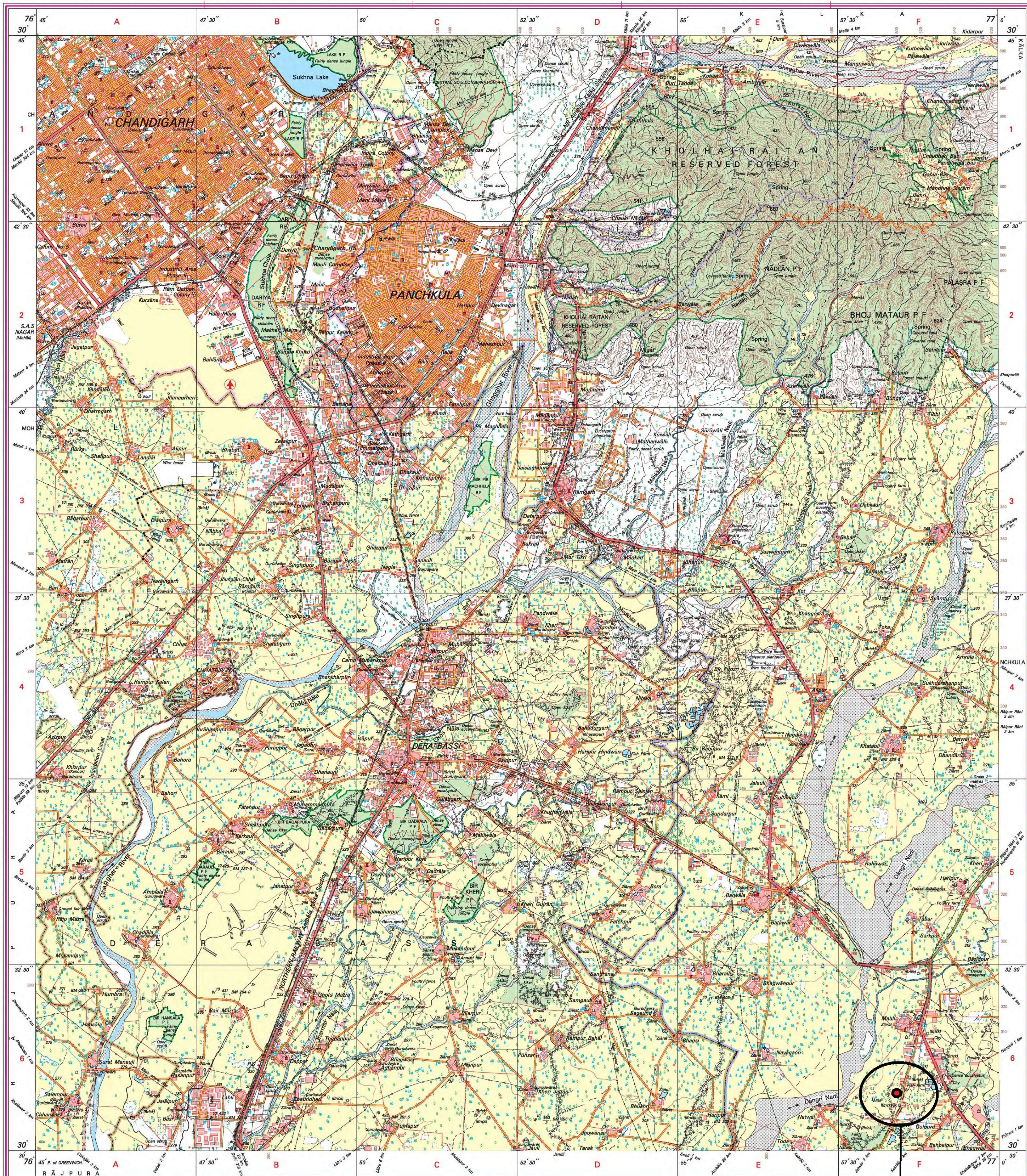
For further details about this map, please contact

Director
Punjab, Haryana & Chandigarh Geo-Spatial Data Centre
Survey of India, Sector 32 A
Chandigarh.
Fax : 0172 - 2604671

WEBSITE - www.surveyofindia.gov.in

Reproduction in whole or part by any means is prohibited
without the written permission of Survey of India, the
National Mapping Agency.

GOVERNMENT OF INDIA COPYRIGHT, 2010.



REG. No. - WPG D10 (P.H. & C. GDC-1:50,000)

भारत के महानिर्देशक के निदेशन में प्रकाशित,
Published under the direction of Surveyor General of India,
Survey of India, Hisharwala Estate, Post Box No. 37, Dera Dun-248001 (Uttarakhand),
Department of Science & Technology, Government of India.

PRINTED AT THE WESTERN PRINTING GROUP OF SURVEY OF INDIA.

Proposed Site of Landmark Crafts Pvt. Ltd.

For Landmark Crafts Pvt. Ltd.
Director

Vipin Lidoo, Director, Landmark Crafts Pvt. Ltd.