

No. F43Q5
Scale 1:50,000

F43K4 (55B/4)	F43K8 (55B/8)	F43K12 (55B/12)
F43Q1 (55C/1)	Khandwa (East Nimar) MADHYA PRADESH F43Q5 (55C/5)	F43Q9 (55C/9)
F43Q2 (55C/2)	F43Q6 (55C/6) Burmahpur MADHYA PRADESH	F43Q10 (55C/10)

1 Khargon (West Nimar), MADHYA PRADESH.

भारतीय सर्वेक्षण विभाग SURVEY OF INDIA

1st Edition 2010. Price: Rs. 64/-

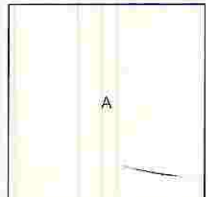
CONVENTIONAL SYMBOLS

Express highway with toll; with bridge with distance stone
Roads, metalled; according to importance
Roads, double carriageway; according to importance
Unmetalled road, Cart-track, Pack-track with pass, Foot-path
Streams with track in bed; undefined, Canal
Dams; masonry or rock-filled; earthenwork, Weir
River; dry with water channel; with island & rocks, Tidal river
Submerged rocks, Shoal, Swamp, Reeds
Wells; lined, unlined, Tube-well, Spring; Tanks; perennial, dry
Embankments; road or rail, bank, Broken ground
Railways, broad gauge; double, single with station; under constn.
Railways, other gauges; double, single with distance stone; do.
Mineral line or tramway, Kin. Cutting with tunnel
Contours with sub-features; Rocky slopes, Cliffs
Sand features (1) flat, (2) sand-hills (permanent), (3) dunes (shifting)
Towns or Villages; inhabited; deserted; Fort
Huts; permanent; temporary, Tower, Antiquities
Temples, Chhatris, Church, Mosque, Igah, Tomb, Graves
Lighthouse, Lightship, Buoys; lighted; unlighted, Anchorage
Mine, Vine on trellis, Grass, Scrub
Palms; palmry; other, Plantain, Coconut, Bamboo, Other trees
Areas; cultivated; wooded, Surveyed tree
Boundary; international
state; demarcated; undemarcated
district; subdivision; taluk or taluk; forest
Boundary pillars; surveyed; unlocated
Heights; triangulated; station; point; approximate
Bench-mark; geodetic; tertiary; canal
Post office, Telegraph office, Overhead tank
Rest house or inspection bungalow, Circuit house, Police station
Camping ground, Forest; reserved; protected
Spaced names; administrative; locality or tribal
Hospital, Dispensary, Veterinary; Hospital; Dispensary
Aerodrome, Helipad, Tourist site
Power line; with pylons surveyed; with poles unsurveyed

NOTES :-

Heights are in metres and above Indian mean sea level.
Contours are approximate.
A relative height, e.g., 3m, represents the approximate height, in metres, between the top and bottom of a steep slope.
The triangulated heights and contours in this sheet have not been adjusted to the heights of the spirit levelled bench-marks and may not be strictly in accordance with them.

COMPILATION INDEX



Projection - UTM Datum - WGS 84

Magnetic Variation from True North about 1° West in 2005; Survey of India, Jabalpur

1:50,000

Metres 1000 900 0 1 2 3 Kilometres

CONTOUR INTERVAL 20 METRES

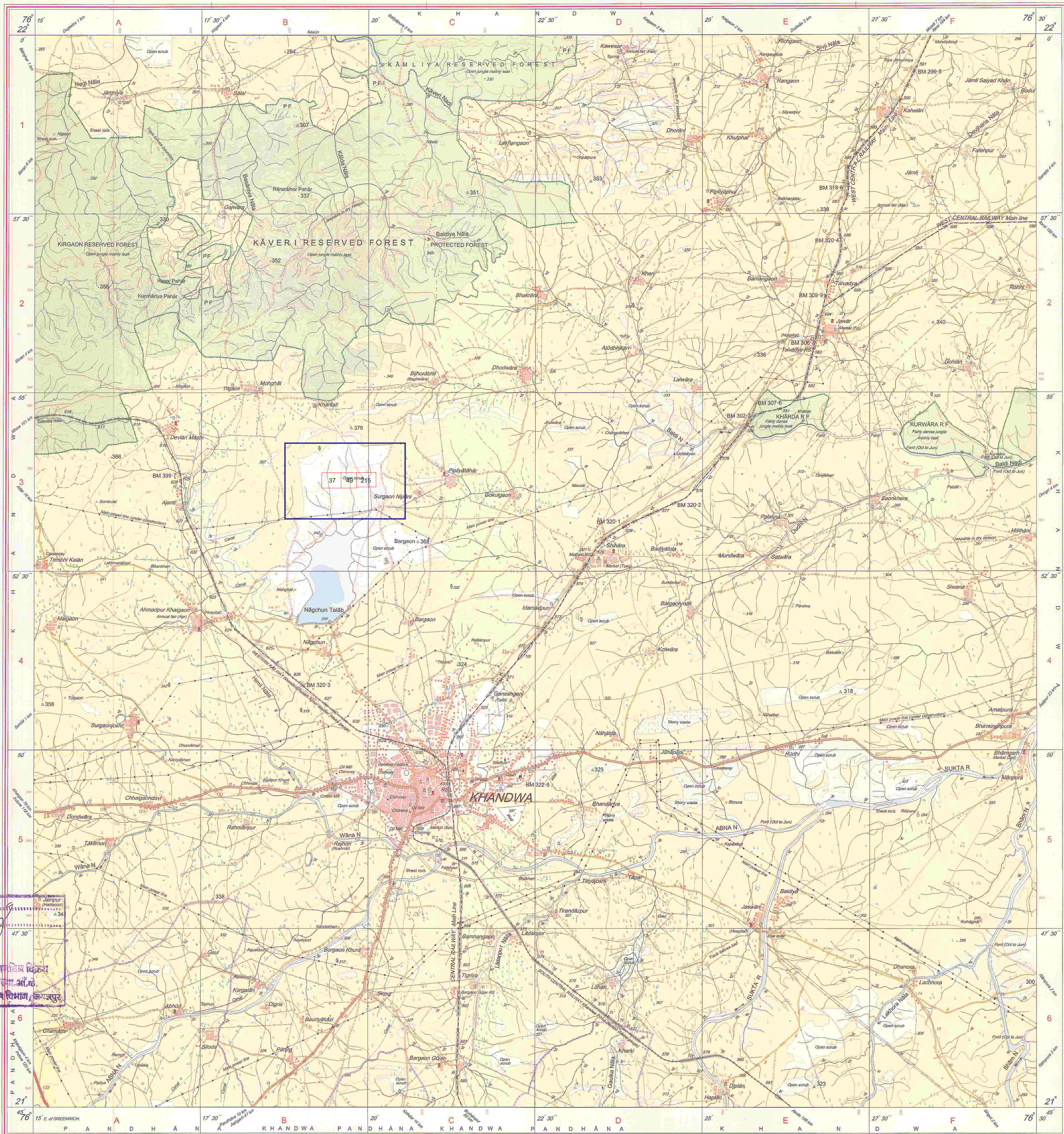
For further details about this map, please contact

Director
Madhya Pradesh Geo-Spatial Data Centre
Survey of India
Survey Colony, Vijaynagar,
Jabalpur.
Fax: 0761-2644683

WEBSITE - www.surveyofindia.gov.in

Reproduction in whole or part by any means is prohibited
without the written permission of Survey of India, the
National Mapping Agency.

GOVERNMENT OF INDIA COPYRIGHT, 2010.



REG. No. B940-SPG D/10 (Madhya Pradesh GDC:1:50,000)-1010.

भारत के सर्वेक्षण के निदेश में प्रकाशित.
Published under the direction of Surveyor General of India.
Survey of India, Hathibarkala Estate, Post Box No.37, Dehra Dun-248001 (Uttarakhand)
Department of Science & Technology, Government of India.

PRINTED AT THE SOUTHERN PRINTING GROUP OF SURVEY OF INDIA.