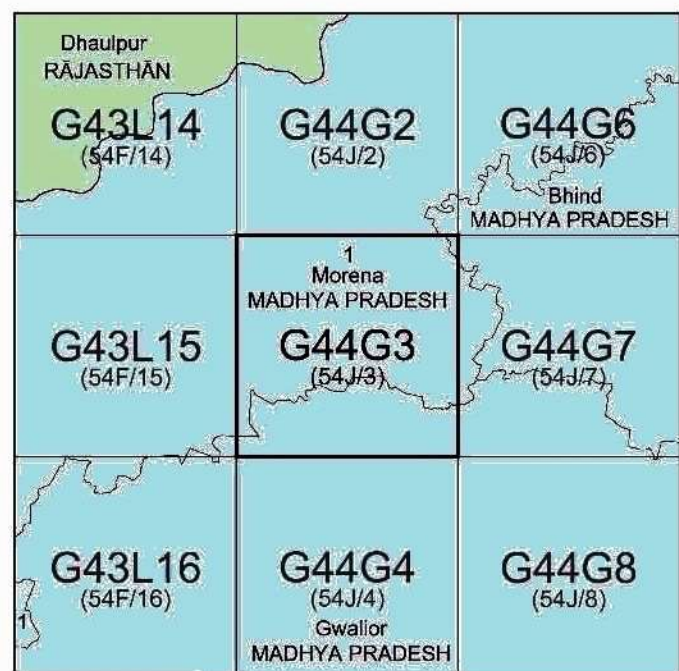


निर्यात के लिए नहीं NOT FOR EXPORT

OPEN SERIES  
MAP

No. G44G3

Scale 1:50,000



भारतीय सर्वेक्षण विभाग

SURVEY OF INDIA

1st Edition 2010

**Price : Rs. 50/-**

### CONVENTIONAL SYMBOLS



## REFERENCE

NH 92 National Highway No. 92

NOTES :-

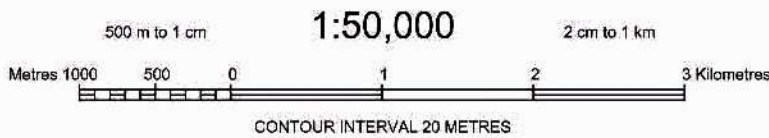
Heights are in metres and above Indian mean sea level.  
 Contours are approximate.  
 A relative height, e.g., -3, represents the approximate height, in metres, between the top and bottom of steep slope.  
 Pyku is a place where there is arrangement for serving drinking water.  
 The common boundary of the Reserved Forest between Barmir Basal RF and Kuala RF in square A5 and B5 has not been shown for want of reliable information.  
 Distance zones along Bind Mal Canal are 500 feet apart and every tenth stone is shown.  
 The Kilometre stone numbers along roads and railways are shown in slant type, e.g., '5' whereas milestone numbers are shown in upright type, e.g., '5'.

## COMPILATION INDEX

A. Surveyed during 1988-89; Updated for Rapid verification during 2004-05.

Projection - UTM Datum - WGS 84

Magnetic Variation from True North about  $3\frac{3}{4}^{\circ}$  East in 2005.  
(Increasing by about 1' annually).



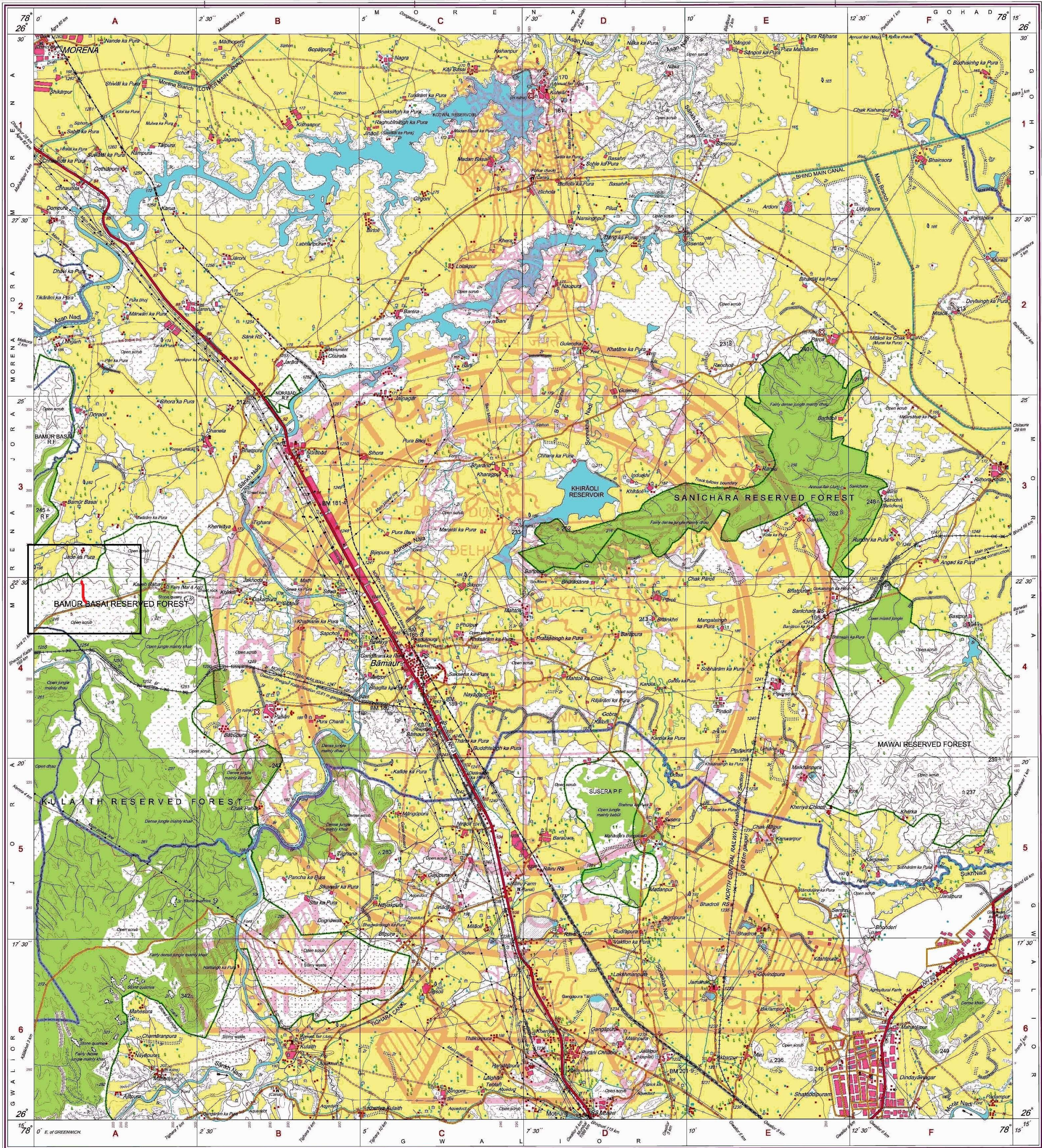
*For further details about this map, please contact*

Director  
Madhya Pradesh Geo-Spatial Data Centre  
Survey of India  
Survey Colony, Vijaynagar

WEBSITE - [www.surveyofindia.gov.in](http://www.surveyofindia.gov.in)

*Reproduction in whole or part by any means is prohibited without the written permission of Survey of India, the National Mapping Agency.*

GOVERNMENT OF INDIA COPYRIGHT, 2010.



REG. No. 9212 -SPG D'10 (Madhya Pradesh GDC-1:50,000)-1010'11

भारत के महासर्वेक्षक के निदेशन में प्रकाशित,  
Published under the direction of Surveyor General of India,  
Survey of India, Hāthībarkala Estate, Post Box No.37, Dehra Dūn-248001 (Uttarākhand)  
Department of Science & Technology, Government of India.

PRINTED AT THE SOUTHERN PRINTING GROUP OF SURVEY OF INDIA.