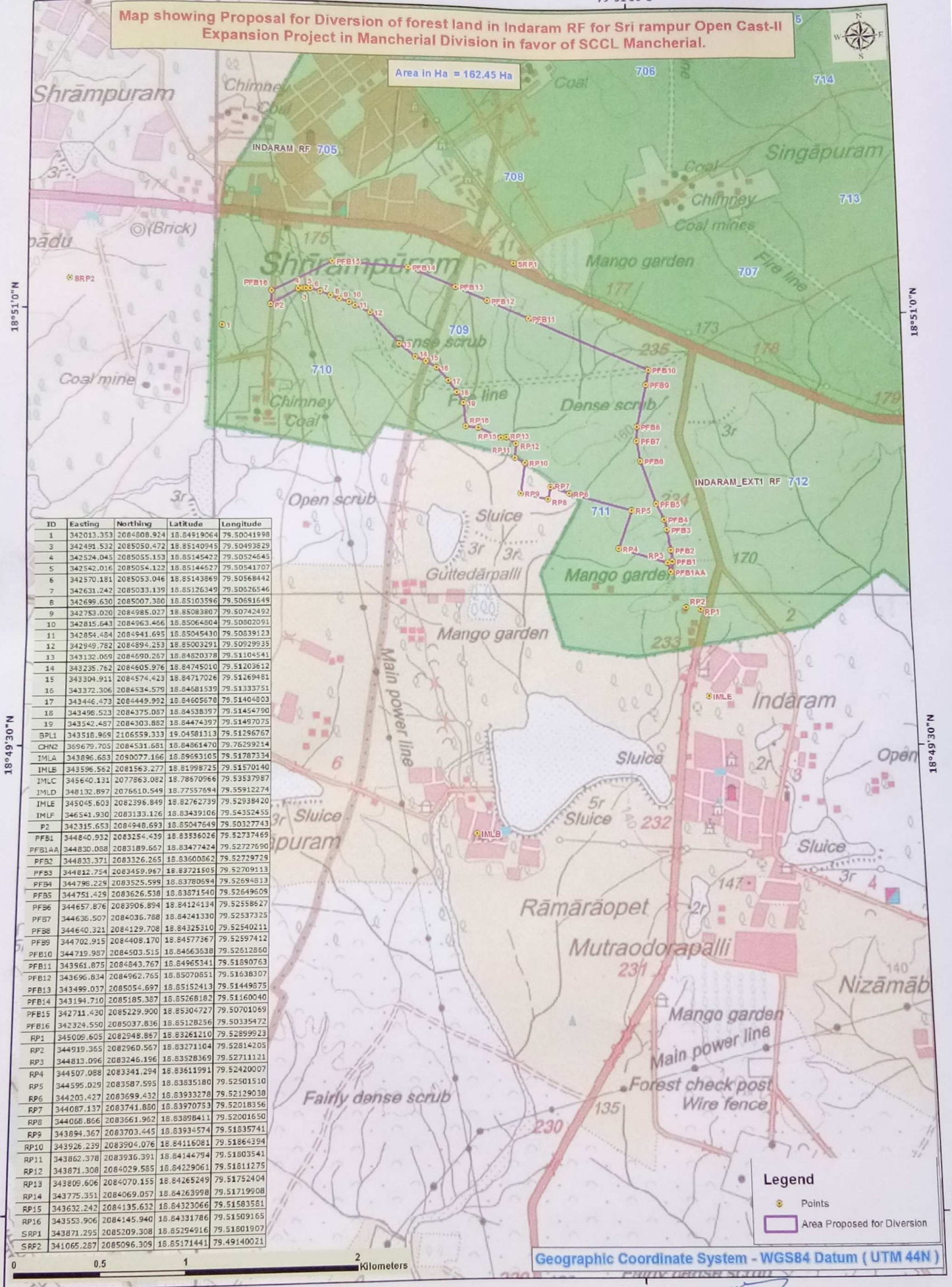


Map showing Proposal for Diversion of forest land in Indaram RF for Sri rampur Open Cast-II Expansion Project in Mancheril Division in favor of SCCL Mancheril.

Area in Ha = 162.45 Ha



ID	Easting	Northing	Latitude	Longitude
1	342013.353	2084808.924	18.84919064	79.50041998
2	342491.532	2085050.472	18.85140945	79.50493829
3	342524.045	2085055.153	18.85145427	79.50524645
4	342542.016	2085054.122	18.85144627	79.50541707
5	342570.181	2085053.046	18.85143869	79.50568442
6	342631.242	2085033.139	18.85126349	79.50526546
7	342699.630	2085007.380	18.85103596	79.50651649
8	342783.020	2084985.027	18.85083807	79.50742492
9	342815.643	2084963.456	18.85064804	79.50802091
10	342854.484	2084941.695	18.85045430	79.50839123
11	342949.782	2084894.253	18.85003291	79.50929935
12	343132.069	2084890.267	18.84820378	79.51104541
13	343235.762	2084605.976	18.84745010	79.51203612
14	343304.911	2084574.423	18.84717026	79.51269481
15	343372.306	2084534.579	18.84681539	79.51333751
16	343446.473	2084449.992	18.84605678	79.51404803
17	343496.523	2084375.057	18.84538397	79.51454790
18	343542.487	2084303.882	18.84474397	79.51497075
BP11	343516.969	2106559.333	19.04561313	78.51296767
CHN2	365979.705	2084531.681	18.84861470	79.76299214
IMLA	343896.683	2090077.166	18.89693105	78.51787334
IMLB	343596.562	2081563.277	18.81987253	79.51570140
IMLC	345640.131	2077863.082	18.78670966	79.52537987
IMLD	348132.897	2076510.549	18.77557694	79.55912274
IMLE	345045.603	2082396.849	18.82762739	79.52938420
IMLF	346541.930	2083133.126	18.83439106	79.54352455
P2	342315.653	2084948.693	18.85047649	78.50327743
PFB1	344840.932	2083254.439	18.83386026	79.52737469
PFB1AA	344830.088	2083189.657	18.83477424	79.52727690
PFB2	344833.371	2083326.265	18.83600862	79.52729723
PFB3	344812.754	2083459.967	18.83721505	79.52709113
PFB4	344796.229	2083525.599	18.83780594	79.52694813
PFB5	344751.429	2083626.538	18.83871540	79.52649609
PFB6	344657.876	2083906.894	18.84124134	79.52558627
PFB7	344636.507	2084036.788	18.84241330	79.52537325
PFB8	344640.321	2084129.708	18.84325310	79.52540211
PFB9	344702.915	2084408.170	18.84577367	79.52597412
PFB10	344719.987	2084503.515	18.84663538	79.52612860
PFB11	343961.875	2084843.767	18.84965341	79.51890763
PFB12	343696.834	2084962.765	18.85070851	79.51638037
PFB13	343499.037	2085054.697	18.85152413	79.51449875
PFB14	343194.710	2085185.357	18.85268182	79.51160040
PFB15	342711.430	2085229.900	18.85304727	79.50701069
PFB16	342324.550	2085037.836	18.85128256	79.50335472
RP1	345009.605	2082948.867	18.83261210	79.52899923
RP2	344919.365	2082960.567	18.83271104	79.52814205
RP3	344813.096	2083246.196	18.83528369	79.52711121
RP4	344507.088	2083341.294	18.83611991	79.52420007
RP5	344595.029	2083587.595	18.83835180	79.52501510
RP6	344205.427	2083699.432	18.83933278	79.52129038
RP7	344087.137	2083741.880	18.83970753	79.52018356
RP8	344068.856	2083561.952	18.83898411	79.52001650
RP9	343894.367	2083703.445	18.83934574	79.51835741
RP10	343926.239	2083904.076	18.84116081	79.51864394
RP11	343862.378	2083936.391	18.84144794	79.51803541
RP12	343871.308	2084029.585	18.84229061	79.51811275
RP13	343809.606	2084070.155	18.84265249	79.51752404
RP14	343775.351	2084069.057	18.84263998	79.51719908
RP15	343632.242	2084135.632	18.84323066	79.51583561
RP16	343553.906	2084145.940	18.84331786	79.51509165
SRP1	343871.295	2085209.308	18.85294916	79.51801907
SRP2	341065.287	2085096.309	18.85171441	79.49140021

Legend

- Points
- Area Proposed for Diversion

Geographic Coordinate System - WGS84 Datum (UTM 44N)

27/10
 General Manager
 Srirampur Area
 The S.C. Company Ltd.,
 Po, Srirampur Colony,
 Dist: Adilabad-504 303.

INDIA
REFER TO THIS MAP AS 1-1' 50,000
FIRST EDITION SHEET 56 N / 5

INDIA
REFER TO THIS MAP AS 1-1' 50,000
SHEET 56 N / 9 FIRST EDITION

Magnetic Variation from True North about - West in 1975.
(Decreasing by about 1' annually.)

No. 56 N
>DIL>B>D AND
KARIMNAGAR DISTRICTS.

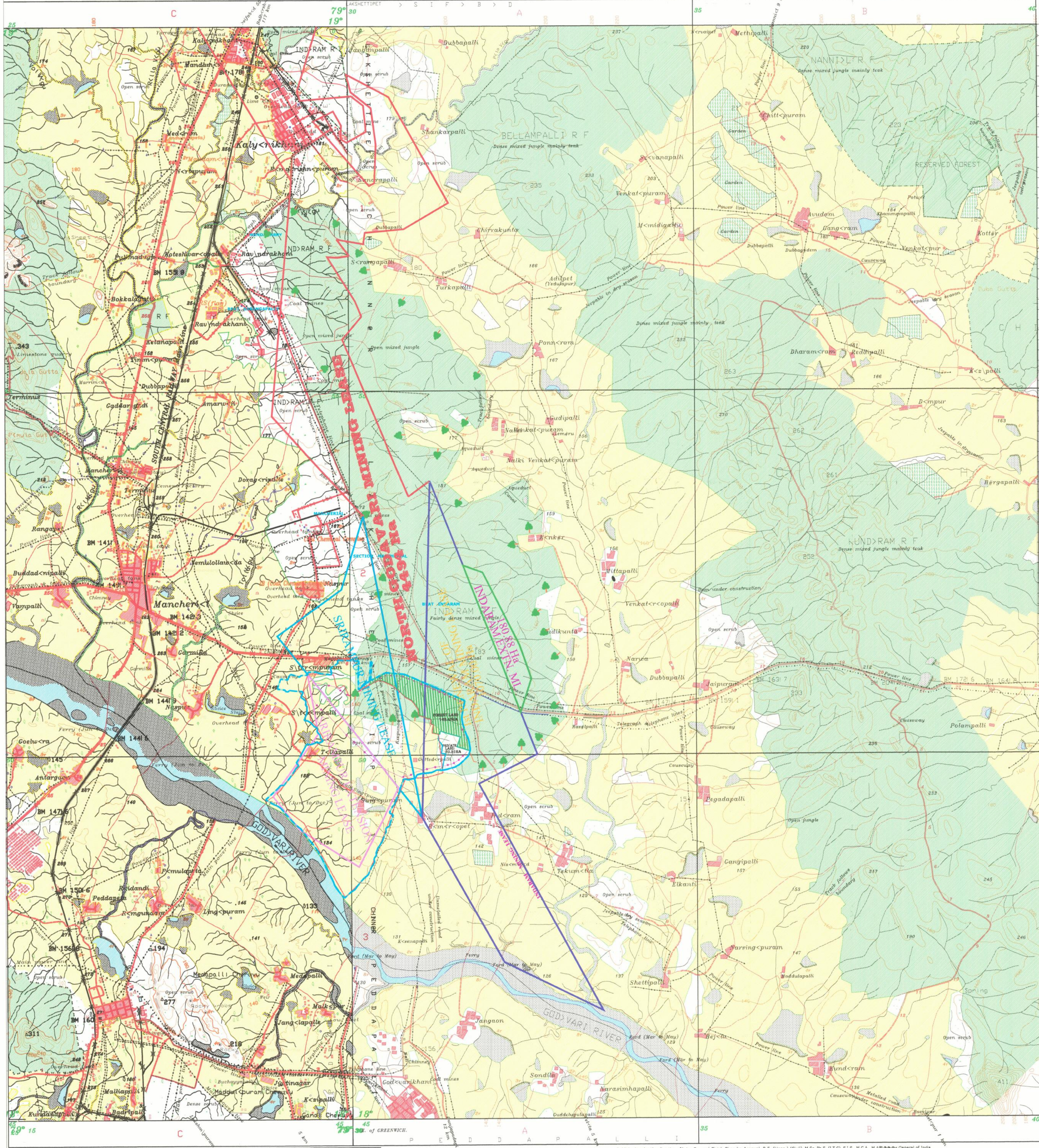
Surveyed 1979-80.

Magnetic Variation from True North about 1 West in 1975.
(Decreasing by about 1' annually.)

No. 56 N
9

COORDINATES OF 162.45 Ha.

ID	Easting	Northing	Latitude	Longitude
1	342013.353	2084808.924	18.84919064	79.50041998
3	342491.532	2085050.472	18.85140945	79.50493829
4	342524.045	2085055.153	18.85145422	79.50524645
5	342542.016	2085054.122	18.85144627	79.50541707
6	342570.181	2085053.046	18.85143869	79.50568442
7	342631.242	2085033.139	18.85126349	79.50626546
8	342699.630	2085007.380	18.85103596	79.50691649
9	342753.020	2084985.027	18.85083807	79.50742492
10	342815.643	2084963.466	18.85064804	79.50802091
11	342854.484	2084941.695	18.85045430	79.50839123
12	342949.782	2084894.253	18.85003291	79.50929935
13	343132.069	2084690.267	18.84820378	79.51104541
14	343235.762	2084605.976	18.84745010	79.51203612
15	343304.911	2084574.423	18.84717026	79.51269481
16	343372.306	2084534.579	18.84681539	79.51333751
17	343446.473	2084449.992	18.84605678	79.51404803
18	343498.523	2084375.087	18.84538397	79.51454790
19	343542.487	2084303.882	18.84474397	79.51497075
BPL1	343518.969	2106559.333	19.04581313	79.51296767
CHN2	343697.705	2084531.681	18.84861470	79.52929135
IMLA	343896.683	2090077.166	18.89693105	79.51783340
IMLB	343596.562	2081563.277	18.83721505	79.51570140
IMLC	345640.131	2077863.082	18.78670966	79.53537987
IMLD	348132.897	2076610.549	18.77557694	79.55912274
IMLE	345045.603	2082396.849	18.82762739	79.52938240
IMLF	346541.930	2083133.126	18.83439106	79.54352455
P2	342315.653	2084948.693	18.85047649	79.50327743
PFB1	344840.932	2083254.439	18.83536026	79.52737469
PFB1AA	344830.088	2083189.667	18.83477424	79.52727690
PFB2	344833.371	2083326.265	18.83600862	79.52729729
PFB3	344812.754	2083459.967	18.83721505	79.52709113
PFB4	344798.229	2083525.599	18.83780694	79.52694813
PFB5	344751.429	2083626.538	18.83871540	79.52649609
PFB6	344657.876	2083906.894	18.84124134	79.52586277
PFB7	344636.507	2084036.788	18.84241330	79.52537325
PFB8	344640.321	2084129.708	18.84325310	79.52540211
PFB9	344702.915	2084408.170	18.84577367	79.52597412
PFB10	344719.987	2084503.515	18.84663638	79.52612860
PFB11	343961.875	2084843.767	18.84965341	79.51890763
PFB12	343696.834	2084962.765	18.85070851	79.51638307
PFB13	343499.037	2085054.697	18.85152413	79.51449875
PFB14	343194.710	2085185.387	18.85268182	79.51160040
PFB15	342711.430	2085229.900	18.85304727	79.50701669
PFB16	342324.550	2085037.836	18.85128256	79.50335472
RP1	345009.605	2082948.867	18.83261210	79.52899923
RP2	344919.365	2082960.567	18.83271104	79.52814205
RP3	344813.096	2083246.196	18.83528369	79.52711121
RP4	344507.088	2083341.294	18.83611991	79.52420007
RP5	344595.029	2083587.595	18.83835180	79.52501510
RP6	344203.427	2083699.432	18.83933278	79.52129038
RP7	344087.137	2083741.880	18.83970753	79.52018356
RP8	344068.866	2083661.962	18.83988411	79.52001650
RP9	343894.367	2083703.445	18.83934574	79.51835741
RP10	343926.239	2083904.076	18.84116081	79.51864394
RP11	343862.378	2083936.391	18.84144794	79.51803541
RP12	343871.308	2084029.585	18.84229061	79.51811275
RP13	343809.606	2084070.155	18.84262549	79.51752404
RP14	343775.351	2084069.057	18.84263998	79.51719908
RP15	343632.242	2084135.632	18.84323066	79.51583581
RP16	343553.906	2084145.940	18.84331786	79.51509165
SRP1	343871.295	2085209.308	18.85294916	79.51801907
SRP2	341065.287	2085096.309	18.85171441	79.49140021



INDEX

- R.F. BOUNDARY
 - 1. R.F. BOUNDARY
- EXISTING MINING LEASES
 - a. SRIRAMPUR MINING LEASE
 - b. SRIRAMPUR EXTN. MINING LEASE
 - c. NORTH GODAVARI MINING LEASE
 - d. INDRAM MINING LEASE
 - e. INDRAM EXPANSION M.L.
- EXISTING SRP OCP-II
- BOUNDARY OF SRP OCP-II EXPANSION PROJECT
- 162.45 Ha FOREST LAND REQUIRED FOR DIVERSION FOR SRP OCP-II(EXPN.)

PRINTED AT THE 104 (HBD) PRINTING GROUP OF SURVEY OF INDIA.

Village or Village inhabited, deserted, Fort
Huts, permanent, temporary, Tower, Antidote
Temple, Chattri, Church, Mosque, Idgah, Tomb, Graves
Lighthouse, Lightship, Buoy, Lighted, unlighted, Anchorage
Head, tail, or trail, cross, Bench, Boundary pillar, unmarked, village boundary
Palis, palisade, other, Platan, Conifer, Bamboo, Other trees
Boundary, International
state, demarcated, undemarcated
district, sub-division, taluk, or local limit
Boundary pillars, surveyed, unmarked, village boundary
Bench-mark, geodetic, tertiary, vertical, approximate
Height, triangulation, station, point, approximate
Bench-mark, geodetic, tertiary, vertical, approximate
Post office, Telegraph office, Combined office, Police station
Railway, electric or telegraph, inspection, Bench, Boundary pillar, unmarked, village boundary
Speed name, administrative, locality or tribe	KIKRI N>GA

REG. No. 8235-101-D/82 (W.C. 58-133,333)-672/84-3446-97.

Roads, metalled, according to importance, distance stone
unmetalled, do, do, bridge
Cart-track, Pack-track and pass, Foot-path with bridge
Bridges, with spans, without, Causeway, Foot or Ferry
Spans, with tracks in bed, untracked, Canal
Dams, masonry or rock-filled, earthwork, Wall
River banks, shelving, steep, 3 to 6 metres, over 6 metres
dry with water channel, with island and rock, Total river
Submerged rocks, Shal, Shamsa, Rafts
Wells, lined, unlined, Tubewell, Spring, Tank, perennial, dry
Embankments, road or rail, tank, Broken ground
Railways, broad gauge, double, single with station, under construction
Power lines, do, do, with distance stone, do
Mines, line of tramway, Telegraph line, Cutting with tunnel
Contours with 100-feet intervals, Rocky slopes, cliffs
Sand features, (1) sand-hills and dunes (surveys) (2) shifting dunes

Index to Sheets

56 N 4	56 N 5	56 N 6	56 N 7
56 N 8	56 N 9	56 N 10	56 N 11

Published under the direction of Major General Girish Chandra Aggarwal, B.E. (Hons.) (Civil), M.Sc. Ph.D. (I.T.C.), P.I.S., M.C.A., Major General of India, 1982.

Scale: 1:50,000

HEIGHTS & CONTOURS IN METRES
CONTOUR INTERVAL 20 METRES

Water features are shown in blue where they generally contain water.

Cultivated areas are coloured yellow.

The exterior boundaries of areas of Reserved or Protected Forests are shown by green ribbons.

The triangulated heights and contours in this sheet have not been adjusted to the heights of the spirit-levelled benchmarks and may not be strictly in accordance with them.

The district boundary between Nallabolu and Karimnagar, in the centre of Godavari River is conventional and not demarcated.

Tanks, shown dry, in this area usually contain water from July to December.

GOVERNMENT OF INDIA COPYRIGHT, 1982.
Price: Fourteen Rupees.

REFER TO THIS MAP AS 1-1' 50,000
SHEET 56 N / 9 SECOND EDITION
INDIA

THIS PART OF TOPO SHEET IS PRINTED FROM THE DIGITAL DATA SUPPLIED BY SURVEY OF INDIA ON CLEARANCE FROM MINISTRY OF DEFENCE VIDE OFFICE MEMORANDUM No. 17(14) 2005/D (GS-II) Dt:09-08-2005.

GENERAL MANAGER (SRIRAMPUR)
THE S.C.Co.Ltd.

PLATE No.2

THE S C Co., Ltd.
(A GOVERNMENT COMPANY)
SRIRAMPUR AREA

PART TOPO PLAN SHOWING THE DIVERSION OF FOREST LAND 162.45Ha REQUIRED FOR SRIRAMPUR OPENCAST No.II EXPANSION PROJECT
R.F. = 1: 50000

M. S. Subramanian
AREA SURVEY OFFICER
SRP AREA

General Manager
SRP AREA
SRIRAMPUR.