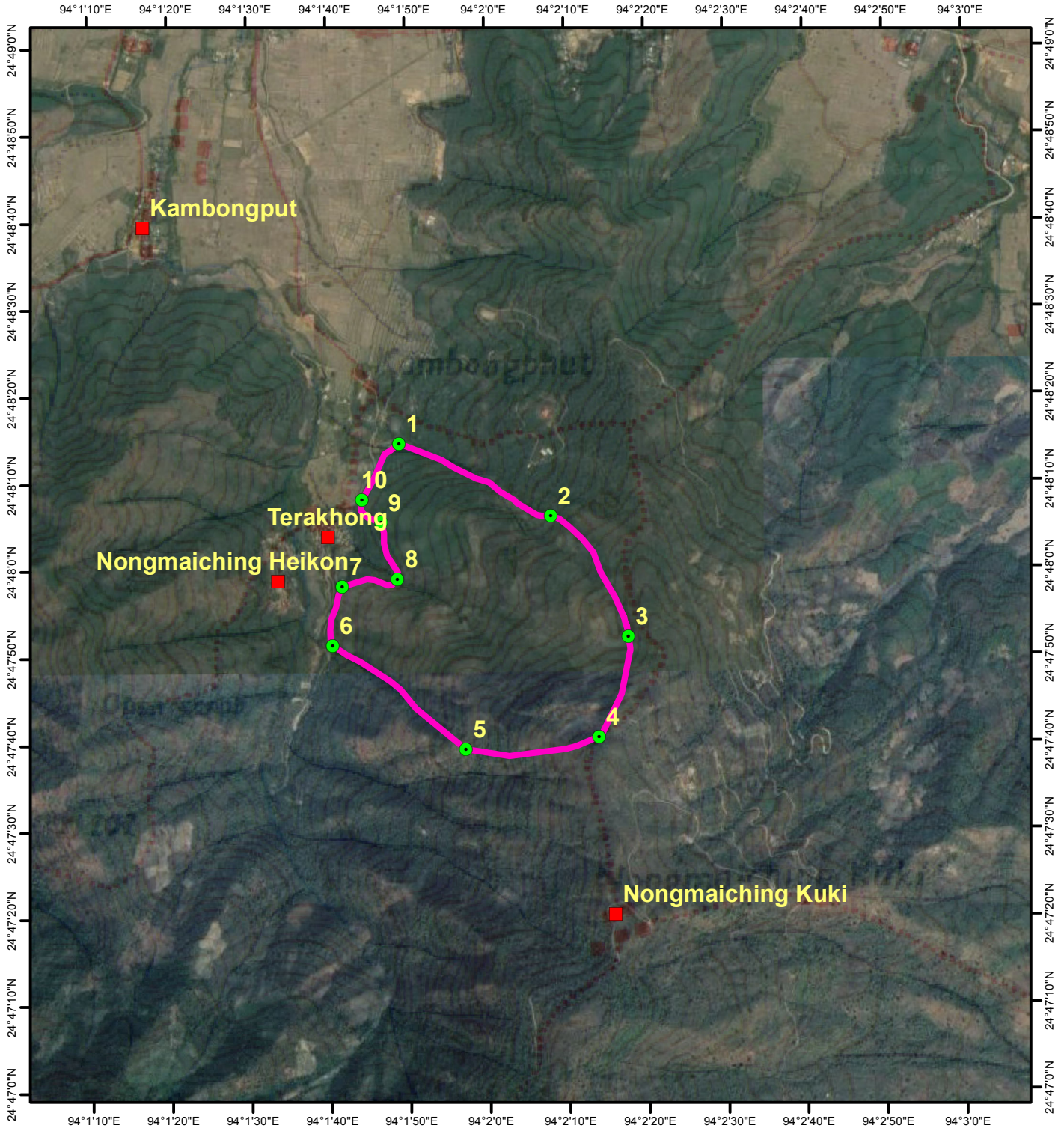


**GEO-REFERENCE MAP SHOWING C.A. PLANTATION SITE AT TERAKHONG, NONGMAICHING RF  
(FOR DIVERSION OF 38.081 Ha. OF FOREST LAND  
FOR ESTABLISHMENT OF MANIPUR UNIVERSITY OF CULTURE  
AT 39-WAKHA VILLAGE)**



1:20,000



\* SOI TOPOSHEET No. 83/L-1

GPS. PT	LATITUDE	LONGITUDE
1	24° 48' 14.507" N	94° 1' 48.840" E
2	24° 48' 6.035" N	94° 2' 7.884" E
3	24° 47' 52.175" N	94° 2' 17.573" E
4	24° 47' 40.695" N	94° 2' 13.783" E
5	24° 47' 39.340" N	94° 1' 56.982" E
6	24° 47' 51.335" N	94° 1' 40.322" E
7	24° 47' 58.106" N	94° 1' 41.594" E
8	24° 47' 58.943" N	94° 1' 48.564" E
9	24° 48' 5.451" N	94° 1' 46.534" E
10	24° 48' 8.059" N	94° 1' 44.150" E

**Legend**

- GPS PT.
- SETTLEMENT
- CA PLANTATION SITE (76.162 HA)

DIVISION:- CENTRAL FOREST DIVISION  
 RANGE:- NONGMAICHING  
 BLOCK- IRIL  
 COMPT:- 9  
 CENTRE:- TERAKHONG  
 AREA:- 76.162 HA