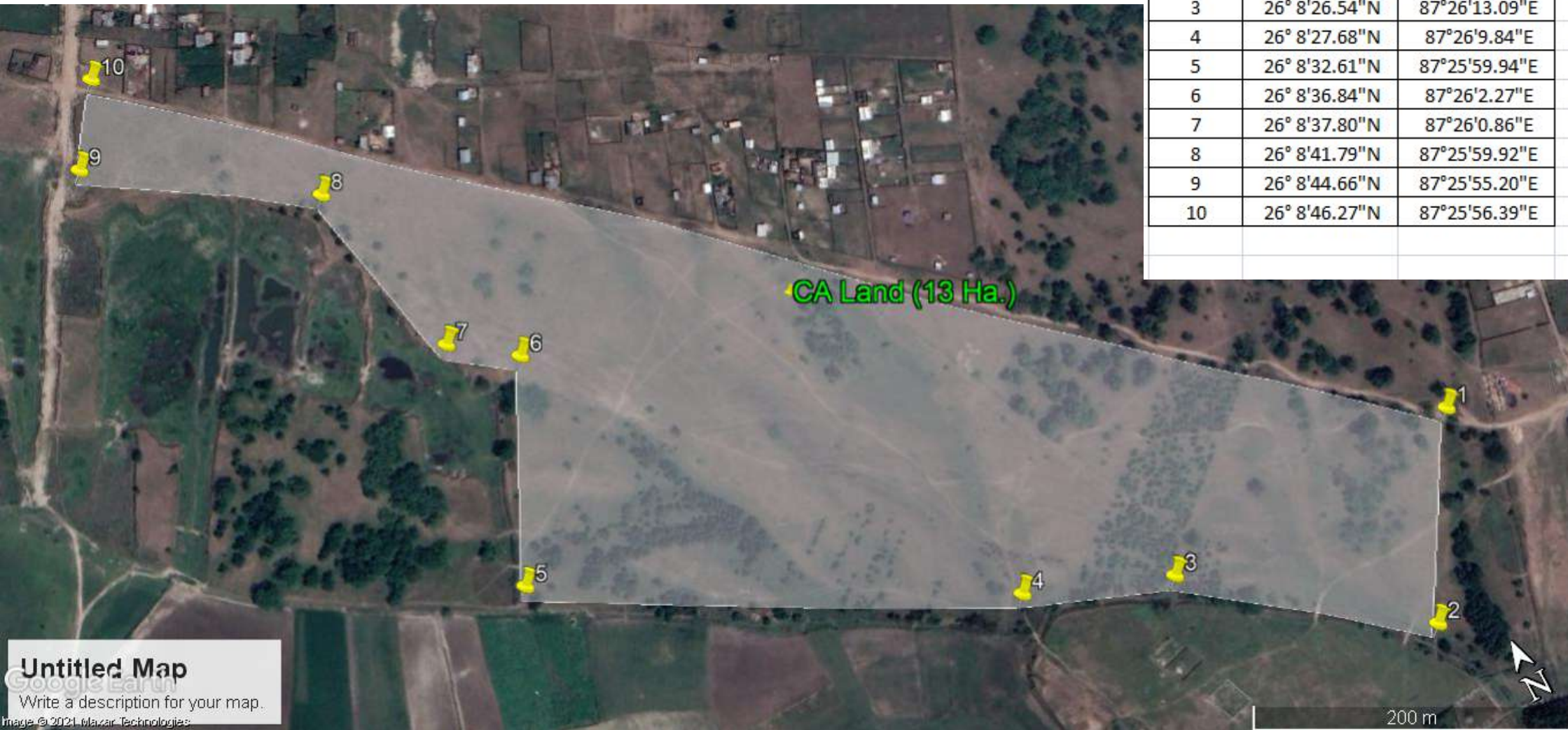


DGPS Map

A Compensatory afforestation land has been identified in Hadia block of Araria Forest division having 13 ha. Forest area for plantation in Araria district.

GPS Coordinates of Identified CA Land (13 ha.)

Sr.No.	Latitude	Longitude
1	26° 8'26.87"N	87°26'20.47"E
2	26° 8'23.17"N	87°26'17.82"E
3	26° 8'26.54"N	87°26'13.09"E
4	26° 8'27.68"N	87°26'9.84"E
5	26° 8'32.61"N	87°25'59.94"E
6	26° 8'36.84"N	87°26'2.27"E
7	26° 8'37.80"N	87°26'0.86"E
8	26° 8'41.79"N	87°25'59.92"E
9	26° 8'44.66"N	87°25'55.20"E
10	26° 8'46.27"N	87°25'56.39"E



[Signature]
20/07/2021
Range Officer of Forest
Araria

[Signature]
D. F. O,
ARARIA