

No. G43G11

Scale 1:50,000

G43G6 (45B/6)	G43G10 (45B/10)	G43G14 (45B/14)
G43G7 (45B/7)	Jodhpur RAJASTHÂN G43G11 (45B/11)	G43G15 (45B/15)
G43G8 (45B/8)	G43G12 (45B/12)	G43G16 (45B/16)
Bärmer RAJASTHÂN		

45B11

भारतीय सर्वेक्षण विभाग

SURVEY OF INDIA

1st Edition 2014.

Price: ₹ 94/-

CONVENTIONAL SYMBOLS

Express highway: with toll; with bridge; with distance stone	
Roads, metalled: according to importance	
Roads, double carriageway: according to importance	
Unmetalled road: Cart-track: Pack-track with pass. Foot-path	
Stream: with track in bed; underflowed. Canal	
Dam: masonry or rock-filled; earthwork. Well	
River: dry with water channel; with island & rocks. Tidal river	
Submerged rocks. Shoal. Swamp. Reeds	
Wells: lined; unlined. Tube-well. Spring. Tank: perennial; dry	
Embankments: road or rail; tank. Broken ground	
Railways: broad gauge: double; single with station; under constr.	
Railways, other gauge: double; single with distance stone; do.	
Mineral line or tramway. Kln. Cutting with tunnel	
Contours with sub-features. Rocky slopes. Cliffs	
Sand features: (1) flat. (2) sand-hill (permanent). (3) dunes (shifting)	
Towns or Villages: inhabited: dispersed. Fort	
Main permanent: temporary. Tower. Antiquities	
Temple. Chhatra. Church. Mosque. Sāgh. Tomb. Green	
Lighthouses. Lightship. Buoy: lighted; unlighted. Anchorage	
Mine. Vine on trails. Grass. Scrub	
Palms; palms; other. Plantain. Conifer. Bamboo. Other trees	
Areas: cultivated; wooded. Surveyed tree	
Boundary, international	
state: demarcated: undemarcated	
district: subdivision, taluk or siluk; forest	
Boundary, pillars: surveyed; unlocated	
Height, triangulated: station point; approximate	
Bench-mark: geodetic; tertiary; canal	
Post office. Overhead tank	
Rest house or inspection bungalow. Circuit house. Police station	
Camping ground. Forest: reserved; protected	
Spaced names: administrative; locality or tribal	
Hospital. Dispensary. Veterinary: Hospital / Dispensary	
Aerodrome. Helipad. Tourist site	
Power line: with pylons surveyed; with poles unsurveyed	

REFERENCE

NH 125 National Highway No. 125.

NOTES:-

Heights are in metres and above Indian mean sea level. Contours are approximate.
A relative height, e.g., 10', represents the approximate height, in metres, between the top and bottom of a steep slope.
A relative height, e.g., 10', against a well, indicates its total depth in metres.
Unmetalled roads and cart-tracks in this sheet are generally motorable (four-wheel drive).
Tanks, shown dry, in this area usually contain water from July to December.
Most of the unlined well symbols indicate covered tanks, called kunds, which usually contain surface collection of rainwater.
Limits of cultivation are variable and dependent on rainfall.
Digi is a tank which is used for collection of water.
Pylons are a place where there is arrangement for serving drinking water.
Hand pump is shown thus.....

COMPILATION INDEX

A. Surveyed 1985-86. Updated for major details during 2006-07.



Projection - UTM Datum - WGS 84

Magnetic Variation from True North about 1/2° East in 2010.
(increasing by about 2' annually).

1:50,000

500 m to 1 cm 2 cm to 1 km
Kilometres

CONTOUR INTERVAL 20 METRES

For further details about this map, please contact
Director
Rajasthan Geo-Spatial Data Centre
Survey of India
Sector 10, VidyaKhamagar
Jaipur.

WEBSITE - www.surveyofindia.gov.in

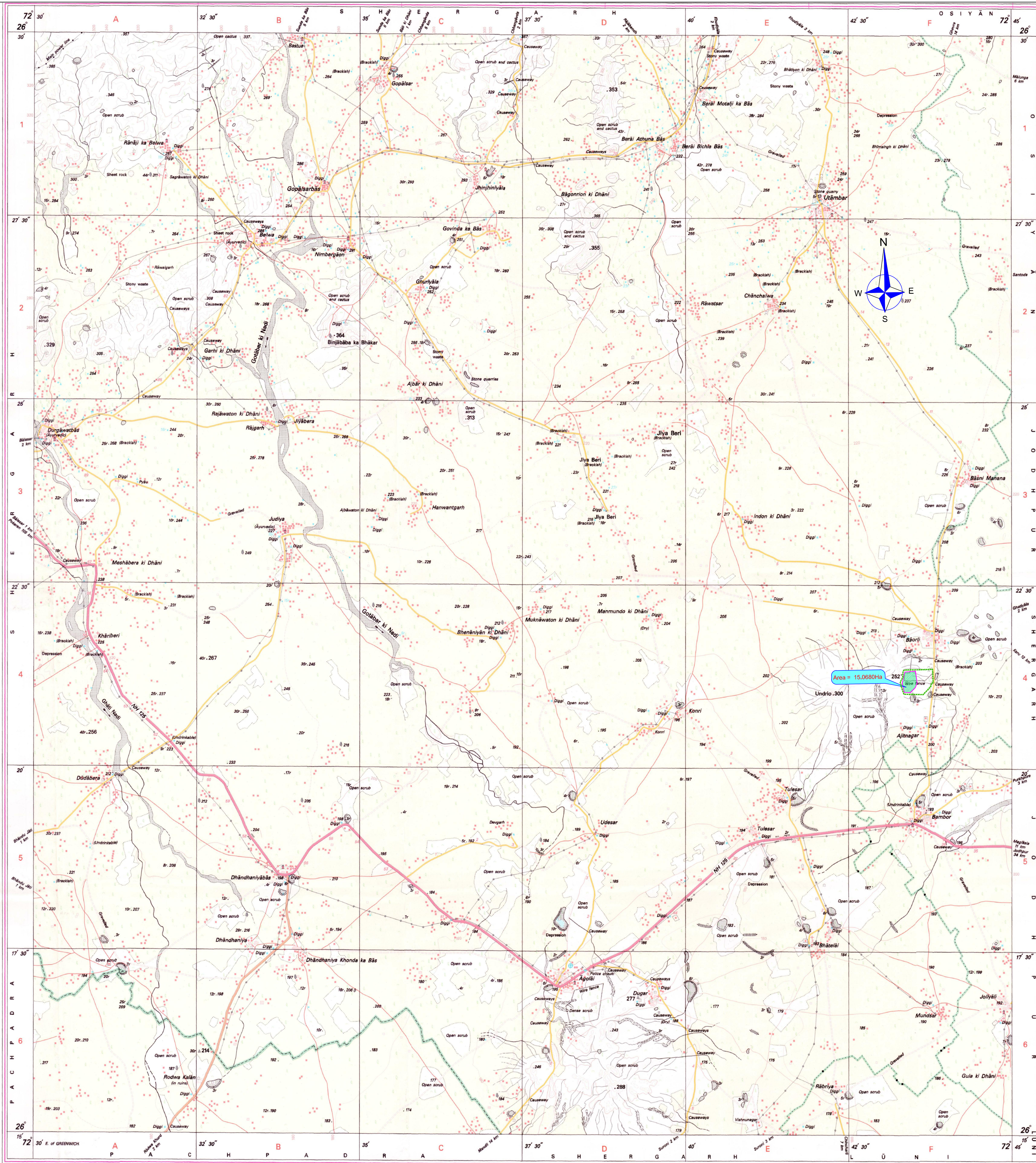
Reproduction in whole or part by any means is prohibited
without the written permission of Survey of India, the
National Mapping Agency.

GOVERNMENT OF INDIA COPYRIGHT, 2014.

LEGEND :

CA Land	
Forest Block	
District Boundary	

1km 500m 0 2km
KILOMETRES
SCALE - 1: 50000



REG. No. - WPD D/14 (Rajasthan) GDC-150/000.

भारत के मानचित्रकार डॉ. सत्येंद्र कुमार राव, के निदेशन में प्रकाशित,
Published under the direction of Dr. Swarna Subba Rao, Surveyor General of India,
Survey of India, Hithibarkala Estate, Post Box No. 37, Dabra Dūn - 248001 (Uttarakhand),
Department of Science & Technology, Government of India.

PRINTED AT THE WESTERN PRINTING GROUP OF SURVEY OF INDIA.

CLIENT:

NATIONAL HIGHWAYS
AUTHORITY OF INDIA

CONSULTANT:

FEEDBACK INFRA
Making Infrastructure +appen

Feedback Infra
Private Limited
15th Floor, Tower 9B
DLF Cyber City Phase-III,
Gurgaon 122 002

Drawn by:

D.J. D.J.

Designed by:

M.K.N. M.K.N.

Checked by:

R.M. R.M.

Approved By:

P.R. P.R.

Scale:

1:50000

Date:

October - 2018

STATUS:

Proposal No. FP/RJ/ROAD/32975/2018

PROJECT:

Preparation of Project Report for Jodhpur Ring Road
in the State of Rajasthan,
Section-I Dongiyawas to Keru.

TITLE:

LAND IDENTIFIED FOR COMPENSATORY
AFFORESTATION SHOWING IN SOI MAP

DRG NO.:

FIPL/HW/R/SOI-01

REV:

R-0

SHEET:

SIZE: 841 x 680mm