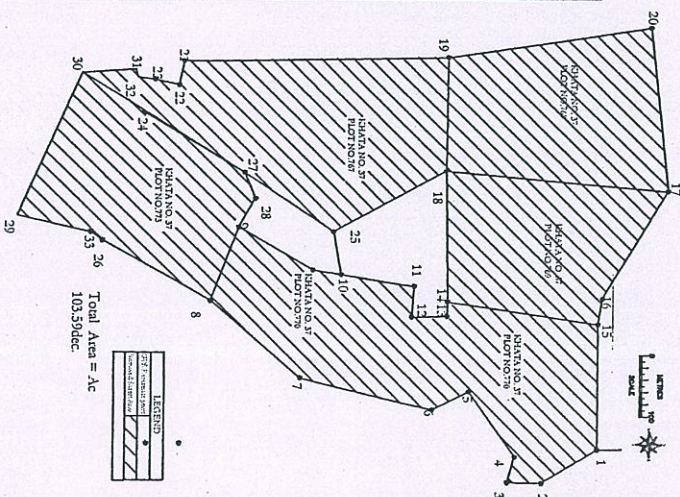


MAP SHOWING GPS SURVEYED COORDINATES OF POINTS OF LAND IN BISHWANATHPUR VILLAGE REQUIRED FOR DIVERSION OF FOREST LAND FOR WIDENING OF EXISTING 2-LANE ROAD TO 4-LANE ROAD FROM BANKBAHAL TO KANIKA RAILWAY SIDING.

PLOT NO.	AREA IN ACRES (AS PER GPS SURVEY)	PERIMETER
767	24.21	1459.36
768	18.70	1127.70
769	16.74	1047.41
770	27.72	1792.03
773	17.42	1112.82
TOTAL		104.79



Revenue Inspector  
Hemgir

Assistant Engineer  
T. Hemgir

Assistant Executive Engineer  
Hemgir  
Sundargarh Division

EXECUTIVE ENGINEER  
SUNDARGARH (R&B) DIVISION  
SUNDARGARH

Divisional Forest Officer  
Sundargarh Division