

LEGEND		
Acquired Forest Area		District Boundary
Proposed Center line		Forest Boundary
Proposed Right of Way		GPS Point

Manager (Tech.)
NHAI PIU-Sawai Madhopur
[Signature]

NOTES:
1. All Dimensions are in Meters Except Kilometer Stones.

CLIENT:
NATIONAL HIGHWAYS AUTHORITY OF INDIA
(Ministry of Road, Transport & Highways)
Government of India
G-5 & 6, Sector-10, New Delhi - 110075

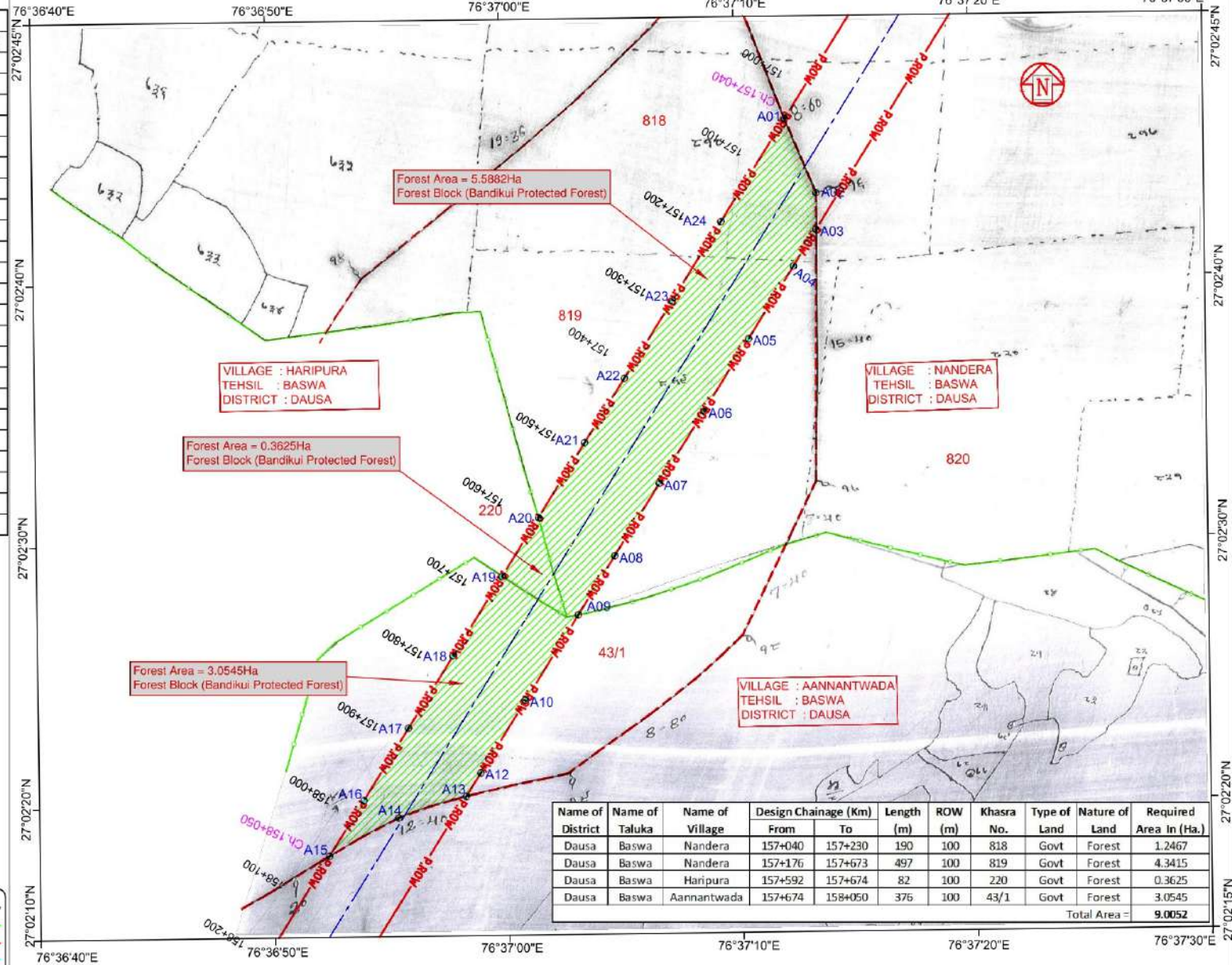
CONSULTANT:
FEEDBACK INFRA
Feedback Infra Private Limited
15th Floor, Tower 9B
DLF Cyber City Phase-III,
Gurgaon 122 002
Making Infrastructure Happen

Drawn by: *[Signature]*
Designed by: *[Signature]*
Checked by: *[Signature]*
Approved By: *[Signature]*
Scale: AS Shown
Date: Oct - 2019

STATUS: FEASIBILITY REPORT
PROJECT: "Diversion of forest land for development of (Greenfield Highway) from Firozpur Jhirka (Ch. 79.394 Km) to Itawa (Ch. 284.000 Km) Section of NH-148N (Total Length 204.606km) under Bharatmala Pariyojana (Lot-4/ Package-4) in Rajasthan State"
TITLE: Georeference Map of Road Bandikui PF (Dausa Division)
DRG NO.: FIPL/HW/LOT-4/GRM-01
REV: R-0
SHEET: F

REV	DATE	DESCRIPTION OF REVISIONS	BY

Point No.	Latitude (N)			Longitude (E)		
	Degree	Minute	Second	Degree	Minute	Second
A01	27	2	46.08	76	37	12.16
A02	27	2	43.22	76	37	13.46
A03	27	2	41.82	76	37	13.44
A04	27	2	40.42	76	37	12.45
A05	27	2	37.68	76	37	10.51
A06	27	2	34.93	76	37	8.56
A07	27	2	32.19	76	37	6.62
A08	27	2	29.45	76	37	4.68
A09	27	2	27.21	76	37	3.09
A10	27	2	23.96	76	37	0.79
A12	27	2	21.21	76	36	58.85
A13	27	2	20.32	76	36	58.22
A14	27	2	19.53	76	36	55.32
A15	27	2	18.09	76	36	52.34
A16	27	2	20.21	76	36	53.84
A17	27	2	22.95	76	36	55.78
A18	27	2	25.70	76	36	57.73
A19	27	2	28.70	76	36	59.86
A20	27	2	30.94	76	37	1.44
A21	27	2	33.78	76	37	3.45
A22	27	2	36.22	76	37	5.18
A23	27	2	39.17	76	37	7.27
A24	27	2	42.16	76	37	9.39



Name of District	Name of Taluka	Name of Village	Design Chainage (Km) From	Design Chainage (Km) To	Length (m)	ROW (m)	Khasra No.	Type of Land	Nature of Land	Required Area in (Ha.)
Dausa	Baswa	Nandera	157+040	157+230	190	100	818	Govt	Forest	1.2467
Dausa	Baswa	Nandera	157+176	157+673	497	100	819	Govt	Forest	4.3415
Dausa	Baswa	Haripura	157+592	157+674	82	100	220	Govt	Forest	0.3625
Dausa	Baswa	Aannantwada	157+674	158+050	376	100	43/1	Govt	Forest	3.0545
Total Area =										9.0052

LEGEND	
Acquired Forest Area	District Boundary
Proposed Center line	Village Boundary
Proposed Right of Way	Forest Boundary
	Khasra Line
	GPS Point

NOTES:
1. All Dimensions are in Meters Except Kilometer Stones.

CLIENT:
NATIONAL HIGHWAYS AUTHORITY OF INDIA
(Ministry of Road, Transport & Highways)
Government of India
G - 5 & 6, Sector - 10, New Delhi - 110075

CONSULTANT:
FEEDBACK INFRA
Making Infrastructure Happen

Drawn by: **D.J. Dwyer**
Designed by: **K.P. [Signature]**
Checked by: **R.M. [Signature]**
Approved By: **P.R. [Signature]**

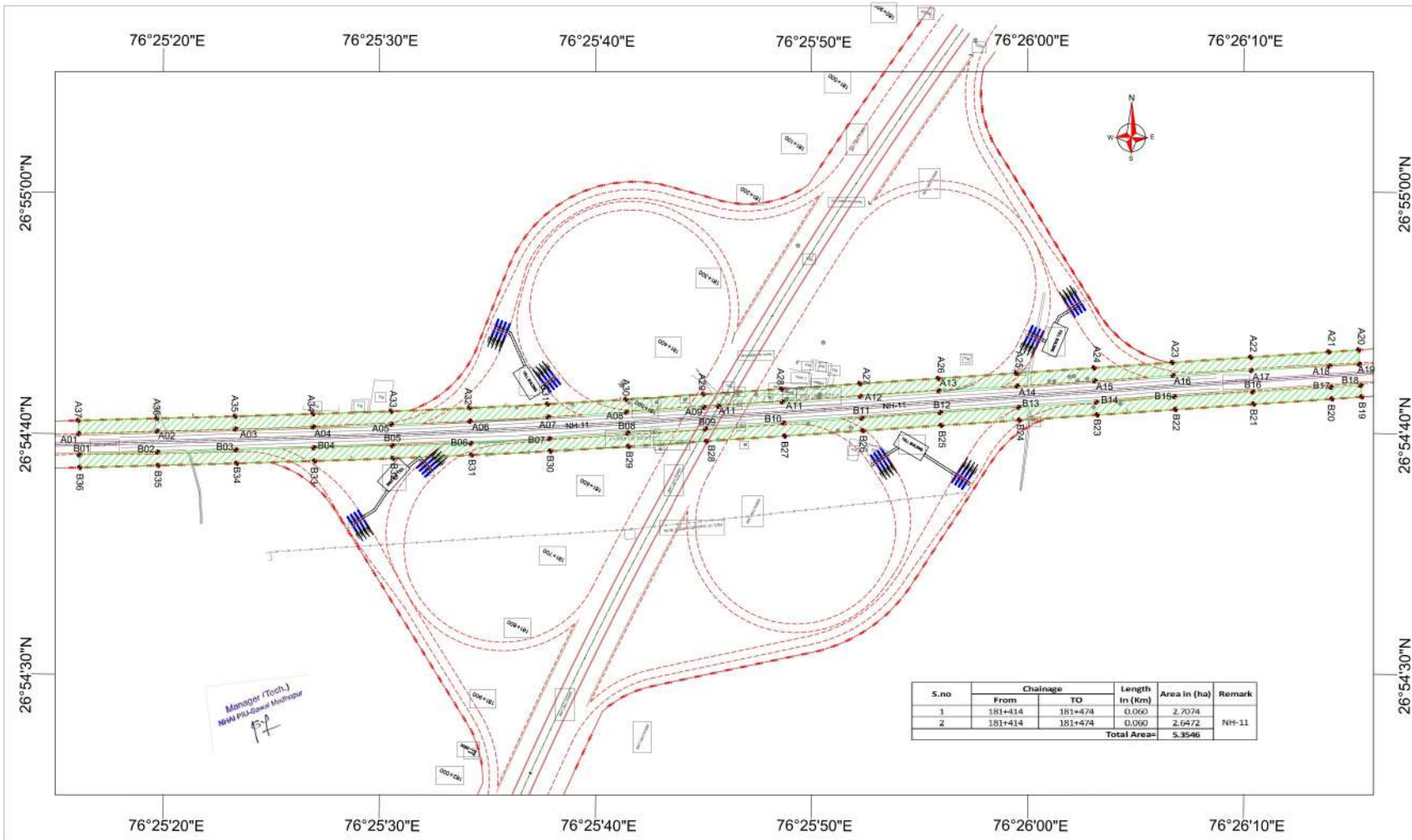
STATUS: **FEASIBILITY REPORT**
PROJECT: **"Diversion of forest land for development of (Greenfield Highway) from Firozpur Jhirka (Ch. 79.394 Km) to Itawa (Ch. 284.900 Km) Section of NH-148N (Total Length 204.606km) under Bharatmala Pariyojana (Lot-4/ Package-4) in Rajasthan State"**
TITLE: **Georeference Map of Road Bandikui Procted Forest (Dausa District)**

REV	DATE	DESCRIPTION OF REVISIONS	BY

The information contained herein is Confidential & Property of Feedback Infra Private Limited and not for Publication. The Information is based on the Understanding that no part thereof shall be Copied or Communicated to a Third Party without Authorisation in Writing from Feedback Infra Private Limited

Scale: **1:5000**
Date: **Oct - 2019**

DRG NO: **FIPL/HW/LOT-4/GRM-01**
REV: **R-01**
SHEET: **01 of 01**



Point No.	Latitude (N)	Longitude (E)	Area in (Hectare)				
Degree	Minute	Second	Degree	Minute	Second		
A00	26	54	45.00	76	25	16.09	2.7074
A01	26	54	45.30	76	25	19.71	
A02	26	54	45.39	76	25	23.33	
A03	26	54	45.28	76	25	26.95	
A04	26	54	45.18	76	25	30.57	
A05	26	54	45.52	76	25	34.19	
A06	26	54	45.69	76	25	37.81	
A07	26	54	45.89	76	25	41.42	
A08	26	54	46.08	76	25	45.04	
A09	26	54	46.32	76	25	48.65	
A10	26	54	46.33	76	25	52.27	
A11	26	54	46.38	76	25	55.89	
A12	26	54	46.07	76	25	59.50	
A13	26	54	47.18	76	26	3.12	
A14	26	54	47.41	76	26	6.74	
A15	26	54	47.65	76	26	10.35	
A16	26	54	47.88	76	26	13.97	
A17	26	54	48.17	76	26	17.59	
A18	26	54	48.38	76	26	21.21	
A19	26	54	48.15	76	26	24.83	
A20	26	54	47.94	76	26	28.45	
A21	26	54	47.72	76	26	32.07	
A22	26	54	47.50	76	26	35.69	
A23	26	54	47.29	76	26	39.31	
A24	26	54	47.07	76	26	42.93	
A25	26	54	46.85	76	26	46.55	
A26	26	54	46.63	76	26	50.17	
A27	26	54	46.41	76	26	53.79	
A28	26	54	46.22	76	26	57.41	
A29	26	54	46.06	76	26	61.03	
A30	26	54	45.93	76	26	64.65	
A31	26	54	45.82	76	26	68.27	
A32	26	54	45.72	76	26	71.89	
A33	26	54	45.63	76	26	75.51	
A34	26	54	45.55	76	26	79.13	
A35	26	54	45.48	76	26	82.75	
A36	26	54	45.42	76	26	86.37	
A37	26	54	45.36	76	26	89.99	

Point No.	Latitude (N)	Longitude (E)	Area in (Hectare)				
Degree	Minute	Second	Degree	Minute	Second		
B01	26	54	44.32	76	25	16.11	2.6472
B02	26	54	44.33	76	25	19.74	
B03	26	54	44.43	76	25	23.36	
B04	26	54	44.41	76	25	26.99	
B05	26	54	44.30	76	25	30.61	
B06	26	54	44.39	76	25	34.23	
B07	26	54	44.78	76	25	37.85	
B08	26	54	45.00	76	25	41.47	
B09	26	54	45.19	76	25	45.10	
B10	26	54	45.44	76	25	48.72	
B11	26	54	45.64	76	25	52.34	
B12	26	54	45.87	76	25	55.96	
B13	26	54	46.09	76	25	59.57	
B14	26	54	46.30	76	26	3.19	
B15	26	54	46.53	76	26	6.80	
B16	26	54	46.71	76	26	10.42	
B17	26	54	46.92	76	26	14.04	
B18	26	54	47.09	76	26	17.66	
B19	26	54	47.32	76	26	21.27	
B20	26	54	47.44	76	26	24.89	
B21	26	54	47.56	76	26	28.51	
B22	26	54	47.60	76	26	32.13	
B23	26	54	47.68	76	26	35.75	
B24	26	54	47.76	76	26	39.37	
B25	26	54	47.84	76	26	42.99	
B26	26	54	47.92	76	26	46.61	
B27	26	54	48.00	76	26	50.23	
B28	26	54	48.08	76	26	53.85	
B29	26	54	48.16	76	26	57.47	
B30	26	54	48.24	76	26	61.09	
B31	26	54	48.32	76	26	64.71	
B32	26	54	48.40	76	26	68.33	
B33	26	54	48.48	76	26	71.95	
B34	26	54	48.56	76	26	75.57	
B35	26	54	48.64	76	26	79.19	
B36	26	54	48.72	76	26	82.81	

S.no	Chainage		Length In (Km)	Area in (ha)	Remark
	From	TO			
1	181+414	181+474	0.060	2.7074	
2	181+414	181+474	0.060	2.6472	NH-11
Total Area:				5.3546	

Manoj (Tech.)
NH-148N-11
17/4

REV	DATE	DESCRIPTION OF REVISIONS	BY

CLIENT: **NATIONAL HIGHWAYS AUTHORITY OF INDIA**
(Ministry of Road, Transport & Highways)
Government of India
G - 5 & 6, Sector - 10, Dwarka, New Delhi - 110075

CONSULTANT: **FEEDBACK INFRA** Private Limited
15th Floor, Tower 1B
DLF Cyber City Phase-III,
Gurgaon 122 002

The information contained herein is Confidential & Property of Feedback Infra Private Limited and not for Publication. The Information is Issued on the Understanding that no part thereof shall be Copied or Communicated to a Third Party without Authorization in Writing from Feedback Infra Private Limited

Drawn by:	DJ	STATUS:	FEASIBILITY REPORT
Designed by:	KP	PROJECT:	"Diversion of forest land for development of (Greenfield Highway) from Firuzpur Jhirka (Ch. 79.394 Km) to Itawa (Ch. 284.000 Km) Section of NH-148N (Total Length 204.606km) under Bharatmala Pariyojana (Lot-4/ Package-4) in Rajasthan State"
Checked by:	RM	TITLE:	Georeference Map of Road Padi Protected Forest on NH -11
Approved By:	PR	DRG NO.:	FIPL/HW/LOT-4-GRM-01
Scale:	1:5000	REV:	0
Date:	April-2019	SHEET:	01 of 01