



No. F43G4  
Scale 1:50,000

F42L15 (41N/15)	F43G3 (46B/3)	F43G7 (46B/7)
F42L16 (41N/16)	F43G4 (46B/4)	F43G8 (46B/8)
F42R13 (41O/13)	F43M1 (46C/1)	F43M5 (46C/5)

1 Bharuch, GUJARAT.

भारतीय सर्वेक्षण विभाग

SURVEY OF INDIA

1st Edition 2011.

Price : Rs. 77/-

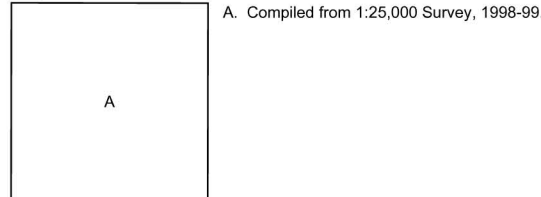
CONVENTIONAL SYMBOLS

- Express highway: with toll; with bridge; with distance stone
- Roads, metalled: according to importance
- Roads, double carriageway: according to importance
- Unmetalled road, Cart-track, Pack-track with pass, Foot-path
- Streams: with track in bed, underlined, Canal
- Dams: masonry or rock-filled, earthenwork, Weir
- River: dry with water channel; with island & rocks, Tidal river
- Submerged rocks, Shoal, Swamp, Reeds
- Wells: trust, untrust, Tubewell, Spring, Tank: perennial, dry
- Embankments: road or rail, tank, Broken ground
- Railways, broad gauge: double, single with station; under construction
- Railways, other gauges: double, single with distance stone, do.
- Mineral line or tramway, Kib, Cutting with tunnel
- Contours with sub-features, Rocky slopes, Cliffs
- Sand features (1st, 2nd, 3rd, 4th, 5th, 6th, 7th, 8th, 9th, 10th)
- Towns or Villages: inhabited, deserted, Fort
- Huts: permanent, temporary, Tower, Antiquities
- Temple, Chhatra, Church, Mosque, Igah, Tomb, Graves
- Lighthouse, Lightship, Buys: lighted, unlighted, Anchorage
- Mine, Vine on trellis, Grass, Scrub
- Palm, papyrus, other, Plantain, Conifer, Bamboo, Other trees
- Areas: cultivated, wooded, Surveyed tree
- Boundary, international
- district, subdivision, taluk or taluk, forest
- Boundary pillars: surveyed, unlocated
- Heights, triangulated station, point, approximate
- Benchmark: geodetic, tertiary, canal
- Post office, Overhead tank
- Rest house or inspection bungalow, Circuit house, Police station
- Camping ground, Forest: reserved, protected
- Spaced names: administrative, locality or tribal
- Hospital, Dispensary, Veterinary, Hospital/Dispensary
- Aerodrome, Helipad, Tourist site
- Power line: with pylons surveyed; with poles unsurveyed

NOTES :-

Heights and Contours have not been shown.  
A relative height, e.g., 4, represents the approximate height, in metres, between the top and bottom of a steep slope.  
Tanks, shown dry in this area usually contain water from July to December.  
Cultivation is periodic and dependent on rainfall.  
The edge has not been adjusted with Sheet no. 41N/16, due to different year of survey.  
The edge has not been adjusted with Sheet no. 46B/8, due to different year and scale of survey.

COMPILED INDEX



Projection - UTM Datum - WGS 84

Magnetic Variation from True North about 1° West in 2005.  
(Decreasing by about 1' annually)

1:50,000

500 m to 1 km  
Metres 1000 500 0 1 2 3 Kilometres

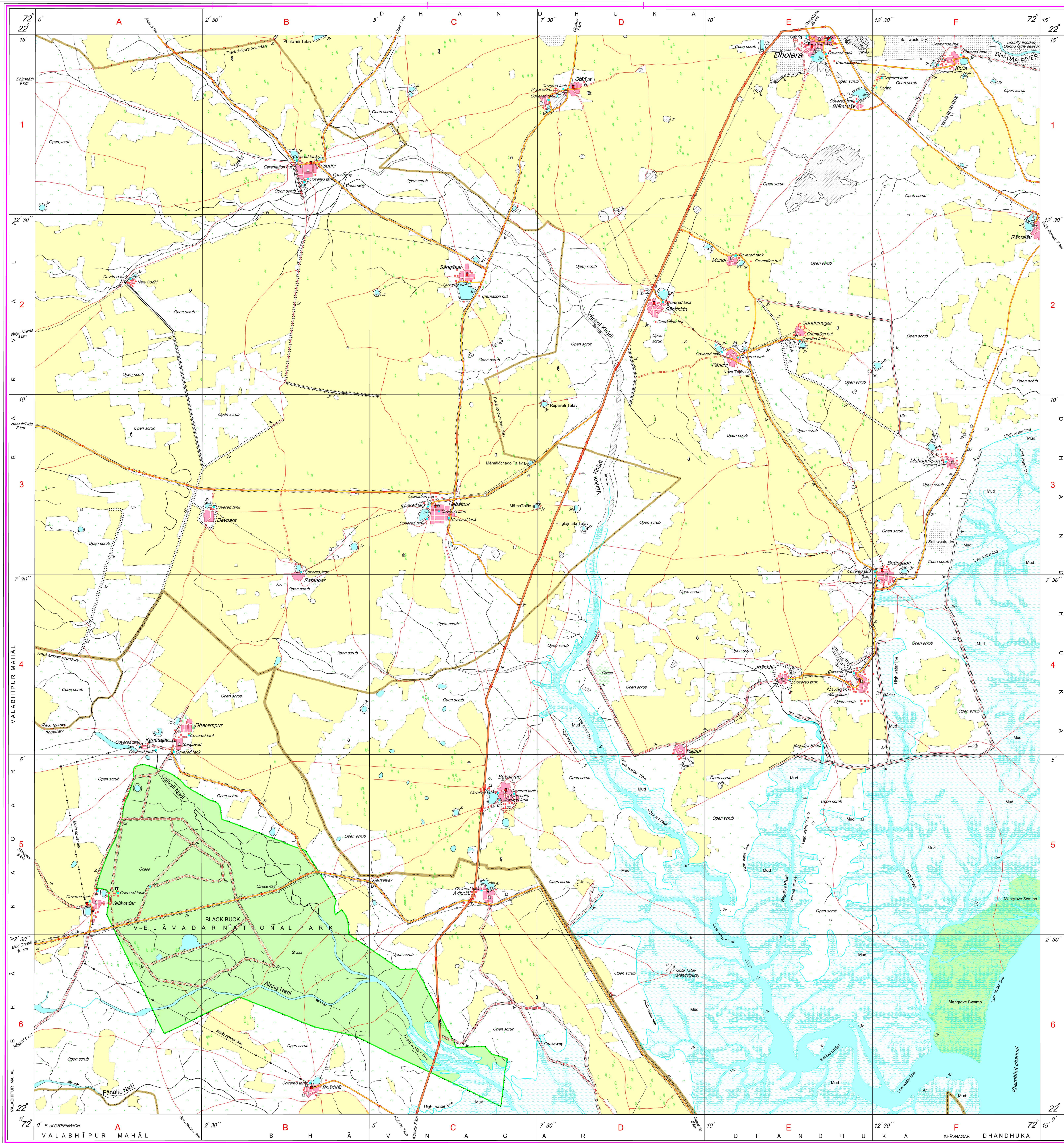
For further details about this map, please contact

Director  
Gujarat, Daman & Diu Geo-Spatial Data Centre  
Survey of India, Sector-10(A)  
Gandhinagar.

WEBSITE - www.surveyofindia.gov.in

Reproduction in whole or part by any means is prohibited  
without the written permission of Survey of India, the  
National Mapping Agency.

GOVERNMENT OF INDIA COPYRIGHT, 2011.



REG. No. - SPG D11 (G&D GDC-1:50,000)

भारत के सर्वेक्षक, स्वर्ण सुभा राव, बी.ई. के निदेश में प्रकाशित,  
Published under the direction of Swarna Subba Rao, B.E., Surveyor General of India,  
Survey of India, Hattibarkala Estate, Post Box No 37, Dehra Dun-248001 (Uttarakhand)  
Department of Science & Technology, Government of India.

PRINTED AT THE SOUTHERN PRINTING GROUP OF SURVEY OF INDIA.