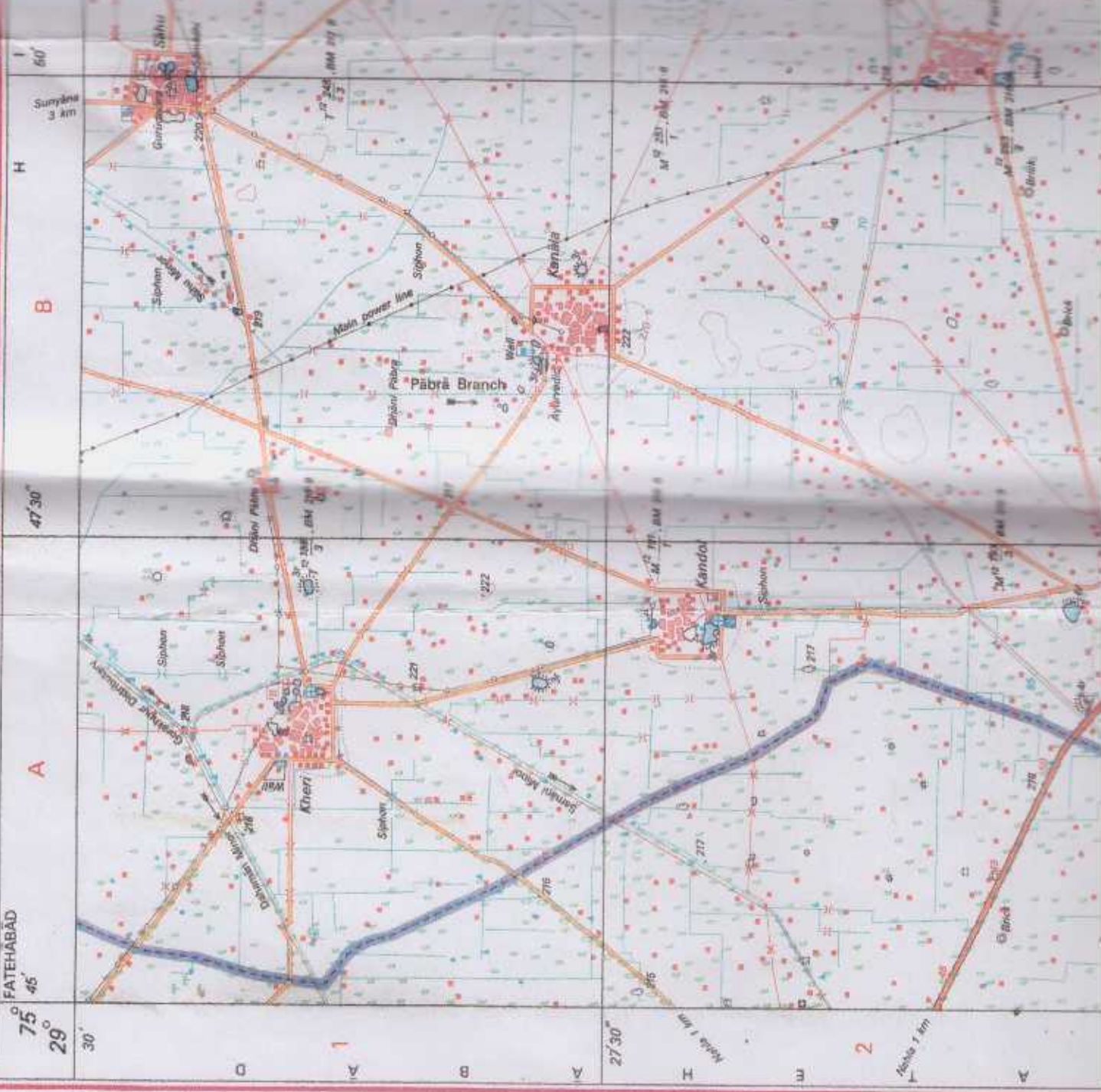


ROUTE OF 400 KV DOUBLE CIRCUIT RIKORI :-

29

(HISDR) — KHATKAR (JIND)



NOT FOR EXPORT

OPEN SERIES
MAP

No. H43P15

Scale 1:50,000

H43P10 Fatehabad HARYANA	H43P14	H43Q2 Jind HARYANA
H43P11	H43P15 Hisar HARYANA	H43Q3
H43P12	H43P16	H43Q4

- 1 Patiala, PUNJAB.
- 2 Kaithal, HARYANA.
- 3 Bhiwani, HARYANA.
- 4 Rohtak, HARYANA.
- 5 Hanumangarh, RAJASTHAN.

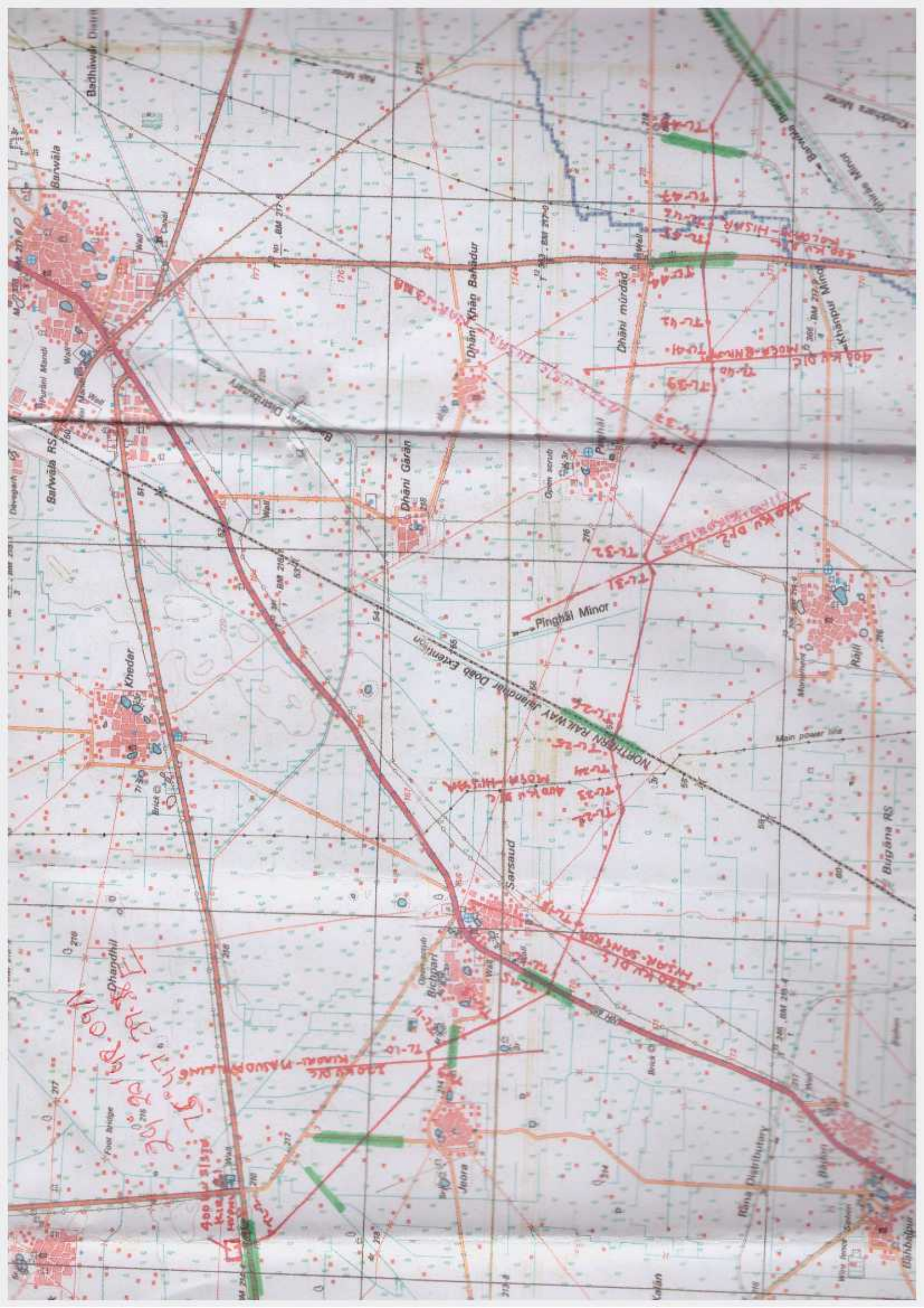


SURVEY OF INDIA

भारतीय सर्वेक्षण विभाग

Price : Rs 9/4

1st Edition 2007.



Barwāla

Barwāla RS

Kheḍar

Dhāni Gārān

Dhāni Khān Bahādūr

Dhāni mūrād

Pinghāl Minor

Sarsaud

Bānā

Barwāla Dam

Barwāla

Kheḍar

Dhāni Gārān

Dhāni Khān Bahādūr

Dhāni mūrād

Pinghāl Minor

Sarsaud

Bānā

Barwāla Dam

Khatola Dam

Barwāla

Kheḍar

Dhāni Gārān

Dhāni Khān Bahādūr

Dhāni mūrād

Pinghāl Minor

Sarsaud

Bānā

Barwāla Dam

Khatola Dam

Barwāla

Kheḍar

Dhāni Gārān

Dhāni Khān Bahādūr

Dhāni mūrād

Pinghāl Minor

Sarsaud

Bānā

Barwāla Dam

Khatola Dam

Barwāla

Kheḍar

Dhāni Gārān

Dhāni Khān Bahādūr

Dhāni mūrād

Pinghāl Minor

Sarsaud

Bānā

Barwāla Dam

Khatola Dam

Barwāla

Kheḍar

Dhāni Gārān

Dhāni Khān Bahādūr

Dhāni mūrād

Pinghāl Minor

Sarsaud

Bānā

Barwāla Dam

Khatola Dam

Barwāla

Kheḍar

Dhāni Gārān

Dhāni Khān Bahādūr

Dhāni mūrād

Pinghāl Minor

Sarsaud

Bānā

Barwāla Dam

Khatola Dam

Barwāla

Kheḍar

Dhāni Gārān

Dhāni Khān Bahādūr

Dhāni mūrād

Pinghāl Minor

Sarsaud

Bānā

Barwāla Dam

Khatola Dam

Barwāla

Kheḍar

Dhāni Gārān

Dhāni Khān Bahādūr

Dhāni mūrād

Pinghāl Minor

Sarsaud

Bānā

Barwāla Dam

Khatola Dam

Barwāla

Kheḍar

Dhāni Gārān

Dhāni Khān Bahādūr

Dhāni mūrād

Pinghāl Minor

Sarsaud

Bānā

Barwāla Dam

Khatola Dam

400 KV D/C

330 KV D/C

220 KV D/C

110 KV D/C

7L-31

7L-32

7L-33

7L-34

7L-35

400 KV D/C

330 KV D/C

220 KV D/C

110 KV D/C

7L-36

7L-37

7L-38

7L-39

7L-40

400 KV D/C

330 KV D/C

220 KV D/C

110 KV D/C

7L-41

7L-42

7L-43

7L-44

7L-45

400 KV D/C

330 KV D/C

220 KV D/C

110 KV D/C

7L-46

7L-47

7L-48

7L-49

7L-50

400 KV D/C

330 KV D/C

220 KV D/C

110 KV D/C

7L-51

7L-52

7L-53

7L-54

7L-55

400 KV D/C

330 KV D/C

220 KV D/C

110 KV D/C

7L-56

7L-57

7L-58

7L-59

7L-60

400 KV D/C

330 KV D/C

220 KV D/C

110 KV D/C

7L-61

7L-62

7L-63

7L-64

7L-65

400 KV D/C

330 KV D/C

220 KV D/C

110 KV D/C

7L-66

7L-67

7L-68

7L-69

7L-70

400 KV D/C

330 KV D/C

220 KV D/C

110 KV D/C

7L-71

7L-72

7L-73

7L-74

7L-75

400 KV D/C

330 KV D/C

220 KV D/C

110 KV D/C

7L-76

7L-77

7L-78

7L-79

7L-80

400 KV D/C

330 KV D/C

220 KV D/C

110 KV D/C

7L-81

7L-82

7L-83

7L-84

7L-85

400 KV D/C

330 KV D/C

220 KV D/C

110 KV D/C

7L-86

7L-87

7L-88

7L-89

7L-90

400 KV D/C

330 KV D/C

220 KV D/C

110 KV D/C

7L-91

7L-92

7L-93

7L-94

7L-95

400 KV D/C

330 KV D/C

220 KV D/C

110 KV D/C

7L-96

7L-97

7L-98

7L-99

7L-100

400 KV D/C

330 KV D/C

220 KV D/C

110 KV D/C

7L-101

7L-102

7L-103

7L-104

7L-105

400 KV D/C

330 KV D/C

220 KV D/C

110 KV D/C

7L-106

7L-107

7L-108

7L-109

7L-110

400 KV D/C

330 KV D/C

220 KV D/C

110 KV D/C

7L-111

7L-112

7L-113

7L-114

7L-115

400 KV D/C

330 KV D/C

220 KV D/C

110 KV D/C

7L-116

7L-117

7L-118

7L-119

7L-120

400 KV D/C

330 KV D/C

220 KV D/C

110 KV D/C

7L-121

7L-122

7L-123

7L-124

7L-125

400 KV D/C

330 KV D/C

220 KV D/C

110 KV D/C

7L-126

7L-127

7L-128

7L-129

7L-130

400 KV D/C

330 KV D/C

220 KV D/C

110 KV D/C

7L-131

7L-132

7L-133

7L-134

7L-135

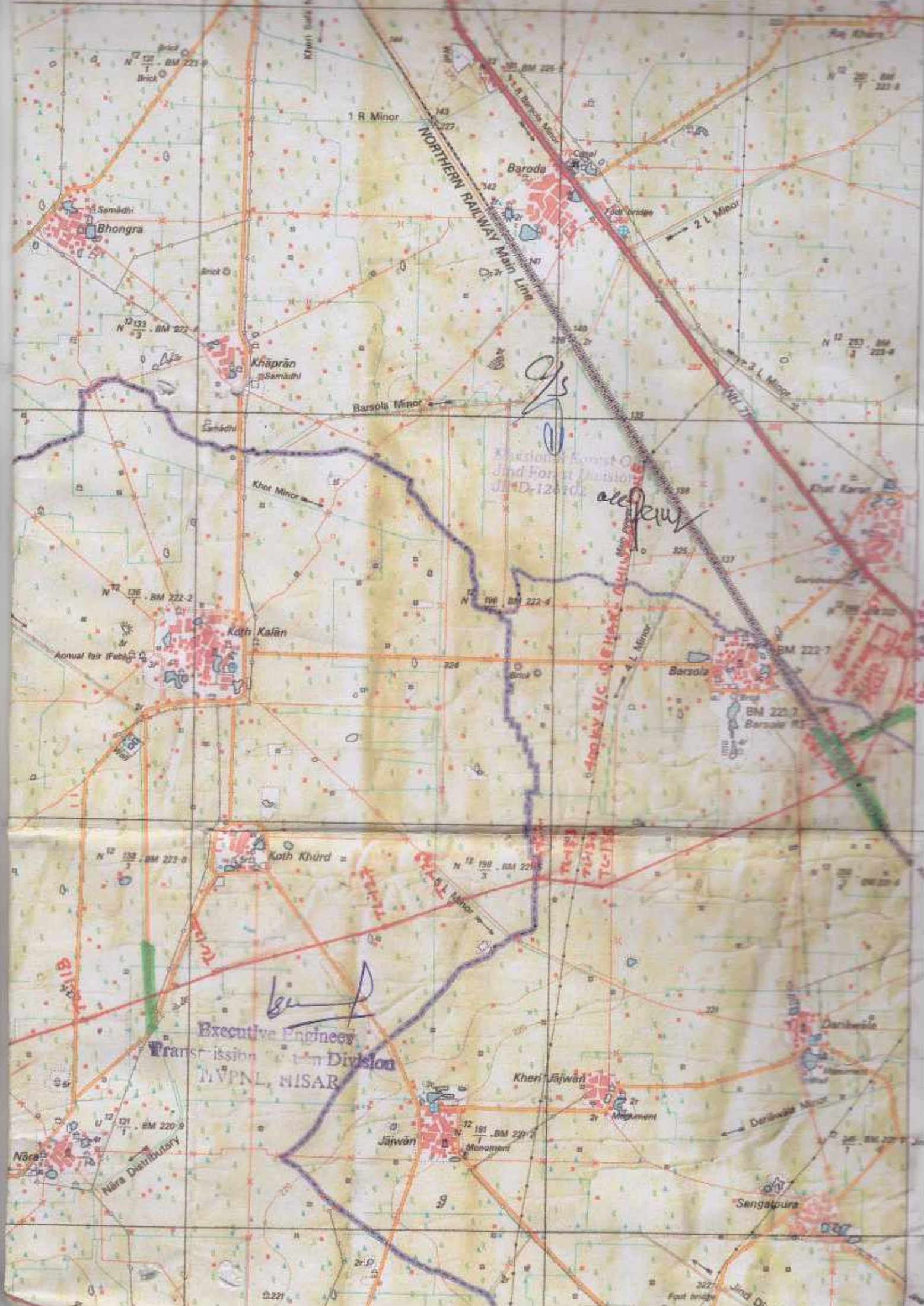
400 KV D/C

330 KV D/C

220 KV D/C

110 KV D/C

7L-136



Expansion Const. of
3rd Forest Division
J.D. 12-101

Handwritten signature

400 kv. S.C. D.C. Lines
TG-135

Handwritten signature
Executive Engineer
Trans. Division
NVPNL, NISAR

Nara Distributary

NORTHERN RAILWAY Main Line

1 R Minor

2 L Minor

3 L Minor

Barsola Minor

Koth Minor

4 L Minor

Chat Karan

Barsola

Barsola

Koth Khurd

Koth Khurd

Kheri Jaiwan

Jaiwan

Dariuswa Minor

Sengarpura

Jod Dier

Bhongra

Baroda

Khaprān

Koth Kalān

Nāra

Raj Khara

BM 221-8

BM 222-8

BM 223-8

BM 224-8

BM 225-8

BM 226-8

BM 227-8

BM 228-8

BM 221-9

BM 222-9

BM 223-9

BM 224-9

BM 225-9

BM 226-9

BM 227-9

BM 228-9

BM 229-9

BM 230-9

BM 231-9

BM 232-9

BM 233-9

BM 234-9

BM 235-9

BM 236-9

BM 237-9

BM 238-9

BM 239-9

BM 240-9

BM 241-9

BM 242-9

BM 243-9

BM 244-9

BM 245-9

BM 246-9

BM 247-9

BM 248-9

BM 249-9

BM 250-9

BM 251-9

BM 252-9

BM 253-9

BM 254-9

BM 255-9

BM 256-9

BM 257-9

BM 258-9

BM 259-9

BM 260-9

BM 261-9

BM 262-9