



विपणन के लिए नहीं NOT FOR EXPORT

OPEN SERIES  
MAP

No. F44U9

Scale 1:50,000

F44O8 (64C/8) Gondia MAHARASHTRA	F44O12 (64C/12) Raj. Hingnagar CHHATTISGARH	F44O16 (64C/16) Durg CHHATTISGARH
F44U5 (64D/5)	F44U9 (64D/9)	F44U13 (64D/13)
F44U6 (64D/6)	F44U10 (64D/10)	F44U14 (64D/14)

भारतीय सर्वेक्षण विभाग

SURVEY OF INDIA

1st Edition 2012

Price: Rs. 77/-

CONVENTIONAL SYMBOLS

Express highway with toll with bridge with distance stone	74	75
Roads, metalled: according to importance	76	77
Roads, double carriageway: according to importance	78	79
Unmetalled road, cart track, pack-track with pass, foot-path	80	81
Stream with track in bed, underflow, canal	82	83
Dam, masonry or rock-fall, earthen, well	84	85
River: dry with water channel, with island & rocks, tidal river	86	87
Submerged rocks, shoal, swamp, reeds	88	89
Wells: lined, unlined, tube-well, spring, tank, perennial, dry	90	91
Embankment: road or rail, tank, broken ground	92	93
Railways, broad gauge: double single with station, under construction	94	95
Railways, other gauges: double single with station, under construction	96	97
Mineral line or tramway, Kin. Cutting with tunnel	98	99
Contours with sub-features: Rocky slopes, cliffs	100	101
Sand features (1 ft. dunes, hillocks, mounds) (Shaded relief)	102	103
Towns or villages: inhabited, deserted, fort	104	105
Habit. permanent, temporary, town, antiquity	106	107
Temple, Chhatra, Church, Mosque, Ghat, Tomb, Shrine, Grave	108	109
Lighthouse, Lightship, buoy, lighted, unlighted, Anchorage	110	111
Mine: View on hills, Grass, Soil	112	113
Palms, palm-tree, other plants, Conifer, Bamboo, Other trees	114	115
Area: cultivated, wooded, Surveyed tree	116	117
Boundary, international	118	119
State demarcated, undemarcated	120	121
State subdivision: sub-division, taluk, tehsil, forest	122	123
Boundary pillar: surveyed, unlocated	124	125
Height, triangulation station: point, approximate	126	127
BM 83-3, BM 83-4, BM 83-5	128	129
Post office, Telegraph office, Overhead line	130	131
Post house or inspection banglow, District house, Police station, St.	132	133
Camping ground, Forest, reserved, protected	134	135
Special names: administrative, locality or tribal	136	137
Hospital, Dispensary, Veterinary, Hospital, Dispensary	138	139
Airfield, Helipad, Tourist site	140	141
Power line, with pylons surveyed, with poles unsurveyed	142	143

REFERENCE

PWD: Public Works Department.

NOTES

Heights are in metres and above Indian mean sea level.  
Contours are approximate.  
A relative height, e.g., 100, represents the approximate height, in metres, between the top and bottom of a steep slope.  
The triangulation figures and contours in this sheet have not been adjusted to the heights of the approved bench-marks and may not be strictly in accordance with them.  
The administrative boundaries appearing in this sheet have been surveyed as pointed out by the local officials on the ground, but have not yet been verified by the authorities concerned.  
The exterior boundaries of areas of Reserved or Protected Forests are shown by green islands.

COMPILED INDEX

A. Surveyed during 1972-73. Updated for major details during 2005-08.



Projection - UTM Datum - WGS 84

Magnetic Variation from True North about 1/2° West in 2005.  
(Decreasing by about 1° annually)

Scale 1:50,000  
Metres 500 600 700 800 900 1000 1100 1200 1300 1400 1500 1600 1700 1800 1900 2000  
Kilometres 0 1 2 3 4 5 6 7 8 9 10

CONTOUR INTERVAL 20 METRES

For further details about this map, please contact:

Director

Chhattisgarh Geo-Spatial Data Centre

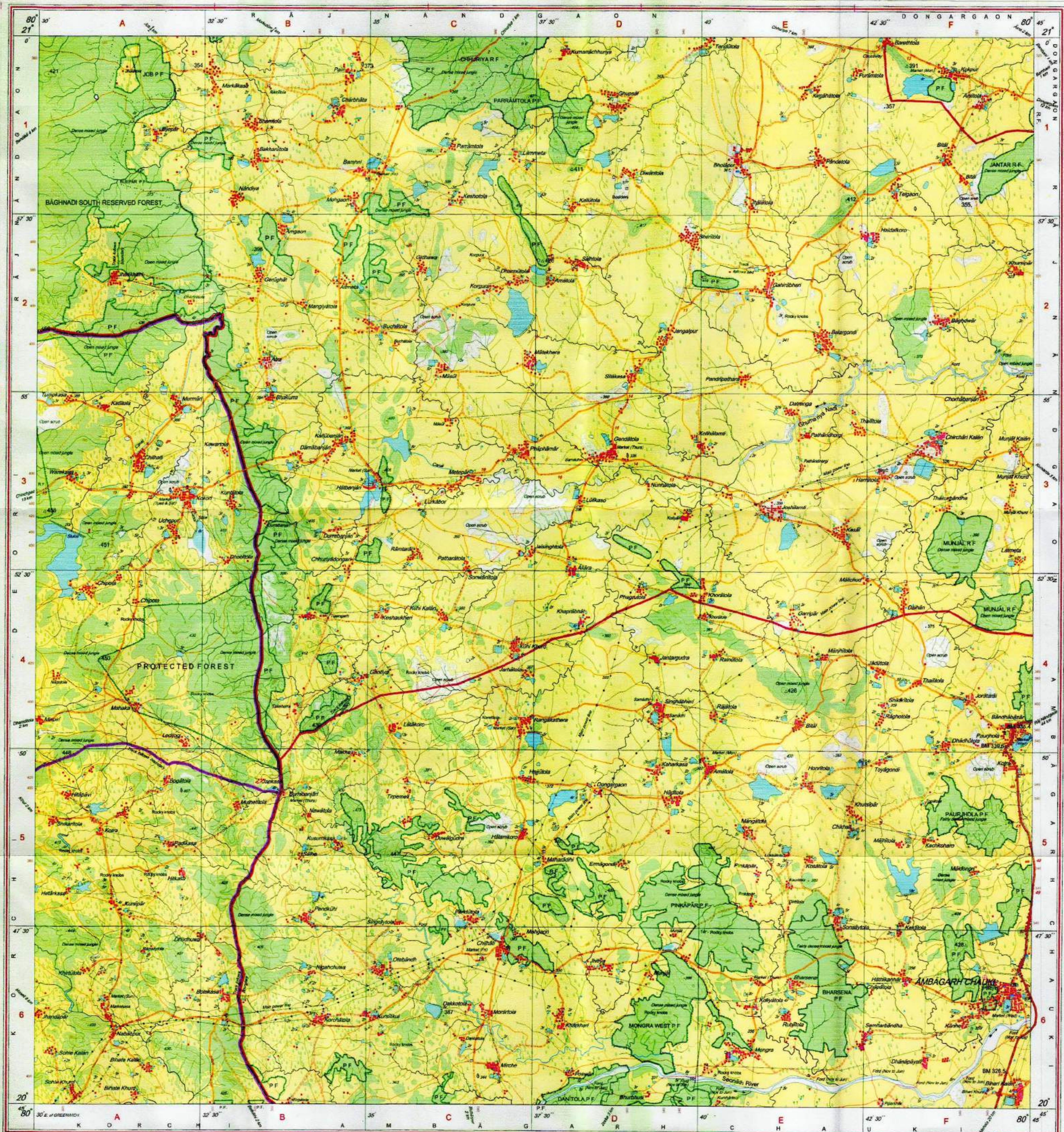
Survey of India, Pachpedi Naka

Raipur.

WEBSITE - www.surveyofindia.gov.in

Reproduction in whole or part by any means is prohibited  
without the written permission of Survey of India, the  
National Mapping Agency.

GOVERNMENT OF INDIA COPYRIGHT, 2012



REG. No. 9379-SGS D/10 (Chhattisgarh) GDC-199,000-1013-12

भारत के सर्वेक्षण विभाग द्वारा तैयार किया गया, के प्रिंटिंग के अधिकार, प्रकाशित की दिशा में Dr. Swarna Subba Rao, Surveyor General of India, Survey of India, Hattishankar Estate, Post Box No. 37, Delhi D-110 048 (Uttar Pradesh), Department of Science & Technology, Government of India.

PRINTED AT THE SOUTHERN PRINTING WORKS OF SURVEY OF INDIA.

Executive Engineer  
National Highway Dn. No. 1 R.M.F.  
RAIPUR (C.G.)

यन में से अधिकारी  
राज्यीय वनमंडल (ज.ग.)





No. F44U13

Scale 1:50,000

F44O12 (64C12)	F44O16 (64C16)	F44P4 (64H4)
F44U9 (64D9)	F44U13 (64D13)	F44V1 (64H1)
F44U10 (64D10)	F44U14 (64D14)	F44V2 (64H2)

1 Garhchhol, MAHARASHTRA  
2 Gondia, MAHARASHTRA

भारतीय सर्वेक्षण विभाग

SURVEY OF INDIA

1st Edition 2012

Price: Rs 77/-

#### CONVENTIONAL SYMBOLS

Express highway with toll, with distance stone	...
Roads, metalled, according to importance	...
Roads, double carriageway, according to importance	...
Unmetalled road, Cart track, Pack-track with pass, Foot path	...
Streams with track in bed, unmetalled, Canal	...
Dam: masonry or rock-filled, earthwork, Water	...
River, dry with water channel, with island & rock, Tidal river	...
Submerged rock, Shoal, Swamp, Reeds	...
Wells: lined, unlined, Tube-well, Spring, Tanks: permanent, dry	...
Embankment road or rail line, Broken ground	...
Railways, broad gauge: double single with station, under construction	...
Railways, other gauges: double single with station, under construction	...
Mixed line of railway, K.M. Cutting with tunnel	...
Contours with sub-features, Rocky slopes, Gullies	...
Sand features: (1) dune (2) sand ridge (3) sand spit (4) sand bar	...
Towns or Villages: inhabited, deserted, Fort	...
Huts: permanent, temporary, Towers, Antennae	...
Temples, Church, Mosque, Light, Tomb, Graves	...
Lighthouse, Lightship, Buoy: lighter, unlighted, Aid-navigational	...
Mine, Vine on trellis, Grass, Scrub	...
Palms: palm trees, other, Plantain, Conifer, Bamboo, Other trees	...
Arrest: cultivated, wooded, Surveyed tree	...
Boundary: international	...
State: demarcated, undemarcated	...
district, sub-division, taluk or tehsil, forest	...
boundary: surveyed, unsurveyed	...
heights, triangulation station, peak, approximate	...
bench-mark: geodetic, tertiary, casual	...
Post office, Telegraph office, Overhead tank	...
Rest house or inspection bungalow, Circuit house, Police station	...
Camping ground, Forest: reserved, protected	...
Spaced names, administrative, locality or tribal	...
Hospital, Dispensary, Veterinary Hospital / Dispensary	...
Airfield, Helipad, Tourist site	...
Power line: with pylons surveyed, with poles unsurveyed	...

#### NOTES

Heights are in metres and above Indian mean sea level.  
Contours are approximate.  
A relation height, e.g., 100, indicates the approximate height, in metres, between the top and bottom of a steep slope.  
Cultivated areas are coloured yellow.  
The outer boundaries of areas of Reserved or Protected Forests are shown by green ribbons.  
The triangulation heights and contours in this sheet have not been adjusted to the heights of the spirit-levelled bench-marks and may not be strictly in accordance with them.

#### COMPILED INDEX

A	Surveyed during 1972-73. Updated for major details during 2005-06.
---	--

Projection - UTM Datum - WGS 84

Magnetic Variation from True North about 1° West in 2005.

(Decreasing by about 1° annually)

1:50,000

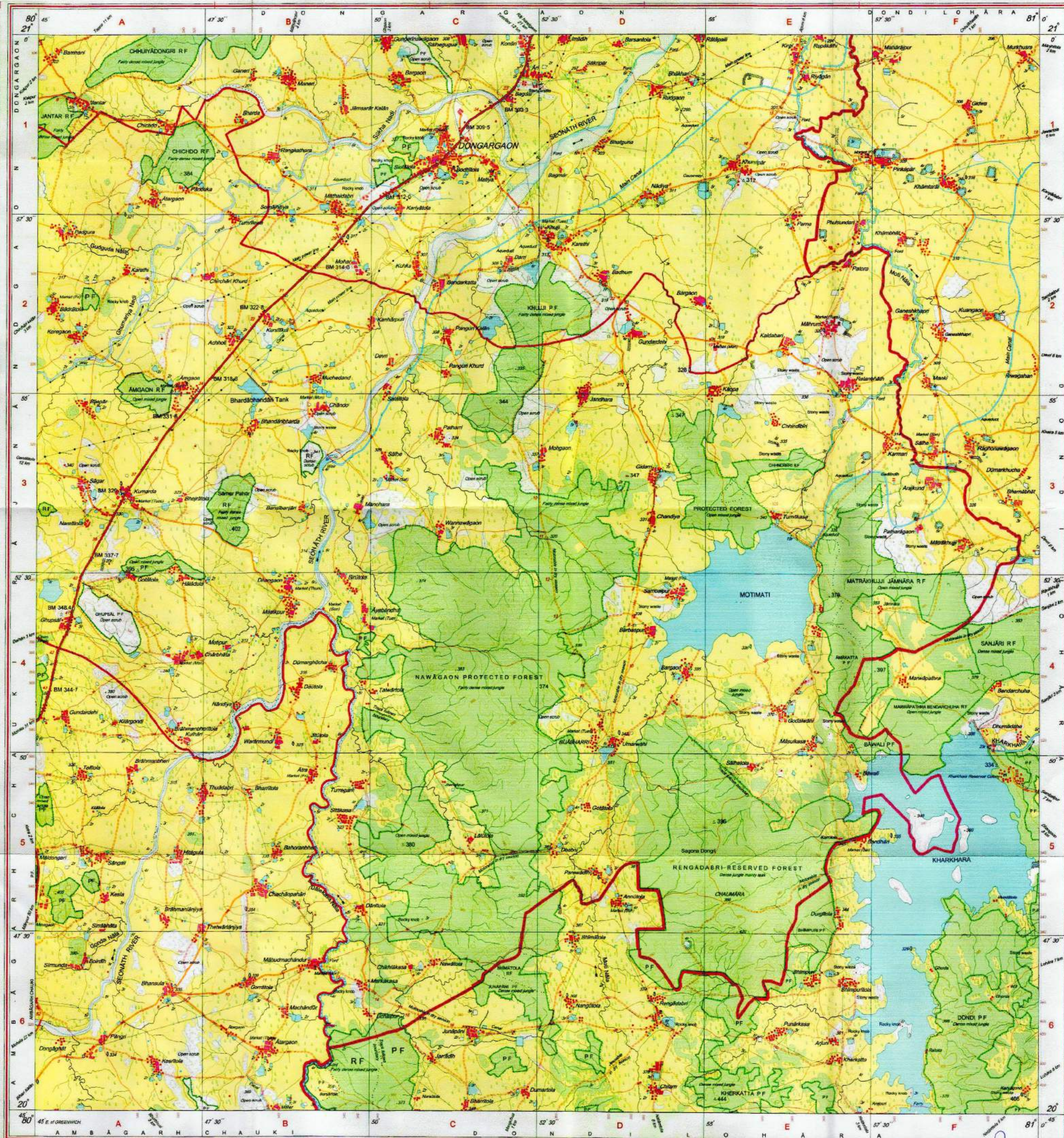
Scale 1:50,000  
3 Kilometres

For further details about this map, please contact  
Director  
Chhattisgarh Geo-Spatial Data Centre  
Survey of India, Pachpedi Naka  
Raipur.

WEBSITE - www.surveyofindia.gov.in

Reproduction in whole or part by any means is prohibited  
without the written permission of Survey of India, the  
National Mapping Agency.

GOVERNMENT OF INDIA COPYRIGHT, 2012



REG. No. 9781-SPG D-10 (Chhattisgarh GDC-1:50,000-1015 '12)

Published under the direction of Dr. Suresh Subba Rao, Surveyor General of India,  
Survey of India, Hishikurk Estate, Post Box No. 37, Dehra Dun - 248001 (Uttarakhand),  
Department of Science & Technology, Government of India.

Executive Engineer  
National Highway No. 4 R.M.T.  
RAIPUR (C.G.)

यन मंडल अधिकारी  
राजनाथगिरि वनमंडल (अ.न.)