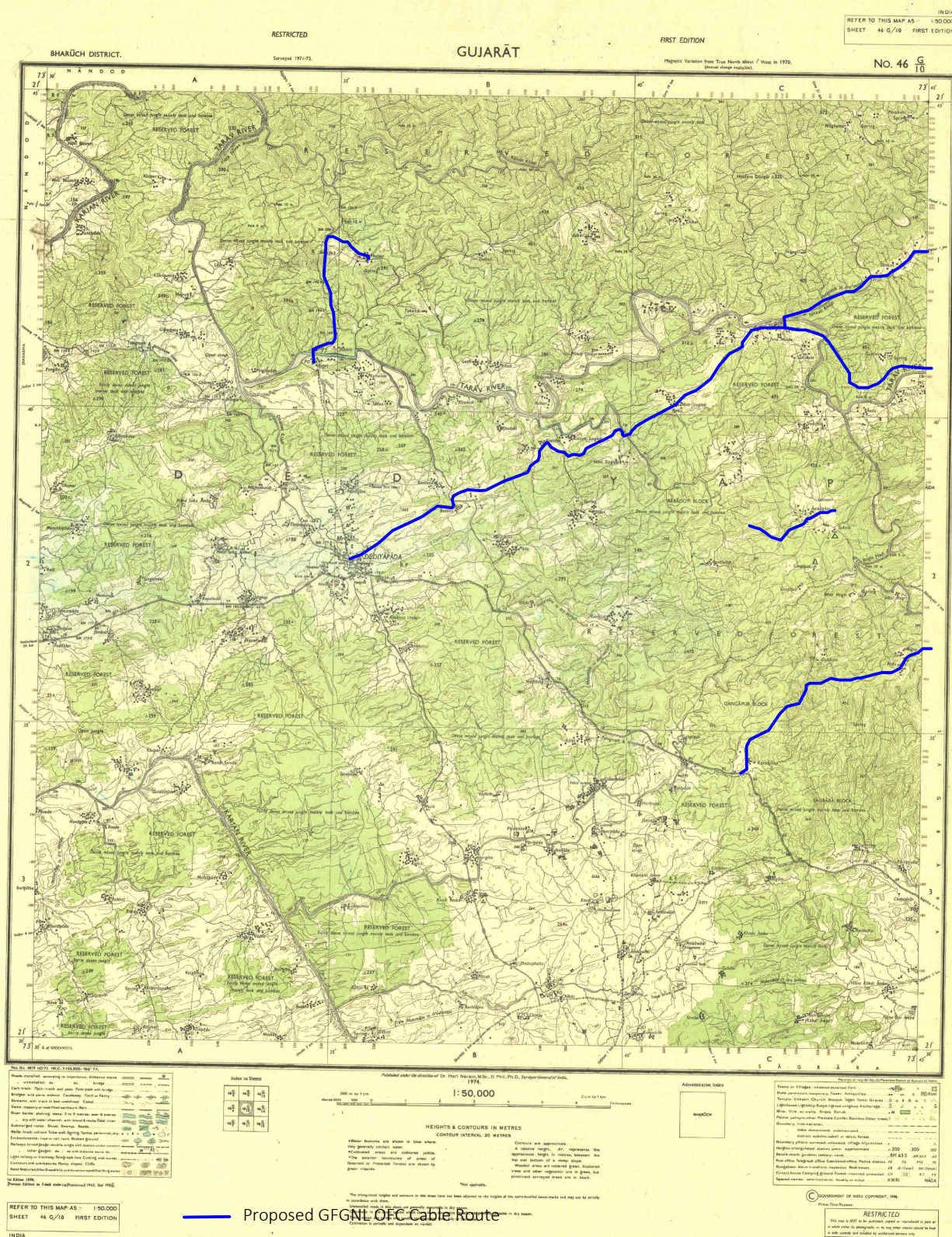
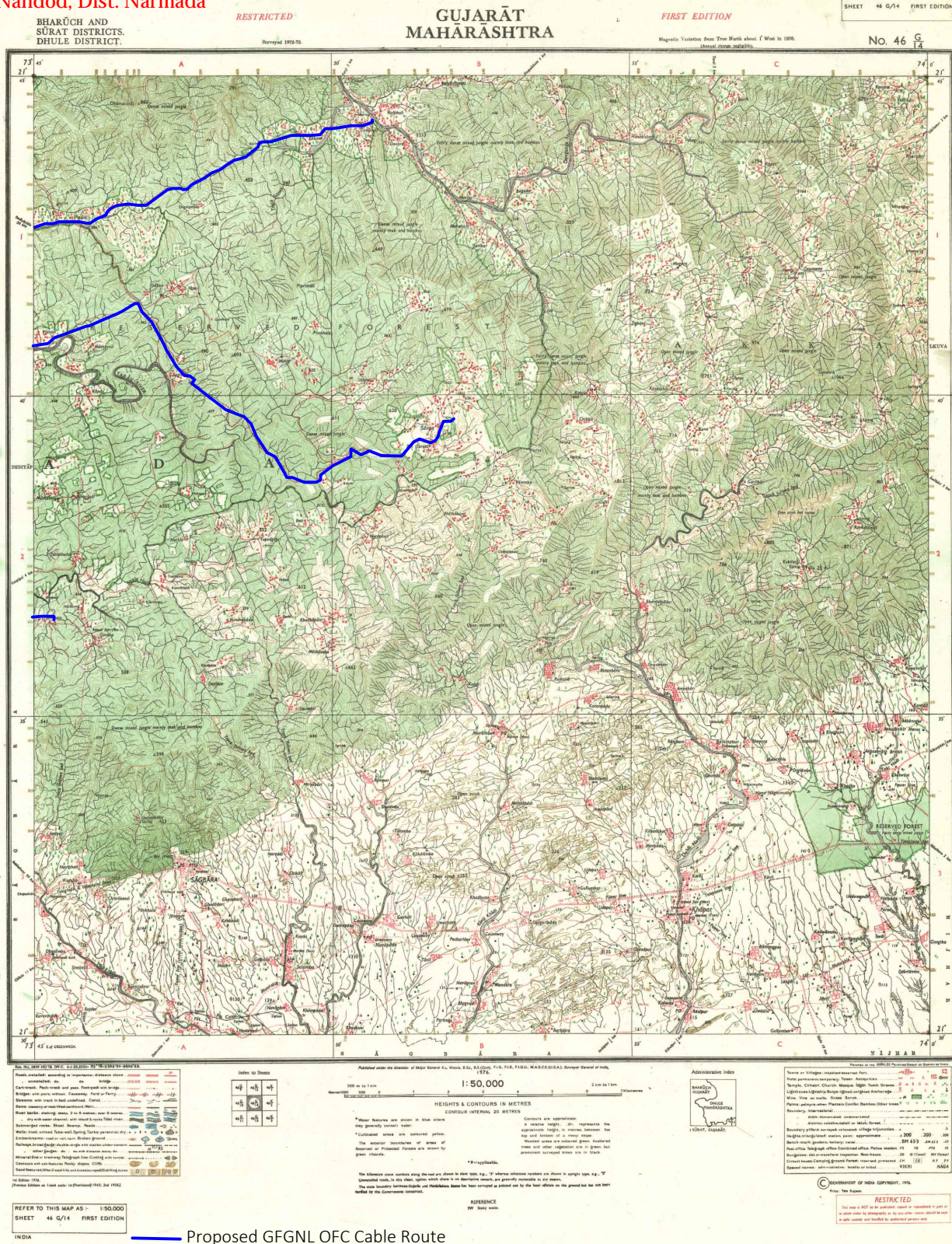


## Proposal for Diversion of 1.90 ha. Reserved forest land (ESZ) for the grant permission for laying GFGNL Optical Fiber Cable line along the Shoolpaneshwar sanctuary area in Ta. Dediypada and Nandod, Dist. Narmada





# Proposal for Diversion of 1.90 ha. Reserved forest land (ESZ) for the grant permission for laying GFGNL Optical Fiber Cable line along the Shoolpaneshwar sanctuary area in Ta. Dediapada and Nandod, Dist. Narmada



Proposed GFGNL OFC Cable Route