



निर्यात के लिए नहीं NOT FOR EXPORT

OPEN SERIES
MAP

No. D43V7
Scale 1:50,000

D43V2 (48P/2)	D43V6 (48P/6)	D43V10 (48P/10)
Kasaragod KERALA D43V3 (48P/3)	D43V7 (48P/7)	Kodagu KARNATAKA D43V11 (48P/11)
D43V4 (48P/4)	Kannur KERALA D43V8 (48P/8)	D43V12 (48P/12)

1 Hassan, KARNATAKA.

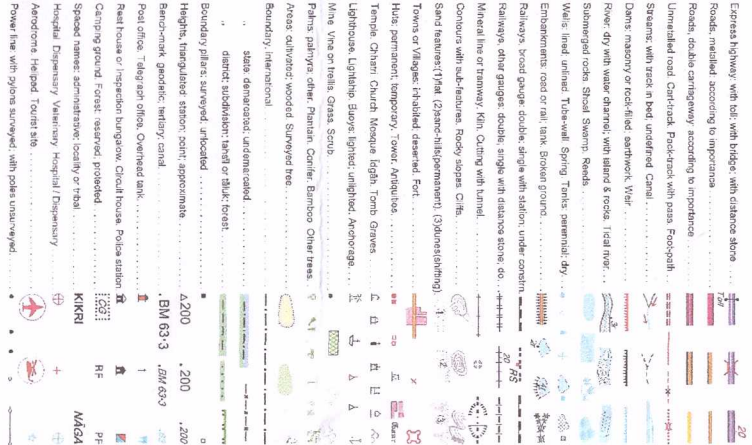
भारतीय सर्वेक्षण विभाग

SURVEY OF INDIA

1st Edition 2010.

Price : Rs. 70/-

CONVENTIONAL SYMBOLS



NOTES :-

Heights and Contours have not been shown.
A relative height e.g. 6' represents the approximate height in metres, between the top and bottom of a steep slope.
Contours are not shown where they are not available, are negligible in dry season.
Crested marshes are shown thus: 2

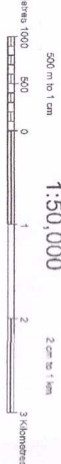
COMPILED INDEX
A. Surveyed during 1958-60, updated for major details during 2005-06



Projection - UTM Datum - WGS 84

Magnetic Variation from True North about 2 1/2° West in 2005
(Decreasing by about 1° annually)

1:50,000



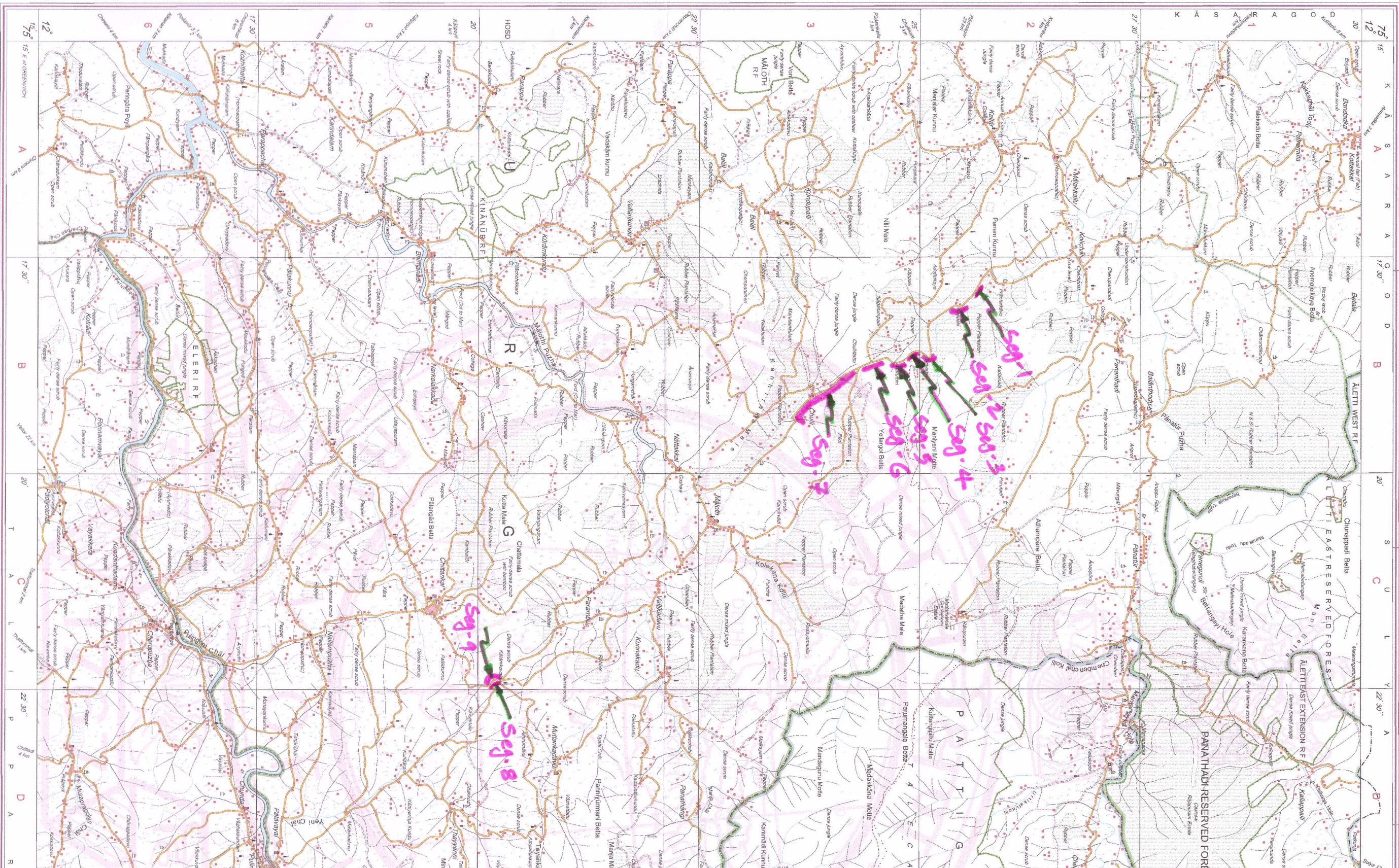
For further details about this map, please contact

Director
Kerala and Lakshadweep Geo-Spatial Data Centre
Survey of India, CGO Complex
Pookkulam, Vellayani P.O., Thiruvananthapuram.

WEBSITE : www.surveyofindia.gov.in

Reproduction in whole or part by any means is prohibited
without the written permission of Survey of India, the
National Mapping Agency.

GOVERNMENT OF INDIA COPYRIGHT 2010.



REC. No. P.O.F. - 5870/2/3 (Kerala & Lakshadweep) G.C.C. 156/003

Printed under the direction of Surveyor General of India,
Hathibakale Estate, Post Box No.37, Dehra Dun-248001 (Uttarakhand).
Department of Science & Technology, Government of India.