

मध्य प्रदेश
MADHYA PRADESH

F/15
FIRST EDITION

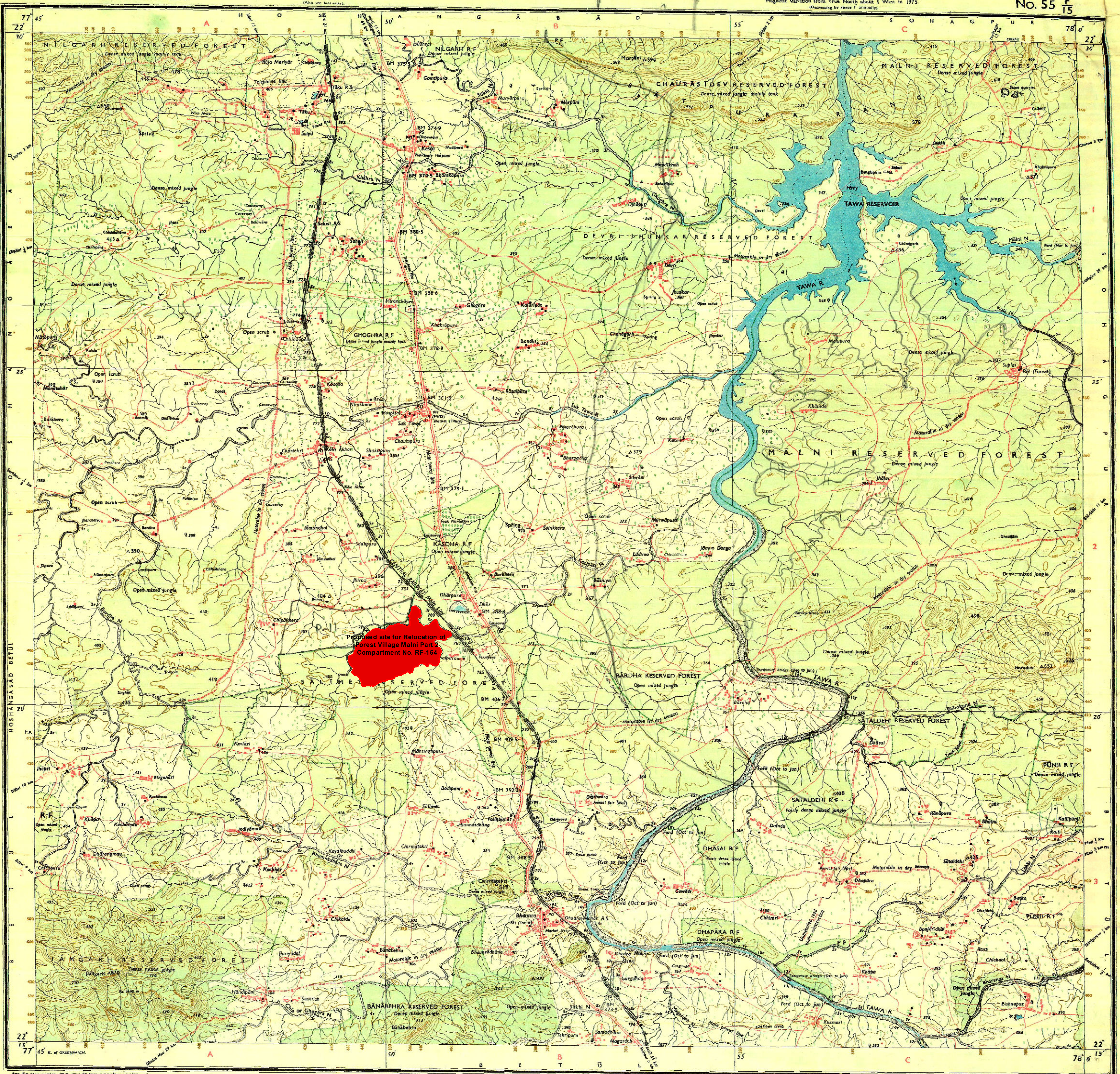
REFER TO THIS MAP AS -
SHEET 55 F/15 FIRST EDITION

No. 55 F/15

BETUL & HOSHANGABAD DISTRICTS.

Surveyed 1975-76.
(After one inch scale).

Magnetic Variation from True North about 1° West in 1975.
(Increasing by about 1' annually).



Ref. No. S. 55 F/15 (E.C. 55 F/15) 55 F/15

Legend:
Roads: metalled, unmetalled, cart track, foot-track, etc.
Bridges: permanent, temporary, etc.
Railways: main line, branch line, etc.
Canals: open, covered, etc.
Water: rivers, streams, tanks, etc.
Vegetation: forest, scrub, etc.
Settlements: village, town, etc.
Other: etc.

Index to Sheets

55 F/10	55 F/11	55 F/12
55 F/13	55 F/14	55 F/15
55 F/16	55 F/17	55 F/18

Scale: 1:50,000
500 m to 1 cm
1 inch to 1.25 miles

HEIGHTS & CONTOURS IN METRES
CONTOUR INTERVAL 20 METRES

*Water features are shown in blue where they generally occur in water.
*Contours are shown in brown where they generally occur in water.
*Contours are shown in brown where they generally occur in water.

Administrative Index
HOSHANGABAD
BETUL

Legend:
Towns or Villages: inhabited, uninhabited, etc.
Hills, mountains, etc.: etc.
Temples, etc.: etc.
Lighthouses, etc.: etc.
Mines, etc.: etc.
Bridges, etc.: etc.
Canals, etc.: etc.
Water, etc.: etc.
Vegetation, etc.: etc.
Settlements, etc.: etc.
Other, etc.: etc.

1st Edition 1980
(Previous Edition on 1-inch scale: 1975/45)

REFER TO THIS MAP AS -
SHEET 55 F/15 FIRST EDITION

INDIA

55 F/15

All set tracks, in this sheet, are generally popular in dry season.
The circled heights and contours in this sheet have not been adjusted to the heights of the spot-levelled benchmarks, and may not be strictly in accordance with them.
This sheet has been compiled from 1:25,000 survey.

GOVERNMENT OF INDIA COPYRIGHT, 1980.