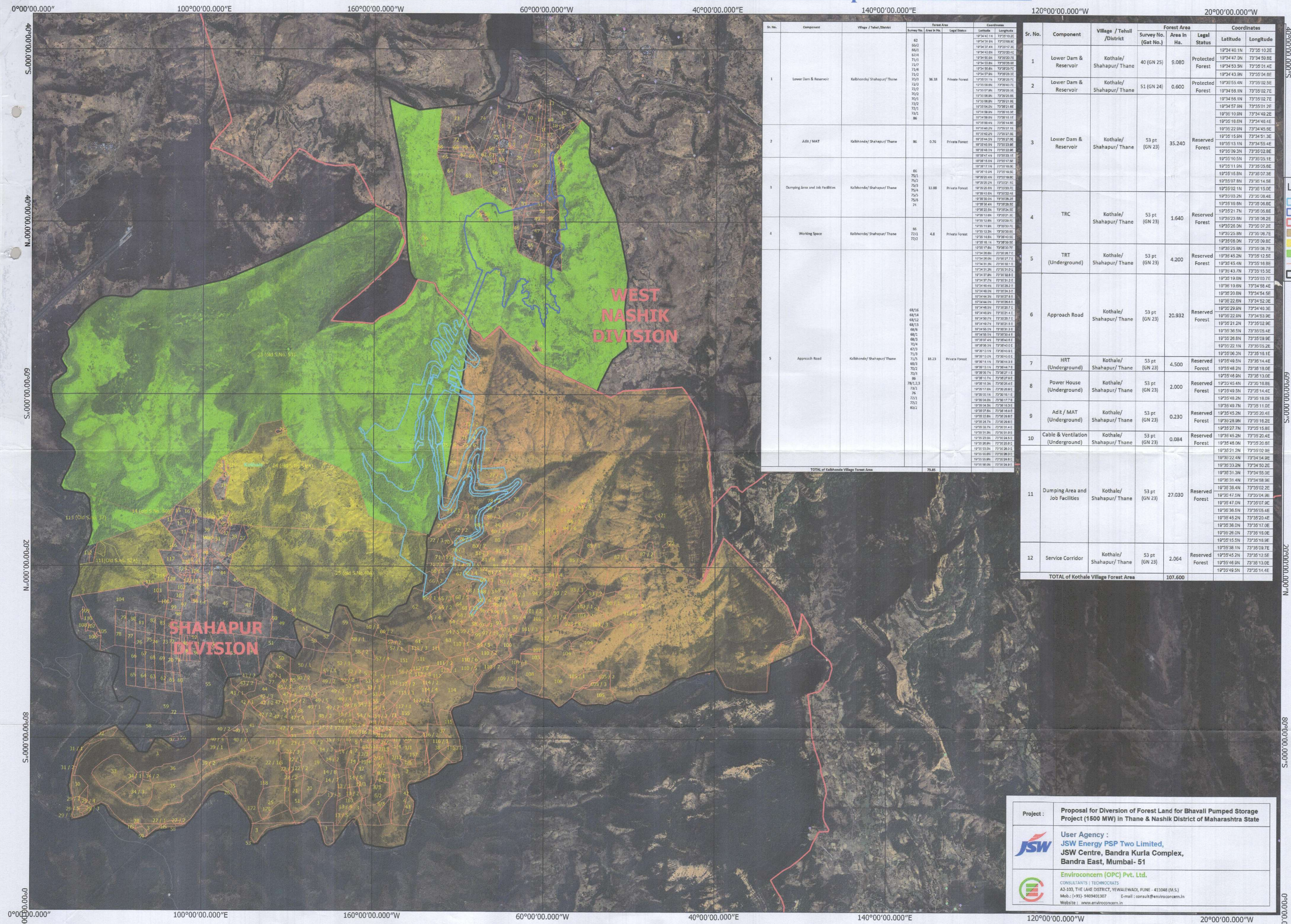


Proposal for Diversion of Forest Land for Bhavali Pumped Storage Project (1500 MW) in Thane & Nashik District of Maharashtra State : Shahapur Forest Division



Sr. No.	Component	Village / Tehsil / District	Forest Area		Legal Status	Coordinates	
			Survey No. / Area In Ha.	Area In Ha.		Latitude	Longitude
1	Lower Dam & Reservoir	Kothale/ Shahapur/ Thane	40 (GN 25)	9.080	Protected Forest	19°34'40.1N	73°35'10.2E
			51 (GN 24)			0.600	19°34'58.1N
2	Adit / MAT	Kothale/ Shahapur/ Thane	53 pt	35.240	Reserved Forest	19°35'15.6N	73°34'51.3E
			53 pt			1.640	19°35'23.8N
3	Dumping Area and Job Facilities	Kothale/ Shahapur/ Thane	53 pt	4.200	Reserved Forest	19°35'45.2N	73°35'11.0E
			53 pt			2.000	19°35'49.5N
4	Working Space	Kothale/ Shahapur/ Thane	53 pt	2.064	Reserved Forest	19°35'45.2N	73°35'12.5E
			53 pt			2.064	19°35'45.2N
5	Approach Road	Kothale/ Shahapur/ Thane	53 pt	20.932	Reserved Forest	19°35'29.6N	73°34'46.3E
			53 pt			4.500	19°35'48.2N
6	Approach Road	Kothale/ Shahapur/ Thane	53 pt	2.000	Reserved Forest	19°35'45.4N	73°35'18.8E
			53 pt			0.230	19°35'49.7N
7	HRT (Underground)	Kothale/ Shahapur/ Thane	53 pt	2.000	Reserved Forest	19°35'45.4N	73°35'18.8E
			53 pt			0.230	19°35'49.7N
8	Power House (Underground)	Kothale/ Shahapur/ Thane	53 pt	2.000	Reserved Forest	19°35'45.4N	73°35'18.8E
			53 pt			0.230	19°35'49.7N
9	Adit / MAT (Underground)	Kothale/ Shahapur/ Thane	53 pt	0.230	Reserved Forest	19°35'45.4N	73°35'18.8E
			53 pt			0.230	19°35'49.7N
10	Cable & Ventilation (Underground)	Kothale/ Shahapur/ Thane	53 pt	0.084	Reserved Forest	19°35'45.2N	73°35'20.4E
			53 pt			0.084	19°35'45.2N
11	Dumping Area and Job Facilities	Kothale/ Shahapur/ Thane	53 pt	27.030	Reserved Forest	19°35'45.2N	73°35'20.4E
			53 pt			27.030	19°35'45.2N
12	Service Corridor	Kothale/ Shahapur/ Thane	53 pt	2.064	Reserved Forest	19°35'45.2N	73°35'12.5E
			53 pt			2.064	19°35'45.2N
TOTAL of Kothale Village Forest Area			79.85				
TOTAL of Kothale Village Forest Area			107.600				

N

SCALE 1: 20000

Legend

- Project Boundary in Shahapur Division
- Project Boundary in East Nashik Division
- Division Boundary
- Private Forest (Deemed RF)
- Protected Forest
- Reserved Forest
- Gut Boundary
- Village Boundary

Project : Proposal for Diversion of Forest Land for Bhavali Pumped Storage Project (1500 MW) in Thane & Nashik District of Maharashtra State

User Agency : JSW Energy PSP Two Limited, JSW Centre, Bandra Kurla Complex, Bandra East, Mumbai - 51

Enviroconcern (OPC) Pvt. Ltd.
CONSULTANTS | TECHNOCRATS
A2-103, THE LAKE DISTRICT, YEWALEWADI, PUNE - 411048 (M.S.)
Mob: (+91)-9429401307 E-mail: consult@enviroconcern.in
Website: www.enviroconcern.in

Forest Surveyor
West Nashik Division
 Deputy Conservator of Forests
West Nashik