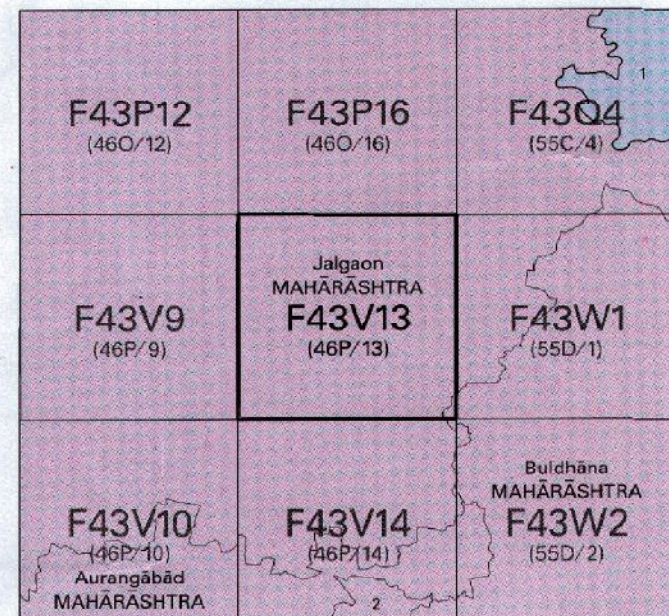




OPEN SERIES
MAP

No. F43V13

Scale 1:50,000



1 East Nimar, MADHYA PRADESH
2 Jilna, MAHARASHTRA

भारतीय सर्वेक्षण विभाग SURVEY OF INDIA

1st Edition 2011.

₹ 118/- Rs. 94/-

मानचित्र विक्रय केंद्र, पुणे.

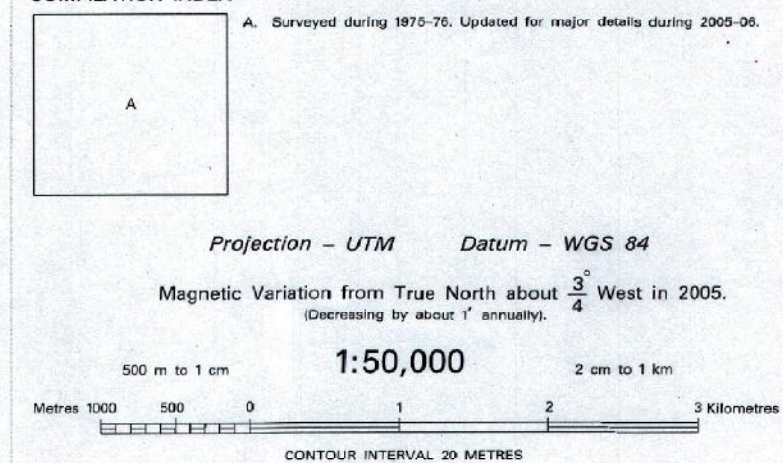
CONVENTIONAL SYMBOLS

- Express highway with toll with bridge with distance stone ...
Roads, metalled according to importance ...
Roads, double carriageway according to importance ...
Unmetalled road, Cart-track, Pack-track with pass, Foot-path ...
Streams with track in bed, underdrain, Canal ...
Dams, reservoir or rock filled, waterfalls, Weir ...
River, dry with water channel, with island & rook, Tidal river ...
Submerged rocks, Shoal, Swamp, Reeds ...
Wells: lined, unlined, Tube-well, Spring, Tank, perennial, dry ...
Embankments: road or rail, Bank, Broken ground ...
Railways, broad gauge, double, single with station under construction ...
Railways, other gauges: double, single with distance stone, do ...
Mineral line or tramway, Kib, Cutting with tunnel ...
Contours with sub-features: Rocky slopes, Cliffs ...
Sand features: (Hill) (Zand-hill) (german) (Bhoushik) ...
Towns or Villages: inhabited, deserted, Fort ...
Hills: permanent, temporary, Tower, Artillery ...
Temples, Chhatra, Church, Mosque, Ghat, Tomb, Graves ...
Lighthouses, Lightship, Buoy, lighted, unlighted, Anchorage ...
Mine, War or refuge, Ghat, Sink ...
Palms, railways, other, Plantain, Coffer, Bamboo, Other trees ...
Areas: cultivated, wooded, Surveyed tree ...
Boundary, international ...
state, demarcated, undemarcated ...
district, subdivision, tribal or tribal forest ...
Boundary pillars: surveyed, unlocated ...
Height, triangulated station, point, approximate ...
Bench-mark, geodetic, tertiary, canal ...
Post office, Telegraph office, Overhead tank ...
Rest house or inspection bungalow, Ghat house, Police station ...
Camping ground, Forest: reserved, protected ...
Spaced names: administrative, locality or tribal ...
Hospital, Dispensary, Veterinary Hospital / Dispensary ...
Aerodrome, Helipad, Tourist site ...
Power line: with poles surveyed, with poles unsurveyed ...

REFERENCE

- PWD - Public Works Department
Rly - Railway
- NOTES :-
Contours are approximate.
Heights are in metres and above mean sea level.
A relative height, e.g., 10, represents the approximate height in metres, between the top and bottom of a steep slope.
The triangulated heights and contours in this sheet have not been adjusted to the heights of the spirit-levelled bench-marks and may not be strictly in accordance with them.
Unmetalled roads, in this sheet, appear when there is no descriptive remarks are generally metalled in dry season.
A relative height e.g., 20, against a well, in blue, indicates its total depth in metres.
Important buildings are shown in black color.

COMPILATION INDEX

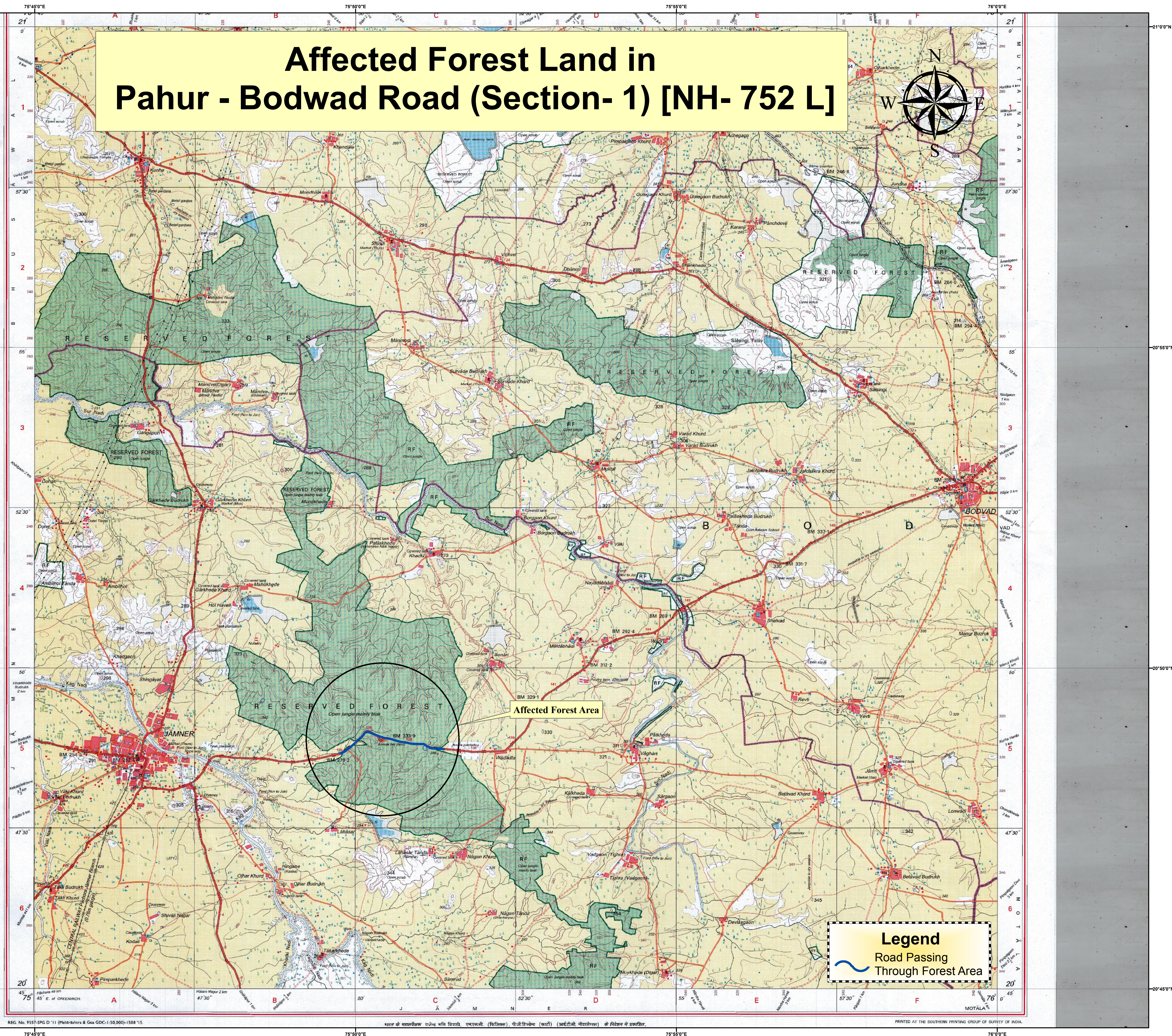


For further details about this map, please contact
Director
Maharashtra & Goa Geo-Spatial Data Centre
Survey of India, Phule Nagar, Aundli Road
Pune.

WEBSITE - www.surveyofindia.gov.in

Reproduction in whole or part by any means is prohibited

Affected Forest Land in Pahur - Bodwad Road (Section- 1) [NH- 752 L]



1 Centimeter equals to 1 Kilometer