

G44Q7 (63K/7)	G44Q11 (63K/11)	Vārānāsī UTTAR PRADESH (63K/15)
G44Q8 (63K/8)	G44Q12 (63K/12)	G44Q16 (63K/16)
G44W5 (63L/5)	G44W9 (63L/9)	G44W13 (63L/13)

1 Jaunpur, UTTAR PRADESH.
 2 Allahābād, UTTAR PRADESH.
 3 Sant Ravidās Nāgar, UTTAR PRADESH.
 4 Rewa, MADHYA PRADESH.

भारतीय सर्वेक्षण विभाग SURVEY OF INDIA
 1st Edition 2011. Price : Rs. 70/-

CONVENTIONAL SYMBOLS

Express highway with toll with bridge with distance stone	
Roads, metalled according to importance	
Roads, double cartway according to importance	
Unmetalled road. Cart track. Pack-track with pass. Foot-path	
Streams with truck in boat, unmetalled. Canal	
Dams: masonry or rock-filling, earthwork. Weir	
River, dry with water channel, with island & rocks. Tidal river	
Submerged rocks. Shoal. Swamp. Reeds	
Well: lined, unlined. Tubewell. Spring. Tanks: perennial, dry	
Embankment: road or rail, bank. Broken ground	
Railways, broad gauge: double, single with station; under constn	
Roadways, other gauges: double, single with distance stone, etc.	
Material line or tramway. Kin. Cutting with tunnel	
Contours with sub-features. Rocky slopes. Cliffs	
Sand features (Tidal, 2 sand-ridge, salt-pan, etc.) (dunes, shifting)	
Towns or Villages: inhabited, deserted, Fort	
Hulk: permanent, temporary. Tower. Antiquities	
Temples, Chhatris, Church, Mosque, Idgah, Tomb, Graves	
Lighthouse, Lightship, Buoy, lighted, unlighted. Anchorage	
Mine, Vine on trellis. Grass. Scrub	
Plants: papyrus, other. Plantain, Coriander, Bamboo, Other trees	
Areas: cultivated, wooded, surveyed tree	
Boundary, international	
state, demarcated, undemarcated	
district, subdivision, taluk or block, forest	
Boundary pillars: surveyed, unlocated	
Heights, triangulated, station, point, approximate	
Benchmark, geodetic, tertiary, canal	
Post office, Telegraph office, Overseas bank	
Rest house or inspection bungalow, Circuit house, Police station	
Camping ground, Forest: reserved, protected	
Spotted names: administrative, locality or tribal	
Hospital, Dispensary, Veterinary Hospital, Dispensary	

Legend

- Proposed Reserve Forest land to be Diverted
- Non Forest Land
- Proposed Protected Forest land to be Diverted

REFERENCES
 NH-7 National Highway No. 7. FD Foot bridge

NOTES
 Heights are in metres and above Indian mean sea level. Contours are appropriate. A relative height, e.g., 50, represents the approximate height, in metres, between the top and bottom of a steep slope. The kilometre numbers along canals, roads and railways are shown in slant type, e.g., 2, whereas milestone numbers are shown in upright type, e.g., 5. The triangulated heights and contours in this sheet have not been adjusted to the heights of the approved benchmarks, and may not be strictly in accordance with them. The area adjoining the Ganga river is liable to change owing to continual fluctuation in the course of the river. Wells are numerous throughout the sheet and tubewells only in the northern half; only the important ones have been shown. Tanks, shown dry, in this sheet usually contain water from July to December. All cart-tracks and unmetalled roads along canals are motorable in dry season. Permission to use these is required from the irrigation authorities.

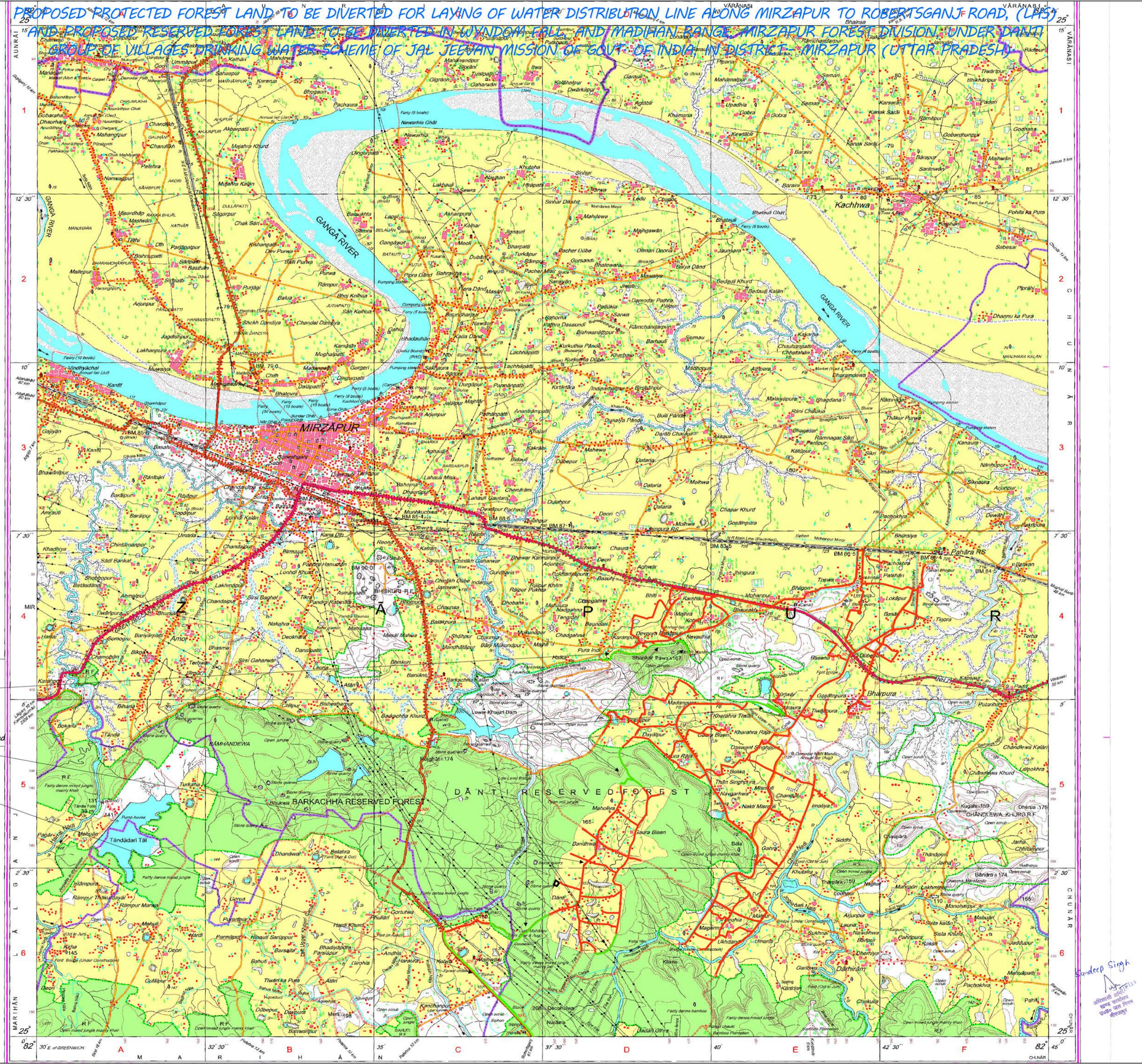
COMPILATION INDEX
 A Modern Survey 1970-71 | updated for major details during 2005-06 and administrative boundaries updated during 2008-09

Projection - UTM Datum - WGS 84
 Magnetic Variation from True North about 1/4° West in 2005. (Decreasing by about 1' annually)

500 m to 1 cm 1:50,000 2 cm to 1 km
 METRES 1000 500 0 1 2 3 Kilometres
 CONTOUR INTERVAL 10 METRES

For further details about this map, please contact
 Director
 East Uttar Pradesh Geo-Spatial Data Centre
 Survey of India
 B-2 Block, 2nd Floor, PICUP Bhaban, Gomti Nagar, Lucknow.

WEBSITE - www.surveyofindia.gov.in



Sandeep Singh
 10/11/2011
 10/11/2011

No. G44W9
 Scale 1:50,000

G44Q8 (63K/8)	G44Q12 (63K/12)	G44Q16 (63K/16)
G44W5 (63L/5)	G44W9 (63L/9)	G44W13 (63L/13)
G44W6 (63L/6)	G44W10 (63L/10)	G44W14 (63L/14)

1 Sam Ravidas Nagar, UTTAR PRADESH.
 2 Vepandas, UTTAR PRADESH.
 3 Rewa, MADHYA PRADESH.
 4 Allahabad, UTTAR PRADESH.

भारतीय सर्वेक्षण विभाग SURVEY OF INDIA
 1st Edition 2011. Price: Rs. 70/-

CONVENTIONAL SYMBOLS

Express highway with lat. with bridge, with distance stone	
Roads, metalled, according to importance	
Roads, double carriageway, according to importance	
Unmetalled road Cart-track Pack-track with pass. Foot-path	
Streams with track in bed, undefined Canal	
Dam, masonry or unskiffed, earthwork, Weir	
River, dry with water channel, with island & rocks, Tidal river	
Submerged rocks, Shoal, Swamp, Reeds	
Wells, lined, unlined, Tube-well, Stump, Tanks, perennial, dry	
Embankments, road or rail, embankment	
Railways, broad gauge, double, single with station, under construction	
Railways, other gauges, double, single with distance stone, do.	
Mineral line of tramway, Kds, Cutting with tunnel	
Contours with sand-features, Rocky slopes, Cliffs	
Sand features (Tidal, Q/sand-hills) permanent (Siltstone) shifting	
Towns or Villages, inhabited, deserted, Fort	
Huts, permanent, temporary, Tower, Antennae	
Temples, Ghats, Church, Mosque, Idgah, Tomb, Graves	
Lighthouse, Lightship, Buoys, lighted, unlighted, Anchorage	
Mine, Vite on belts, Grass, Scrub	
Palms, palmiya, other, Plantain, Conifer, Bamboo, Other trees	
Areas, cultivated, wooded, Surveyed line	
Boundary, international	
state, demarcated, undemarcated	
State, subdivision, tahsil or Block, forest	
Boundary pillars, surveyed, unlocated	
Height, triangulated, station, point, approximate	
Bench-mark, geodetic, levelling, canal	
Post office, Telegraph office, Overhead tank	
Road house or inspection bungalow, Circuit house, Police station	
Camping ground, Forest, reserved, protected	
Spaced names, administrative, locality or title	
Hospital, Dispensary, Veterinary, Hospital, Dispensary	
Aerodrome, Helipad, Tourist site	
Power line, with pylons surveyed, with poles unsurveyed	

Legend

- Non Forest Land
- Proposed Protected Forest land to be Diverted
- Proposed Reserve Forest land to be Diverted

NOTES :-
 Heights are in meters and above Indian mean sea level.
 Contours are approximate.
 A relative height, e.g., 50, represents the approximate height, in metres, between the top and bottom of a steep slope.
 All Unmetalled roads and cart-tracks in this sheet are generally metable in dry season. Permission to use the cart-tracks along canals is received from the irrigation authorities.
 The kilometre stone numbers along roads are shown in short type, e.g., 5 whereas milestone numbers are shown in long type, e.g., 50.
 Tanks shown dry in this sheet, usually contain water from July to January.
 The common boundaries between Reserved Forests have not been shown for want of reliable information.

COMPILATION INDEX
 A. Modern Survey 1979-71. Updated for major details during 2009-07.

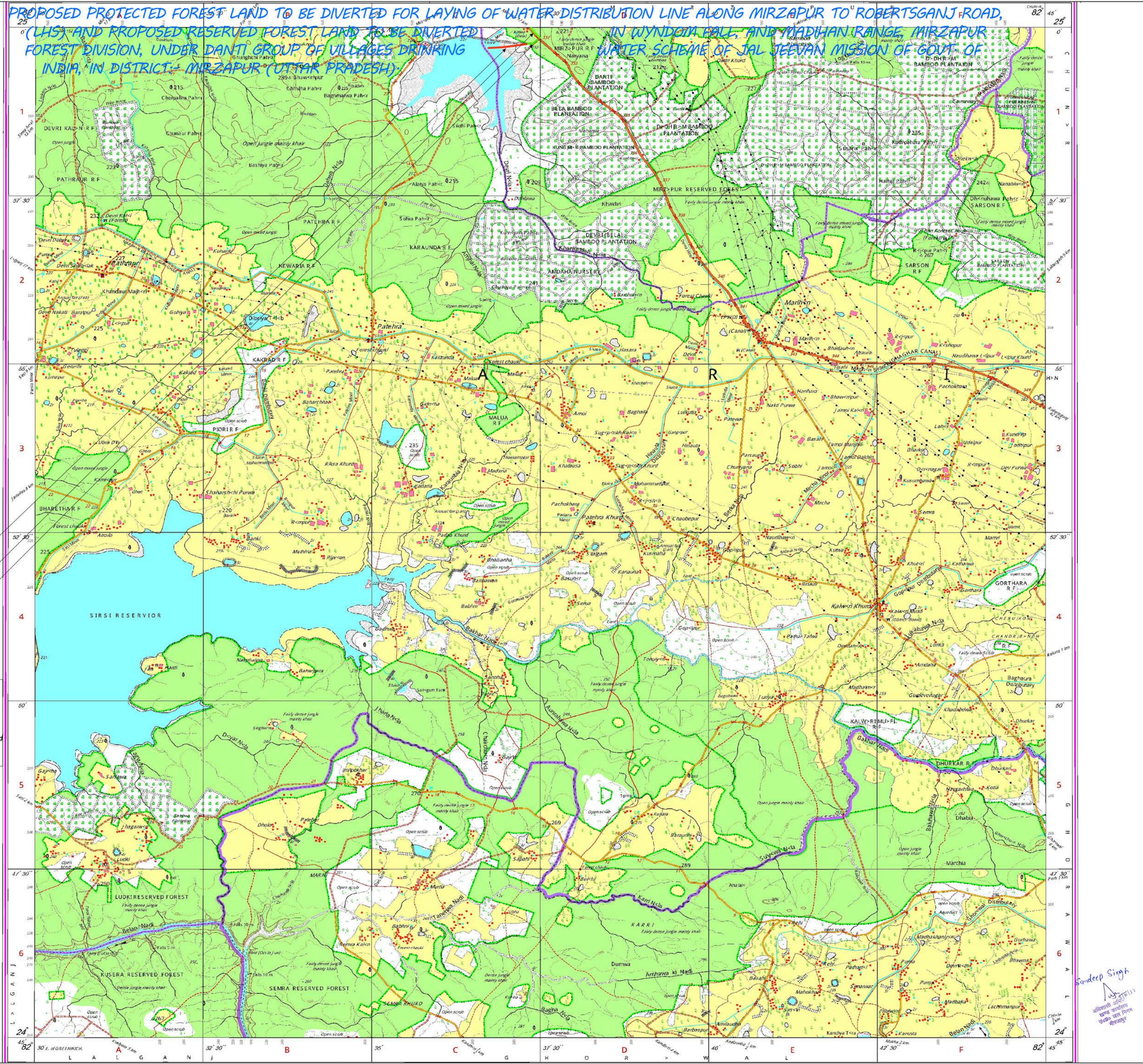
Projection - UTM Datum - WGS 84
 Magnetic Variation from True North about 1/2 West in 2005.
 (Decreasing by about 1' annually).

Scale: 1:50,000
 500 m to 1 cm, 2 cm to 1 km, 5 Kilometres

CONTOUR INTERVAL 20 METRES

For further details about this map, please contact
 East Uttar Pradesh Geo-Spatial Data Centre
 Survey of India
 B-2 Block, 2nd Floor, PICUP Bhawan, Gomti Nagar, Lucknow.

WEBSITE - www.surveyofindia.gov.in



Sandeep Singh
 20/07/2024
 20/07/2024