

Design Chainage				Remark
S. N.	From	To	Length (km.)	
1	39.200	42.200	3.000	
2	42.600	42.850	0.250	
3	43.100	43.800	0.700	
4	43.900	44.100	0.200	
5	44.300	44.500	0.200	
6	46.800	46.900	0.100	
7	46.950	47.050	0.100	
8	47.150	49.600	2.450	
9	49.700	51.400	1.700	
10	52.000	52.600	0.600	
11	52.700	52.900	0.200	
12	53.000	54.600	1.600	
13	55.100	55.610	0.510	
14	78.800	79.400	0.600	
15	79.700	80.500	0.800	
16	80.750	84.400	3.650	Sevagram village
17	85.400	86.050	0.650	
18	86.500	88.000	1.500	
Total Length (Km)			18.810	

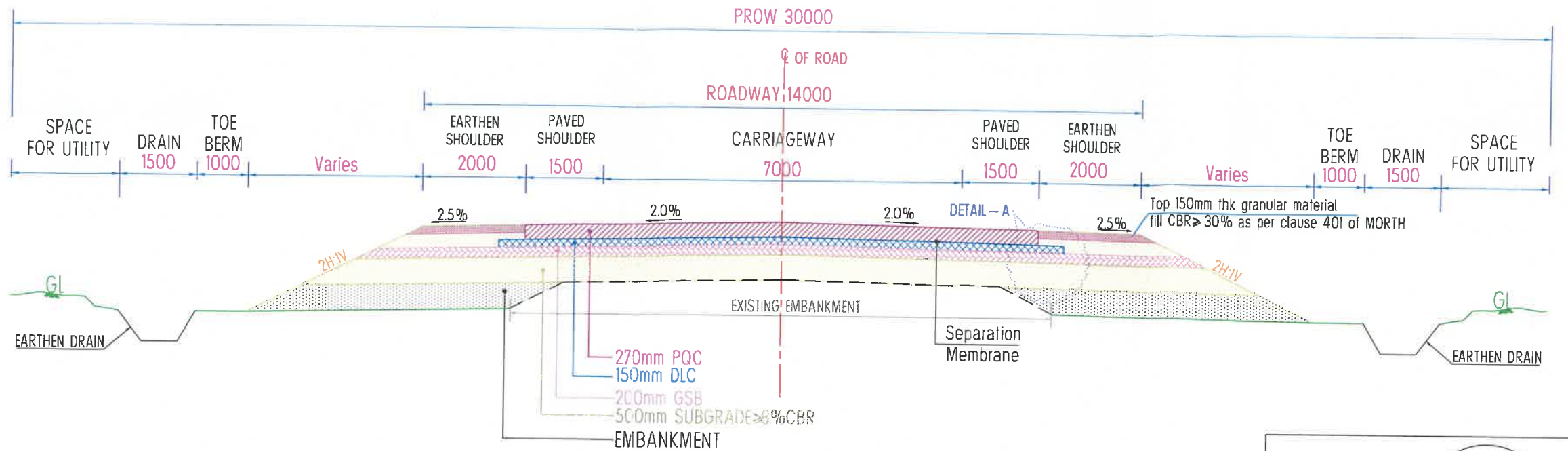
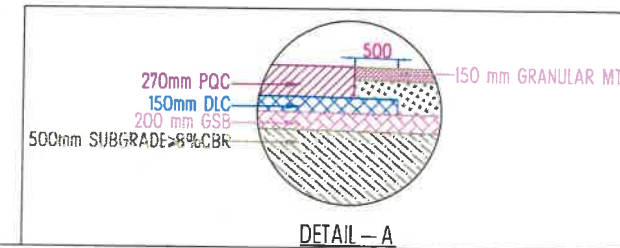


Fig.-1
Concentric widening to 2-Lane
with Paved shoulder
(Open Country Plain/ Rolling Terrain)

Note :- 1. The Shape & size of drain shall be as per drainage design.
2. All Dimension are in mm unless & Otherwise Specified.



Realignment Design Chainage				Remark
S. N.	From	To	Length (km.)	
1	42.200	42.600	0.400	
2	51.400	52.000	0.600	Marda Village
3	58.400	59.350	0.950	
4	63.300	63.700	0.400	
5	71.800	72.200	0.400	
6	76.550	77.200	0.650	
7	77.900	78.300	0.400	
8	79.400	79.700	0.300	
9	80.500	80.750	0.250	
10	86.050	86.500	0.450	
Total Length (Km)			4.800	

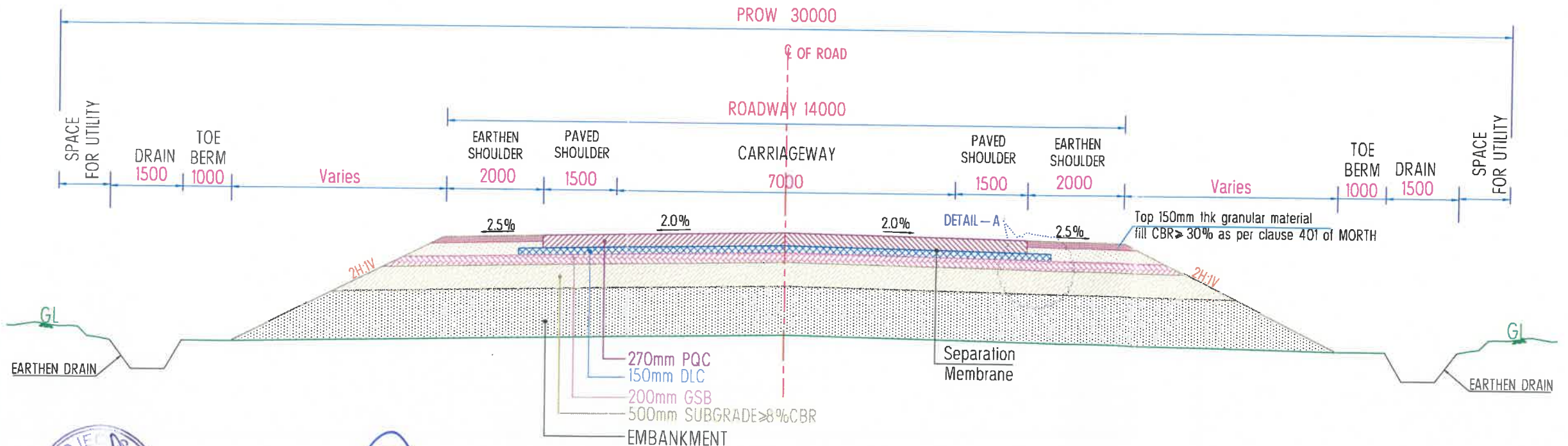
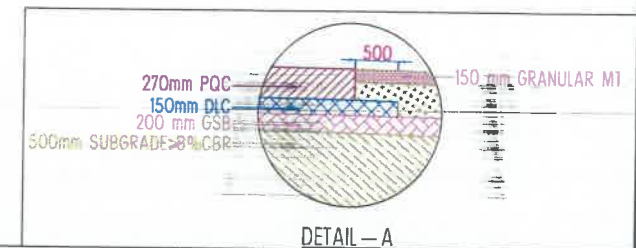


Fig.-2
Realignment/ Geometric Improvement to 2-Lane
with Paved shoulder
(Open Country Plain/ Rolling Terrain)

Note :- 1. The Shape & size of drain shall be as per drainage design.
2. All Dimension are in mm unless & Otherwise Specified.



Executive Engineer
National Highway Division
Nagpur.

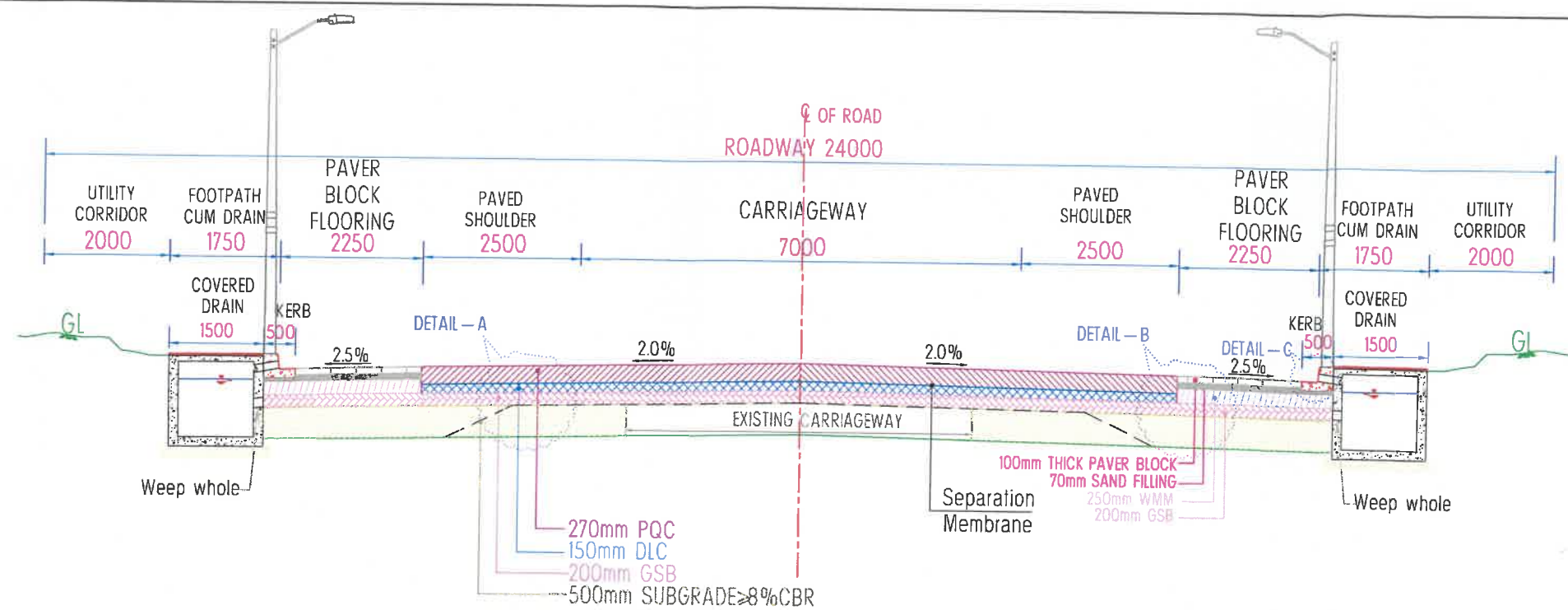
CLIENT -
MINISTRY OF ROAD TRANSPORT AND HIGHWAY
(N.H. DIVISION, PWD, MAHARASHTRA)

REV	DATE	DETAILS OF REVISION	DRAWN	CHECKED	APPROVED
RO	08-01-2017	DRAFT FEASIBILITY REPORT	A.A.K.	A.M.	S.B.M.

CONSULTANT -
K & J Projects Pvt. Ltd.
Shivam, 16 NIT Layout, Ravinagar,
Nagpur-440033 Maharashtra, India.
Ph : (0712)2556402, Fax : 2556403
Email : contact@knjprojects.com

NAME OF WORK:
Up-gradation of NH-3531 starting from Wadi connecting to Hingna T point Isasani-Mihan-Outer Ring Road-Gumgaon-Salaidhabha-Butibori MIDC-Takalhat-Khapri Moreswar-Asola-Sindi Railway-Pavnar to Two Lane with Paved Shoulder configuration in section from Seldoh Junction (Existing km. 45+700 (NH-361) to Kandhali Junction (Existing km. 49+200 (NH-44) & From Kandhali Junction (Existing km. 49+200 (NH-44) connecting Sevagram to Pavnar Junction (Existing km. 68+000 (NH-361) [Design km.39.200 to km. 88.540] Design Length- 49.340 Km in the State of Maharashtra on EPC Mode

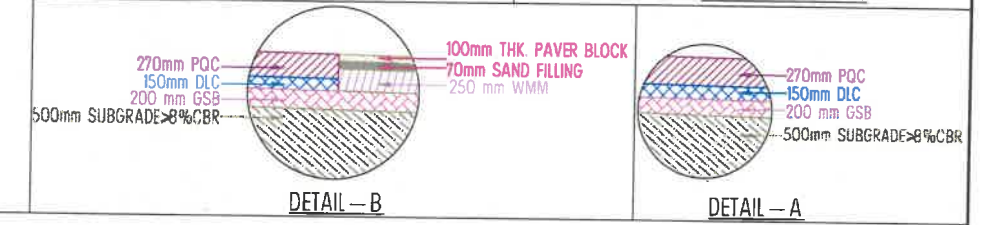
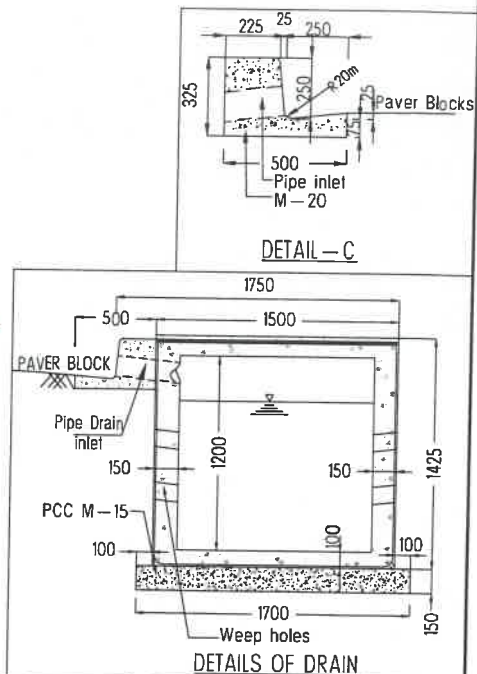
DRG. NO. 00392/KJ/DFR/SKSP/PK-II/TYPCS-1
SCALE NTS
TITLE: TYPICAL CROSS SECTION
Fig. No. 1 & 2



Design Chainage				Remark
S. N.	From	To	Length (km.)	
1	45.400	46.000	0.600	Sindhi railway
2	54.600	55.100	0.500	Kandhali village
3	61.200	61.600	0.400	Waigaon village
4	64.000	64.400	0.400	Parsoda village
5	65.900	66.900	1.000	Hamdapur village
6	69.600	70.200	0.600	Deulgaon village
7	78.300	78.800	0.500	Kharangana village
8	88.000	88.540	0.540	Pavnar village
Total Length (Km)			4.540	

Note :- 1. Depth of RCC Drain Shall Vary as per Adjoining GL.
 2. All Dimension are in mm unless Otherwise Specified.
 3. The Paver Block width may varies as per available ROW

Fig. - 3a
 Concentric widening to 2-Lane with Paved shoulder in Built-up section (Built-up Section Plain/Rolling Terrain)



Executive Engineer
 National Highway Division
 Nagpur.

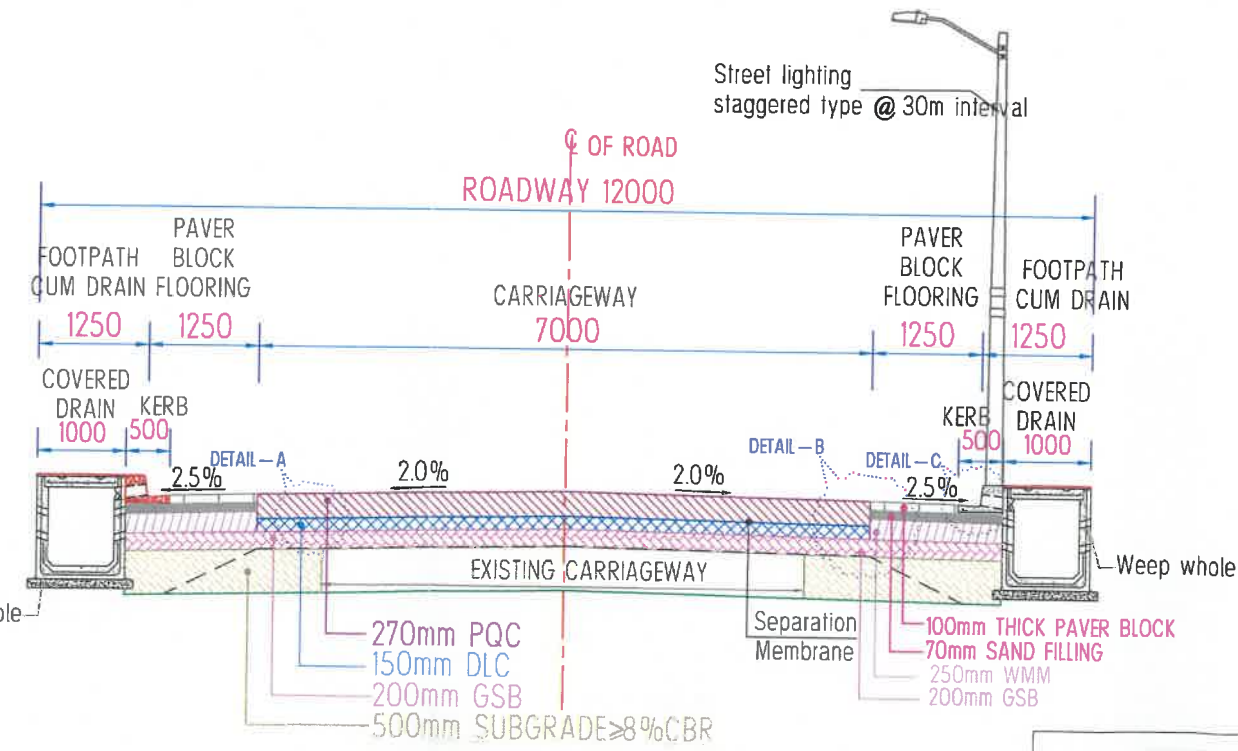
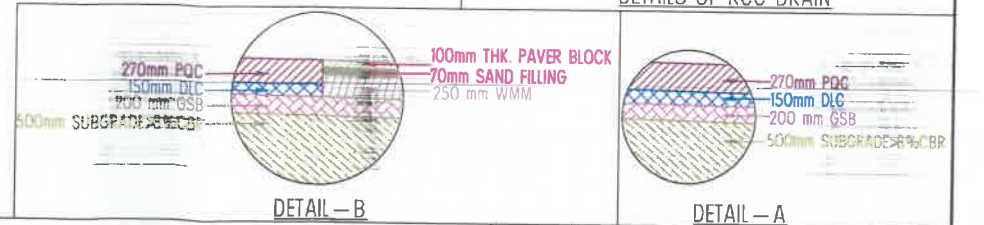
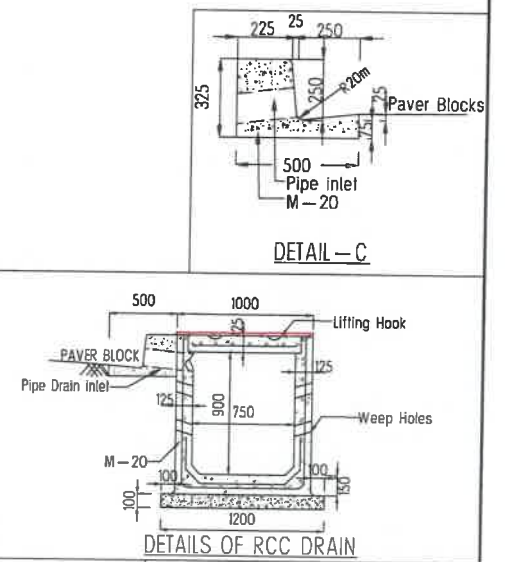


Fig. - 3b
 Concentric widening to 2-Lane with Paver Block in Built-up section (Built-up Section Plain/Rolling Terrain)



Design Chainage				Remark
S. N.	From	To	Length (km.)	
1	46.000	46.800	0.800	Sindhi railway
Total Length (Km)			0.800	

Note :- 1. Depth of RCC Drain Shall Vary as per Adjoining GL.
 2. All Dimension are in mm unless Otherwise Specified.
 3. The Paver Block width may varies as per available ROW

CLIENT -
 MINISTRY OF ROAD TRANSPORT AND HIGHWAY
 (N.H. DIVISION, PWD, MAHARASHTRA)

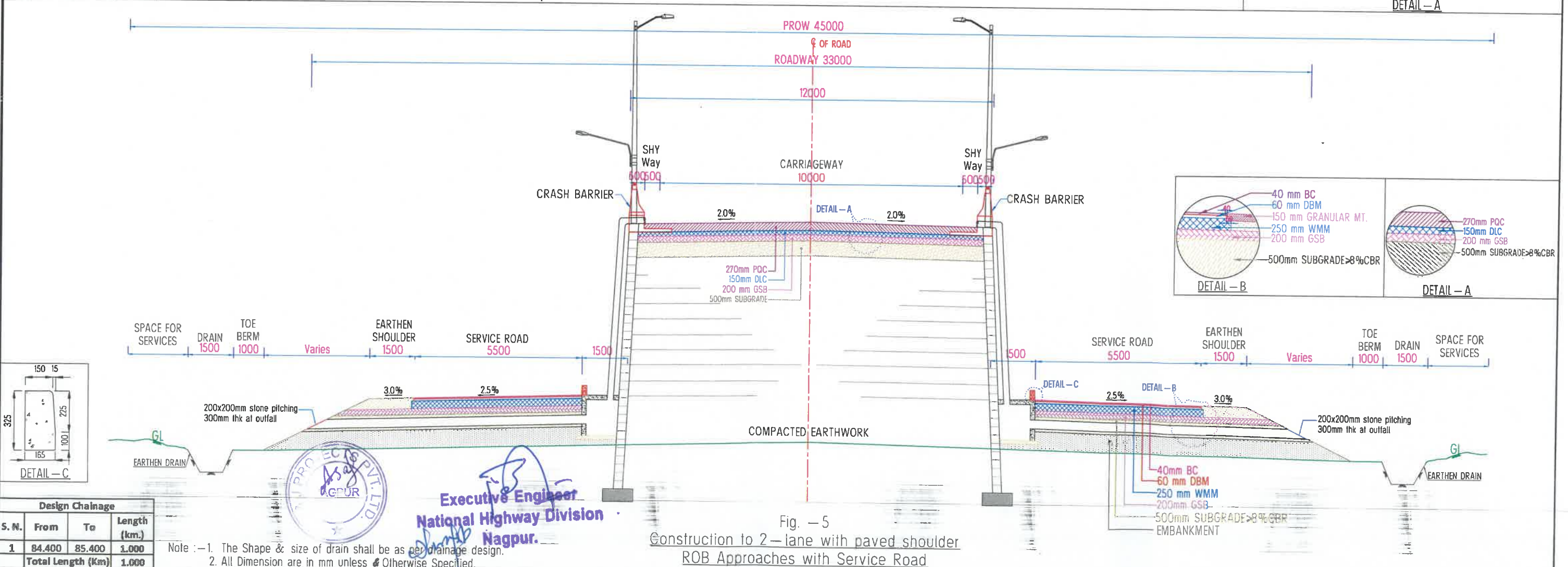
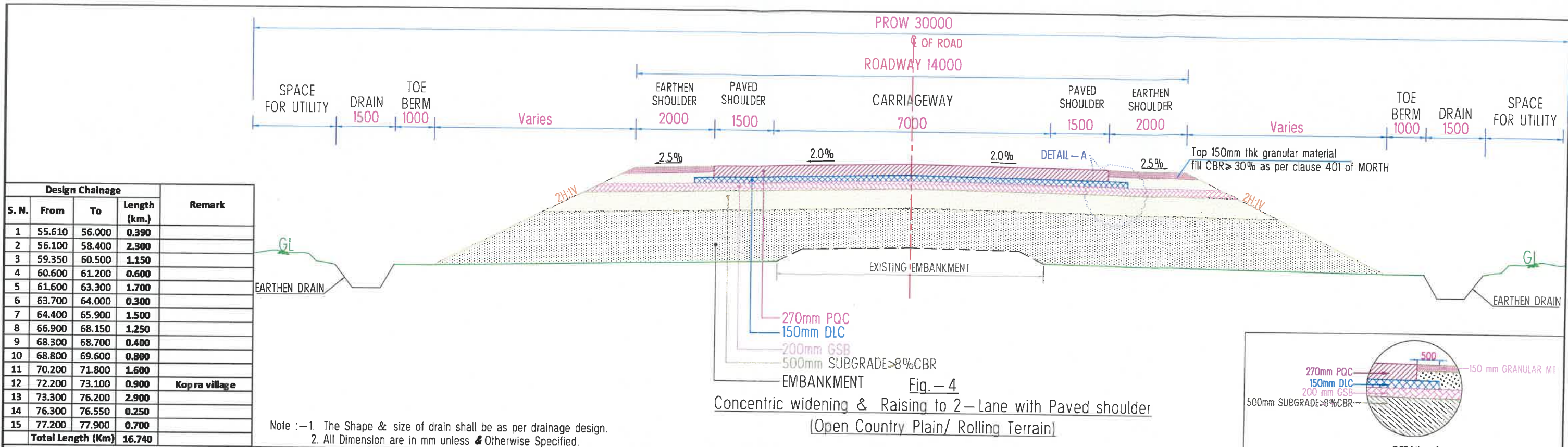
REV	DATE	DETAILS OF REVISION	DRAWN	CHECKED	APPROVED
RO	08-01-2017	DRAFT FEASIBILITY REPORT	A.A.K.	A.M.	S.B.M.

CONSULTANT -

 K & J Projects Pvt. Ltd.
 Shivam, 16 NIT Layout, Ravinagar,
 Nagpur-440033 Maharashtra, India.
 Ph : (0712)2556402, Fax : 2556403
 Email : contact@knjprojects.com

NAME OF WORK:
 Up-gradation of NH-3531 starting from Wadi connecting to Hingna T point Isasani-Mihan-Outer Ring Road-Gumgaon-Salaidhabha-Butibori MIDC-Takalghat-Khapri Moreshwar-Asola-Sindi Railway-Pavnar to Two Lane with Paved Shoulder configuration in section from Seldoh Junction (Existing km. 45+700 (NH-361) to Kandhali Junction (Existing km. 49+200 (NH-44) & From Kandhali Junction (Existing km. 49+200 (NH-44) connecting Sewagram to Pavnar Junction (Existing km. 68+000 (NH-361) [Design km.39.200 to km. 88.540] Design Length-49.340 Km in the State of Maharashtra on EPC Mode

DRG. NO. 00392/KJ/DFR/SKSP/PK-11/TPCS-2
 SCALE NTS
 TITLE: TYPICAL CROSS SECTION
 Fig. No. 3a & 3b



CLIENT - MINISTRY OF ROAD TRANSPORT AND HIGHWAY (N.H. DIVISION, PWD, MAHARASHTRA)		CONSULTANT - K & J Projects Pvt. Ltd. Shivam, 16 NIT Layout, Ravinagar, Nagpur-440033 Maharashtra, India. Ph : (0712)2556402, Fax : 2556403 Email : contact@knjprojects.com		NAME OF WORK: Up-gradation of NH-3531 starting from Wadi connecting to Hingna T point Isasani-Mihan-Outer Ring Road-Gumgaon-Salaidhabha-Butibori MIDC-Takalghat-Khapri Moreswar-Asola-Sindi Railway-Pavnar to Two Lane with Paved Shoulder configuration in section from Seldoh Junction (Existing km. 45+700 (NH-361) to Kandhali Junction (Existing km. 49+200 (NH-44) & From Kandhali Junction (Existing km. 49+200 (NH-44) connecting to Pavnar Junction (Existing km. 68+000 (NH-361) [Design km.39.200 to km. 88.540] Design Length- 49.340 Km in the State of Maharashtra on EPC Mode		DRG. NO. 00392/KJ/DFR/SKSP/PK-II/TYPCS-3 SCALE NTS TITLE: TYPICAL CROSS SECTION Fig. No. 4 & 5	
R.D. 08-01-2017 REV DATE	DRAFT FEASIBILITY REPORT DETAILS OF REVISION	A.A.K. DRAWN	A.M. CHECKED	S.B.M. APPROVED			