

निर्यात के लिए नहीं NOT FOR EXPORT

OPEN SERIES
MAP

No. G44W12

Scale 1:50,000

G44W7 (63L/7)	G44W11 (63L/11)	G44W15 (63L/15)
Sikkim MADHYA PRADESH G44W8 (63L/8)	G44W12 (63L/12)	Sonbhadra UTTAR PRADESH G44W16 (63L/16)
F44E5 (64L/5) Kumaon CHHATTISGARH	F44E9 (64L/9)	F44E13 (64L/13) Garhwal CHHATTISGARH

PLOTTER PRINT

भारतीय सर्वेक्षण विभाग

SURVEY OF INDIA

1st Edition 2011.

Price : Rs. 70/-

Rs 250

CONVENTIONAL SYMBOLS

Spans, highway, with or without bridge, with distance stone		
Roads, double, according to importance		
Roads, double carriageway, according to importance		
Unimproved road, Cart-track, Pack-track with pass, Foot-path		
Streams, with track in bed, undefined, Canal		
Dry, masonry or rock-filled, earthenwork, wavy		
River, dry with water channel, with island & rocks, Tidal river		
Swampy roads, Shal, Swamp, Reeds		
Wells lined, unlined, Tube-well, Spring, Tanks, perennial, dry		
Embankments, road or rail, Broken ground		
Railway, broad gauge, double, single with station, under construction		
Railways, other gauges, double, single with distance stone, do.		
Mineral line or tramway, Km. Cutting with stone, do.		
Contours with sub-features, Rills, Rolying, Slopes, Cliffs		
Scale features (1:25000) (Zoned) (Intermediate), (Zoned)(shifting)		
Towns & Villages, inhabited, deserted, Fort		
Hills, permanent, temporary, Tower, Ambulances		
Temple, Chhatra, Church, Mosque, Jains, Tombs, Forts		
Lighthouse, Lightship, Buoy, lighted, unlighted, Anchorage		
Mine, Vine or trails, Cross, Scale		
Palms, palms, other, Plantain, Cane, Bamboo, Other trees		
Areas cultivated, wooded, Surveyed tree		
Boundary, international		
state, demarcated, undemarcated		
district, sub-district, tribal or tribal, forest		
Boundary peaks, surveyed, uncolled		
Height, elevation, station, point, approximate		
Post, office, telegraph, railway, cable		
Post, office, Telegraph office, Overhead tank		
Rail, house or inspection building, Court, house, Police station		
Camping ground, Forest, reserved, protected		
Spaced names, administrative, locally or tribal		
Hospital, Dispensary, Veterinary Hospital / Dispensary		
Assemblies, Helped, Tourist site		
Power line, with poles surveyed, with poles unsurveyed		

REFERENCE

NH 75 National Highway No. 75.

NOTES :-

Heights are in metres and above Indian mean sea level.
Contours are approximate.
A relative height, e.g., $\frac{10}{100}$, represents the approximate height, in metres, between the top and bottom of a steep slope.
The kilometre scale numbers along roads, railways and canals are shown in slant type, e.g., $\frac{10}{5}$; whereas milestone numbers are shown in upright type, e.g., '10'.
The triangulated heights and contours in this sheet have not been adjusted to the spirit levelled bench marks and are not strictly in accordance with them.
Dry channels and unretained roads in the sheet are generally not motorable in the rainy season.
Wells are numerous throughout sheet and only the important ones have been shown.
Tanks shown dry in this sheet are usually contain water from July to December.

COMPILATION INDEX

A Modern Survey 1969-70. Updated for major details during 2006-07 and administrative boundaries updated during 2008-09.

Projection - UTM Datum - WGS 84

Magnetic Variation from True North about $\frac{1}{4}^{\circ}$ West in 2005.

1:50.000

1

20 METRE

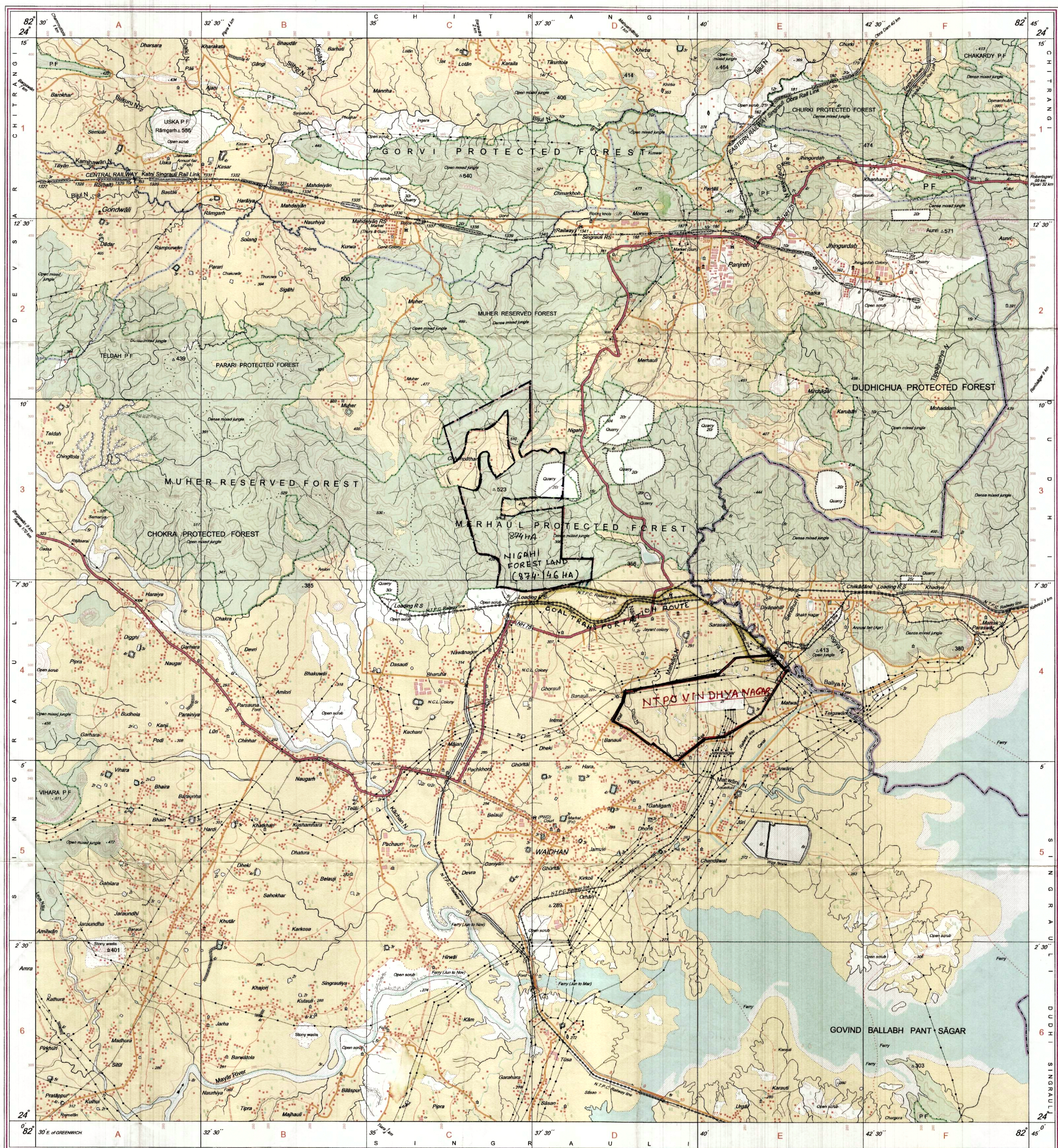
For further details about this map, please contact

Director
East Uttar Pradesh Geo-Spatial Data Centre
Survey of India
Block, 2nd Floor, PICUP Bhawan, Gomti Nagar, Lucknow.

WEBSITE - www.surveeofindia.gov.in

Reproduction in whole or part by any means is prohibited without the written permission of Survey of India, the National Mapping Agency.

GOVERNMENT OF INDIA COPYRIGHT, 2011.



REG. No. -WPG D/11 (First Uttar Pradesh GDC-1:50,000)

भारत के महामहोदय, स्वर्ण सुब्बा राव, बी०ई०, के निदेशन में प्रकाशित,
Published under the direction of Swarna Subba Rao, B.E., Surveyor General of India,
Survey of India, Hattibarkala Estate, Post Box No.37, Dehra Dun-248001 (Uttarakhand)
Department of Science & Technology, Government of India.

SUBJECT: TOPOSHEET INDICATING BOUNDARY OF FOREST LAND PROPOSED COAL TRANSPORTATION ROUTE FOR RENEWAL OF FOREST LAND (874/146 HA) AT NIGAH I PROJECT, NCL.

MANAGER(SURVEY)
NIGAH)

STAFF OFFICER(MINING)
NIGAH

GENERAL MANAGER
NIGAH