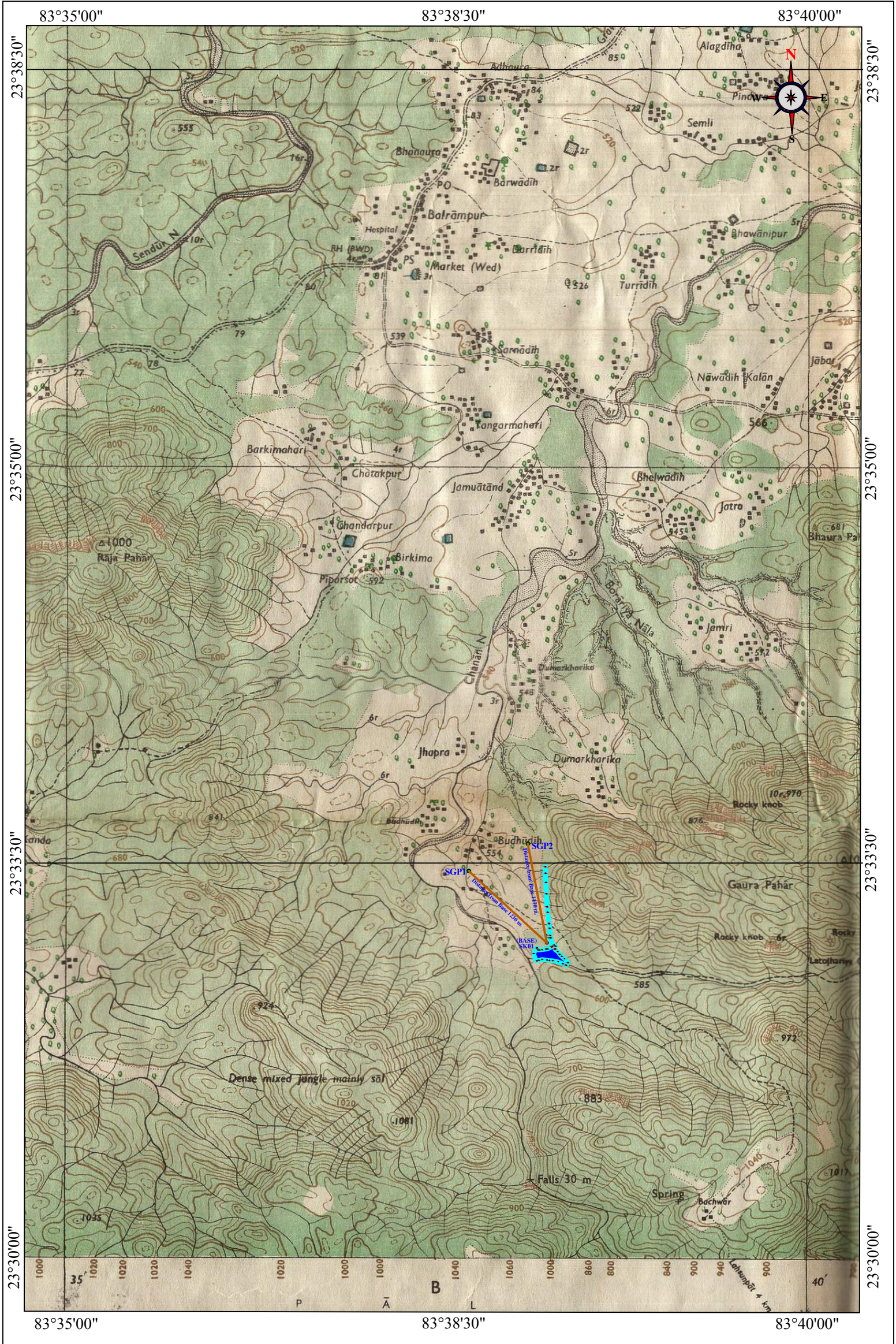


MAP OF FIXED BOUNDARY POINTS BY DGPS SURVEY FOR SAKETWA TANK PROJECT
DISTRICT - BALRAMPUR

CO-ORDINATES OF THE FIXED BOUNDARY POINT FOR
SAKETWA TANK PROJECT
IN DEGREE, MINUTE, SECOND



DGPS POINT	LONGITUDE	LATITUDE	ELEVATION
SK01 (BASE)	83° 38' 07.61779"E	23° 32' 01.31512"N	541.268
SW01	83° 38' 03.30049"E	23° 31' 54.78516"N	531.709
SW02	83° 38' 3.63122"E	23° 31' 54.84214"N	532.458
SW03	83° 38' 4.41678"E	23° 31' 55.045266"N	533.746
SW04	83° 38' 05.66706"E	23° 31' 55.36332"N	533.392
SW05	83° 38' 7.63086"E	23° 31' 55.09561"N	533.409
SW06	83° 38' 8.57763"E	23° 31' 54.96242"N	532.108
SW07	83° 38' 09.98167"E	23° 31' 54.91540"N	529.544
SW08	83° 38' 12.12780"E	23° 31' 54.52675"N	529.841
SW09	83° 38' 13.93340"E	23° 31' 53.79281"N	530.777
SW10	83° 38' 15.05042"E	23° 31' 53.29921"N	530.271
SW11	83° 38' 15.30241"E	23° 31' 53.17681"N	529.291
SW12	83° 38' 15.96868"E	23° 31' 54.13153"N	527.517
SW13	83° 38' 14.63920"E	23° 31' 55.59946"N	530.073
SW14	83° 38' 13.53436"E	23° 31' 56.44221"N	529.735
SW15	83° 38' 12.70592"E	23° 31' 57.18530"N	530.416
SW16	83° 38' 11.92033"E	23° 31' 58.17440"N	526.998
SW17	83° 38' 10.88413"E	23° 31' 58.95089"N	530.745
SW18	83° 38' 10.86248"E	23° 31' 59.27516"N	527.119
SW19	83° 38' 11.06673"E	23° 32' 00.14558"N	530.615
SW20	83° 38' 10.54463"E	23° 32' 00.54878"N	531.125
SW21	83° 38' 09.44651"E	23° 31' 59.90318"N	532.055
SW22	83° 38' 08.01109"E	23° 31' 59.17500"N	532.225
SW23	83° 38' 07.28748"E	23° 31' 59.10337"N	531.582
SW24	83° 38' 05.71561"E	23° 31' 58.90878"N	532.443
SW25	83° 38' 04.61143"E	23° 31' 58.75263"N	532.35
SW26	83° 38' 04.05345"E	23° 31' 58.83186"N	533.126
SW27	83° 38' 03.77271"E	23° 31' 59.55329"N	535.653
SW28	83° 38' 03.59905"E	23° 31' 59.49306"N	536.977
SW29	83° 38' 02.35329"E	23° 31' 57.50137"N	526.56
SW30	83° 38' 9.74761"E	23° 32' 0.08163"N	530.783
SW31	83° 38' 09.67562"E	23° 32' 00.03841"N	531.024
SW32	83° 38' 9.16082"E	23° 32' 3.14881"N	535.72
SW33	83° 38' 09.21301"E	23° 32' 03.34813"N	535.485
SW34	83° 38' 8.75041"E	23° 32' 6.69841"N	533.051
SW35	83° 38' 8.81884"E	23° 32' 6.70922"N	533.141
SW36	83° 38' 8.53441"E	23° 32' 8.45884"N	540.737
SW37	83° 38' 8.60282"E	23° 32' 8.45522"N	537.842
SW38	83° 38' 8.54521"E	23° 32' 8.35442"N	537.972
SW39	83° 38' 8.03044"E	23° 32' 12.48421"N	531.487
SW40	83° 38' 8.09881"E	23° 32' 12.48321"N	533.669
SW41	83° 38' 7.77841"E	23° 32' 14.47082"N	531.615
SW42	83° 38' 7.86123"E	23° 32' 14.47082"N	530.495
SW43	83° 38' 7.69921"E	23° 32' 14.51042"N	531.315
SW44	83° 38' 7.91162"E	23° 32' 14.52121"N	529.254
SW45	83° 38' 7.49041"E	23° 32' 19.28043"N	529.286
SW46	83° 38' 7.69923"E	23° 32' 19.28041"N	529.348
SW47	83° 38' 7.29962"E	23° 32' 23.34842"N	529.035
SW48	83° 38' 7.50844"E	23° 32' 23.37213"N	530.216
SW49	83° 38' 7.14842"E	23° 32' 26.72164"N	524.775
SW50	83° 38' 7.36081"E	23° 32' 26.72881"N	525.965
SW51	83° 38' 7.04042"E	23° 32' 29.07962"N	531.542
SW52	83° 38' 7.26124"E	23° 32' 29.09041"N	530.485
SW53	83° 38' 8.80081"E	23° 32' 4.04883"N	535.892
SW54	83° 38' 8.56682"E	23° 32' 3.23881"N	533.6
SW55	83° 38' 7.48321"E	23° 32' 3.40821"N	532.204
SW56	83° 38' 7.55884"E	23° 32' 4.29362"N	530.665
SW57	83° 38' 8.97214"E	23° 32' 3.17761"N	534.681
SW58	83° 38' 9.05641"E	23° 32' 3.99841"N	535.804
GROUND CONTROL POINTS			
SGP1	83° 37' 35.68455"E	23° 32' 28.38086"N	529.123
SGP2	83° 38' 00.07874"E	23° 32' 38.49963"N	528.325

MAP NO. - 2

Roads, metalled: according to importance: distance stone unmetalled: do. do. bridge	20
Cart-track: Pack-track and pass. Foot path with bridge	
Bridges: with piers: without. Causeway. Ford or Ferry.	
Streams: with track in bed: undefined. Canal.	
Dams: masonry or rock-filled: earthwork. Weir.	
River banks: shelving: steep: 3 to 6 metres: over 6 metres.	
dry with water channel: with island & rocks: tidal river.	
Submerged rocks. Shoal. Swamp. Reeds.	
Wells: lined: unlined: Tube-well. Spring: Tanks: perennial dry	
Embankments: road or rail: tank. Broken ground.	
Railways: broad gauge: double: single with station: under constr.	
other gauges: do. : do with distance stone: do.	
Mineral line or tramway: Telegraph line. Cutting with tunnel.	
Contours: with sub-features: Rocky slopes. Cliffs.	
Sand features: (hills) sand-hills and dunes (surveyed) (shifting dunes).	

Towns or Villages: inhabited: deserted: Fort.	
Huts: permanent: temporary. Tower. Antiquities.	
Temple. Chhatra: Church. Mosque. Idgh. Tomb. Graves.	
Lighthouse: Lightship. Buoy: lighted: unlighted: Anchorage.	
Mine. Vine on trellis. Grass. Scrub.	
Palms: palmyra: other. Plantain: Conifer: Bamboo: Other trees.	
Boundary: international.	
state: demarcated: undemarcated.	
district: subdiv. tahsil or taluk: forest.	
Boundary pillars: surveyed: unlocated: village: trijunction.	
Height: triangulated: station: point: approximate.	
Bench-mark: geodetic: tertiary: canal.	
Post office: Telegraph office: Combined office. Police station.	
Bungalows: dak or travellers: inspection. Rest-house.	
Circuit house: Camping ground: forest: reserved: protected.	
Spaced names: administrative: locality or tribal.	

INDEX	
	Base Point
	Ground Control Point
	Distance between Base & GCP
	Fixed Boundary Points
	Surveyed Area

DGPS SURVEY MAP OF SAKETWA TANK PROJECT IN TOPOSHEET MAP DIST.- BALRAMPUR (C.G.) Applicant		Land - Government Forest Land
 Executive Engineer W/R Division No.-2, Ramanujan Distt. Balrampur-Ramanujan (C.G.)		Forest Division- East Surguja Forest Division Forest Range- Balrampur Forest Compartment no.- P525 Part of Toposheet no.-64M/10
Office of the Executive Engineer, Water Resources Division No.-2, Ramanujan District - Balrampur, Chhattisgarh		Surveyed Area - 4.67 Hect. Date of Survey - 27-02-2016 to 28-02-2016
Surveyed by :- Vinod Markam Manager (Geology)		 Alok Verma Director (Operation)
For, Siddharth Geo Consultants (INDIA) Pvt. Ltd., 621/3 1st Floor, Ramkund, Samta Colony, Behind Life Worth Hospital, Raipur (C.G.)		 SIDDHARTH GEO CONSULTANTS (INDIA) PVT. LTD. SERVICE FOR EXCELLENCE ISO 9001:2008