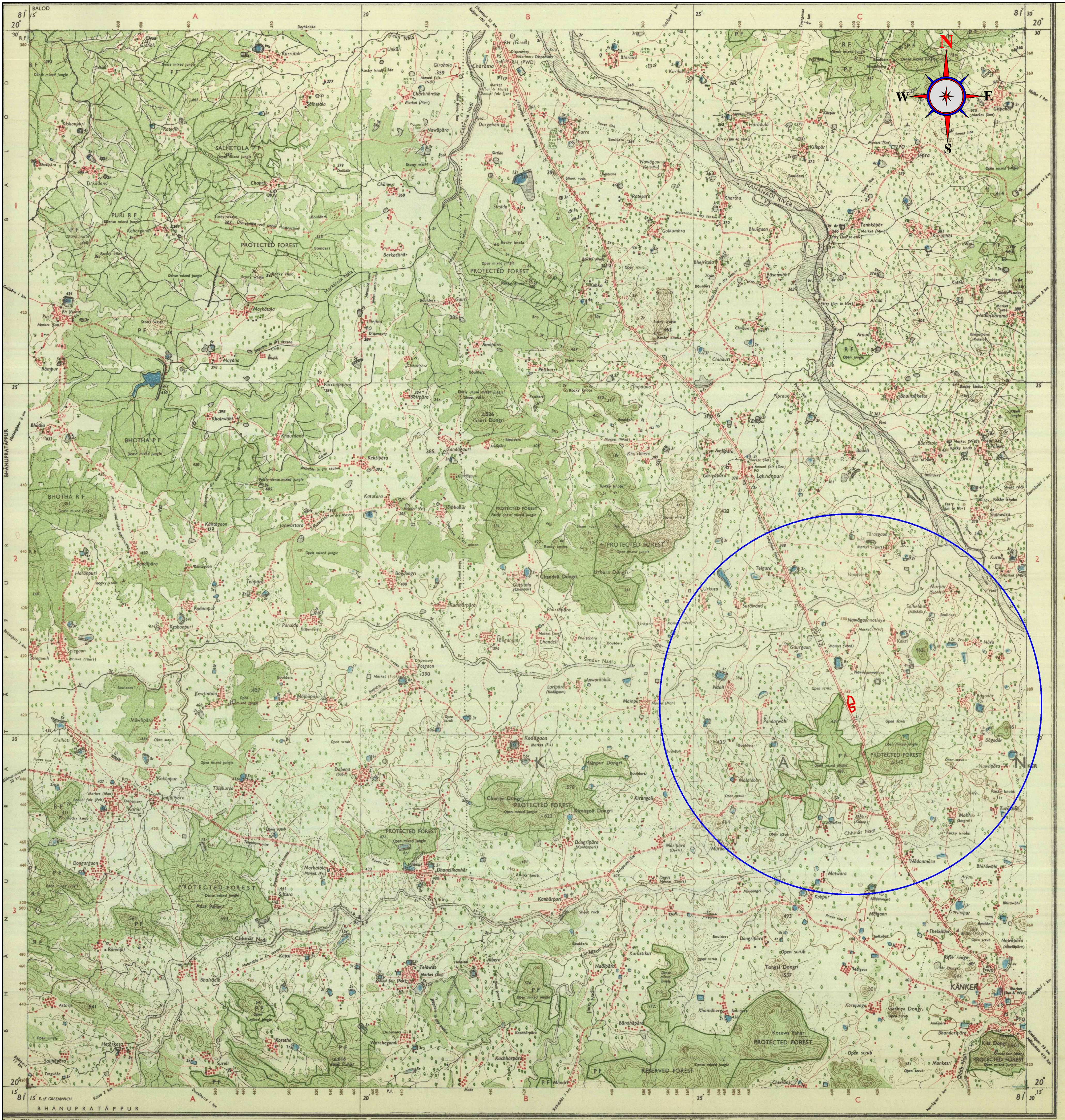


MAP OF THE GOVT. POLY TECHNIC COLLEGE BUILDING CONSTRUCTION IN NATHIYA NAWAGAON BY DGPS SURVEYED AREA IN TOPOSHEET NO. 64H/7



CO-ORDINATES OF THE FIXED BOUNDARY POINT BY DGPS FOR THE GOVT. POLY TECHNIC COLLEGE BUILDING CONSTRUCTION IN DEGREE,MINUTE,SECOND

POINT NAME	LONGITUDE	LATITUDE	ELEVATION
BF00	81° 27' 13.75223"E	20° 20' 30.91643"N	330
k1	81° 27' 13.76941"E	20° 20' 31.79276"N	330
k2	81° 27' 15.01357"E	20° 20' 26.63198"N	330
k3	81° 27' 15.54121"E	20° 20' 24.34565"N	329
k4	81° 27' 14.95206"E	20° 20' 25.55293"N	328
k5	81° 27' 14.48056"E	20° 20' 26.70777"N	326
k6	81° 27' 14.17411"E	20° 20' 27.93380"N	327
k7	81° 27' 13.97788"E	20° 20' 28.84022"N	327
k8	81° 27' 13.83905"E	20° 20' 29.47430"N	327
k9	81° 27' 13.73288"E	20° 20' 30.48318"N	328
k10	81° 27' 13.88298"E	20° 20' 33.66353"N	327
k11	81° 27' 13.69766"E	20° 20' 35.60721"N	328
k12	81° 27' 15.21012"E	20° 20' 35.13543"N	330
k13	81° 27' 16.95286"E	20° 20' 34.64395"N	330
k14	81° 27' 17.99102"E	20° 20' 33.30027"N	331
k15	81° 27' 18.78341"E	20° 20' 32.28754"N	329
k16	81° 27' 19.16834"E	20° 20' 30.76326"N	328
k17	81° 27' 19.70267"E	20° 20' 28.97346"N	328
k18	81° 27' 17.49735"E	20° 20' 28.63298"N	328
k19	81° 27' 14.55807"E	20° 20' 27.89901"N	330
k20	81° 27' 15.36902"E	20° 20' 25.66610"N	331
k21	81° 27' 17.35526"E	20° 20' 26.12488"N	330
k22	81° 27' 19.38957"E	20° 20' 26.56862"N	331
k23	81° 27' 19.69920"E	20° 20' 26.55964"N	330
k24	81° 27' 20.23280"E	20° 20' 23.56675"N	331
k25	81° 27' 18.89281"E	20° 20' 22.95242"N	329
k26	81° 27' 16.88763"E	20° 20' 21.91560"N	330
k27	81° 27' 16.31523"E	20° 20' 22.57082"N	331
k28	81° 27' 15.97324"E	20° 20' 23.30161"N	331

S. NO.	VILLAGE/ BLOCK	TYPE OF LAND	FOREST DIVISION/RANGE /VILLAGE	FOREST COMPARTMENT NO. / KHASRA NO.	SURVEYED AREA (IN HECT.)
1.	Nathiya Nawagaon	Govt. Forest Land (OA)	Kanker/ Kanker	OA 346	4.309
TOTAL				1	4.309

SCALE-1:50,000

050010001500200025003000350040005000

INDEX

5000m Radius

DGPS Surveyed Area

TOPOSHEET MAP OF THE GOVT. POLY TECHNIC COLLEGE BUILDING CONSTRUCTION BY DGPS SURVEY AREA DISTRICT - KANKER

Applicant

Principal Government Polytechnic College Kanker District - Kanker, Chhattisgarh Pin Code -494334

Land - Government Forest Land Forest Division- Kanker Forest Range- Kanker Government Compartment no.- OA346

Surveyed Area- 4.309 Hect.

Date of Survey -03-11-2015 to 05-11-2015

Surveyed by :-

For, M/S ARROW Engineers B-6 Ganesh Encalave Near Petrol Pump Koni Bilaspur Chhattisgarh Pin :- 495009 PH:- 9826726527