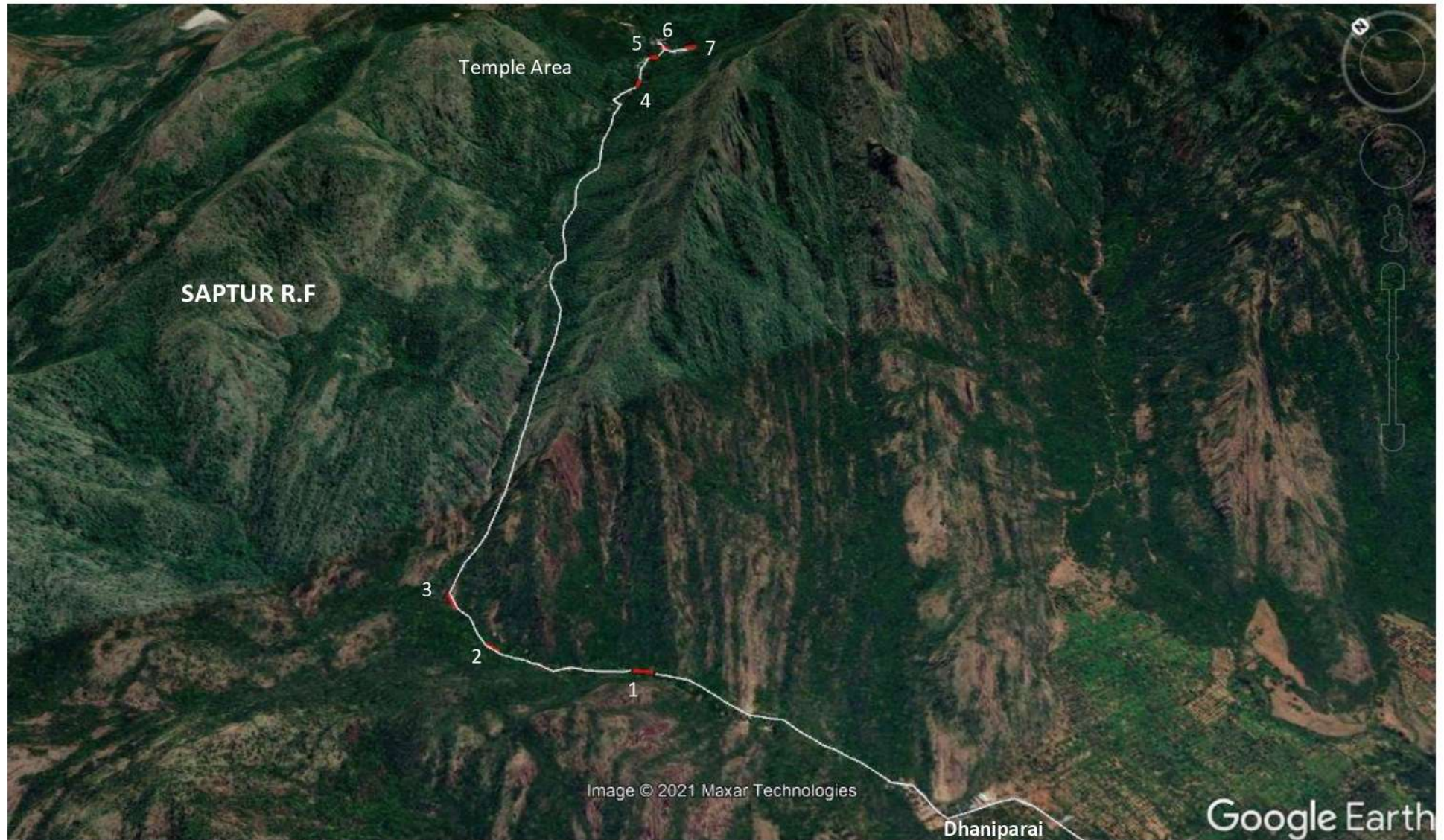


Google location map of proposed formation of steel bridges in 7 locations across river stream from Dhaniparai to Sundaramahalingam Temple located in Saptur R.F. in Srivilliputhur Wildlife Division in Madurai District



1. Mangani Odai; 2. Ezhumbu Odai; 3. Sangilikaruppu Odai; 4. Palamarathukaruppnasamy Odai; 5. Vellaiparai Odai; 6. Odai near Arch; 7. Sundaramahalingam Temple Odai

— Proposed Steel Bridge location

[Signature] 21.08.2021
EXECUTIVE OFFICER,
ARULMIGU SUNDARAMAHALINGAM SWAMY
THIRUKOIL, SADURAGIP