

Untitled Map

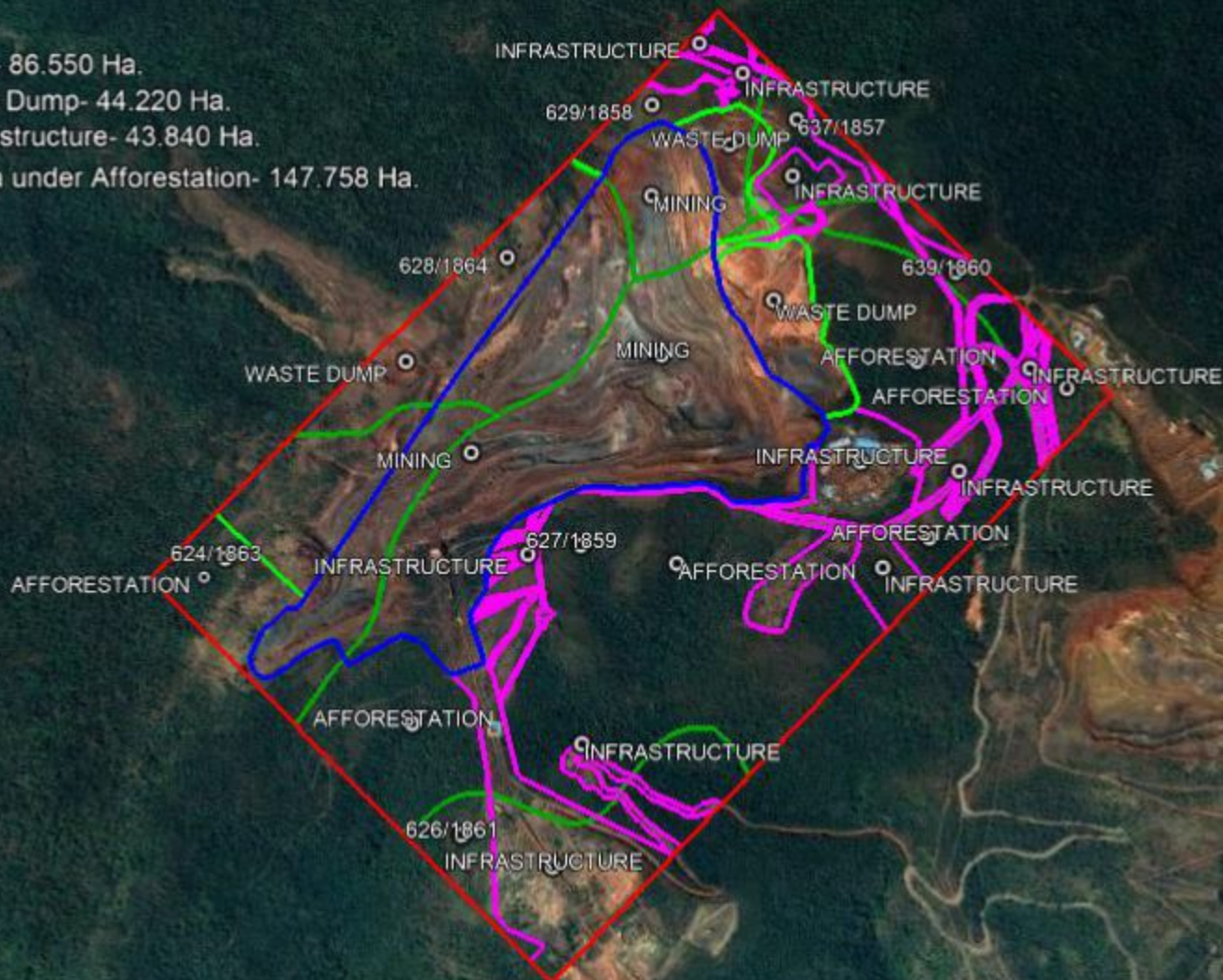
Write a description for your map.

EXISTING LANDUSE PATTERN- 322.368 Ha.

1. Mining- 86.550 Ha.
2. Waste Dump- 44.220 Ha.
3. Infrastructure- 43.840 Ha.
4. Area under Afforestation- 147.758 Ha.

Legend

- [Untitled]
- Feature 1
- INFRA



Google Earth

Image © 2018 CNES / Airbus

© 2018 Google

1 km