



No. G43K4

Scale 1:50,000

G43J15 (45N/15)	G43K3 (54B/3)	G43K7 (54B/7)
Tonk RAJASTHAN G43J16 (45N/16)	G43K4 (54B/4)	Sawai Madhopur RAJASTHAN G43K8 (54B/8)
G43P13 (45O/13)	G43Q1 (54C/1)	G43Q5 (54C/5)
Bundi RAJASTHAN		

1 Jajpur, RAJASTHAN.  
2 Dausa, RAJASTHAN.  
3 Kota, RAJASTHAN.

भारतीय सर्वेक्षण विभाग SURVEY OF INDIA

1st Edition 2014.

Price: ₹ 84/-

#### CONVENTIONAL SYMBOLS

Express highway with toll; with bridges; with distance stone	...
Roads, metalled; according to importance	...
Roads, double cartageways; according to importance	...
Unmetalled road. Cart-track. Pack-track with pass. Foot-path	...
Stream: with track in bed; underfed. Canal	...
Dam: masonry or rock-filled; earthwork. Wall	...
River: dry with water channel; with island & rocks. Tidal river	...
Submerged rocks. Shoal. Swamp. Reeds	...
Wells: lined; unlined. Tube-well. Spring. Tank. Perennial; dry	...
Embankment: road or rail; tanks. Broken ground	...
Railways, broad gauge: double; single with station; under constr.	...
Railways, other gauges: double; single with distance stone; do.	...
Mineral line or tramway. Kite. Cutting with tunnel	...
Contours with sub-features. Rocky slopes. Cliffs	...
Sand features: (1) flat. (2) sand-hills (permanent). (3) dunes (shifting)	...
Towns or Villages: inhabited; deserted. Fort	...
Huts: permanent; temporary. Tower. Antiquities	...
Temple. Chhatra. Church. Mosque. Idgah. Tomb. Grave	...
Lighthouse. Lightship. Buoy: lighted; unlighted. Anchorage	...
Mine: Vins on traffic. Grass. Scrub	...
Palms: palm; other. Plantain. Conifer. Bamboo. Other trees	...
Areas: cultivated; wooded. Surveyed tree	...
Boundary, international	...
States: demarcated; undemarcated	...
district; sub-division; taluk or taluk; forest	...
Boundary pillars: surveyed; unlocated; village junction	...
Height, triangulated; station; point; approximate	...
Barometer; geodetic; tertiary; canal	...
Post office. Overhead tank	...
Rest house or inspection bungalow. Circuit house. Police station	...
Camping ground. Forest: reserved; protected	...
Speed names: administrative; locality or tribal	...
Hospital. Dispensary. Veterinary: Hospital / Dispensary	...
Aerodrome. Helipad. Tourist site	...
Power line: with pylons surveyed; with poles unsurveyed	...

#### NOTES:-

Heights are in metres and above Indian mean sea level.  
Contours are approximate.  
A relative height, e.g., 100, represents the approximate height, in metres, between the top and bottom of a steep slope.  
Tanks, shown dry, in this area usually contain water from July to December.  
Cart-tracks are motorable in dry season.  
Cart-tracks along canals are motorable. Permission to use these is required from the Irrigation authorities.  
Canal distance stones along the United Provinces Main Canal are 1000 feet apart and every fifth stone is shown.  
Digpi is a tank which is used for collection of water.

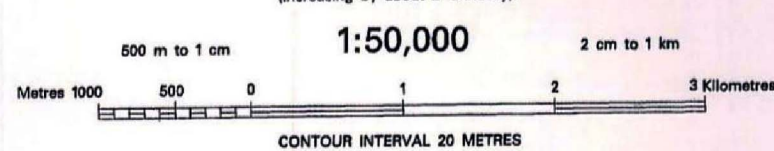
#### COMPILATION INDEX

A. Surveyed 1970-71. Updated for major details during 2000-08.



Projection - UTM Datum - WGS 84

Magnetic Variation from True North about 1/2° East in 2010.  
(Increasing by about 2' annually).



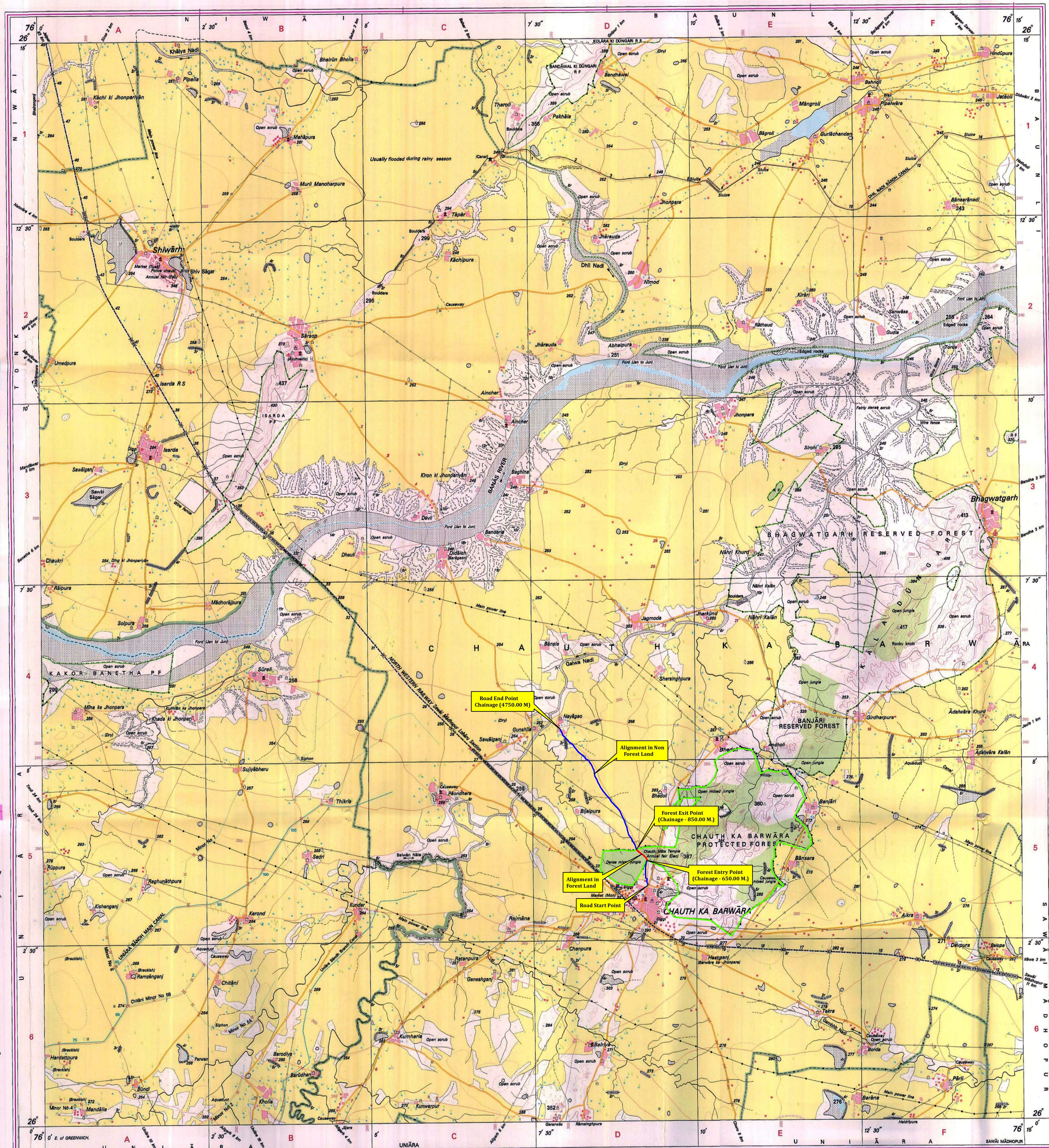
#### Legend

- Alignment in Forest land
- Alignment in Non Forest Land
- Forest Boundary

WEBSITE - www.surveyofindia.gov.in

Reproduction in whole or part by any means is prohibited without the written permission of Survey of India, the National Mapping Agency.

GOVERNMENT OF INDIA COPYRIGHT, 2014.



REG. No. - WPG 0/4 (Rajasthan) GDO-150,000-

(Signature)  
(रामेश्वर सोनी)  
अधिकांश अभियन्ता  
म. वि. वि. खण्ड 112 स. क.

भारत के नक्काशांकन के स्वर्ण युग, के विवेक में प्रकाशित,  
Published under the direction of Dr. Swarna Subba Rao, Surveyor General of India,  
Survey of India, Hattibarkala Estate, Post Box No. 37, Dehra Dun - 248001 (Uttarakhand),  
Department of Science & Technology, Government of India.

PRINTED AT THE WESTERN PRINTING GROUP OF SURVEY OF INDIA.