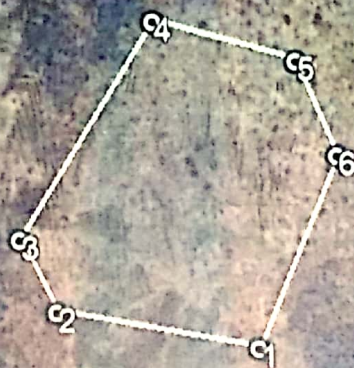


Proposed 10Ha. LI Plantation in Compt.No.257, RF:Hajipur, Beat:Konapur,
Section:Rampur, Range:Banswada during the year 2023-24.

Legend

Surveyed-11Ha.

Sl. No.	Latitude	Longitude
1	18.41326	77.95232
2	18.41369	77.94991
3	18.41451	77.94947
4	18.41698	77.95104
5	18.41654	77.95275
6	18.41546	77.95325



Google Earth

Image © 2022 Maxar Technologies

District Forest Officer,
Ramareddy

700 m



District Forest Officer
Ramareddy

Nithin



OPEN SERIES
MAP

No. E44G3

Scale 1:50,000

E44H4	E44G2	E44G8
E44H5	E44G3	E44G7
E44H6	E44G4	E44G9

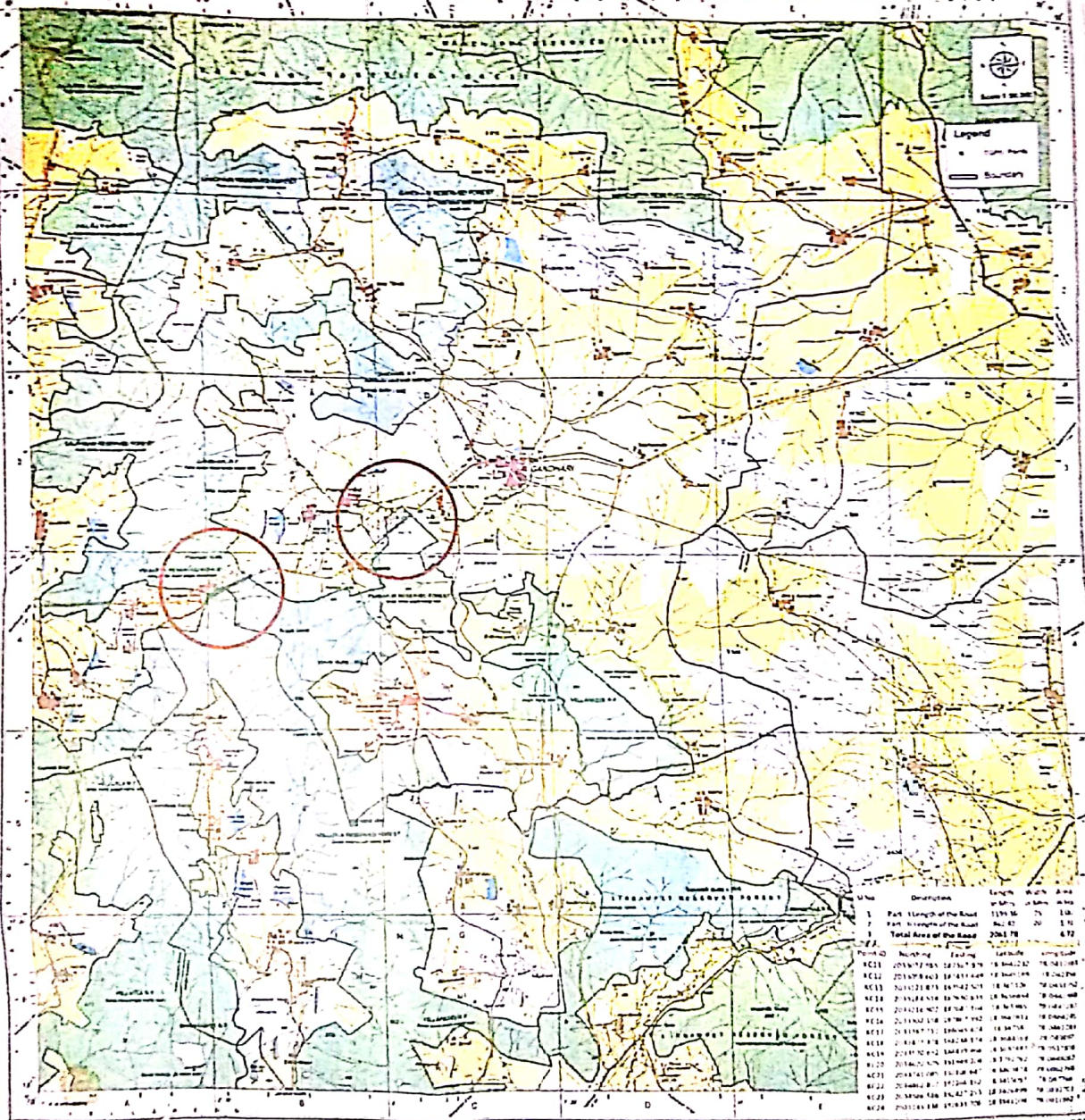
Survey of India

CONVENTIONAL SYMBOLS	
1. Boundaries of States and Districts	1. Rivers and Canals
2. Towns and Villages	2. Forests
3. Railways	3. Cultivated Land
4. Roads	4. Waterfalls
5. Bridges	5. Mountains
6. Temples and Religious Buildings	6. Lakes and Reservoirs
7. Forts and Military Establishments	7. Quarries
8. Mines and Mineral Wells	8. Dams and Barrages
9. Public Works	9. Other Buildings
10. Other Features	

CONVENTIONAL SYMBOLS	
1. Boundaries of States and Districts	1. Rivers and Canals
2. Towns and Villages	2. Forests
3. Railways	3. Cultivated Land
4. Roads	4. Waterfalls
5. Bridges	5. Mountains
6. Temples and Religious Buildings	6. Lakes and Reservoirs
7. Forts and Military Establishments	7. Quarries
8. Mines and Mineral Wells	8. Dams and Barrages
9. Public Works	9. Other Buildings
10. Other Features	

Copyright © 1970 by Survey of India
All rights reserved.
No part of this publication may be reproduced without the written permission of the Survey of India, the National Mapping Agency.

Map Showing Improvements to Banawada Upplwal Road (17058 km to 18278 km) & (22180 km to 23042 km) in Kamareddy District, Beas - Rampoor Gadda, Comp - No. 771, Beas - Pothungal Kalan, Comp No. 2718, Beas-Channapoor, Comp - No. 777, in Gandhari Range, Banawada Division, In favour of Executive Engineer, J.L.B. Division, Kamareddy Dist.



Part	Length of the Road	Area	Remarks
1	1199.36	75.130	
2	102.87	1.31	
3	2083.78	6.72	
Total			

District Forest Officer
Kamareddy

Executive Engineer

Map showing CA DFL - Banswada to Uppalawai Road
Compartment No.257, Hajipur Block; Banswada Range and Division (Surveyed area 10.9468 ha out of which suitable land of 8.8758 ha will be planted)

