

**LiDAR / DGPS Survey report for Forest Diversion of
proposed OFC Cable routes in Manendragarh Division with
Total Route Length 320.32 (Segment-I 161.540 Km. &
Segment-II 158.78 Km.) under (CG) SKY Project**

APPLICATION SUBMITTED BY:

Jio Digital Fibre Private Ltd.



LIDAR / DGPS SURVEY AND GIS MAPPING DONE BY:

Contents

1 INTRODUCTION AND BACKGROUND	3
1.1 Background	3
1.2 Proposed Routes	4
1.3 Work Location	6
1.4 Objective	7
2 COPE OF WORK	8
3 DELIVERABLES	9
4 TECHNICAL APPROACH (BRIEF DESCRIPTION).....	10
4.1 GCP Establishment for LiDAR (DGPS) Survey:	10
4.2 Mobile LiDAR (DGPS) data collection:	11
4.3 DRS / GIS Map Creation Using LiDAR data:	11
4.4 Demarcation of Proposed OFC on LiDAR data:	12
4.5 Geo-referencing of Maps:.....	14
4.6 Creation of Vector Data for Forest Diversion:	15
4.7 Generation of Map and Survey Reports for Forest Diversion:.....	16
5 DGPS SURVEY RESULTS	17
5.1 Forest Area Statement (Annexure-1):.....	Error! Bookmark not defined.
5.2 DGPS Surveyed coordinates of Forest Patches (Annexure-2):	21
5.3 Geo-Referenced Maps of the Proposed Route (Annexure-3):	Error! Bookmark not defined.9
5.4 DGPS Maps of the Proposed Route (Annexure-4):	Error! Bookmark not defined.

1 Introduction and Background

1.1 Background

The Chhattisgarh Infotech Promotion Society (CHiPS) has selected an implementation partner (i.e. Jio Digital Fibre Private Ltd.) for Sanchar Kranti Yojna (CG-SKY) project. The Government has taken a leap forward to design the Sanchar Kranti Yojna (CG-SKY) for providing a solution to improve the telecom connectivity in the state of Chhattisgarh by incentivizing the telecom operators to install Cell-Sites. In order to create commercial viability for Telecom operators to invest in the network infrastructure the Government is distributing approx. 50 lakh Smartphones. The primary objective is to ensure the mobile network connectivity is extended to all villages in state of Chhattisgarh with a population of 1000 or above as per the 2011 census and to further strengthen network coverage in all towns and villages, which already have coverage by either erecting new telecom towers or upgradation of existing towers. Based on preliminary assessment, besides the urban areas, approximately 14,000 villages will come under network connectivity and approximately 50,80,000 Smartphones will be distributed under the CG-SKY scheme. The scheme would cover all villages and towns in the State of Chhattisgarh, except those villages having less than 1,000 population and not having connectivity. It may be noted that villages with less than 1,000 population, but having connectivity shall be considered for the CG-SKY.

1.2 Proposed Routes

Following image (Fig-1.1) shows the proposed routes in Manendragarh Division

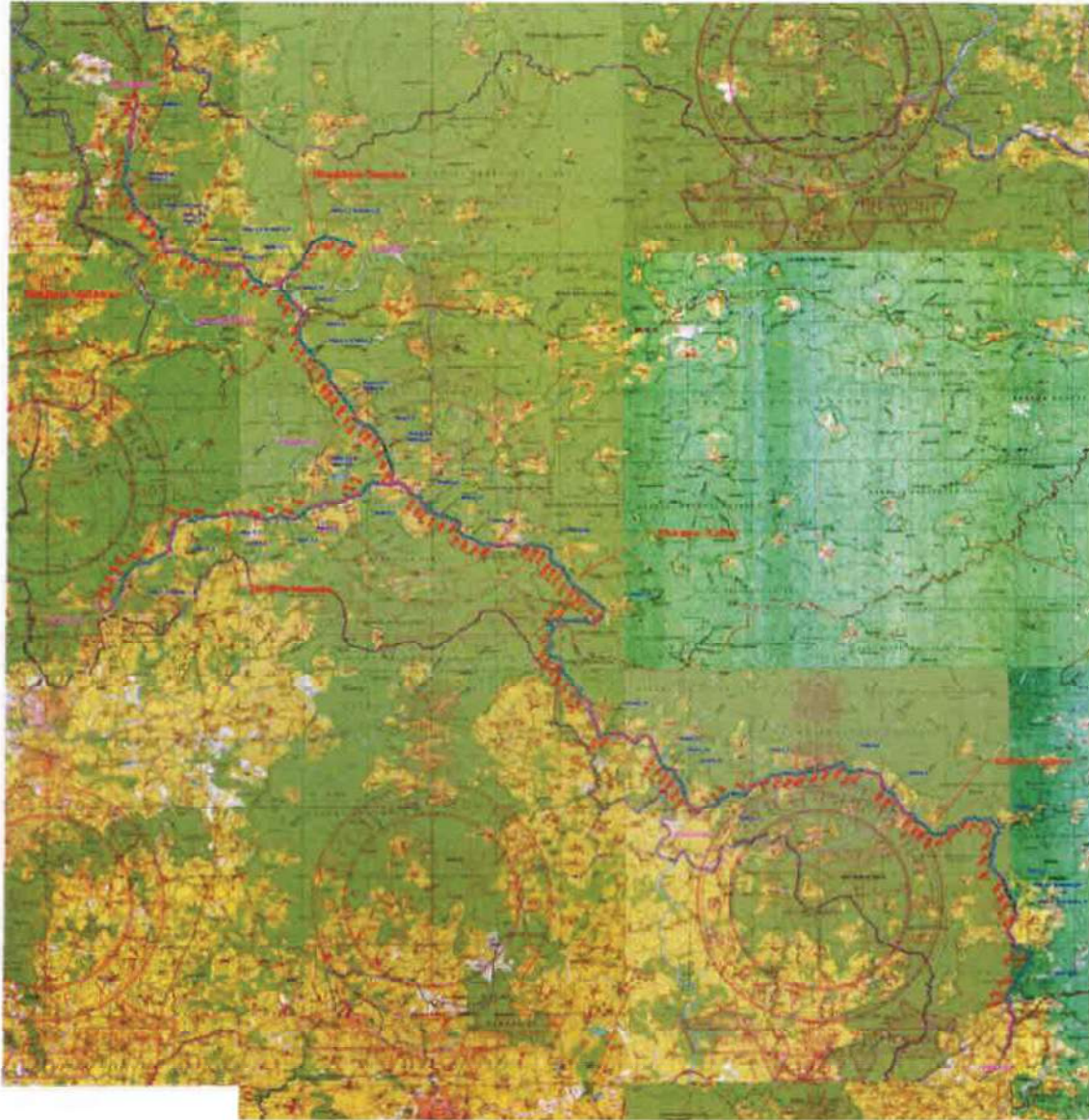


Fig-1.1: OFC Cable Proposed Routes on Online Map in Manendragarh Division.

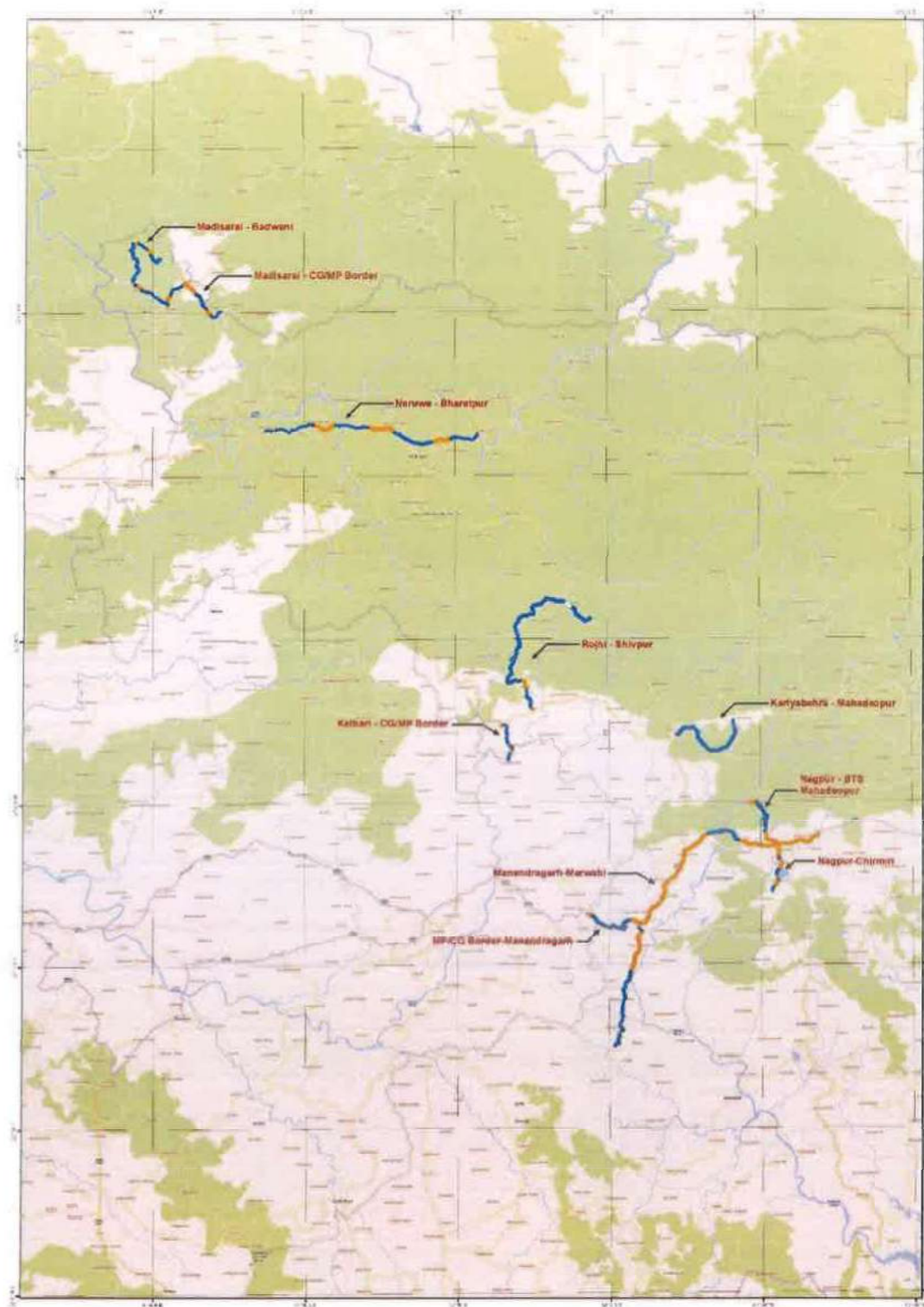


Fig-1.2: OFC Cable Proposed Routes on Online Map in Manendragarh Division.

1.3 Work Location

The proposed OFC Cable route in Manendragarh Forest Division (Tehsils covered along the route is: Bharatpur & Manendragarh District: Korea the Division length is approx. 158.78 km. The survey site passes through forest ranges – Janakpur, Kuwarpur, Bhairasi, Kelhari, Biharpur, Manendragarh & Khadgarva of Manendragarh forest division. The OFC Cable route is covered under Survey of India Toposheets 64E9, 64E10, 64E11, 64E13, 64E14, 64E15, 64E16, 64I2, 64I3, 64I4, 64I5, 64I6, 64I7, & 64I8 on RF 1:50000.



Fig-2: OFC Cable Proposed Routes on Satellite Imagery in Manendragarh Division.

1.4 Objective

As per directives of Ministry of Environment & Forests (MoEF) dated 8th July 2011; all applications for Forest Diversion, under Forest Conservation Act, 1980 must be accompanied with Geo-referenced shape file, showing the boundary of the proposed area (both soft copy and hard copy maps), prepared using Differential GPS (DGPS) and the same should be uploaded to MoEF website along with the online application.

2 cope of Work

1. Establishment of one base station with 72 Hours observation and secondary control points at every 10km along the proposed route.
2. DGPS Survey for collection of ground coordinates along the OFC Cable trench at every 50m interval and/or at every turn/bend along the proposed trench. The DGPS data is collected at forest patches only.
3. Data processing and Interpretation
 - a. Geo-referencing of SOI Toposheet (1:50000), Forest Stock map (1:15000, if available) and satellite imagery
 - b. Creation of OFC Cable trench boundary vector map using the DGPS Surveyed data
 - c. Superimposition of cable route layer on Geo-referenced forest maps, SOI Toposheet and Satellite imagery.
 - d. Computation of Forest area proposed for diversion. It includes Reserved/Protected Forest & Revenue Forest.
 - e. Preparation of Geo-referenced forest map at 1:15000 scale, and SOI Toposheet at 1:50000 scale.
 - f. Preparation of DGPS survey report along with soft copy of maps in shapefile format and kml file
4. Printing of report and Geo-referenced maps and Technical compliance.

3 Deliverables

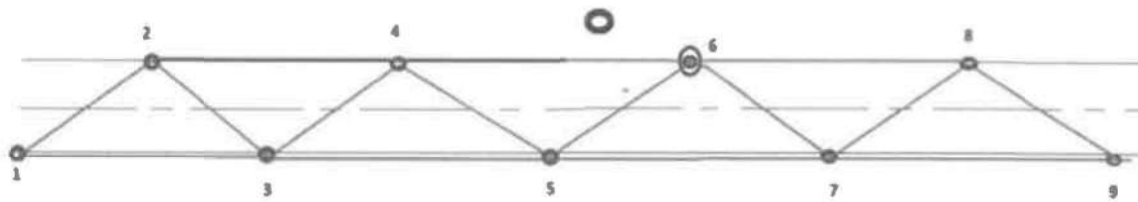
The deliverables envisaged for the assignment are described below

1. Post processed DGPS observations data as well as raw data in RINEX format.
2. DGPS Reports - Base line & network adjustment report for the primary and Secondary Control Points.
3. Geo-referenced SOI maps & forest block maps based on DGPS observations – Hard and Soft Copy (SHP and KML formats).
4. Proposed Forest Diversion area statement as per DGPS Survey
5. DGPS Survey and mapping report

4 Technical Approach (Brief Description)

4.1 GCP Establishment for LiDAR (DGPS) Survey:

Example of defined Triangular Network GCP method.



● ⇨ Primary Control Point (PCP)

○ ⇨ Secondary Control Point (SCP)

○ ⇨ Temporary Bench Mark (TBM)

Primary Control Point: 72 Hours of DGPS observation for Post Processing the PCP data with IGS stations.

Secondary Control Point: 2 - 4 Hours of DGPS observation for Post Processing the SCP data with PCP Data.

Temporary Bench Mark: 1 Hour of DGPS observation for improving the spatial accuracy of the LiDAR point cloud data.

4.2 Mobile LiDAR (DGPS) data collection:

DGPS based Mobile LiDAR data was collected along with 360 degree panoramic view of the OFC route corridor (25 meter on each side along the center of the road).



Mobile LiDAR Van

4.3 DRS / GIS Map Creation Using LiDAR data:

All the features along the route are captured using LiDAR data and Panoramic Imagery to create the DRS / GIS Map.



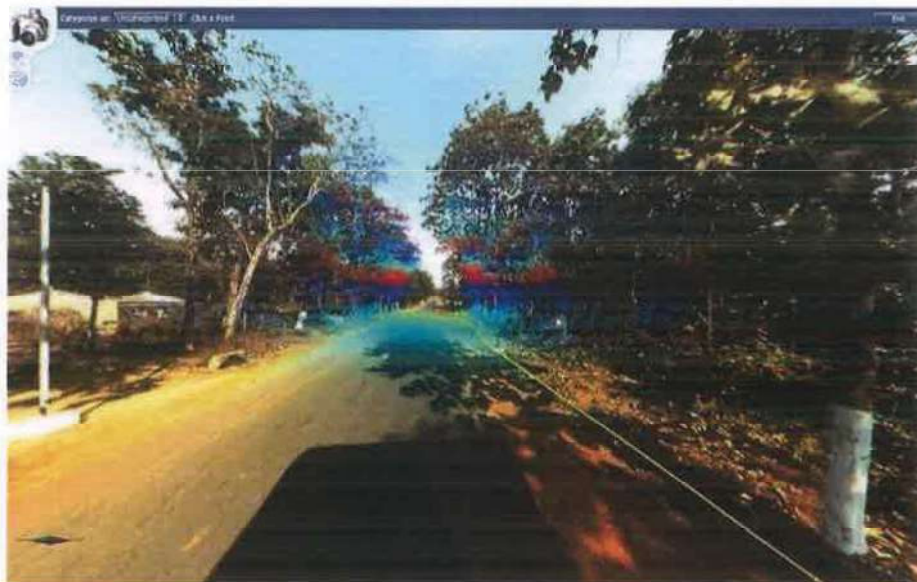
Feature Extraction on LiDAR



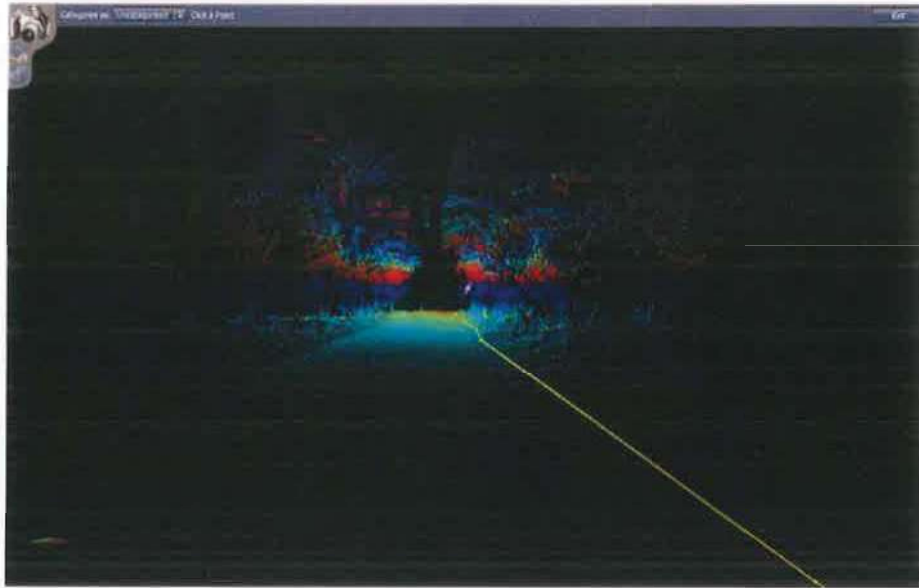
Final DRS / GIS Map

4.4 Demarcation of Proposed OFC on LiDAR data:

Proposed OFC line is demarcated based on the feasibility of trenching to be done on ground by referring the LiDAR data with the Panoramic imagery.



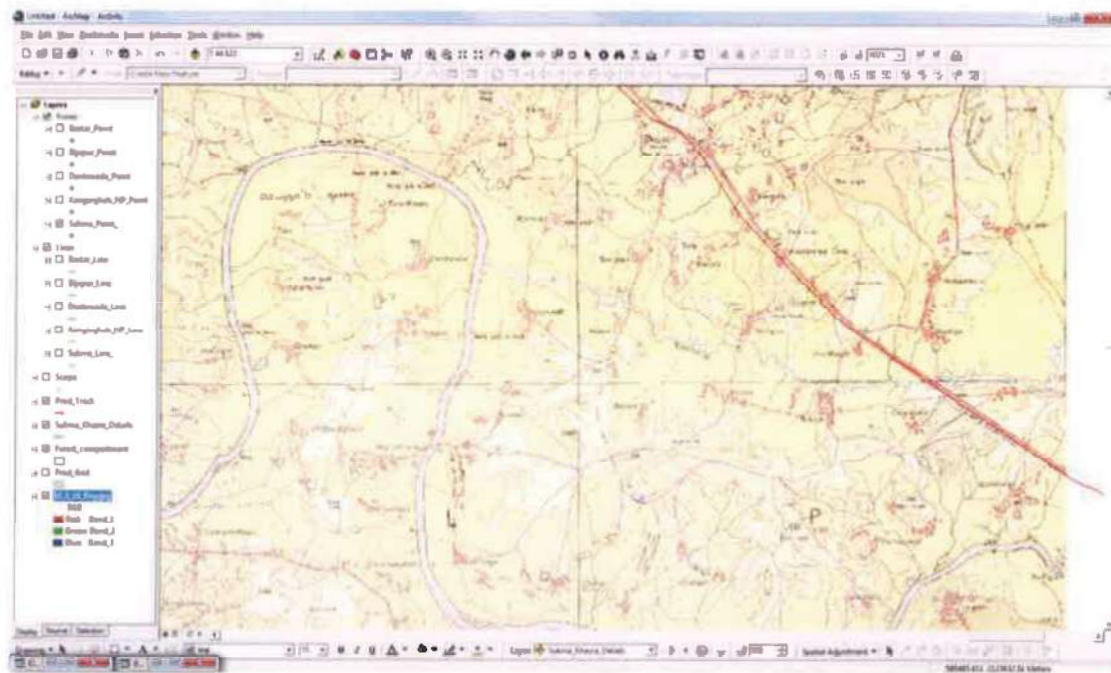
Proposed OFC Line on LiDAR Data (with Panoramic Imagery)



Proposed OFC Line on LiDAR Data only

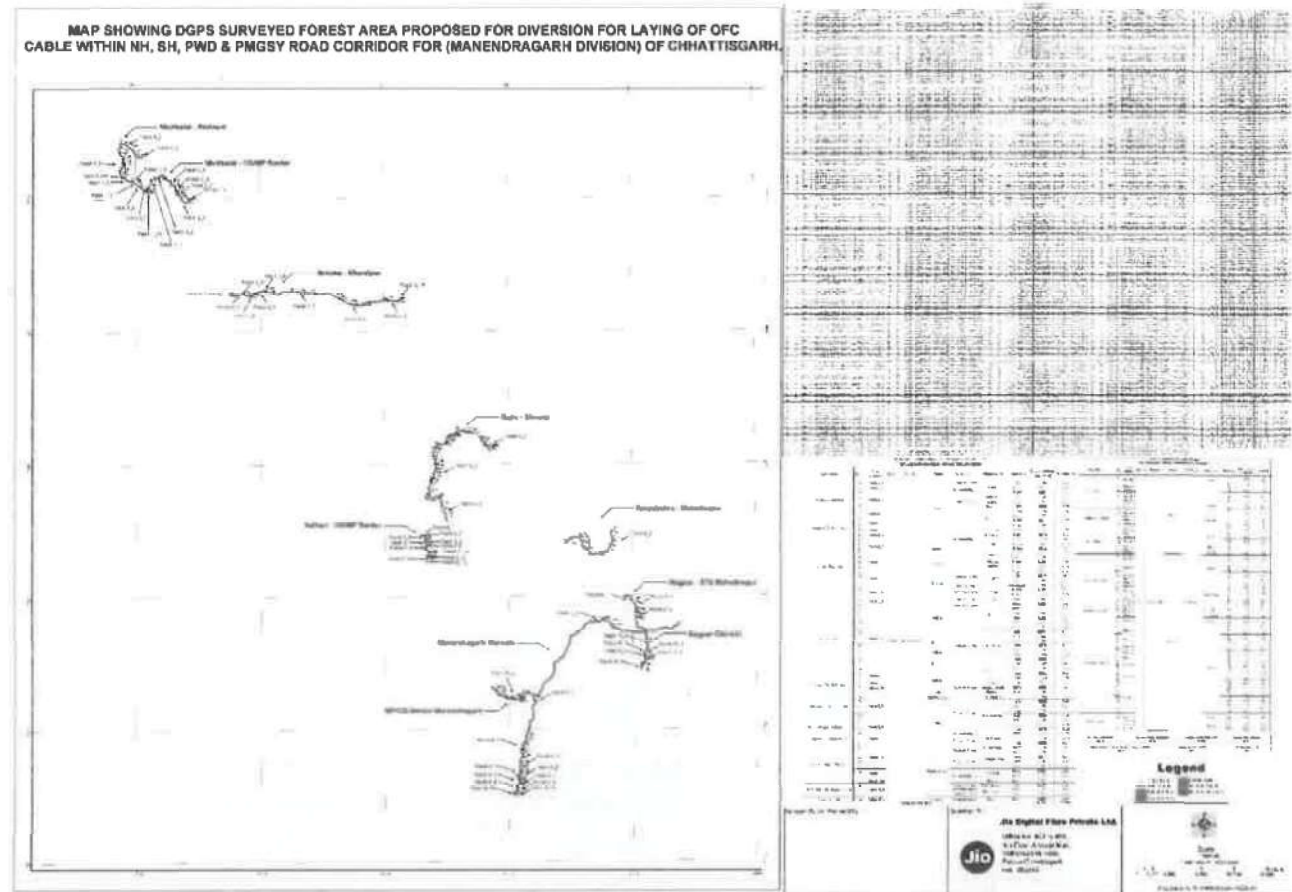
4.5 Geo-referencing of Maps:

Geo-referencing of Revenue Village Maps, SOI Toposheets and Forest Maps are to be done. SOI Toposheets and Forest Maps would be geo-referenced based on the coordinates provided on the maps whereas Revenue Village Maps would be geo-referenced with the help of GCPs collected (at least 5 GCPs for a village having Government Forest Land are to be collected)



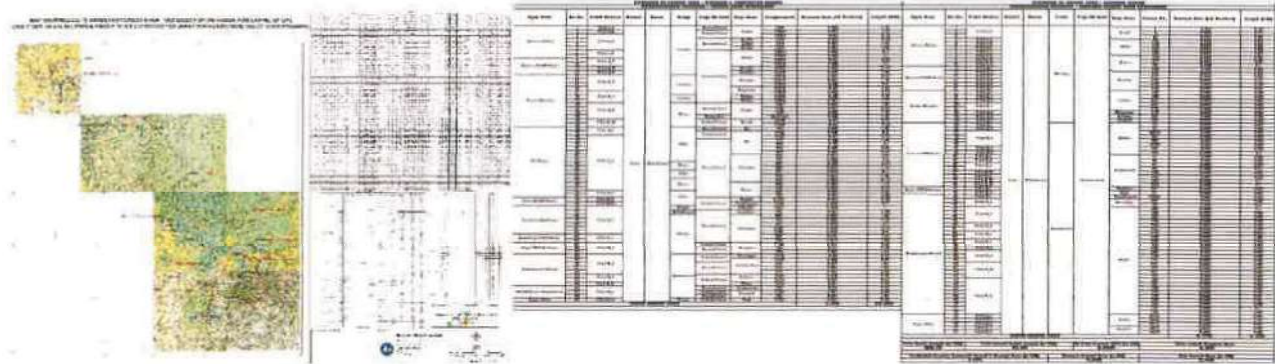
4.6 Creation of Vector Data for Forest Diversion:

Different Layers such as Polygon of Reserved/Protected Forest Patch, Centerline of Forest Trench, Non-Forest Trench line, Polygons showing Revenue Forest patches etc. are to be created using the Geo-referenced maps and the provided information by the forest department.



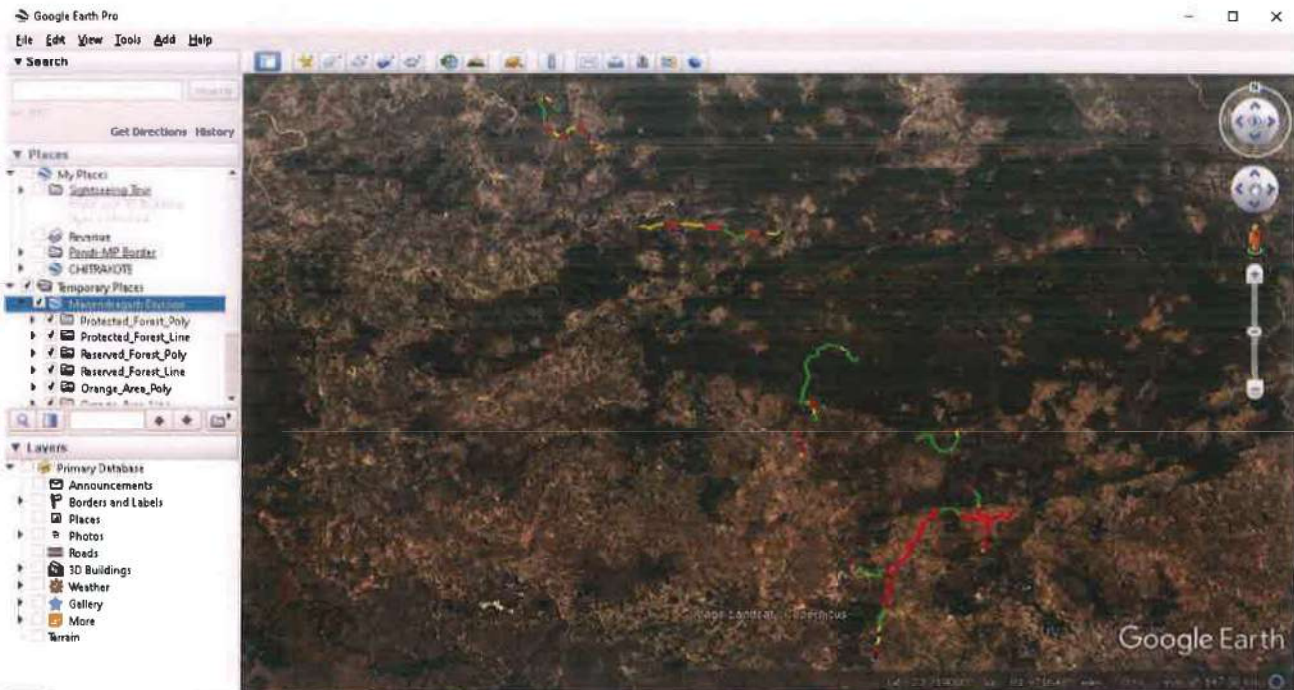
4.7 Generation of Map and Survey Reports for Forest Diversion:

A map is created by overlaying the created vector data for the forest patches on the Geo-referenced SOI Toposheets / Forest Maps. The reports are generated for DGPS Points (with Lat/long) placed at the regular intervals of 150m on the proposed OFC route in the forest area. Another report is generated having area calculation for the proposed trench area in different type of Forest Lands. Samples of these are as below.



Geo-referenced Map

Forest Area Statement



KML File

5 DGPS Survey Results

The total route length is approx. 320.32 km (Segment-I 161.540 Km & Segment-II 158.780 Ha. Respectively) and the proposed forest area for diversion is 9.406 Ha. (Segment-I 4.907 Ha & Segment-II 4.499 Ha.) Forest Area Statement Report is in Annexure-1, and DGPS coordinates and forest patch boundary coordinates is in Annexure-2. The geo-referenced maps are in Annexure -3, and DGPS Maps of the Proposed Route (Annexure-4)

Segment	Route Length (in KM)	Revenue Forest land (in Hectares) (A)	Forest Land (in Hectares) (B)	Total Forest land (in Hectares) (A+B)	Non-Forest land (in Hectares)
I	161.540	0.269	4.638	4.907	3.17
II	158.780	0.388	4.111	4.499	3.440
Total				9.406	6.610



SCHEDULE OF FOREST LAND-RESERVE & PROTECTED FOREST

MANENDRAGARH DIVISION (SEGMENT-I)-FOREST AREA STATEMENT

SPAN NAME	SR. NO.	PATCH NUMBER	DIVISION	RANGE	VILLAGE NAME	COMPARTMENT	TYPE OF LAND	DIVERSION AREA (in HA)	LENGTH (KM)
Bharatpur-Madisarai	1	Patch-1_2	Manendragarh	Janakpur	Markhohi	P1356	Protected Forest	0.083	1.660
	2					P1355		0.089	1.780
	3				Chidaula	P1354		0.021	0.420
	4					P1360		0.007	0.140
	5	Patch-1_8			Larkoda	P1339		0.045	0.900
	6	Patch-1_9				P1335		0.034	0.680
	7	Patch-1_10			Deogarh	P1329		0.094	1.880
	8	Patch-1_11		Kuwarpur	Janakpur	P1266			0.062
Bharathpur-Semriha	9	Patch- 2_1		Janakpur	Barhori	P1330		0.045	0.900
	10	Patch- 2_7 & Patch- 2_8			Semriha	P1331		0.122	2.440
Bharatpur-Kelhari	11	Patch-3_2 & Patch-3_4		Kuwarpur	Janakpur	P1267		0.026	0.520
	12	Patch-3_4			Masaura	P1270		0.019	0.380
	13					P1274		0.031	0.620
	14				Janakpur	1236	Reserved Forest	0.081	1.620
	15					P1273		0.098	1.960
	16	Patch-3_7		Bahrasi	Seri	P1268	Protected Forest	0.070	1.400
	17	Patch-3_8				P1080		0.143	2.860
	18	Patch-3_10			Bahrasi	P1081		0.066	1.320
	19	Patch-3_11				P1074	0.030	0.600	
	20	Patch-3_12			Umarwah	1056	Reserved Forest	0.008	0.160
	21					P1056		0.080	1.600
	22				Khetauli	P1084		0.110	2.200
	23	Patch-3_12 & Patch-3_13			Umarwah	P1087	Protected Forest	0.07	1.400
	24	Patch-3_13				P1088		0.075	1.500
	25	Patch-3_14 & Patch-3_15			Chutki	P1035		0.194	3.880
	26	Patch-3_15		Kelhari	Kunak	P984	Reserved Forest	0.069	1.380
	27					986		0.052	1.040
	28				Kunuk	985		0.048	0.960
	29			Bahrasi	Barail	P1038	Protected Forest	0.093	1.860
	30					P1036		0.102	2.040
	31				Seri	P1037		0.057	1.140
	32			Kelhari	Tilokhan	982	Reserved Forest	0.074	1.480
	33				Dhanhar	983		0.090	1.800
	34					1011		0.053	1.060
	35			Bahrasi	Barail	1010	Reserved Forest	0.060	1.200
	36					1009		0.074	1.480
	37	Patch-3_16						0.040	0.800
	38	Patch-3_17		Kelhari	Ramanujnagar	P956	Protected Forest	0.040	0.800
	39	Patch-3_18 & Patch-3_19			Charwahi	P952		0.103	2.060
	40	Patch-4_1			Shripur	P949		Reserved Forest	0.105
	41				Kelhari	942	Protected Forest	0.066	1.320
	42					P947	0.100	2.000	
	43	Patch-4_2			Ghodbandha	932	Reserved Forest	0.022	0.440
	44					933A		0.040	0.800
	45					933B		0.040	0.800
	46				Rojhi	940		0.113	2.260
Kelhari-Pipariya	47	Patch-4_3			Kachhod	P924	Protected Forest	0.024	0.480
	48	Patch-4_4			Pahadhanswahi	927	Reserved Forest	0.036	0.720
	49	Patch-4_5		Manendragarh	Kachhod	743		0.099	1.980
	50			Kelhari	Kariyabehra	920		0.073	1.460
	51			Manendragarh	Biharpur	732		0.072	1.440
	52			Biharpur	Kariyabehra	830		0.072	1.440
	53					735		0.108	2.160
	54					736		0.07	1.400
	55					733		0.041	0.820
	56	Patch-4_7		Manendragarh	Musara	734		0.002	0.040
	57	Patch-4_16			Ghutara	731		0.086	1.720
	58					723		0.158	3.160
	59					722		0.016	0.320
	60				Patch- 5_1	Bahrasi	Tikaritola	P1080	Protected Forest
61	Patch- 5_2	Bahrasi		P1081	0.062		1.240		
62	Patch- 5_3	Kashitola		P1079	0.075		1.500		
63	Patch- 5_4	Lakhantola		P1076	0.045		0.900		

MANENDRAGARH DIVISION (SEGMENT-I)-FOREST AREA STATEMENT

TOTAL FOREST AREA

MANENDRAGARH DIVISION (SEGMENT-I)-REVENUE FOREST AREA STATEMENT

TOTAL REVENUE AREA

Total Route Length (In KM)	Total Forest Patch Length (In KM)	OFC Cable Trench Width (In KM)	Total Forest Diversion Area (In HA)
161.540	98.140	0.0005	4.907
Summary Of Forest And Non Forest Area			
Protected Forest, Reserved Forest & Orange Area (In HA)	Revenue Forest Area (In HA)	Non Forest Area (In HA)	
4.638	0.269	3.170	


वन परिक्षेत्राधिकारी
वन परिक्षेत्र कोल्हारी (सा.)


वन परिक्षेत्राधिकारी
वन परिक्षेत्र बिहारपुर


वन परिक्षेत्राधिकारी
मनेन्द्रगढ़





वन परिक्षेत्राधिकारी
जनकपुर


वन परिक्षेत्राधिकारी
कुंवारपुर


वन परिक्षेत्र अधिकारी
बहरासी


उपवनमंडलाधिकारी
जनकपुर, उपवनमंडल


उपवनमंडलाधिकारी
कोल्हारी, उपवनमंडल


उपवनमंडलाधिकारी
मनेन्द्रगढ़


वनमंडलाधिकारी
मनेन्द्रगढ़

SCHEDULE OF FOREST LAND - RESERVE & PROTECTED FOREST										
MANENDRAGARH DIVISION - FOREST AREA STATEMENT										
Span Name	Sr.No.	Patch Number	District	Division	Range	Type Of Land	Village Name	Compartment	Diversion Area (In Hectare)	Length (KM)
Madisarai-Badwani	1	Patch-1_1	Koriya	Manendragarh	Janakpur	Reserved Forest	Badwahi	1369	0.088	1.76
Madisarai-Badwani	2	Patch-1_2	Koriya	Manendragarh	Janakpur	Protected Forest	Badwahi	P1384	0.057	1.14
Madisarai-Badwani	3	Patch-1_3	Koriya	Manendragarh	Janakpur	Protected Forest	Badwahi	P1384	0.021	0.42
Madisarai-Badwani	4	Patch-1_3	Koriya	Manendragarh	Janakpur	Reserved Forest	Barchha	1372	0.049	0.98
Madisarai-Badwani	5	Patch-1_3	Koriya	Manendragarh	Janakpur	Reserved Forest	Badwahi	1371	0.097	1.94
Madisarai-Badwani	6	Patch-1_3	Koriya	Manendragarh	Janakpur	Reserved Forest	Barchha	1373	0.053	1.06
Madisarai-Badwani	7	Patch-1_8	Koriya	Manendragarh	Janakpur	Protected Forest	Mehdauli	P1364	0.020	0.4
Madisarai-Badwani	8	Patch-1_8	Koriya	Manendragarh	Janakpur	Protected Forest	Mehdauli	P1363	0.055	1.1
Madisarai-CG/MP Border	9	Patch-2_2	Koriya	Manendragarh	Janakpur	Protected Forest	Mehdauli	P1364	0.011	0.22
Madisarai-CG/MP Border	10	Patch-2_2	Koriya	Manendragarh	Janakpur	Protected Forest	Mehdauli	P1346	0.085	1.7
Madisarai-CG/MP Border	11	Patch-2_8	Koriya	Manendragarh	Janakpur	Protected Forest	Harchoka	P1347	0.022	0.44
Madisarai-CG/MP Border	12	Patch-2_9	Koriya	Manendragarh	Janakpur	Protected Forest	Ghordhara	P1345	0.076	1.52
Neruwa-Bharatpur	13	Patch-3_5	Koriya	Manendragarh	Kuwarpur	Protected Forest	Bharatpur	P1276	0.027	0.54
Neruwa-Bharatpur	14	Patch-3_5	Koriya	Manendragarh	Kuwarpur	Protected Forest	Bharatpur	P1272	0.069	1.38
Neruwa-Bharatpur	15	Patch-3_5	Koriya	Manendragarh	Kuwarpur	Protected Forest	Bharatpur	P1267	0.010	0.2
Neruwa-Bharatpur	16	Patch-3_5	Koriya	Manendragarh	Kuwarpur	Protected Forest	Bhagwanpur	P1275	0.103	2.06
Neruwa-Bharatpur	17	Patch-3_7	Koriya	Manendragarh	Kuwarpur	Protected Forest	Bhagwanpur	P1293	0.026	0.52
Neruwa-Bharatpur	18	Patch-3_7	Koriya	Manendragarh	Janakpur	Protected Forest	Aktawar	P1296	0.108	2.16
Neruwa-Bharatpur	19	Patch-3_7	Koriya	Manendragarh	Janakpur	Protected Forest	Harfara	P1296	0.057	1.14
Neruwa-Bharatpur	20	Patch-3_8	Koriya	Manendragarh	Bhairasi	Reserved Forest	Ghaghra	1124	0.053	1.06
Neruwa-Bharatpur	21	Patch-3_8	Koriya	Manendragarh	Bhairasi	Reserved Forest	Ghaghra	1125	0.017	0.34
Neruwa-Bharatpur	22	Patch-3_8	Koriya	Manendragarh	Bhairasi	Reserved Forest	Ghaghra	1139	0.086	1.72
Neruwa-Bharatpur	24	Patch-3_10	Koriya	Manendragarh	Bhairasi	Protected Forest	Barauta	P1146	0.107	2.14
Neruwa-Bharatpur	25	Patch-3_10	Koriya	Manendragarh	Bhairasi	Protected Forest	Barauta	P1142	0.014	0.28
Rojhi-Shivpur	26	Patch-4_1	Koriya	Manendragarh	Kelhari	Reserved Forest	Rojhi	941	0.068	1.36
Rojhi-Shivpur	27	Patch-4_1	Koriya	Manendragarh	Kelhari	Protected Forest	Dihuli	P936	0.040	0.8
Rojhi-Shivpur	28	Patch-4_2	Koriya	Manendragarh	Kelhari	Protected Forest	Dihuli	P937	0.011	0.22
Rojhi-Shivpur	29	Patch-4_2	Koriya	Manendragarh	Kelhari	Reserved Forest	Dihuli	944	0.068	1.36
Rojhi-Shivpur	30	Patch-4_2	Koriya	Manendragarh	Kelhari	Reserved Forest	Dihuli	969	0.105	2.1
Rojhi-Shivpur	31	Patch-4_2	Koriya	Manendragarh	Kelhari	Reserved Forest	Dihuli	969	0.009	0.18
Rojhi-Shivpur	32	Patch-4_2	Koriya	Manendragarh	Kelhari	Reserved Forest	Dihuli	969	0.027	0.54
Rojhi-Shivpur	33	Patch-4_2	Koriya	Manendragarh	Kelhari	Reserved Forest	Dahiyadnad	962	0.077	1.54
Rojhi-Shivpur	34	Patch-4_2	Koriya	Manendragarh	Kelhari	Reserved Forest	Dahiyadnad	971	0.080	1.6

SCHEDULE OF FOREST LAND - REVENUE FOREST										
MANENDRAGARH DIVISION - REVENUE FOREST AREA STATEMENT										
Span Name	Sr.No.	Patch Number	District	Division	Taluka	Type Of Land	Village Name	Khasra No.	Diversion Area (In Hectare)	Length (KM)
Madisarai-Badwani	1	Patch-1_3	Koriya	Manendragarh	Bharatpur	Revenue Forest	Barchha	1	0.021	0.42
Madisarai-Badwani	2	Patch-1_3	Koriya	Manendragarh	Bharatpur	Revenue Forest	Barchha	2	0.006	0.12
Madisarai-Badwani	3	Patch-1_3	Koriya	Manendragarh	Bharatpur	Revenue Forest	Barchha	42	0.004	0.08
Madisarai-Badwani	4	Patch-1_4	Koriya	Manendragarh	Bharatpur	Revenue Forest	Mehdauli	198	0.003	0.06
Madisarai-Badwani	5	Patch-1_5	Koriya	Manendragarh	Bharatpur	Revenue Forest	Mehdauli	245	0.003	0.06
Madisarai-Badwani	6	Patch-1_6	Koriya	Manendragarh	Bharatpur	Revenue Forest	Mehdauli	284	0.004	0.08
Madisarai-Badwani	7	Patch-1_7	Koriya	Manendragarh	Bharatpur	Revenue Forest	Mehdauli	303	0.002	0.04
Madisarai-Badwani	8	Patch-1_9	Koriya	Manendragarh	Bharatpur	Revenue Forest	Madisarai	366	0.003	0.06
Madisarai-Badwani	9	Patch-1_10	Koriya	Manendragarh	Bharatpur	Revenue Forest	Madisarai	377	0.002	0.04
Madisarai-Badwani	10	Patch-1_11	Koriya	Manendragarh	Bharatpur	Revenue Forest	Madisarai	381	0.005	0.1
Madisarai-CG/MP Border	11	Patch-2_1	Koriya	Manendragarh	Bharatpur	Revenue Forest	Madisarai	665	0.001	0.02
Madisarai-CG/MP Border	12	Patch-2_3	Koriya	Manendragarh	Bharatpur	Revenue Forest	Harchoka	510	0.002	0.04
Madisarai-CG/MP Border	13	Patch-2_4	Koriya	Manendragarh	Bharatpur	Revenue Forest	Harchoka	539	0.003	0.06
Madisarai-CG/MP Border	14	Patch-2_5	Koriya	Manendragarh	Bharatpur	Revenue Forest	Harchoka	543	0.007	0.14
Madisarai-CG/MP Border	15	Patch-2_6	Koriya	Manendragarh	Bharatpur	Revenue Forest	Harchoka	548	0.014	0.28
Madisarai-CG/MP Border	16	Patch-2_7	Koriya	Manendragarh	Bharatpur	Revenue Forest	Harchoka	842	0.009	0.18
Neruwa-Bharatpur	17	Patch-3_1	Koriya	Manendragarh	Bharatpur	Revenue Forest	Janakpur	429	0.004	0.08
Neruwa-Bharatpur	18	Patch-3_2	Koriya	Manendragarh	Bharatpur	Revenue Forest	Janakpur	485	0.002	0.04
Neruwa-Bharatpur	19	Patch-3_3	Koriya	Manendragarh	Bharatpur	Revenue Forest	Janakpur	516	0.002	0.04
Neruwa-Bharatpur	20	Patch-3_4	Koriya	Manendragarh	Bharatpur	Revenue Forest	Janakpur	518	0.003	0.06
Neruwa-Bharatpur	21	Patch-3_4	Koriya	Manendragarh	Bharatpur	Revenue Forest	Janakpur	546	0.002	0.04
Neruwa-Bharatpur	22	Patch-3_6	Koriya	Manendragarh	Bharatpur	Revenue Forest	Bhagwanpur	842	0.003	0.06
Neruwa-Bharatpur	23	Patch-3_8	Koriya	Manendragarh	Bharatpur	Revenue Forest	Sadantola	169	0.001	0.02
Neruwa-Bharatpur	24	Patch-3_9	Koriya	Manendragarh	Bharatpur	Revenue Forest	Khamrodh	613	0.029	0.58
Neruwa-Bharatpur	23	Patch-3_8	Koriya	Manendragarh	Bhairasi	Revenue Forest	Ghaghra	259	0.068	1.36
Kelhari-CG/MP Border	25	Patch-5_1	Koriya	Manendragarh	Manendragarh	Revenue Forest	Manwari	13	0.002	0.04
Kelhari-CG/MP Border	26	Patch-5_2	Koriya	Manendragarh	Manendragarh	Revenue Forest	Manwari	24	0.003	0.06
Kelhari-CG/MP Border	27	Patch-5_3	Koriya	Manendragarh	Manendragarh	Revenue Forest	Manwari	102/2	0.001	0.02
Kelhari-CG/MP Border	28	Patch-5_3	Koriya	Manendragarh	Manendragarh	Revenue Forest	Manwari	104	0.002	0.04
Kelhari-CG/MP Border	29	Patch-5_3	Koriya	Manendragarh	Manendragarh	Revenue Forest	Manwari	105	0.001	0.02
Kelhari-CG/MP Border	30	Patch-5_3	Koriya	Manendragarh	Manendragarh	Revenue Forest	Manwari	102/1	0.001	0.02
Kelhari-CG/MP Border	31	Patch-5_4	Koriya	Manendragarh	Manendragarh	Revenue Forest	Manwari	149	0.001	0.02

Span Name	Sr.No.	Patch Number	District	Division	Taluka	Type Of Land	Village Name	Khasra No.	Diversion Area (In Hectare)	Length (KM)
Kelhari-CG/MP Border	32	Patch-5_5	Koriya	Manendragarh	Manendragarh	Revenue Forest	Manwari	173	0.005	0.1
Kelhari-CG/MP Border	33	Patch-5_7	Koriya	Manendragarh	Manendragarh	Revenue Forest	Dandhanswahi	17	0.001	0.02
Kelhari-CG/MP Border	34	Patch-5_8	Koriya	Manendragarh	Manendragarh	Revenue Forest	Dandhanswahi	50	0.001	0.02
Kelhari-CG/MP Border	35	Patch-5_9	Koriya	Manendragarh	Manendragarh	Revenue Forest	Dandhanswahi	54	0.002	0.04
Kelhari-CG/MP Border	36	Patch-5_9	Koriya	Manendragarh	Manendragarh	Revenue Forest	Dandhanswahi	55	0.008	0.16
Kelhari-CG/MP Border	37	Patch-5_10	Koriya	Manendragarh	Manendragarh	Revenue Forest	Dandhanswahi	390	0.002	0.04
Kelhari-CG/MP Border	38	Patch-5_11	Koriya	Manendragarh	Manendragarh	Revenue Forest	Dandhanswahi	394	0.001	0.02
Kelhari-CG/MP Border	39	Patch-5_12	Koriya	Manendragarh	Manendragarh	Revenue Forest	Dandhanswahi	404	0.005	0.1
Kelhari-CG/MP Border	40	Patch-5_13	Koriya	Manendragarh	Manendragarh	Revenue Forest	Dandhanswahi	534	0.005	0.1
Nagpur-BTS Mahadeopur	41	Patch-8_1	Koriya	Manendragarh	Manendragarh	Revenue Forest	Amritdhara	127	0.002	0.04
Nagpur-BTS Mahadeopur	42	Patch-8_3	Koriya	Manendragarh	Manendragarh	Revenue Forest	Harra	67	0.002	0.04
Manendragarh-Marwahi	43	Patch-9_1	Koriya	Manendragarh	Manendragarh	Revenue Forest	Manendragarh	352/1	0.016	0.32
Manendragarh-Marwahi	44	Patch-9_3	Koriya	Manendragarh	Manendragarh	Revenue Forest	Narayanpur	124	0.011	0.22
Manendragarh-Marwahi	45	Patch-9_3	Koriya	Manendragarh	Manendragarh	Revenue Forest	Narayanpur	101	0.015	0.3
Manendragarh-Marwahi	46	Patch-9_4	Koriya	Manendragarh	Manendragarh	Revenue Forest	Bhauta	386	0.005	0.1
Manendragarh-Marwahi	47	Patch-9_4	Koriya	Manendragarh	Manendragarh	Revenue Forest	Bhauta	388	0.003	0.06
Manendragarh-Marwahi	48	Patch-9_4	Koriya	Manendragarh	Manendragarh	Revenue Forest	Bhauta	387	0.001	0.02
Manendragarh-Marwahi	49	Patch-9_4	Koriya	Manendragarh	Manendragarh	Revenue Forest	Bhauta	390	0.002	0.04
Manendragarh-Marwahi	50	Patch-9_5	Koriya	Manendragarh	Manendragarh	Revenue Forest	Bhauta	562	0.004	0.08
Manendragarh-Marwahi	51	Patch-9_5	Koriya	Manendragarh	Manendragarh	Revenue Forest	Bhauta	563	0.002	0.04
Manendragarh-Marwahi	52	Patch-9_6	Koriya	Manendragarh	Manendragarh	Revenue Forest	Bhauta	644	0.002	0.04
Manendragarh-Marwahi	53	Patch-9_6	Koriya	Manendragarh	Manendragarh	Revenue Forest	Bhauta	645	0.003	0.06
Manendragarh-Marwahi	54	Patch-9_7	Koriya	Manendragarh	Manendragarh	Revenue Forest	Bhauta	808	0.003	0.06
Manendragarh-Marwahi	55	Patch-9_7	Koriya	Manendragarh	Manendragarh	Revenue Forest	Bhauta	807	0.002	0.04
Manendragarh-Marwahi	56	Patch-9_8	Koriya	Manendragarh	Manendragarh	Revenue Forest	Bhauta	805	0.001	0.02
Manendragarh-Marwahi	57	Patch-9_9	Koriya	Manendragarh	Manendragarh	Revenue Forest	Bhauta	803	0.001	0.02
Manendragarh-Marwahi	58	Patch-9_9	Koriya	Manendragarh	Manendragarh	Revenue Forest	Bhauta	792	0.001	0.02
Manendragarh-Marwahi	59	Patch-9_9	Koriya	Manendragarh	Manendragarh	Revenue Forest	Bhauta	791	0.004	0.08
Manendragarh-Marwahi	60	Patch-9_10	Koriya	Manendragarh	Manendragarh	Revenue Forest	Bhauta	912	0.004	0.08
Manendragarh-Marwahi	61	Patch-9_10	Koriya	Manendragarh	Manendragarh	Revenue Forest	Bhauta	915	0.003	0.06
Manendragarh-Marwahi	62	Patch-9_10	Koriya	Manendragarh	Manendragarh	Revenue Forest	Bhauta	914	0.001	0.02
Manendragarh-Marwahi	63	Patch-9_10	Koriya	Manendragarh	Manendragarh	Revenue Forest	Bhauta	911	0.001	0.02
Manendragarh-Marwahi	64	Patch-9_11	Koriya	Manendragarh	Manendragarh	Revenue Forest	Bhauta	782	0.001	0.02
Manendragarh-Marwahi	65	Patch-9_11	Koriya	Manendragarh	Manendragarh	Revenue Forest	Bhauta	781	0.003	0.06
Manendragarh-Marwahi	66	Patch-9_11	Koriya	Manendragarh	Manendragarh	Revenue Forest	Bhauta	780	0.001	0.02

DGPS Survey Points

Manendragarh Division (Segment-I)

Sr.No.	Point ID	Patch No	UTM Coordinates		Geographical Coordinates	
			Easting(m)	Northing(m)	Latitude "N"	Longitude "E"
1	P1	Patch-1_1	569591.4911	2636706.926	23° 50' 24.868" N	81° 41' 0.080" E
2	P2		569584.612	2636682.671	23° 50' 24.080" N	81° 40' 59.833" E
3	P3	Patch-1_2	569185.0809	2633806.214	23° 48' 50.616" N	81° 40' 45.223" E
4	P4		569105.1542	2633571.207	23° 48' 42.987" N	81° 40' 42.359" E
5	P5		569108.7938	2633325.901	23° 48' 35.010" N	81° 40' 42.446" E
6	P6		569020.9284	2633094.802	23° 48' 27.510" N	81° 40' 39.302" E
7	P7		568999.5353	2632851.554	23° 48' 19.604" N	81° 40' 38.505" E
8	P8		568991.229	2632601.846	23° 48' 11.486" N	81° 40' 38.169" E
9	P9		568949.4426	2632363.46	23° 48' 3.741" N	81° 40' 36.652" E
10	P10		568960.0993	2632116.707	23° 47' 55.717" N	81° 40' 36.987" E
11	P11		568842.7218	2631895.993	23° 47' 48.558" N	81° 40' 32.803" E
12	P12		568753.4148	2631666.274	23° 47' 41.103" N	81° 40' 29.608" E
13	P13		568802.7808	2631425.557	23° 47' 33.268" N	81° 40' 31.312" E
14	P14		568899.837	2631196.997	23° 47' 25.822" N	81° 40' 34.703" E
15	P15		569062.1693	2631006.882	23° 47' 19.615" N	81° 40' 40.407" E
16	P16		569220.3943	2630813.333	23° 47' 13.297" N	81° 40' 45.965" E
17	P17		569346.6355	2630602.726	23° 47' 6.430" N	81° 40' 50.390" E
18	P18		569399.0181	2630358.297	23° 46' 58.474" N	81° 40' 52.200" E
19	P19		569451.6171	2630113.903	23° 46' 50.519" N	81° 40' 54.017" E
20	P20	Patch-1_3	569478.8315	2629991.522	23° 46' 46.536" N	81° 40' 54.957" E
21	P21		569581.4941	2629808.464	23° 46' 40.568" N	81° 40' 58.554" E
22	P22	Patch-1_4	570295.5697	2629294.806	23° 46' 23.754" N	81° 41' 23.695" E
23	P23		570382.2394	2629210.678	23° 46' 21.005" N	81° 41' 26.742" E
24	P24	Patch-1_5	570423.3874	2629171.231	23° 46' 19.716" N	81° 41' 28.189" E
25	P25		570446.38	2629149.632	23° 46' 19.010" N	81° 41' 28.998" E
26	P26	Patch-1_6	571055.4068	2628571.837	23° 46' 0.126" N	81° 41' 50.415" E
27	P27		571282.2184	2628335.075	23° 45' 52.392" N	81° 41' 58.386" E
28	P28		571293.6719	2628030.764	23° 45' 42.495" N	81° 41' 58.738" E
29	P29	Patch-1_7	571281.9118	2627967.858	23° 45' 40.452" N	81° 41' 58.312" E
30	P30		571286.6967	2627846.632	23° 45' 36.509" N	81° 41' 58.460" E
31	P31	Patch-1_8	572905.1488	2626903.581	23° 45' 5.585" N	81° 42' 55.466" E
32	P32		573178.2903	2626721.22	23° 44' 59.610" N	81° 43' 5.082" E
33	P33		573433.0365	2626551.544	23° 44' 54.052" N	81° 43' 14.051" E
34	P34		573619.8968	2626369.813	23° 44' 48.112" N	81° 43' 20.618" E

DGPS Survey Points

Manendragarh Division (Segment-I)

Sr.No.	Point ID	Patch No	UTM Coordinates		Geographical Coordinates	
			Easting(m)	Northing(m)	Latitude "N"	Longitude "E"
35	P35	Patch-1_9	574750.2148	2626228.18	23° 44' 43.319" N	81° 44' 0.519" E
36	P36		575064.2075	2626101.471	23° 44' 39.146" N	81° 44' 11.586" E
37	P37		575402.7844	2626133.282	23° 44' 40.123" N	81° 44' 23.551" E
38	P38	Patch-1_10	577050.6732	2625674.709	23° 44' 24.931" N	81° 45' 21.672" E
39	P39		577232.2908	2625362.729	23° 44' 14.756" N	81° 45' 28.028" E
40	P40		577382.98	2625172.711	23° 44' 8.552" N	81° 45' 33.315" E
41	P41		577609.0469	2625072.868	23° 44' 5.266" N	81° 45' 41.280" E
42	P42		577844.6174	2624991.53	23° 44' 2.580" N	81° 45' 49.585" E
43	P43		578021.6433	2624815.834	23° 43' 56.837" N	81° 45' 55.804" E
44	P44		578251.2865	2624801.487	23° 43' 56.330" N	81° 46' 3.912" E
45	P45		578480.6678	2624758.676	23° 43' 54.898" N	81° 46' 12.005" E
46	P46	Patch-1_11	579249.8578	2624552.272	23° 43' 48.051" N	81° 46' 39.132" E
47	P47		579390.0731	2624375.838	23° 43' 42.289" N	81° 46' 44.050" E
48	P48		579562.4154	2624198.538	23° 43' 36.494" N	81° 46' 50.102" E
49	P49		579704.7292	2624009.341	23° 43' 30.317" N	81° 46' 55.092" E
50	P50		579843.0098	2623809.165	23° 43' 23.783" N	81° 46' 59.936" E
51	P51		580019.9257	2623632.535	23° 43' 18.009" N	81° 47' 6.150" E
52	P1	Patch- 2_1	579962.3407	2625753.635	23° 44' 26.985" N	81° 47' 4.529" E
53	P2		580288.8136	2625875.85	23° 44' 30.900" N	81° 47' 16.084" E
54	P3		580453.0161	2626093.139	23° 44' 37.936" N	81° 47' 21.927" E
55	P4		580565.2379	2626322.439	23° 44' 45.371" N	81° 47' 25.936" E
56	P5	Patch- 2_2	580740.367	2626561.529	23° 44' 53.113" N	81° 47' 32.168" E
57	P6		580845.7557	2626802.067	23° 45' 0.915" N	81° 47' 35.938" E
58	P7	Patch- 2_3	580902.5783	2626910.948	23° 45' 4.445" N	81° 47' 37.967" E
59	P8		580958.4436	2627007.433	23° 45' 7.572" N	81° 47' 39.959" E
60	P9	Patch- 2_4	581032.2609	2627163.358	23° 45' 12.628" N	81° 47' 42.598" E
61	P10		581102.7457	2627285.408	23° 45' 16.583" N	81° 47' 45.112" E
62	P11	Patch- 2_5	581243.0594	2627501.679	23° 45' 23.590" N	81° 47' 50.111" E
63	P12		581282.5186	2627558.445	23° 45' 25.428" N	81° 47' 51.516" E
64	P13	Patch- 2_6	581298.7013	2627574.704	23° 45' 25.954" N	81° 47' 52.091" E
65	P14		581435.8078	2627659.313	23° 45' 28.680" N	81° 47' 56.951" E
66	P15	Patch- 2_7	581488.3219	2627679.336	23° 45' 29.321" N	81° 47' 58.810" E
67	P16		581708.826	2627796.677	23° 45' 33.096" N	81° 48' 6.623" E
68	P17		581929.0584	2627913.415	23° 45' 36.851" N	81° 48' 14.426" E
69	P18	Patch- 2_8	581969.4627	2627926.975	23° 45' 37.285" N	81° 48' 15.856" E
70	P19		582176.1229	2627994.784	23° 45' 39.452" N	81° 48' 23.170" E

DGPS Survey Points

Manendragarh Division (Segment-I)

Sr.No.	Point ID	Patch No	UTM Coordinates		Geographical Coordinates	
			Easting(m)	Northing(m)	Latitude "N"	Longitude "E"
71	P20	Patch- 2_8	582425.3425	2627981.007	23° 45' 38.958" N	81° 48' 31.971" E
72	P21		582641.3314	2627881.558	23° 45' 35.684" N	81° 48' 39.581" E
73	P22		582883.3536	2627830.278	23° 45' 33.972" N	81° 48' 48.120" E
74	P23		583102.7607	2627719.266	23° 45' 30.322" N	81° 48' 55.848" E
75	P24		583344.9608	2627658.852	23° 45' 28.312" N	81° 49' 4.392" E
76	P25		583590.3111	2627612.394	23° 45' 26.756" N	81° 49' 13.049" E
77	P26		583762.4181	2627437.981	23° 45' 21.052" N	81° 49' 19.093" E
78	P27		583993.5126	2627348.554	23° 45' 18.101" N	81° 49' 27.238" E
79	P28	Patch- 2_9	584012.839	2627338.301	23° 45' 17.764" N	81° 49' 27.919" E
80	P29		584050.926	2627318.073	23° 45' 17.099" N	81° 49' 29.260" E
81	P1	Patch-3_1	580688.4955	2622740.65	23° 42' 48.889" N	81° 47' 29.586" E
82	P2		580763.11	2622766.303	23° 42' 49.710" N	81° 47' 32.226" E
83	P3	Patch-3_2	581010.2761	2622640.472	23° 42' 45.574" N	81° 47' 40.929" E
84	P4		580858.6681	2622385.168	23° 42' 37.300" N	81° 47' 35.525" E
85	P5		580579.02	2622299.861	23° 42' 34.577" N	81° 47' 25.634" E
86	P6	Patch-3_3	580542.644	2622274.295	23° 42' 33.752" N	81° 47' 24.344" E
87	P7		580441.1689	2622204.136	23° 42' 31.490" N	81° 47' 20.747" E
88	P8	Patch-3_4	580422.0361	2622194.641	23° 42' 31.184" N	81° 47' 20.069" E
89	P9		580466.4739	2622125.297	23° 42' 28.922" N	81° 47' 21.625" E
90	P10		580504.0848	2621956.907	23° 42' 23.440" N	81° 47' 22.920" E
91	P11		580497.6563	2621706.995	23° 42' 15.315" N	81° 47' 22.644" E
92	P12		580495.2057	2621457.01	23° 42' 7.187" N	81° 47' 22.509" E
93	P13		580504.7885	2621207.728	23° 41' 59.080" N	81° 47' 22.799" E
94	P14		580629.0822	2621013.098	23° 41' 52.730" N	81° 47' 27.149" E
95	P15		580776.7451	2620812.719	23° 41' 46.188" N	81° 47' 32.324" E
96	P16		580907.4268	2620600.076	23° 41' 39.250" N	81° 47' 36.896" E
97	P17		581098.9216	2620439.566	23° 41' 33.997" N	81° 47' 43.626" E
98	P18		581291.3457	2620281.301	23° 41' 28.816" N	81° 47' 50.389" E
99	P19		581425.6411	2620070.48	23° 41' 21.937" N	81° 47' 55.088" E
100	P20		581410.5447	2619833.804	23° 41' 14.244" N	81° 47' 54.509" E
101	P21		581536.3159	2619652.208	23° 41' 8.317" N	81° 47' 58.913" E
102	P22		581777.9214	2619662.529	23° 41' 8.608" N	81° 48' 7.445" E
103	P23		581996.1031	2619540.769	23° 41' 4.609" N	81° 48' 15.124" E
104	P24		582154.8151	2619351.482	23° 40' 58.426" N	81° 48' 20.690" E
105	P25		582299.6066	2619149.444	23° 40' 51.830" N	81° 48' 25.761" E
106	P26		582420.9093	2618939.39	23° 40' 44.978" N	81° 48' 30.002" E
107	P27		582414.8433	2618693.672	23° 40' 36.990" N	81° 48' 29.738" E
108	P28		582499.4967	2618459.396	23° 40' 29.357" N	81° 48' 32.680" E
109	P29	Patch-3_5	582548.3528	2618371.616	23° 40' 26.493" N	81° 48' 34.387" E
110	P30		582630.457	2618266.3	23° 40' 23.054" N	81° 48' 37.265" E

DGPS Survey Points

Manendragarh Division (Segment-I)

Sr.No.	Point ID	Patch No	UTM Coordinates		Geographical Coordinates	
			Easting(m)	Northing(m)	Latitude "N"	Longitude "E"
111	P31	Patch-3_6	582762.9021	2618099.066	23° 40' 17.592" N	81° 48' 41.907" E
112	P32		582875.8079	2617959.279	23° 40' 13.026" N	81° 48' 45.864" E
113	P33		582973.9585	2617809.492	23° 40' 8.138" N	81° 48' 49.299" E
114	P34	Patch-3_7	583055.8018	2617679.686	23° 40' 3.902" N	81° 48' 52.162" E
115	P35		583201.7054	2617507.216	23° 39' 58.267" N	81° 48' 57.278" E
116	P36		583360.5702	2617314.191	23° 39' 51.961" N	81° 49' 2.847" E
117	P37		583513.0089	2617116.402	23° 39' 45.502" N	81° 49' 8.188" E
118	P38		583660.1298	2616914.387	23° 39' 38.906" N	81° 49' 13.340" E
119	P39		583810.2908	2616715.784	23° 39' 32.421" N	81° 49' 18.600" E
120	P40		583935.9242	2616503.402	23° 39' 25.492" N	81° 49' 22.992" E
121	P41		584103.2578	2616317.672	23° 39' 19.421" N	81° 49' 28.860" E
122	P42	Patch-3_8	584108.2794	2615938.451	23° 39' 7.090" N	81° 49' 28.960" E
123	P43		584119.5568	2615798.077	23° 39' 2.524" N	81° 49' 29.330" E
124	P44		584337.7525	2615676.749	23° 38' 58.538" N	81° 49' 37.006" E
125	P45		584560.8391	2615564.045	23° 38' 54.832" N	81° 49' 44.857" E
126	P46		584797.0077	2615496.538	23° 38' 52.592" N	81° 49' 53.179" E
127	P47		585042.9303	2615463.006	23° 38' 51.455" N	81° 50' 1.852" E
128	P48		585249.5918	2615322.686	23° 38' 46.854" N	81° 50' 9.117" E
129	P49		585442.9867	2615167.1	23° 38' 41.758" N	81° 50' 15.911" E
130	P50		585578.4694	2614957.165	23° 38' 34.906" N	81° 50' 20.649" E
131	P51		585707.9696	2614744.05	23° 38' 27.952" N	81° 50' 25.175" E
132	P52		585877.0712	2614560.144	23° 38' 21.940" N	81° 50' 31.105" E
133	P53		586002.5402	2614344.24	23° 38' 14.896" N	81° 50' 35.488" E
134	P54		586100.9981	2614114.989	23° 38' 7.423" N	81° 50' 38.915" E
135	P55	Patch-3_9	586147.087	2613993.213	23° 38' 3.455" N	81° 50' 40.517" E
136	P56		586181.9307	2613901.738	23° 38' 0.474" N	81° 50' 41.727" E
137	P57	Patch-3_10	586199.0522	2613855.733	23° 37' 58.975" N	81° 50' 42.322" E
138	P58		586255.4619	2613704.367	23° 37' 54.043" N	81° 50' 44.281" E
139	P59		586341.7236	2613469.742	23° 37' 46.397" N	81° 50' 47.276" E
140	P60		586407.4809	2613228.874	23° 37' 38.553" N	81° 50' 49.546" E
141	P61		586506.5261	2613001.415	23° 37' 31.138" N	81° 50' 52.994" E
142	P62		586612.8998	2612775.25	23° 37' 23.764" N	81° 50' 56.700" E
143	P63		586685.5242	2612536.233	23° 37' 15.979" N	81° 50' 59.213" E
144	P64	Patch-3_11	588034.8426	2610830.333	23° 36' 20.250" N	81° 51' 46.464" E
145	P65		588304.9525	2610719.704	23° 36' 16.600" N	81° 51' 55.971" E
146	P66		588562.246	2610607.532	23° 36' 12.902" N	81° 52' 5.026" E
147	P67	Patch-3_12	588741.0726	2610221.604	23° 36' 0.319" N	81° 52' 11.252" E
148	P68		588877.7763	2609968.985	23° 35' 52.078" N	81° 52' 16.021" E
149	P69		588927.2347	2609951.69	23° 35' 51.506" N	81° 52' 17.762" E
150	P70		588879.5815	2610165.743	23° 35' 58.475" N	81° 52' 16.127" E

DGPS Survey Points

Manendragarh Division (Segment-I)

Sr.No.	Point ID	Patch No	UTM Coordinates		Geographical Coordinates	
			Easting(m)	Northing(m)	Latitude "N"	Longitude "E"
151	P71	Patch-3_12	589063.7369	2610322.859	23° 36' 3.547" N	81° 52' 22.658" E
152	P72		589170.2079	2610224.789	23° 36' 0.337" N	81° 52' 26.394" E
153	P73		589027.4198	2610108.585	23° 35' 56.587" N	81° 52' 21.331" E
154	P74		589157.7658	2609926.802	23° 35' 50.651" N	81° 52' 25.891" E
155	P75		589274.5411	2609706.591	23° 35' 43.468" N	81° 52' 29.963" E
156	P76		589489.4981	2609591.66	23° 35' 39.688" N	81° 52' 37.522" E
157	P77		589712.7552	2609480.04	23° 35' 36.014" N	81° 52' 45.375" E
158	P78		589957.6937	2609431.872	23° 35' 34.399" N	81° 52' 54.006" E
159	P79		590203.3993	2609472.294	23° 35' 35.664" N	81° 53' 2.683" E
160	P80		590334.3198	2609297.204	23° 35' 29.945" N	81° 53' 7.264" E
161	P81		590575.3368	2609234.891	23° 35' 27.870" N	81° 53' 15.753" E
162	P82		590806.5658	2609161.511	23° 35' 25.438" N	81° 53' 23.894" E
163	P83		591045.2665	2609112.698	23° 35' 23.802" N	81° 53' 32.305" E
164	P84	Patch-3_13	591093.5842	2608809.501	23° 35' 13.935" N	81° 53' 33.943" E
165	P85		591068.0934	2608521.331	23° 35' 4.570" N	81° 53' 32.980" E
166	P86		591205.827	2608313.707	23° 34' 57.792" N	81° 53' 37.793" E
167	P87		591379.2511	2608135.817	23° 34' 51.972" N	81° 53' 43.872" E
168	P88		591616.534	2608057.156	23° 34' 49.366" N	81° 53' 52.225" E
169	P89		591855.196	2607982.76	23° 34' 46.899" N	81° 54' 0.628" E
170	P90		592080.6023	2607879.616	23° 34' 43.499" N	81° 54' 8.556" E
171	P91		592305.18	2607772.842	23° 34' 39.981" N	81° 54' 16.455" E
172	P92		592526.4707	2607660.503	23° 34' 36.283" N	81° 54' 24.236" E
173	P93		592750.33	2607602.8	23° 34' 34.361" N	81° 54' 32.120" E
174	P94		592992.3462	2607609.723	23° 34' 34.536" N	81° 54' 40.659" E
175	P95		593235.0481	2607549.777	23° 34' 32.537" N	81° 54' 49.207" E
176	P96	Patch-3_14	595201.977	2607383.235	23° 34' 26.710" N	81° 55' 58.552" E
177	P97		595462.4564	2607407.814	23° 34' 27.454" N	81° 56' 7.746" E
178	P98		595627.3913	2607455.79	23° 34' 28.978" N	81° 56' 13.575" E
179	P99		595867.1862	2607525.319	23° 34' 31.188" N	81° 56' 22.050" E
180	P100		596096.4049	2607485.963	23° 34' 29.859" N	81° 56' 30.126" E
181	P101		596335.4602	2607479.579	23° 34' 29.601" N	81° 56' 38.557" E
182	P102		596582.5223	2607503.734	23° 34' 30.333" N	81° 56' 47.278" E
183	P103		596807.1301	2607394.09	23° 34' 26.720" N	81° 56' 55.175" E
184	P104		597028.3885	2607278.181	23° 34' 22.904" N	81° 57' 2.953" E
185	P105		597236.0259	2607139.474	23° 34' 18.349" N	81° 57' 10.245" E
186	P106		597222.2869	2606895.447	23° 34' 10.418" N	81° 57' 9.703" E
187	P107		597187.526	2606647.929	23° 34' 2.377" N	81° 57' 8.418" E
188	P108		597259.5567	2606439.026	23° 33' 55.570" N	81° 57' 10.910" E
189	P109		597462.5815	2606293.162	23° 33' 50.783" N	81° 57' 18.037" E
190	P110		597669.8069	2606154.655	23° 33' 46.235" N	81° 57' 25.314" E
191	P111		597880.232	2606063.413	23° 33' 43.223" N	81° 57' 32.714" E

DGPS Survey Points

Manendragarh Division (Segment-I)

Sr.No.	Point ID	Patch No	UTM Coordinates		Geographical Coordinates	
			Easting(m)	Northing(m)	Latitude "N"	Longitude "E"
192	P112	Patch-3_15	598045.3767	2605951.926	23° 33' 39.562" N	81° 57' 38.512" E
193	P113		598081.8814	2605831.081	23° 33' 35.625" N	81° 57' 39.771" E
194	P114		598172.6179	2605600.996	23° 33' 28.124" N	81° 57' 42.917" E
195	P116		598334.9928	2605410.929	23° 33' 21.909" N	81° 57' 48.599" E
196	P117		598400.8281	2605172.212	23° 33' 14.133" N	81° 57' 50.865" E
197	P118		598551.9675	2604973.576	23° 33' 7.642" N	81° 57' 56.148" E
198	P119		598742.6434	2604812.521	23° 33' 2.363" N	81° 58' 2.834" E
199	P120		598895.3024	2604631.4	23° 32' 56.441" N	81° 58' 8.175" E
200	P121		599110.394	2604504.544	23° 32' 52.269" N	81° 58' 15.731" E
201	P122		599335.2927	2604396.293	23° 32' 48.700" N	81° 58' 23.636" E
202	P123		599531.4103	2604241.84	23° 32' 43.635" N	81° 58' 30.516" E
203	P124		599705.8076	2604063.057	23° 32' 37.783" N	81° 58' 36.623" E
204	P125		599906.6372	2603918.869	23° 32' 33.051" N	81° 58' 43.671" E
205	P126		600067.1323	2603727.823	23° 32' 26.804" N	81° 58' 49.285" E
206	P127		600268.5215	2603582.197	23° 32' 22.024" N	81° 58' 56.352" E
207	P128		600468.1195	2603432.516	23° 32' 17.113" N	81° 59' 3.354" E
208	P129		600685.6939	2603309.418	23° 32' 13.062" N	81° 59' 10.997" E
209	P130		600741.3597	2603107.001	23° 32' 6.468" N	81° 59' 12.911" E
210	P131		600671.7783	2602866.899	23° 31' 58.677" N	81° 59' 10.399" E
211	P132		600597.9379	2602629.627	23° 31' 50.979" N	81° 59' 7.738" E
212	P133		600391.1858	2602505.438	23° 31' 46.988" N	81° 59' 0.417" E
213	P134		600157.2567	2602417.504	23° 31' 44.181" N	81° 58' 52.147" E
214	P135		599920.9614	2602335.972	23° 31' 41.582" N	81° 58' 43.795" E
215	P136		599681.2464	2602342.484	23° 31' 41.847" N	81° 58' 35.344" E
216	P137		599441.1049	2602411.854	23° 31' 44.156" N	81° 58' 26.893" E
217	P138		599191.4464	2602421.802	23° 31' 44.534" N	81° 58' 18.092" E
218	P139		598941.5236	2602426.107	23° 31' 44.729" N	81° 58' 9.280" E
219	P140		598697.0368	2602374.328	23° 31' 43.099" N	81° 58' 0.646" E
220	P141		598453.3498	2602407.906	23° 31' 44.244" N	81° 57' 52.061" E
221	P142		598219.4972	2602354.021	23° 31' 42.543" N	81° 57' 43.802" E
222	P143		597969.6642	2602362.502	23° 31' 42.873" N	81° 57' 34.995" E
223	P144		597720.8663	2602379.583	23° 31' 43.483" N	81° 57' 26.226" E
224	P145		597502.012	2602499.862	23° 31' 47.441" N	81° 57' 18.537" E
225	P146		597282.4071	2602430.397	23° 31' 45.230" N	81° 57' 10.777" E
226	P147		597033.4252	2602408.173	23° 31' 44.561" N	81° 57' 1.992" E
227	P148		597098.1187	2602272.456	23° 31' 40.134" N	81° 57' 4.241" E
228	P149		597288.4534	2602116.223	23° 31' 35.013" N	81° 57' 10.916" E
229	P150		597436.5844	2601918.562	23° 31' 28.555" N	81° 57' 16.093" E
230	P151		597324.0908	2601759.965	23° 31' 23.423" N	81° 57' 12.089" E
231	P152		597156.5298	2601633.966	23° 31' 19.362" N	81° 57' 6.152" E
232	P153		597110.9789	2601474.955	23° 31' 14.202" N	81° 57' 4.508" E
233	P154		597165.9592	2601231.083	23° 31' 6.261" N	81° 57' 6.390" E
234	P155		597284.5153	2601015.558	23° 30' 59.228" N	81° 57' 10.520" E
235	P156		597267.9181	2600774.644	23° 30' 51.398" N	81° 57' 9.878" E
236	P157		597059.4898	2600657.614	23° 30' 47.638" N	81° 57' 2.502" E

DGPS Survey Points

Manendragarh Division (Segment-I)

Sr.No.	Point ID	Patch No	UTM Coordinates		Geographical Coordinates	
			Easting(m)	Northing(m)	Latitude "N"	Longitude "E"
237	P158	Patch-3_15	597063.1982	2600420.111	23° 30' 39.915" N	81° 57' 2.577" E
238	P159		597115.786	2600182.697	23° 30' 32.184" N	81° 57' 4.376" E
239	P160		597313.248	2600030.108	23° 30' 27.181" N	81° 57' 11.302" E
240	P161		597554.0662	2599964.058	23° 30' 24.981" N	81° 57' 19.777" E
241	P162		597792.746	2599890.419	23° 30' 22.535" N	81° 57' 28.175" E
242	P163		597925.3403	2599721.669	23° 30' 17.020" N	81° 57' 32.810" E
243	P164		597907.803	2599475.417	23° 30' 9.017" N	81° 57' 32.134" E
244	P165		598035.0992	2599264.071	23° 30' 2.118" N	81° 57' 36.572" E
245	P166		598051.2308	2599015.71	23° 29' 54.039" N	81° 57' 37.082" E
246	P167		598187.4784	2598815.382	23° 29' 47.496" N	81° 57' 41.838" E
247	P168		598389.2817	2598671.371	23° 29' 42.770" N	81° 57' 48.918" E
248	P169		598521.0445	2598458.96	23° 29' 35.835" N	81° 57' 53.513" E
249	P170		598644.3873	2598242.622	23° 29' 28.774" N	81° 57' 57.810" E
250	P171		598777.875	2598037.957	23° 29' 22.090" N	81° 58' 2.467" E
251	P172		598989.8783	2597910.311	23° 29' 17.893" N	81° 58' 9.910" E
252	P173		599204.0503	2597799.727	23° 29' 14.251" N	81° 58' 17.434" E
253	P174		599197.0499	2597593.84	23° 29' 7.558" N	81° 58' 17.138" E
254	P175		599148.0977	2597350.725	23° 28' 59.665" N	81° 58' 15.354" E
255	P176		599355.7519	2597256.636	23° 28' 56.560" N	81° 58' 22.652" E
256	P177	Patch-3_16	600497.7747	2594714.126	23° 27' 33.641" N	81° 59' 2.294" E
257	P178		600778.5379	2594777.03	23° 27' 35.623" N	81° 59' 12.205" E
258	P179		601012.0292	2594866.295	23° 27' 38.474" N	81° 59' 20.455" E
259	P180		601252.6751	2594926.627	23° 27' 40.381" N	81° 59' 28.951" E
260	P181	Patch-3_17	604290.4587	2593500.043	23° 26' 53.308" N	82° 1' 15.657" E
261	P182		604405.1579	2593228.231	23° 26' 44.444" N	82° 1' 19.631" E
262	P183		604519.6936	2593006.565	23° 26' 37.210" N	82° 1' 23.612" E
263	P184		604621.7943	2592778.59	23° 26' 29.774" N	82° 1' 27.153" E
264	P185	Patch-3_18	604707.2646	2592653.458	23° 26' 25.686" N	82° 1' 30.133" E
265	P186		604930.9538	2592535.304	23° 26' 21.793" N	82° 1' 37.986" E
266	P187		605210.0393	2592522.648	23° 26' 21.316" N	82° 1' 47.817" E
267	P188	Patch-3_19	605487.3832	2592001.697	23° 26' 4.314" N	82° 1' 57.458" E
268	P189		605665.8202	2591852.915	23° 25' 59.435" N	82° 2' 3.708" E
269	P190		605881.3848	2591726.405	23° 25' 55.271" N	82° 2' 11.272" E
270	P191		605958.569	2591493.759	23° 25' 47.689" N	82° 2' 13.932" E
271	P192		606009.3213	2591248.977	23° 25' 39.719" N	82° 2' 15.658" E
272	P193		606061.5371	2591004.496	23° 25' 31.758" N	82° 2' 17.436" E
273	P194		606120.4904	2590761.753	23° 25' 23.851" N	82° 2' 19.452" E
274	P1	Patch-4_1	607336.9909	2589904.995	23° 24' 55.709" N	82° 3' 2.093" E
275	P2		607476.4881	2589969.293	23° 24' 57.766" N	82° 3' 7.024" E
276	P3		607722.1255	2590015.416	23° 24' 59.207" N	82° 3' 15.690" E

DGPS Survey Points

Manendragarh Division (Segment-I)

Sr.No.	Point ID	Patch No	UTM Coordinates		Geographical Coordinates	
			Easting(m)	Northing(m)	Latitude "N"	Longitude "E"
277	P4	Patch-4_1	607968.4196	2590058.275	23° 25' 0.542" N	82° 3' 24.378" E
278	P5		608214.3558	2590103.085	23° 25' 1.941" N	82° 3' 33.055" E
279	P6		608356.7465	2590251.341	23° 25' 6.727" N	82° 3' 38.110" E
280	P7		608385.8331	2590486.628	23° 25' 14.370" N	82° 3' 39.196" E
281	P8		608596.142	2590621.699	23° 25' 18.711" N	82° 3' 46.640" E
282	P9		608823.7881	2590723.498	23° 25' 21.966" N	82° 3' 54.687" E
283	P10		609062.0652	2590798.888	23° 25' 24.360" N	82° 4' 3.102" E
284	P11		609300.9199	2590872.498	23° 25' 26.696" N	82° 4' 11.537" E
285	P12		609549.6315	2590857.105	23° 25' 26.135" N	82° 4' 20.296" E
286	P13		609797.9186	2590828.936	23° 25' 25.159" N	82° 4' 29.036" E
287	P14		610044.0175	2590788.656	23° 25' 23.790" N	82° 4' 37.697" E
288	P15		610251.6298	2590912.627	23° 25' 27.770" N	82° 4' 45.044" E
289	P16	Patch-4_2	611307.8343	2591608.087	23° 25' 50.123" N	82° 5' 22.443" E
290	P17		611443.6264	2591662.228	23° 25' 51.850" N	82° 5' 27.242" E
291	P18		611544.7098	2591770.312	23° 25' 55.339" N	82° 5' 30.832" E
292	P19		611716.4418	2591951.981	23° 26' 1.203" N	82° 5' 36.932" E
293	P20		611927.0542	2592064.15	23° 26' 4.798" N	82° 5' 44.383" E
294	P21		612170.728	2592117.064	23° 26' 6.458" N	82° 5' 52.983" E
295	P22		612419.3761	2592131.393	23° 26' 6.862" N	82° 6' 1.748" E
296	P23		612664.2086	2592181.914	23° 26' 8.444" N	82° 6' 10.389" E
297	P24		612909.6795	2592229.231	23° 26' 9.921" N	82° 6' 19.051" E
298	P25		613156.8862	2592200.501	23° 26' 8.925" N	82° 6' 27.754" E
299	P26		613403.3471	2592158.735	23° 26' 7.506" N	82° 6' 36.427" E
300	P27		613649.436	2592128.21	23° 26' 6.451" N	82° 6' 45.089" E
301	P28		613889.153	2592198.999	23° 26' 8.693" N	82° 6' 53.555" E
302	P29		614133.0713	2592250.203	23° 26' 10.296" N	82° 7' 2.164" E
303	P30		614381.8041	2592267.632	23° 26' 10.800" N	82° 7' 10.933" E
304	P31		614624.0733	2592316.288	23° 26' 12.320" N	82° 7' 19.483" E
305	P32		614859.5102	2592399.98	23° 26' 14.982" N	82° 7' 27.802" E
306	P33		615099.439	2592470.012	23° 26' 17.198" N	82° 7' 36.275" E
307	P34	Patch-4_3	615611.1413	2592588.909	23° 26' 20.933" N	82° 7' 54.339" E
308	P35		615861.1033	2592635.761	23° 26' 22.392" N	82° 8' 3.159" E
309	P36		616100.9441	2592706.224	23° 26' 24.622" N	82° 8' 11.630" E
310	P37		616341.0036	2592775.382	23° 26' 26.808" N	82° 8' 20.108" E
311	P38		616546.0024	2592912.804	23° 26' 31.224" N	82° 8' 27.370" E
312	P39		616708.9648	2592735.001	23° 26' 25.401" N	82° 8' 33.063" E
313	P40		616782.0866	2592498.372	23° 26' 17.689" N	82° 8' 35.573" E
314	P41		616938.2419	2592349.333	23° 26' 12.803" N	82° 8' 41.034" E
315	P42		617179.8021	2592294.995	23° 26' 10.974" N	82° 8' 49.530" E
316	P43		617416.8431	2592335.114	23° 26' 12.217" N	82° 8' 57.893" E
317	P44		617654.7764	2592392.317	23° 26' 14.015" N	82° 9' 6.293" E
318	P45		617904.406	2592405.638	23° 26' 14.383" N	82° 9' 15.093" E

DGPS Survey Points

Manendragarh Division (Segment-I)

Sr.No.	Point ID	Patch No	UTM Coordinates		Geographical Coordinates	
			Easting(m)	Northing(m)	Latitude "N"	Longitude "E"
319	P46	Patch-4_4	619369.0369	2591188.101	23° 25' 34.414" N	82° 10' 6.352" E
320	P47		619664.3341	2590993.879	23° 25' 28.022" N	82° 10' 16.700" E
321	P48		619928.2565	2590773.494	23° 25' 20.787" N	82° 10' 25.936" E
322	P49	Patch-4_5	621031.0288	2589409.007	23° 24' 36.132" N	82° 11' 4.393" E
323	P50		621218.027	2589334.029	23° 24' 33.644" N	82° 11' 10.959" E
324	P51		621397.9445	2589165.208	23° 24' 28.107" N	82° 11' 17.248" E
325	P52		621510.0437	2588945.581	23° 24' 20.937" N	82° 11' 21.133" E
326	P53		621727.8042	2588822.932	23° 24' 16.891" N	82° 11' 28.768" E
327	P54		621942.658	2588695.558	23° 24' 12.692" N	82° 11' 36.300" E
328	P55		622136.0379	2588537.525	23° 24' 7.502" N	82° 11' 43.066" E
329	P56		622284.2376	2588336.259	23° 24' 0.919" N	82° 11' 48.227" E
330	P57		622428.5149	2588132.123	23° 23' 54.243" N	82° 11' 53.250" E
331	P58		622637.9697	2588055.244	23° 23' 51.687" N	82° 12' 0.605" E
332	P59		622883.9037	2588100.018	23° 23' 53.076" N	82° 12' 9.281" E
333	P60		623129.383	2588097.32	23° 23' 52.922" N	82° 12' 17.927" E
334	P61		623371.6516	2588114.29	23° 23' 53.407" N	82° 12' 26.466" E
335	P62		623512.7965	2588319.927	23° 24' 0.055" N	82° 12' 31.499" E
336	P63		623678.1763	2588505.69	23° 24' 6.049" N	82° 12' 37.379" E
337	P64		623908.7142	2588592.186	23° 24' 8.798" N	82° 12' 45.526" E
338	P65		624156.3007	2588563.535	23° 24' 7.799" N	82° 12' 54.238" E
339	P66		624378.2472	2588618.398	23° 24' 9.522" N	82° 13' 2.073" E
340	P67		624538.5067	2588810.268	23° 24' 15.716" N	82° 13' 7.775" E
341	P68		624679.8449	2589015.679	23° 24' 22.355" N	82° 13' 12.815" E
342	P69		624909.6426	2589110.532	23° 24' 25.375" N	82° 13' 20.939" E
343	P70		625149.6121	2589180.386	23° 24' 27.580" N	82° 13' 29.413" E
344	P71		625395.432	2589202.644	23° 24' 28.236" N	82° 13' 38.079" E
345	P72		625612.2856	2589078.953	23° 24' 24.155" N	82° 13' 45.681" E
346	P73		625853.7217	2589017.165	23° 24' 22.079" N	82° 13' 54.167" E
347	P74		626093.1444	2589086.293	23° 24' 24.260" N	82° 14' 2.622" E
348	P75		626339.5637	2589088.876	23° 24' 24.275" N	82° 14' 11.303" E
349	P76		626537.437	2588936.413	23° 24' 19.263" N	82° 14' 18.228" E
350	P77		626717.3419	2588764.135	23° 24' 13.612" N	82° 14' 24.513" E
351	P78		626877.8255	2588572.531	23° 24' 7.338" N	82° 14' 30.108" E
352	P79		626913.0769	2588328.118	23° 23' 59.382" N	82° 14' 31.275" E
353	P80		626777.5515	2588122.415	23° 23' 52.732" N	82° 14' 26.439" E
354	P81		626624.1949	2587926.012	23° 23' 46.390" N	82° 14' 20.978" E
355	P82		626606.5549	2587690.887	23° 23' 38.750" N	82° 14' 20.286" E
356	P83		626630.0828	2587443.145	23° 23' 30.689" N	82° 14' 21.039" E
357	P84		626551.1305	2587206.015	23° 23' 23.002" N	82° 14' 18.187" E
358	P85		626475.3651	2586968.452	23° 23' 15.300" N	82° 14' 15.446" E
359	P86		626470.5434	2586719.433	23° 23' 7.205" N	82° 14' 15.201" E
360	P87		626445.6613	2586474.586	23° 22' 59.252" N	82° 14' 14.251" E
361	P88		626397.7933	2586235.208	23° 22' 51.483" N	82° 14' 12.493" E
362	P89		626369.1984	2585997.422	23° 22' 43.760" N	82° 14' 11.414" E

DGPS Survey Points

Manendragarh Division (Segment-I)

Sr.No.	Point ID	Patch No	UTM Coordinates		Geographical Coordinates	
			Easting(m)	Northing(m)	Latitude "N"	Longitude "E"
363	P90	Patch-4_5	626544.8628	2585830.58	23° 22' 38.287" N	82° 14' 17.550" E
364	P91		626730.2987	2585664.375	23° 22' 32.832" N	82° 14' 24.031" E
365	P92		626907.2215	2585487.756	23° 22' 27.040" N	82° 14' 30.208" E
366	P93	Patch-4_6	627243.4013	2585148.565	23° 22' 15.918" N	82° 14' 41.945" E
367	P94		627321.8488	2584935.608	23° 22' 8.973" N	82° 14' 44.643" E
368	P95	Patch-4_7	627435.7589	2584565.959	23° 21' 56.923" N	82° 14' 48.542" E
369	P96		627443.6744	2584527.904	23° 21' 55.684" N	82° 14' 48.809" E
370	P97	Patch-4_8	627459.2659	2584452.946	23° 21' 53.242" N	82° 14' 49.335" E
371	P98		627469.6946	2584410.359	23° 21' 51.855" N	82° 14' 49.690" E
372	P99	Patch-4_9	627481.6466	2584379.108	23° 21' 50.836" N	82° 14' 50.101" E
373	P100		627587.6287	2584196.027	23° 21' 44.854" N	82° 14' 53.778" E
374	P101	Patch-4_10	627635.4258	2584116.068	23° 21' 42.241" N	82° 14' 55.436" E
375	P102		627646.4017	2584097.438	23° 21' 41.632" N	82° 14' 55.817" E
376	P103	Patch-4_11	627715.2817	2583980.524	23° 21' 37.812" N	82° 14' 58.207" E
377	P104		627750.4519	2583921.738	23° 21' 35.890" N	82° 14' 59.428" E
378	P105	Patch-4_12	627814.9865	2583846.764	23° 21' 33.435" N	82° 15' 1.677" E
379	P106		628041.5012	2583560.531	23° 21' 24.065" N	82° 15' 9.567" E
380	P107	Patch-4_13	628039.2147	2583538.922	23° 21' 23.363" N	82° 15' 9.479" E
381	P108		628026.8834	2583445.009	23° 21' 20.314" N	82° 15' 9.017" E
382	P109	Patch-4_14	628012.1369	2583339.822	23° 21' 16.898" N	82° 15' 8.465" E
383	P110		628005.6907	2583291.528	23° 21' 15.330" N	82° 15' 8.223" E
384	P111	Patch-4_15	628019.1596	2583064.883	23° 21' 7.957" N	82° 15' 8.629" E
385	P112		628072.6329	2583004.959	23° 21' 5.994" N	82° 15' 10.493" E
386	P113	Patch-4_16	627968.1168	2580845.801	23° 19' 55.827" N	82° 15' 6.155" E
387	P114		627960.1483	2580650.754	23° 19' 49.488" N	82° 15' 5.815" E
388	P115		628171.7264	2580550.061	23° 19' 46.155" N	82° 15' 13.233" E
389	P116		628418.9138	2580512.677	23° 19' 44.870" N	82° 15' 21.924" E
390	P117		628663.4371	2580461.353	23° 19' 43.132" N	82° 15' 30.517" E
391	P118		628903.2141	2580390.768	23° 19' 40.769" N	82° 15' 38.937" E
392	P119		629086.8219	2580252.197	23° 19' 36.212" N	82° 15' 45.358" E
393	P120		629012.1726	2580013.986	23° 19' 28.489" N	82° 15' 42.657" E
394	P121		628914.8227	2579783.808	23° 19' 21.033" N	82° 15' 39.159" E
395	P122		628795.3337	2579564.384	23° 19' 13.933" N	82° 15' 34.885" E
396	P123		628676.962	2579344.231	23° 19' 6.809" N	82° 15' 30.651" E
397	P124		628568.5847	2579118.954	23° 18' 59.516" N	82° 15' 26.767" E

DGPS Survey Points

Manendragarh Division (Segment-I)

Sr.No.	Point ID	Patch No	UTM Coordinates		Geographical Coordinates	
			Easting(m)	Northing(m)	Latitude "N"	Longitude "E"
398	P125	Patch-4_16	628483.9022	2578884.572	23° 18' 51.919" N	82° 15' 23.714" E
399	P126		628263.0191	2578785.214	23° 18' 48.752" N	82° 15' 15.908" E
400	P127		628124.8618	2578587.472	23° 18' 42.362" N	82° 15' 10.985" E
401	P128		628054.9291	2578349.162	23° 18' 34.633" N	82° 15' 8.450" E
402	P129		627934.7946	2578129.988	23° 18' 27.542" N	82° 15' 4.155" E
403	P130		627797.9445	2577922.235	23° 18' 20.826" N	82° 14' 59.275" E
404	P131		627633.7194	2577733.758	23° 18' 14.744" N	82° 14' 53.437" E
405	P132		627537.9484	2577505.626	23° 18' 7.354" N	82° 14' 49.997" E
406	P133		627419.0657	2577287.783	23° 18' 0.305" N	82° 14' 45.746" E
407	P134		627378.1544	2577090.378	23° 17' 53.898" N	82° 14' 44.246" E
408	P1	Patch- 5_1	585696.6184	2614628.554	23° 38' 24.199" N	81° 50' 24.751" E
409	P2		585799.4088	2614600.729	23° 38' 23.275" N	81° 50' 28.373" E
410	P3		585937.9585	2614394.084	23° 38' 16.529" N	81° 50' 33.220" E
411	P4		586046.8218	2614169.635	23° 38' 9.211" N	81° 50' 37.015" E
412	P5		586134.9589	2613935.695	23° 38' 1.587" N	81° 50' 40.077" E
413	P6		586222.427	2613701.501	23° 37' 53.956" N	81° 50' 43.115" E
414	P7	Patch- 5_2	586247.2336	2613633.946	23° 37' 51.755" N	81° 50' 43.976" E
415	P8		586327.3022	2613408.324	23° 37' 44.403" N	81° 50' 46.754" E
416	P9		586387.0491	2613165.989	23° 37' 36.512" N	81° 50' 48.812" E
417	P10		586499.4108	2612942.88	23° 37' 29.236" N	81° 50' 52.731" E
418	P11		586597.5631	2612713.599	23° 37' 21.763" N	81° 50' 56.146" E
419	P12		586669.3648	2612474.46	23° 37' 13.973" N	81° 50' 58.630" E
420	P13	Patch- 5_3	585639.1153	2611679.972	23° 36' 48.339" N	81° 50' 22.110" E
421	P14		585405.7808	2611745.175	23° 36' 50.503" N	81° 50' 13.890" E
422	P15		585202.1917	2611620.192	23° 36' 46.478" N	81° 50' 6.681" E
423	P16		585010.9658	2611459.209	23° 36' 41.280" N	81° 49' 59.900" E
424	P17		584836.989	2611285.487	23° 36' 35.665" N	81° 49' 53.725" E
425	P18		584738.7481	2611061.707	23° 36' 28.407" N	81° 49' 50.213" E
426	P19		584579.1754	2610879.438	23° 36' 22.511" N	81° 49' 44.545" E
427	P20	Patch- 5_4	581150.5342	2609956.761	23° 35' 53.143" N	81° 47' 43.387" E
428	P21		580880.1167	2609732.483	23° 35' 45.900" N	81° 47' 33.802" E
429	P22		580794.4661	2609575.387	23° 35' 40.807" N	81° 47' 30.750" E
430	P23		580514.6291	2609408.367	23° 35' 35.427" N	81° 47' 20.844" E
431	P24	Patch- 5_5	579808.4608	2609269.508	23° 35' 31.038" N	81° 46' 55.903" E
432	P25		579661.8783	2609307.348	23° 35' 32.294" N	81° 46' 50.739" E
433	P26	Patch- 5_6	579233.5749	2609476.466	23° 35' 37.869" N	81° 46' 35.660" E
434	P27		579023.052	2609421.699	23° 35' 36.125" N	81° 46' 28.222" E
435	P28	Patch- 5_7	578753.5207	2609346.221	23° 35' 33.718" N	81° 46' 18.699" E
436	P29		578275.4503	2609233.97	23° 35' 30.152" N	81° 46' 1.811" E

DGPS Survey Points

Manendragarh Division (Segment-I)

Sr.No.	Point ID	Patch No	UTM Coordinates		Geographical Coordinates	
			Easting(m)	Northing(m)	Latitude "N"	Longitude "E"
437	P30	Patch- 5_8	575017.9901	2609382.45	23° 35' 35.536" N	81° 44' 6.911" E
438	P31		574770.2975	2609370.576	23° 35' 35.191" N	81° 43' 58.170" E
439	P32		574520.7515	2609383.854	23° 35' 35.664" N	81° 43' 49.368" E
440	P33		574271.5137	2609396.988	23° 35' 36.133" N	81° 43' 40.577" E
441	P34		574030.1175	2609340.634	23° 35' 34.340" N	81° 43' 32.050" E
442	P35		573785.4799	2609341.936	23° 35' 34.423" N	81° 43' 23.419" E
443	P36		573695.8688	2609144.668	23° 35' 28.023" N	81° 43' 20.223" E
444	P37		573452.7024	2609094.826	23° 35' 26.442" N	81° 43' 11.635" E
445	P38		573214.102	2609147.321	23° 35' 28.188" N	81° 43' 3.226" E
446	P39		573111.1051	2609374.501	23° 35' 35.592" N	81° 42' 59.632" E
447	P40		572927.2005	2609471.395	23° 35' 38.772" N	81° 42' 53.161" E
448	P41		572807.9087	2609372.321	23° 35' 35.570" N	81° 42' 48.935" E
449	P42	Patch- 5_9	571469.4094	2606852.893	23° 34' 13.864" N	81° 42' 1.275" E
450	P43		571258.3921	2606724.922	23° 34' 9.737" N	81° 41' 53.810" E
451	P44		571028.7224	2606626.454	23° 34' 6.571" N	81° 41' 45.691" E
452	P45		570816.2362	2606495.257	23° 34' 2.339" N	81° 41' 38.173" E
453	P46		570604.6372	2606362.529	23° 33' 58.057" N	81° 41' 30.686" E
454	P47		570368.9899	2606331.809	23° 33' 57.095" N	81° 41' 22.369" E
455	P48		570127.0063	2606301.665	23° 33' 56.152" N	81° 41' 13.828" E
456	P49		569884.9627	2606239.864	23° 33' 54.180" N	81° 41' 5.280" E
457	P50		569646.3666	2606173.485	23° 33' 52.059" N	81° 40' 56.852" E
458	P51		569503.1578	2605972.385	23° 33' 45.542" N	81° 40' 51.767" E
459	P52		569322.0358	2605800.593	23° 33' 39.984" N	81° 40' 45.349" E
460	P53		569164.7339	2605606.736	23° 33' 33.705" N	81° 40' 39.768" E
461	P54		569109.0604	2605368.145	23° 33' 25.956" N	81° 40' 37.765" E
462	P55		569013.5673	2605150.66	23° 33' 18.899" N	81° 40' 34.360" E
463	P56		568852.2578	2604963.396	23° 33' 12.834" N	81° 40' 28.640" E
464	P57		568806.0716	2604718.529	23° 33' 4.879" N	81° 40' 26.970" E
465	P58		568770.3362	2604460.64	23° 32' 56.499" N	81° 40' 25.667" E
466	P59	Patch- 5_10	568710.1238	2604344.632	23° 32' 52.736" N	81° 40' 23.524" E
467	P60		568542.0726	2604116.988	23° 32' 45.360" N	81° 40' 17.559" E
468	P61		568360.4733	2603897.939	23° 32' 38.265" N	81° 40' 11.118" E
469	P62		568224.1862	2603647.893	23° 32' 30.155" N	81° 40' 6.270" E

DGPS Survey Points						
Manendragarh Division (Segment-II)						
Sr.No.	Point ID	Patch No.	UTM Coordinates		Geographical Coordinates	
			Easting (m)	Northing (m)	Longitude "E"	Latitude "N"
1	P1	Patch-1_1	568725.597800	2642010.798910	81° 40' 30.366" E	23° 53' 17.456" N
2	P2	Patch-1_1	568491.620700	2641944.441660	81° 40' 22.081" E	23° 53' 15.334" N
3	P3	Patch-1_1	568433.685346	2641746.180590	81° 40' 19.999" E	23° 53' 8.897" N
4	P4	Patch-1_1	568302.880868	2641749.657490	81° 40' 15.375" E	23° 53' 9.030" N
5	P5	Patch-1_1	568074.623704	2641850.391200	81° 40' 7.320" E	23° 53' 12.341" N
6	P6	Patch-1_1	567895.587354	2642021.904600	81° 40' 1.018" E	23° 53' 17.945" N
7	P7	Patch-1_1	567788.065279	2642237.172490	81° 39' 57.251" E	23° 53' 24.961" N
8	P8	Patch-1_1	567655.973181	2642449.363450	81° 39' 52.616" E	23° 53' 31.880" N
9	P9	Patch-1_2	567203.641041	2643143.879220	81° 39' 36.735" E	23° 53' 54.531" N
10	P10	Patch-1_2	566939.598263	2643314.056280	81° 39' 27.425" E	23° 54' 0.104" N
11	P11	Patch-1_2	566623.547855	2643590.993250	81° 39' 16.293" E	23° 54' 9.156" N
12	P12	Patch-1_2	566290.825710	2643808.179070	81° 39' 4.562" E	23° 54' 16.268" N
13	P13	Patch-1_3	565687.601897	2643779.932200	81° 38' 43.223" E	23° 54' 15.439" N
14	P14	Patch-1_3	565691.360904	2643366.236340	81° 38' 43.290" E	23° 54' 1.988" N
15	P15	Patch-1_3	565377.990906	2643015.380370	81° 38' 32.151" E	23° 53' 50.626" N
16	P16	Patch-1_3	565645.931563	2642590.885230	81° 38' 41.558" E	23° 53' 36.784" N
17	P17	Patch-1_3	565689.527268	2642344.951130	81° 38' 43.060" E	23° 53' 28.781" N
18	P18	Patch-1_3	565823.340068	2642160.013350	81° 38' 47.762" E	23° 53' 22.748" N
19	P19	Patch-1_3	566033.294324	2642033.950730	81° 38' 55.166" E	23° 53' 18.618" N
20	P20	Patch-1_3	566121.372718	2641800.006620	81° 38' 58.243" E	23° 53' 10.998" N
21	P21	Patch-1_3	566133.506961	2641554.213200	81° 38' 58.632" E	23° 53' 3.004" N
22	P22	Patch-1_3	566043.752832	2641330.041680	81° 38' 55.422" E	23° 52' 55.729" N
23	P23	Patch-1_3	566121.391717	2641141.711220	81° 38' 58.136" E	23° 52' 49.594" N
24	P24	Patch-1_3	566281.385220	2640956.831450	81° 39' 3.764" E	23° 52' 43.559" N
25	P25	Patch-1_3	566277.879161	2640718.947750	81° 39' 3.601" E	23° 52' 35.825" N
26	P26	Patch-1_3	566113.258087	2640540.687520	81° 38' 57.751" E	23° 52' 30.053" N
27	P27	Patch-1_3	565983.310510	2640328.358860	81° 38' 53.122" E	23° 52' 23.169" N
28	P28	Patch-1_3	565839.111973	2640124.140310	81° 38' 47.991" E	23° 52' 16.550" N
29	P29	Patch-1_3	565773.239270	2639885.857980	81° 38' 45.623" E	23° 52' 8.812" N
30	P30	Patch-1_3	565634.894934	2639733.457420	81° 38' 40.707" E	23° 52' 3.877" N
31	P31	Patch-1_3	565646.698245	2639648.069170	81° 38' 41.111" E	23° 52' 1.099" N
32	P32	Patch-1_4	565930.013439	2639170.311620	81° 38' 51.051" E	23° 51' 45.523" N
33	P33	Patch-1_4	565953.169359	2639153.382360	81° 38' 51.867" E	23° 51' 44.969" N
34	P34	Patch-1_4	565975.850014	2639135.815000	81° 38' 52.666" E	23° 51' 44.395" N
35	P35	Patch-1_5	566676.906152	2638566.669580	81° 39' 17.358" E	23° 51' 25.784" N
36	P36	Patch-1_5	566703.392061	2638558.440980	81° 39' 18.293" E	23° 51' 25.513" N
37	P37	Patch-1_5	566729.877970	2638550.212380	81° 39' 19.228" E	23° 51' 25.241" N
38	P38	Patch-1_6	567169.855149	2638412.003400	81° 39' 34.760" E	23° 51' 20.681" N
39	P39	Patch-1_6	567203.828340	2638401.019900	81° 39' 35.959" E	23° 51' 20.319" N
40	P40	Patch-1_6	567237.801532	2638390.036390	81° 39' 37.158" E	23° 51' 19.956" N
41	P41	Patch-1_7	567273.664795	2638378.441990	81° 39' 38.424" E	23° 51' 19.574" N
42	P42	Patch-1_7	567308.295797	2638367.246070	81° 39' 39.647" E	23° 51' 19.205" N

DGPS Survey Points						
Manendragarh Division (Segment-II)						
Sr.No.	Point ID	Patch No.	UTM Coordinates		Geographical Coordinates	
			Easting (m)	Northing (m)	Longitude "E"	Latitude "N"
43	P43	Patch-1_8	567487.443064	2638313.038060	81° 39' 45.971" E	23° 51' 17.415" N
44	P44	Patch-1_8	567726.893139	2638241.179440	81° 39' 54.424" E	23° 51' 15.042" N
45	P45	Patch-1_8	567911.164017	2638104.591850	81° 40' 0.916" E	23° 51' 10.573" N
46	P46	Patch-1_8	568025.473037	2637902.577090	81° 40' 4.923" E	23° 51' 3.987" N
47	P47	Patch-1_8	568255.855981	2637806.574900	81° 40' 13.052" E	23° 51' 0.830" N
48	P48	Patch-1_8	568466.897457	2637675.191630	81° 40' 20.490" E	23° 50' 56.525" N
49	P49	Patch-1_8	568675.875684	2637511.471320	81° 40' 27.850" E	23° 50' 51.170" N
50	P50	Patch-1_9	568881.580485	2637347.234760	81° 40' 35.094" E	23° 50' 45.798" N
51	P51	Patch-1_9	568930.147656	2637308.500560	81° 40' 36.805" E	23° 50' 44.531" N
52	P52	Patch-1_10	569118.376707	2637241.372300	81° 40' 43.447" E	23° 50' 42.319" N
53	P53	Patch-1_10	569156.762170	2637231.770900	81° 40' 44.802" E	23° 50' 42.001" N
54	P54	Patch-1_11	569325.532449	2637191.375340	81° 40' 50.761" E	23° 50' 40.661" N
55	P55	Patch-1_11	569373.691609	2637180.067950	81° 40' 52.462" E	23° 50' 40.286" N
56	P56	Patch-1_11	569421.850769	2637168.760560	81° 40' 54.162" E	23° 50' 39.911" N
57	P1	Patch-2_1	569585.061829	2636991.999410	81° 40' 59.902" E	23° 50' 34.138" N
58	P2	Patch-2_1	569581.657038	2637018.408400	81° 40' 59.786" E	23° 50' 34.997" N
59	P3	Patch-2_2	569889.603102	2638017.659330	81° 41' 10.843" E	23° 51' 7.439" N
60	P4	Patch-2_2	570003.862211	2638276.934150	81° 41' 14.926" E	23° 51' 15.851" N
61	P5	Patch-2_2	570030.297149	2638528.548370	81° 41' 15.904" E	23° 51' 24.028" N
62	P6	Patch-2_2	570134.380300	2638684.140840	81° 41' 19.610" E	23° 51' 29.070" N
63	P7	Patch-2_2	570291.217057	2638661.117940	81° 41' 25.151" E	23° 51' 28.297" N
64	P8	Patch-2_2	570540.060349	2638776.265010	81° 41' 33.968" E	23° 51' 32.002" N
65	P9	Patch-2_2	570775.023088	2638813.660250	81° 41' 42.282" E	23° 51' 33.180" N
66	P10	Patch-2_2	570998.064991	2638926.771060	81° 41' 50.187" E	23° 51' 36.822" N
67	P11	Patch-2_2	571212.925479	2639067.404750	81° 41' 57.807" E	23° 51' 41.360" N
68	P12	Patch-2_3	572803.731479	2638136.518960	81° 42' 53.882" E	23° 51' 10.835" N
69	P13	Patch-2_3	572839.364822	2638125.270980	81° 42' 55.140" E	23° 51' 10.463" N
70	P14	Patch-2_4	572845.286701	2638121.366500	81° 42' 55.349" E	23° 51' 10.335" N
71	P15	Patch-2_4	572869.064604	2638100.295690	81° 42' 56.185" E	23° 51' 9.646" N
72	P16	Patch-2_4	572896.280499	2638083.814310	81° 42' 57.145" E	23° 51' 9.106" N
73	P17	Patch-2_5	573024.751938	2637998.387250	81° 43' 1.671" E	23° 51' 6.307" N
74	P18	Patch-2_5	573083.924171	2637966.861810	81° 43' 3.757" E	23° 51' 5.273" N
75	P19	Patch-2_5	573143.607255	2637936.338050	81° 43' 5.862" E	23° 51' 4.270" N
76	P20	Patch-2_6	573319.620529	2637621.396140	81° 43' 12.027" E	23° 50' 54.001" N
77	P21	Patch-2_6	573428.453521	2637415.624010	81° 43' 15.837" E	23° 50' 47.293" N
78	P22	Patch-2_6	573443.231515	2637380.202650	81° 43' 16.354" E	23° 50' 46.138" N
79	P23	Patch-2_7	573536.732993	2637075.799800	81° 43' 19.604" E	23° 50' 36.225" N

DGPS Survey Points

Manendragarh Division (Segment-II)

Sr.No.	Point ID	Patch No.	UTM Coordinates		Geographical Coordinates	
			Easting (m)	Northing (m)	Longitude "E"	Latitude "N"
80	P24	Patch-2_7	573550.466947	2636989.085800	81° 43' 20.074" E	23° 50' 33.404" N
81	P25	Patch-2_7	573586.264789	2636911.761380	81° 43' 21.325" E	23° 50' 30.884" N
82	P26	Patch-2_8	573666.256637	2636830.439620	81° 43' 24.138" E	23° 50' 28.226" N
83	P27	Patch-2_8	573790.799000	2636627.495330	81° 43' 28.504" E	23° 50' 21.607" N
84	P28	Patch-2_8	573957.346900	2636550.609450	81° 43' 34.377" E	23° 50' 19.079" N
85	P29	Patch-2_9	574459.881739	2635713.588930	81° 43' 51.988" E	23° 49' 51.780" N
86	P30	Patch-2_9	574657.029783	2635507.212480	81° 43' 58.918" E	23° 49' 45.037" N
87	P31	Patch-2_9	574980.919819	2635550.271390	81° 44' 10.374" E	23° 49' 46.382" N
88	P32	Patch-2_9	575182.321947	2635796.988350	81° 44' 17.538" E	23° 49' 54.370" N
89	P33	Patch-2_9	575209.749640	2635961.002250	81° 44' 18.538" E	23° 49' 59.698" N
90	P34	Patch-2_9	575414.259481	2636045.229260	81° 44' 25.782" E	23° 50' 2.402" N
91	P35	Patch-2_9	575559.209298	2636119.277290	81° 44' 30.919" E	23° 50' 4.785" N
92	P1	Patch-3_1	580688.494670	2622740.648540	81° 47' 29.586" E	23° 42' 48.889" N
93	P2	Patch-3_1	580725.823205	2622753.361010	81° 47' 30.906" E	23° 42' 49.296" N
94	P3	Patch-3_1	580763.141224	2622766.298380	81° 47' 32.227" E	23° 42' 49.710" N
95	P4	Patch-3_2	580841.120625	2622779.503470	81° 47' 34.983" E	23° 42' 50.125" N
96	P5	Patch-3_2	580872.938927	2622783.753010	81° 47' 36.108" E	23° 42' 50.257" N
97	P6	Patch-3_3	581192.969333	2622792.950950	81° 47' 47.411" E	23° 42' 50.498" N
98	P7	Patch-3_3	581228.386917	2622788.538420	81° 47' 48.661" E	23° 42' 50.348" N
99	P8	Patch-3_4	581246.386737	2622786.890860	81° 47' 49.296" E	23° 42' 50.292" N
100	P9	Patch-3_4	581292.648469	2622773.674310	81° 47' 50.927" E	23° 42' 49.853" N
101	P10	Patch-3_4	581339.131192	2622762.042340	81° 47' 52.566" E	23° 42' 49.467" N
102	P11	Patch-3_5	581798.638859	2622871.651400	81° 48' 8.815" E	23° 42' 52.947" N
103	P12	Patch-3_5	582040.106112	2622934.196830	81° 48' 17.354" E	23° 42' 54.936" N
104	P13	Patch-3_5	582287.455195	2622969.765880	81° 48' 26.096" E	23° 42' 56.047" N
105	P14	Patch-3_5	582535.348694	2622939.392570	81° 48' 34.844" E	23° 42' 55.014" N
106	P15	Patch-3_5	582778.803822	2622884.013480	81° 48' 43.430" E	23° 42' 53.168" N
107	P16	Patch-3_5	582991.464559	2622763.412010	81° 48' 50.915" E	23° 42' 49.207" N
108	P17	Patch-3_5	583209.240191	2622646.068420	81° 48' 58.582" E	23° 42' 45.352" N
109	P18	Patch-3_5	583429.226299	2622593.026530	81° 49' 6.340" E	23° 42' 43.586" N
110	P19	Patch-3_5	583497.868645	2622825.330740	81° 49' 8.811" E	23° 42' 51.126" N
111	P20	Patch-3_5	583702.482098	2622903.525100	81° 49' 16.052" E	23° 42' 53.630" N
112	P21	Patch-3_5	583950.217845	2622934.025840	81° 49' 24.807" E	23° 42' 54.576" N
113	P22	Patch-3_5	584179.498836	2623031.751360	81° 49' 32.924" E	23° 42' 57.710" N
114	P23	Patch-3_5	584383.722133	2623174.391970	81° 49' 40.165" E	23° 43' 2.309" N
115	P24	Patch-3_5	584624.953677	2623225.621570	81° 49' 48.694" E	23° 43' 3.929" N
116	P25	Patch-3_5	584860.204931	2623309.817030	81° 49' 57.019" E	23° 43' 6.622" N
117	P26	Patch-3_5	585107.427559	2623322.925590	81° 50' 5.752" E	23° 43' 7.001" N
118	P27	Patch-3_5	585333.783152	2623411.961300	81° 50' 13.764" E	23° 43' 9.853" N
119	P28	Patch-3_5	585471.678772	2623459.314780	81° 50' 18.644" E	23° 43' 11.366" N

DGPS Survey Points

Manendragarh Division (Segment-II)

Sr.No.	Point ID	Patch No.	UTM Coordinates		Geographical Coordinates	
			Easting (m)	Northing (m)	Longitude "E"	Latitude "N"
120	P29	Patch-3_6	585874.474863	2623454.150740	81° 50' 32.867" E	23° 43' 11.121" N
121	P30	Patch-3_6	585902.133478	2623446.102940	81° 50' 33.842" E	23° 43' 10.854" N
122	P31	Patch-3_6	585929.473903	2623437.012840	81° 50' 34.806" E	23° 43' 10.553" N
123	P32	Patch-3_7	588439.768818	2623393.657510	81° 52' 3.446" E	23° 43' 8.653" N
124	P33	Patch-3_7	588686.786650	2623409.411140	81° 52' 12.173" E	23° 43' 9.117" N
125	P34	Patch-3_7	588900.699464	2623280.949910	81° 52' 19.699" E	23° 43' 4.897" N
126	P35	Patch-3_7	589097.888175	2623400.093310	81° 52' 26.688" E	23° 43' 8.732" N
127	P36	Patch-3_7	589347.802855	2623402.724950	81° 52' 35.514" E	23° 43' 8.767" N
128	P37	Patch-3_7	589597.796053	2623403.669020	81° 52' 44.343" E	23° 43' 8.748" N
129	P38	Patch-3_7	589846.326530	2623389.653080	81° 52' 53.116" E	23° 43' 8.242" N
130	P39	Patch-3_7	590086.615905	2623320.744630	81° 53' 1.587" E	23° 43' 5.954" N
131	P40	Patch-3_7	590327.125728	2623252.583220	81° 53' 10.065" E	23° 43' 3.689" N
132	P41	Patch-3_7	590687.161066	2623152.325840	81° 53' 22.757" E	23° 43' 0.356" N
133	P42	Patch-3_7	590981.918887	2623165.648850	81° 53' 33.169" E	23° 43' 0.729" N
134	P43	Patch-3_7	591231.588701	2623178.097980	81° 53' 41.988" E	23° 43' 1.083" N
135	P44	Patch-3_7	591481.160411	2623192.684930	81° 53' 50.805" E	23° 43' 1.506" N
136	P45	Patch-3_7	591730.906237	2623196.714570	81° 53' 59.625" E	23° 43' 1.586" N
137	P46	Patch-3_7	591980.497043	2623182.505550	81° 54' 8.436" E	23° 43' 1.073" N
138	P47	Patch-3_7	592111.090981	2623175.187370	81° 54' 13.046" E	23° 43' 0.808" N
139	P48	Patch-3_8	595179.685193	2622602.658680	81° 56' 1.274" E	23° 42' 41.550" N
140	P49	Patch-3_8	595391.491481	2622475.981150	81° 56' 8.724" E	23° 42' 37.386" N
141	P50	Patch-3_8	595628.622427	2622398.461120	81° 56' 17.079" E	23° 42' 34.815" N
142	P51	Patch-3_8	595853.036912	2622295.739880	81° 56' 24.980" E	23° 42' 31.427" N
143	P52	Patch-3_8	596026.009371	2622115.273550	81° 56' 31.045" E	23° 42' 25.522" N
144	P53	Patch-3_8	596242.949282	2621993.585000	81° 56' 38.677" E	23° 42' 21.519" N
145	P54	Patch-3_8	596466.444275	2621881.584220	81° 56' 46.542" E	23° 42' 17.829" N
146	P55	Patch-3_8	596688.342064	2621766.534720	81° 56' 54.350" E	23° 42' 14.041" N
147	P56	Patch-3_8	596909.154953	2621649.351570	81° 57' 2.120" E	23° 42' 10.183" N
148	P57	Patch-3_8	597131.531070	2621535.154300	81° 57' 9.944" E	23° 42' 6.422" N
149	P58	Patch-3_8	597361.440973	2621467.256550	81° 57' 18.046" E	23° 42' 4.164" N
150	P59	Patch-3_8	597581.286823	2621434.661630	81° 57' 25.801" E	23° 42' 3.057" N
151	P60	Patch-3_8	597901.507643	2621377.937680	81° 57' 37.094" E	23° 42' 1.142" N
152	P61	Patch-3_8	598146.868632	2621330.020250	81° 57' 45.746" E	23° 41' 59.531" N
153	P62	Patch-3_8	598392.199872	2621310.232200	81° 57' 54.403" E	23° 41' 58.833" N
154	P63	Patch-3_8	598634.927232	2621370.091250	81° 58' 2.987" E	23° 42' 0.726" N
155	P64	Patch-3_8	598877.090310	2621432.163080	81° 58' 11.553" E	23° 42' 2.691" N
156	P65	Patch-3_8	599119.708020	2621492.441170	81° 58' 20.134" E	23° 42' 4.597" N
157	P66	Patch-3_8	599346.111914	2621519.868330	81° 58' 28.134" E	23° 42' 5.438" N
158	P67	Patch-3_9	601513.186494	2621943.233150	81° 59' 44.754" E	23° 42' 18.716" N
159	P68	Patch-3_9	601753.368518	2622012.002460	81° 59' 53.252" E	23° 42' 20.897" N
160	P69	Patch-3_9	602000.819613	2622041.601100	82° 0' 1.996" E	23° 42' 21.803" N
161	P70	Patch-3_9	602087.493817	2622042.331810	82° 0' 5.057" E	23° 42' 21.807" N
162	P71	Patch-3_10	602387.817676	2622014.152860	82° 0' 15.654" E	23° 42' 20.822" N
163	P72	Patch-3_10	602749.887768	2621944.312430	82° 0' 28.421" E	23° 42' 18.468" N

DGPS Survey Points

Manendragarh Division (Segment-II)

Sr.No.	Point ID	Patch No.	UTM Coordinates		Geographical Coordinates	
			Easting (m)	Northing (m)	Longitude "E"	Latitude "N"
164	P73	Patch-3_10	602995.743873	2621915.079630	82° 0' 37.094" E	23° 42' 17.461" N
165	P74	Patch-3_10	603245.208496	2621914.222050	82° 0' 45.902" E	23° 42' 17.376" N
166	P75	Patch-3_10	603494.292062	2621893.801100	82° 0' 54.692" E	23° 42' 16.654" N
167	P76	Patch-3_10	603730.171609	2621816.164950	82° 1' 3.001" E	23° 42' 14.075" N
168	P77	Patch-3_10	603967.530520	2621839.339950	82° 1' 11.388" E	23° 42' 14.774" N
169	P78	Patch-3_10	604172.208435	2621959.955760	82° 1' 18.645" E	23° 42' 18.647" N
170	P79	Patch-3_10	604327.998199	2622138.246440	82° 1' 24.191" E	23° 42' 24.408" N
171	P80	Patch-3_10	604458.236259	2622337.015680	82° 1' 28.840" E	23° 42' 30.840" N
172	P81	Patch-3_10	604507.266581	2622369.796520	82° 1' 30.580" E	23° 42' 31.894" N
173	P1	Patch-4_1	610532.040572	2591751.043760	82° 4' 55.146" E	23° 25' 54.961" N
174	P2	Patch-4_1	610541.495028	2592181.731210	82° 4' 55.593" E	23° 26' 8.961" N
175	P3	Patch-4_1	610452.653166	2592650.137220	82° 4' 52.586" E	23° 26' 24.212" N
176	P4	Patch-4_1	610115.938255	2592874.346370	82° 4' 40.780" E	23° 26' 31.584" N
177	P5	Patch-4_1	610087.303874	2593178.550270	82° 4' 39.852" E	23° 26' 41.481" N
178	P6	Patch-4_1	610018.378865	2593678.147000	82° 4' 37.555" E	23° 26' 57.741" N
179	P7	Patch-4_2	609375.931363	2594700.507120	82° 4' 15.183" E	23° 27' 31.137" N
180	P8	Patch-4_2	609138.387985	2594653.161860	82° 4' 6.799" E	23° 27' 29.655" N
181	P9	Patch-4_2	608904.707160	2594734.173690	82° 3' 58.585" E	23° 27' 32.345" N
182	P10	Patch-4_2	608667.908624	2594696.266440	82° 3' 50.229" E	23° 27' 31.170" N
183	P11	Patch-4_2	608448.029981	2594580.700020	82° 3' 42.450" E	23° 27' 27.465" N
184	P12	Patch-4_2	608213.420878	2594499.045270	82° 3' 34.161" E	23° 27' 24.867" N
185	P13	Patch-4_2	607964.667632	2594478.985940	82° 3' 25.389" E	23° 27' 24.274" N
186	P14	Patch-4_2	607902.266490	2594674.153060	82° 3' 23.241" E	23° 27' 30.634" N
187	P15	Patch-4_2	607936.370322	2594913.905570	82° 3' 24.505" E	23° 27' 38.421" N
188	P16	Patch-4_2	608045.999341	2595137.423930	82° 3' 28.426" E	23° 27' 45.662" N
189	P17	Patch-4_2	608205.466810	2595328.192180	82° 3' 34.096" E	23° 27' 51.827" N
190	P18	Patch-4_2	608380.672687	2595492.347960	82° 3' 40.313" E	23° 27' 57.122" N
191	P19	Patch-4_2	608334.927654	2595736.326650	82° 3' 38.765" E	23° 28' 5.065" N
192	P20	Patch-4_2	608266.402776	2595976.375790	82° 3' 36.412" E	23° 28' 12.886" N
193	P21	Patch-4_2	608231.407743	2596221.300660	82° 3' 35.242" E	23° 28' 20.858" N
194	P22	Patch-4_2	608360.267724	2596433.459010	82° 3' 39.839" E	23° 28' 27.725" N
195	P23	Patch-4_2	608513.182072	2596630.209530	82° 3' 45.280" E	23° 28' 34.085" N
196	P24	Patch-4_2	608576.758203	2596870.296620	82° 3' 47.583" E	23° 28' 41.876" N
197	P25	Patch-4_2	608687.283738	2597090.512050	82° 3' 51.537" E	23° 28' 49.009" N
198	P26	Patch-4_2	608462.718203	2597001.305640	82° 3' 43.598" E	23° 28' 46.163" N
199	P27	Patch-4_2	608444.560118	2597078.569400	82° 3' 42.978" E	23° 28' 48.679" N
200	P28	Patch-4_2	608591.405595	2597269.877040	82° 3' 48.204" E	23° 28' 54.864" N
201	P29	Patch-4_2	608805.899173	2597314.249090	82° 3' 55.776" E	23° 28' 56.255" N
202	P30	Patch-4_2	608846.953677	2597538.961060	82° 3' 57.282" E	23° 29' 3.551" N
203	P31	Patch-4_2	608919.030778	2597776.183320	82° 3' 59.885" E	23° 29' 11.246" N
204	P32	Patch-4_2	608919.389488	2598018.875520	82° 3' 59.961" E	23° 29' 19.137" N
205	P33	Patch-4_2	609010.102239	2598247.796950	82° 4' 3.218" E	23° 29' 26.558" N
206	P34	Patch-4_2	609180.437038	2598429.436190	82° 4' 9.270" E	23° 29' 32.422" N
207	P35	Patch-4_2	609324.245098	2598623.784170	82° 4' 14.391" E	23° 29' 38.706" N
208	P36	Patch-4_2	609206.782057	2598792.563610	82° 4' 10.294" E	23° 29' 44.222" N
209	P37	Patch-4_2	609208.959674	2598948.448080	82° 4' 10.412" E	23° 29' 49.290" N

DGPS Survey Points						
Manendragarh Division (Segment-II)						
Sr.No.	Point ID	Patch No.	UTM Coordinates		Geographical Coordinates	
			Easting (m)	Northing (m)	Longitude "E"	Latitude "N"
210	P38	Patch-4_2	609195.204540	2599186.274820	82° 4' 9.989" E	23° 29' 57.025" N
211	P39	Patch-4_2	609057.541405	2599390.752710	82° 4' 5.190" E	23° 30' 3.707" N
212	P40	Patch-4_2	609071.826460	2599639.365840	82° 4' 5.759" E	23° 30' 11.786" N
213	P41	Patch-4_2	609085.905464	2599886.122640	82° 4' 6.320" E	23° 30' 19.806" N
214	P42	Patch-4_2	608941.637499	2600089.613920	82° 4' 1.287" E	23° 30' 26.457" N
215	P43	Patch-4_2	608857.509670	2600324.190880	82° 3' 58.382" E	23° 30' 34.104" N
216	P44	Patch-4_2	608794.234367	2600565.799700	82° 3' 56.215" E	23° 30' 41.974" N
217	P45	Patch-4_2	608735.208328	2600806.795410	82° 3' 54.197" E	23° 30' 49.824" N
218	P46	Patch-4_2	608816.348439	2601032.097980	82° 3' 57.116" E	23° 30' 57.129" N
219	P47	Patch-4_2	608951.093882	2601239.531140	82° 4' 1.922" E	23° 31' 3.841" N
220	P48	Patch-4_2	609110.521611	2601428.896470	82° 4' 7.592" E	23° 31' 9.959" N
221	P49	Patch-4_2	609157.261188	2601670.163800	82° 4' 9.304" E	23° 31' 17.792" N
222	P50	Patch-4_2	609316.893325	2601843.772600	82° 4' 14.978" E	23° 31' 23.398" N
223	P51	Patch-4_2	609520.147516	2601975.548730	82° 4' 22.179" E	23° 31' 27.633" N
224	P52	Patch-4_2	609749.653106	2602069.473760	82° 4' 30.296" E	23° 31' 30.631" N
225	P53	Patch-4_2	609993.274621	2602051.323630	82° 4' 38.882" E	23° 31' 29.981" N
226	P54	Patch-4_2	610215.565418	2602137.349690	82° 4' 46.742" E	23° 31' 32.724" N
227	P55	Patch-4_2	610441.860347	2602225.298150	82° 4' 54.745" E	23° 31' 35.528" N
228	P56	Patch-4_2	610691.403820	2602223.635270	82° 5' 3.543" E	23° 31' 35.413" N
229	P57	Patch-4_2	610836.713785	2602389.904220	82° 5' 8.711" E	23° 31' 40.783" N
230	P58	Patch-4_2	610766.257385	2602622.775540	82° 5' 6.289" E	23° 31' 48.371" N
231	P59	Patch-4_2	610685.251800	2602850.596250	82° 5' 3.494" E	23° 31' 55.798" N
232	P60	Patch-4_2	610680.841871	2603057.454510	82° 5' 3.393" E	23° 32' 2.525" N
233	P61	Patch-4_2	610861.712320	2603229.737290	82° 5' 9.817" E	23° 32' 8.082" N
234	P62	Patch-4_2	611106.150678	2603248.788560	82° 5' 18.442" E	23° 32' 8.641" N
235	P63	Patch-4_2	611347.520878	2603271.705290	82° 5' 26.959" E	23° 32' 9.326" N
236	P64	Patch-4_2	611583.875929	2603314.285010	82° 5' 35.305" E	23° 32' 10.652" N
237	P65	Patch-4_2	611727.005600	2603475.680330	82° 5' 40.396" E	23° 32' 15.864" N
238	P66	Patch-4_2	611917.412970	2603624.295520	82° 5' 47.150" E	23° 32' 20.649" N
239	P67	Patch-4_2	612093.218164	2603780.345500	82° 5' 53.392" E	23° 32' 25.678" N
240	P68	Patch-4_2	612212.666346	2603997.596810	82° 5' 57.663" E	23° 32' 32.712" N
241	P69	Patch-4_2	612440.821559	2603944.816600	82° 6' 5.694" E	23° 32' 30.939" N
242	P70	Patch-4_2	612673.083790	2603863.494360	82° 6' 13.863" E	23° 32' 28.237" N
243	P71	Patch-4_2	612916.110806	2603838.631860	82° 6' 22.426" E	23° 32' 27.368" N
244	P72	Patch-4_2	613154.943681	2603856.201080	82° 6' 30.853" E	23° 32' 27.879" N
245	P73	Patch-4_2	613360.102240	2603717.811650	82° 6' 38.050" E	23° 32' 23.328" N
246	P74	Patch-4_2	613593.960214	2603688.881480	82° 6' 46.288" E	23° 32' 22.329" N
247	P75	Patch-4_2	613840.361192	2603693.079150	82° 6' 54.978" E	23° 32' 22.403" N
248	P76	Patch-4_2	614083.184598	2603664.560850	82° 7' 3.533" E	23° 32' 21.414" N
249	P77	Patch-4_2	614298.704396	2603646.425340	82° 7' 11.128" E	23° 32' 20.770" N
250	P78	Patch-4_2	614417.102611	2603546.055920	82° 7' 15.276" E	23° 32' 17.477" N
251	P79	Patch-4_3	615082.943624	2603083.820070	82° 7' 38.627" E	23° 32' 2.279" N
252	P80	Patch-4_3	615196.582686	2603006.319880	82° 7' 42.613" E	23° 31' 59.730" N
253	P81	Patch-4_3	615418.898242	2602888.153230	82° 7' 50.419" E	23° 31' 55.831" N
254	P82	Patch-4_3	615532.570017	2602701.591140	82° 7' 54.375" E	23° 31' 49.737" N
255	P83	Patch-4_3	615521.005935	2602468.746210	82° 7' 53.903" E	23° 31' 42.170" N
256	P84	Patch-4_3	615587.778572	2602260.487320	82° 7' 56.199" E	23° 31' 35.382" N

DGPS Survey Points

Manendragarh Division (Segment-II)

Sr.No.	Point ID	Patch No.	UTM Coordinates		Geographical Coordinates	
			Easting (m)	Northing (m)	Longitude "E"	Latitude "N"
257	P85	Patch-4_3	615757.549978	2602126.664930	82° 8' 2.148" E	23° 31' 30.987" N
258	P86	Patch-4_3	615932.392979	2602044.871120	82° 8' 8.290" E	23° 31' 28.283" N
259	P87	Patch-4_3	615976.419166	2601919.339100	82° 8' 9.807" E	23° 31' 24.190" N
260	P88	Patch-4_3	615998.945802	2601909.557320	82° 8' 10.599" E	23° 31' 23.867" N
261	P89	Patch-4_3	616206.441467	2601773.133360	82° 8' 17.877" E	23° 31' 19.378" N
262	P90	Patch-4_3	616392.783293	2601663.034720	82° 8' 24.416" E	23° 31' 15.750" N
263	P91	Patch-4_3	616548.081293	2601478.737990	82° 8' 29.840" E	23° 31' 9.718" N
264	P92	Patch-4_3	616790.766256	2601507.522590	82° 8' 38.404" E	23° 31' 10.591" N
265	P93	Patch-4_3	617010.761246	2601623.688160	82° 8' 46.194" E	23° 31' 14.311" N
266	P94	Patch-4_3	617165.013132	2601798.862700	82° 8' 51.682" E	23° 31' 19.966" N
267	P1	Patch-5_1	607416.551605	2589611.747630	82° 3' 4.821" E	23° 24' 46.155" N
268	P2	Patch-5_1	607449.114928	2589610.434290	82° 3' 5.968" E	23° 24' 46.105" N
269	P3	Patch-5_2	607595.640638	2589592.492310	82° 3' 11.125" E	23° 24' 45.487" N
270	P4	Patch-5_2	607625.111039	2589588.318170	82° 3' 12.162" E	23° 24' 45.344" N
271	P5	Patch-5_2	607654.066865	2589581.700560	82° 3' 13.181" E	23° 24' 45.122" N
272	P6	Patch-5_3	607770.531329	2589482.568950	82° 3' 17.258" E	23° 24' 41.871" N
273	P7	Patch-5_3	607795.586901	2589439.844740	82° 3' 18.130" E	23° 24' 40.476" N
274	P8	Patch-5_3	607810.388407	2589393.026280	82° 3' 18.639" E	23° 24' 38.951" N
275	P9	Patch-5_4	607784.040735	2589251.353440	82° 3' 17.675" E	23° 24' 34.351" N
276	P10	Patch-5_4	607780.700337	2589240.611430	82° 3' 17.554" E	23° 24' 34.002" N
277	P11	Patch-5_5	607735.392558	2588819.900650	82° 3' 15.850" E	23° 24' 20.334" N
278	P12	Patch-5_5	607771.977127	2588788.688300	82° 3' 17.130" E	23° 24' 19.311" N
279	P13	Patch-5_5	607809.085140	2588758.057630	82° 3' 18.430" E	23° 24' 18.306" N
280	P14	Patch-5_6	607874.349679	2588615.237680	82° 3' 20.692" E	23° 24' 13.647" N
281	P15	Patch-5_6	607813.099708	2588499.759660	82° 3' 18.505" E	23° 24' 9.907" N
282	P16	Patch-5_6	607772.934172	2588379.396380	82° 3' 17.059" E	23° 24' 6.003" N
283	P17	Patch-5_7	607786.388298	2588237.128650	82° 3' 17.496" E	23° 24' 1.374" N
284	P18	Patch-5_7	607790.548689	2588211.280890	82° 3' 17.636" E	23° 24' 0.533" N
285	P19	Patch-5_8	607798.775803	2588160.666990	82° 3' 17.913" E	23° 23' 58.885" N
286	P20	Patch-5_8	607800.845723	2588148.475380	82° 3' 17.982" E	23° 23' 58.489" N
287	P21	Patch-5_9	607842.867191	2587897.959780	82° 3' 19.398" E	23° 23' 50.334" N
288	P22	Patch-5_9	607904.646333	2587707.869230	82° 3' 21.525" E	23° 23' 44.138" N
289	P23	Patch-5_9	607907.926251	2587698.458150	82° 3' 21.638" E	23° 23' 43.832" N
290	P24	Patch-5_10	608233.766920	2587250.102640	82° 3' 33.000" E	23° 23' 29.176" N
291	P25	Patch-5_10	608256.147899	2587227.352720	82° 3' 33.783" E	23° 23' 28.431" N
292	P26	Patch-5_11	608338.468248	2587151.193830	82° 3' 36.663" E	23° 23' 25.936" N
293	P27	Patch-5_11	608360.948731	2587136.560690	82° 3' 37.451" E	23° 23' 25.454" N

DGPS Survey Points						
Manendragarh Division (Segment-II)						
Sr.No.	Point ID	Patch No.	UTM Coordinates		Geographical Coordinates	
			Easting (m)	Northing (m)	Longitude "E"	Latitude "N"
294	P28	Patch-5_12	608417.179164	2587100.598550	82° 3' 39.422" E	23° 23' 24.272" N
295	P29	Patch-5_12	608424.979987	2587054.078660	82° 3' 39.685" E	23° 23' 22.757" N
296	P30	Patch-5_12	608424.106735	2587006.756360	82° 3' 39.642" E	23° 23' 21.219" N
297	P31	Patch-5_13	608163.351687	2586452.204230	82° 3' 30.314" E	23° 23' 3.251" N
298	P32	Patch-5_13	608069.375123	2586276.286290	82° 3' 26.958" E	23° 22' 57.554" N
299	P33	Patch-5_13	608000.748253	2586088.717420	82° 3' 24.493" E	23° 22' 51.472" N
300	P34	Patch-5_13	607974.702403	2585891.716420	82° 3' 23.525" E	23° 22' 45.073" N
301	P35	Patch-5_13	608033.773482	2585701.071720	82° 3' 25.556" E	23° 22' 38.860" N
302	P1	Patch-6_1	633240.756194	2590217.140200	82° 18' 14.764" E	23° 24' 58.979" N
303	P2	Patch-6_1	633173.153997	2589980.693350	82° 18' 12.307" E	23° 24' 51.312" N
304	P3	Patch-6_1	633229.705871	2589738.155480	82° 18' 14.222" E	23° 24' 43.410" N
305	P4	Patch-6_1	633314.563151	2589507.144030	82° 18' 17.138" E	23° 24' 35.875" N
306	P5	Patch-6_1	633362.580459	2589262.413290	82° 18' 18.751" E	23° 24' 27.905" N
307	P6	Patch-6_1	633461.007508	2589042.019700	82° 18' 22.148" E	23° 24' 20.711" N
308	P7	Patch-6_1	633433.945412	2588795.507070	82° 18' 21.116" E	23° 24' 12.704" N
309	P8	Patch-6_1	633373.690497	2588557.495680	82° 18' 18.918" E	23° 24' 4.984" N
310	P9	Patch-6_1	633245.481659	2588344.014520	82° 18' 14.334" E	23° 23' 58.082" N
311	P10	Patch-6_1	633132.849160	2588124.340680	82° 18' 10.297" E	23° 23' 50.973" N
312	P11	Patch-6_1	632997.555137	2587918.481220	82° 18' 5.466" E	23° 23' 44.320" N
313	P12	Patch-6_1	632861.985952	2587710.372290	82° 18' 0.624" E	23° 23' 37.594" N
314	P13	Patch-6_1	632729.538979	2587499.333780	82° 17' 55.893" E	23° 23' 30.772" N
315	P14	Patch-6_1	632577.359788	2587302.287580	82° 17' 50.470" E	23° 23' 24.411" N
316	P15	Patch-6_1	632460.581383	2587128.340250	82° 17' 46.302" E	23° 23' 18.790" N
317	P16	Patch-6_1	632211.859597	2587133.870850	82° 17' 37.544" E	23° 23' 19.042" N
318	P17	Patch-6_1	632002.460937	2587000.597930	82° 17' 30.126" E	23° 23' 14.770" N
319	P18	Patch-6_1	631777.144542	2586924.032000	82° 17' 22.166" E	23° 23' 12.347" N
320	P19	Patch-6_1	631589.497568	2586772.459620	82° 17' 15.510" E	23° 23' 7.473" N
321	P20	Patch-6_1	631342.427104	2586741.350490	82° 17' 6.798" E	23° 23' 6.533" N
322	P21	Patch-6_1	631092.703014	2586746.570390	82° 16' 58.004" E	23° 23' 6.775" N
323	P22	Patch-6_1	630849.938094	2586716.495930	82° 16' 49.445" E	23° 23' 5.868" N
324	P23	Patch-6_1	630619.002013	2586783.965580	82° 16' 41.332" E	23° 23' 8.128" N
325	P24	Patch-6_1	630445.546164	2586940.206220	82° 16' 35.272" E	23° 23' 13.257" N
326	P25	Patch-6_1	630276.653096	2587104.577160	82° 16' 29.374" E	23° 23' 18.650" N
327	P26	Patch-6_1	630108.979052	2587289.202950	82° 16' 23.526" E	23° 23' 24.700" N
328	P27	Patch-6_1	629929.785010	2587402.913540	82° 16' 17.250" E	23° 23' 28.448" N
329	P28	Patch-6_1	629764.551353	2587565.653410	82° 16' 11.480" E	23° 23' 33.786" N
330	P29	Patch-6_1	629630.433071	2587776.131180	82° 16' 6.822" E	23° 23' 40.667" N
331	P30	Patch-6_1	629477.218019	2587963.869580	82° 16' 1.483" E	23° 23' 46.815" N
332	P31	Patch-6_1	629307.300119	2588146.685850	82° 15' 55.554" E	23° 23' 52.807" N
333	P32	Patch-6_1	629276.408601	2588386.702420	82° 15' 54.541" E	23° 24' 0.619" N
334	P33	Patch-6_1	629278.135620	2588636.577320	82° 15' 54.679" E	23° 24' 8.742" N
335	P34	Patch-6_1	629214.383959	2588836.845590	82° 15' 52.495" E	23° 24' 15.271" N
336	P35	Patch-6_1	629059.109488	2589014.489970	82° 15' 47.080" E	23° 24' 21.090" N
337	P36	Patch-6_1	628875.954845	2589169.213750	82° 15' 40.676" E	23° 24' 26.173" N
338	P37	Patch-6_1	628806.728596	2589398.901960	82° 15' 38.308" E	23° 24' 33.660" N

DGPS Survey Points

Manendragarh Division (Segment-II)

Sr.No.	Point ID	Patch No.	UTM Coordinates		Geographical Coordinates	
			Easting (m)	Northing (m)	Longitude "E"	Latitude "N"
339	P38	Patch-6_1	628574.559625	2589383.835530	82° 15' 30.125" E	23° 24' 33.236" N
340	P39	Patch-6_1	628362.160564	2589260.973740	82° 15' 22.605" E	23° 24' 29.302" N
341	P40	Patch-6_1	628118.984173	2589312.732120	82° 15' 14.054" E	23° 24' 31.053" N
342	P41	Patch-6_1	627869.293625	2589301.002980	82° 15' 5.255" E	23° 24' 30.742" N
343	P42	Patch-6_1	627620.701666	2589318.581710	82° 14' 56.503" E	23° 24' 31.384" N
344	P43	Patch-6_1	627569.663343	2589080.732360	82° 14' 54.633" E	23° 24' 23.666" N
345	P44	Patch-6_1	627369.335702	2588952.386750	82° 14' 47.537" E	23° 24' 19.549" N
346	P45	Patch-6_1	627276.759233	2588721.896730	82° 14' 44.206" E	23° 24' 12.082" N
347	P46	Patch-6_1	627079.141490	2588592.606750	82° 14' 37.205" E	23° 24' 7.934" N
348	P47	Patch-6_1	626920.937736	2588537.552020	82° 14' 31.616" E	23° 24' 6.188" N
349	P1	Patch-7_1	630491.915061	2577415.374020	82° 16' 33.944" E	23° 18' 3.583" N
350	P2	Patch-7_1	630739.214179	2577446.368130	82° 16' 42.658" E	23° 18' 4.520" N
351	P3	Patch-7_1	630989.049664	2577450.526550	82° 16' 51.453" E	23° 18' 4.583" N
352	P4	Patch-7_1	631213.188539	2577542.594150	82° 16' 59.371" E	23° 18' 7.512" N
353	P5	Patch-7_1	631442.995019	2577546.656700	82° 17' 7.461" E	23° 18' 7.578" N
354	P6	Patch-7_1	631688.880288	2577509.703040	82° 17' 16.104" E	23° 18' 6.305" N
355	P7	Patch-7_1	631929.743148	2577573.920860	82° 17' 24.602" E	23° 18' 8.324" N
356	P8	Patch-7_1	632163.269683	2577662.967670	82° 17' 32.850" E	23° 18' 11.151" N
357	P9	Patch-7_1	632405.106399	2577708.473100	82° 17' 41.376" E	23° 18' 12.560" N
358	P10	Patch-7_1	632650.697923	2577668.806210	82° 17' 50.008" E	23° 18' 11.199" N
359	P11	Patch-7_1	632898.668565	2577637.123000	82° 17' 58.726" E	23° 18' 10.097" N
360	P12	Patch-7_1	633118.424001	2577528.531600	82° 18' 6.427" E	23° 18' 6.502" N
361	P13	Patch-7_1	633270.752111	2577330.513540	82° 18' 11.726" E	23° 18' 0.020" N
362	P14	Patch-7_1	633396.990553	2577116.861370	82° 18' 16.101" E	23° 17' 53.037" N
363	P15	Patch-7_1	633470.668712	2576879.618780	82° 18' 18.619" E	23° 17' 45.302" N
364	P16	Patch-7_1	633659.473734	2576720.964470	82° 18' 25.214" E	23° 17' 40.089" N
365	P17	Patch-7_1	633829.945418	2576680.945950	82° 18' 31.202" E	23° 17' 38.738" N
366	P1	Patch-8_1	635899.083444	2580983.496580	82° 19' 45.417" E	23° 19' 58.003" N
367	P2	Patch-8_1	635908.374233	2580937.467050	82° 19' 45.729" E	23° 19' 56.504" N
368	P3	Patch-8_2	635965.501093	2580657.330820	82° 19' 47.649" E	23° 19' 47.379" N
369	P4	Patch-8_2	636126.093072	2580584.926260	82° 19' 53.280" E	23° 19' 44.977" N
370	P5	Patch-8_2	636285.920516	2580451.173400	82° 19' 58.863" E	23° 19' 40.581" N
371	P6	Patch-8_2	636441.804768	2580273.220510	82° 20' 4.293" E	23° 19' 34.749" N
372	P7	Patch-8_2	636548.499346	2580072.105930	82° 20' 7.984" E	23° 19' 28.179" N
373	P8	Patch-8_2	636652.517146	2579849.158860	82° 20' 11.573" E	23° 19' 20.900" N
374	P9	Patch-8_2	636753.982079	2579635.270650	82° 20' 15.075" E	23° 19' 13.916" N
375	P10	Patch-8_2	636946.106779	2579489.160170	82° 20' 21.791" E	23° 19' 9.108" N
376	P11	Patch-8_2	637007.542220	2579325.482860	82° 20' 23.900" E	23° 19' 3.768" N
377	P12	Patch-8_2	637010.529243	2579165.651180	82° 20' 23.953" E	23° 18' 58.571" N
378	P13	Patch-8_2	636786.377544	2579148.419960	82° 20' 16.057" E	23° 18' 58.078" N
379	P14	Patch-8_2	636657.833100	2578951.328560	82° 20' 11.468" E	23° 18' 51.709" N
380	P15	Patch-8_2	636766.825236	2578758.795170	82° 20' 15.242" E	23° 18' 45.417" N
381	P16	Patch-8_2	636966.678647	2578811.518600	82° 20' 22.294" E	23° 18' 47.071" N
382	P17	Patch-8_2	636873.408154	2578593.144530	82° 20' 18.940" E	23° 18' 40.000" N
383	P18	Patch-8_2	636829.520458	2578379.069090	82° 20' 17.325" E	23° 18' 33.054" N

DGPS Survey Points						
Manendragarh Division (Segment-II)						
Sr.No.	Point ID	Patch No.	UTM Coordinates		Geographical Coordinates	
			Easting (m)	Northing (m)	Longitude "E"	Latitude "N"
384	P19	Patch-8_2	636889.801563	2578198.786840	82° 20' 19.389" E	23° 18' 27.174" N
385	P20	Patch-8_2	636883.608579	2577949.672200	82° 20' 19.090" E	23° 18' 19.078" N
386	P21	Patch-8_3	636807.956530	2577633.800390	82° 20' 16.324" E	23° 18' 8.831" N
387	P22	Patch-8_3	636808.001843	2577602.943800	82° 20' 16.316" E	23° 18' 7.828" N
388	P1	Patch-9_1	622844.112855	2566582.194930	82° 12' 1.597" E	23° 12' 13.499" N
389	P2	Patch-9_1	622896.920250	2566465.667940	82° 12' 3.421" E	23° 12' 9.697" N
390	P3	Patch-9_1	623042.017844	2566363.476810	82° 12' 8.494" E	23° 12' 6.335" N
391	P4	Patch-9_2	621833.091531	2561654.715750	82° 11' 24.618" E	23° 9' 33.565" N
392	P5	Patch-9_2	621762.462477	2561409.599220	82° 11' 22.064" E	23° 9' 25.614" N
393	P6	Patch-9_2	621773.642935	2561087.832450	82° 11' 22.365" E	23° 9' 15.149" N
394	P7	Patch-9_2	621670.863490	2560821.179160	82° 11' 18.675" E	23° 9' 6.507" N
395	P8	Patch-9_2	621469.926363	2560588.930820	82° 11' 11.543" E	23° 8' 59.009" N
396	P9	Patch-9_2	621263.679485	2560221.188270	82° 11' 4.187" E	23° 8' 47.107" N
397	P10	Patch-9_2	621248.267806	2559972.906320	82° 11' 3.574" E	23° 8' 39.039" N
398	P11	Patch-9_2	621133.361278	2559759.996220	82° 10' 59.473" E	23° 8' 32.147" N
399	P12	Patch-9_2	621021.206370	2559617.239700	82° 10' 55.490" E	23° 8' 27.535" N
400	P13	Patch-9_2	621125.544908	2559395.686900	82° 10' 59.095" E	23° 8' 20.305" N
401	P14	Patch-9_2	621143.703335	2559146.747630	82° 10' 59.662" E	23° 8' 12.206" N
402	P15	Patch-9_2	621206.939291	2558909.103760	82° 11' 1.817" E	23° 8' 4.463" N
403	P16	Patch-9_2	621247.972546	2558664.643790	82° 11' 3.190" E	23° 7' 56.504" N
404	P17	Patch-9_2	621112.167255	2558460.664050	82° 10' 58.358" E	23° 7' 49.908" N
405	P18	Patch-9_2	621025.052327	2558230.868180	82° 10' 55.230" E	23° 7' 42.459" N
406	P19	Patch-9_2	620975.575962	2557987.981120	82° 10' 53.421" E	23° 7' 34.575" N
407	P20	Patch-9_2	620969.668863	2557862.435040	82° 10' 53.178" E	23° 7' 30.495" N
408	P21	Patch-9_3	620958.077344	2557551.853780	82° 10' 52.682" E	23° 7' 20.400" N
409	P22	Patch-9_3	620912.210244	2557307.571110	82° 10' 51.000" E	23° 7' 12.470" N
410	P23	Patch-9_3	620932.304592	2557058.809960	82° 10' 51.636" E	23° 7' 4.377" N
411	P24	Patch-9_3	620992.707527	2556816.298770	82° 10' 53.690" E	23° 6' 56.476" N
412	P25	Patch-9_3	620966.244445	2556579.221140	82° 10' 52.692" E	23° 6' 48.775" N
413	P26	Patch-9_3	620968.229000	2556338.371570	82° 10' 52.693" E	23° 6' 40.944" N
414	P27	Patch-9_3	620910.674729	2556110.654180	82° 10' 50.606" E	23° 6' 33.555" N
415	P28	Patch-9_3	620761.052791	2556002.566620	82° 10' 45.316" E	23° 6' 30.080" N
416	P29	Patch-9_3	620727.744990	2555882.413900	82° 10' 44.111" E	23° 6' 26.182" N
417	P30	Patch-9_3	620661.346704	2555733.781360	82° 10' 41.735" E	23° 6' 21.367" N
418	P31	Patch-9_4	620678.902836	2555667.325140	82° 10' 42.333" E	23° 6' 19.202" N
419	P32	Patch-9_4	620735.281162	2555572.746810	82° 10' 44.288" E	23° 6' 16.112" N
420	P33	Patch-9_4	620798.250051	2555480.832630	82° 10' 46.475" E	23° 6' 13.107" N
421	P34	Patch-9_5	620996.432480	2555187.706270	82° 10' 53.357" E	23° 6' 3.525" N
422	P35	Patch-9_5	620978.638655	2555140.812920	82° 10' 52.719" E	23° 6' 2.005" N
423	P36	Patch-9_5	620940.656837	2555101.150560	82° 10' 51.372" E	23° 6' 0.725" N
424	P37	Patch-9_6	620581.184284	2554631.984640	82° 10' 38.605" E	23° 5' 45.565" N

DGPS Survey Points						
Manendragarh Division (Segment-II)						
Sr.No.	Point ID	Patch No.	UTM Coordinates		Geographical Coordinates	
			Easting (m)	Northing (m)	Longitude "E"	Latitude "N"
425	P38	Patch-9_6	620595.774626	2554581.340180	82° 10' 39.104" E	23° 5' 43.915" N
426	P39	Patch-9_6	620615.382918	2554532.978830	82° 10' 39.779" E	23° 5' 42.338" N
427	P40	Patch-9_7	620634.422211	2554447.474230	82° 10' 40.424" E	23° 5' 39.553" N
428	P41	Patch-9_7	620637.578910	2554429.467310	82° 10' 40.530" E	23° 5' 38.966" N
429	P42	Patch-9_7	620642.015184	2554395.515500	82° 10' 40.676" E	23° 5' 37.861" N
430	P43	Patch-9_7	620642.044653	2554363.126670	82° 10' 40.668" E	23° 5' 36.808" N
431	P44	Patch-9_7	620639.754477	2554343.234460	82° 10' 40.582" E	23° 5' 36.162" N
432	P45	Patch-9_8	620588.992563	2554290.321240	82° 10' 38.783" E	23° 5' 34.455" N
433	P46	Patch-9_8	620571.375828	2554275.196440	82° 10' 38.159" E	23° 5' 33.968" N
434	P47	Patch-9_9	620559.267651	2554264.839910	82° 10' 37.731" E	23° 5' 33.634" N
435	P48	Patch-9_9	620522.434296	2554226.092410	82° 10' 36.425" E	23° 5' 32.384" N
436	P49	Patch-9_9	620500.068038	2554177.573260	82° 10' 35.626" E	23° 5' 30.812" N
437	P50	Patch-9_10	620488.163061	2554120.123900	82° 10' 35.191" E	23° 5' 28.948" N
438	P51	Patch-9_10	620489.389893	2554045.503100	82° 10' 35.213" E	23° 5' 26.521" N
439	P52	Patch-9_10	620486.719742	2553971.178900	82° 10' 35.098" E	23° 5' 24.105" N
440	P53	Patch-9_11	620496.106728	2553846.227710	82° 10' 35.393" E	23° 5' 20.040" N
441	P54	Patch-9_11	620489.414654	2553737.882550	82° 10' 35.127" E	23° 5' 16.519" N
442	P55	Patch-9_11	620555.266966	2553629.836530	82° 10' 37.410" E	23° 5' 12.989" N
443	P56	Patch-9_11	620478.908999	2553529.862140	82° 10' 34.699" E	23° 5' 9.759" N
444	P57	Patch-9_11	620318.201815	2553484.005360	82° 10' 29.038" E	23° 5' 8.310" N
445	P58	Patch-9_11	620199.032433	2553415.242860	82° 10' 24.831" E	23° 5' 6.105" N
446	P59	Patch-9_11	620062.810727	2553248.572980	82° 10' 19.996" E	23° 5' 0.722" N
447	P1	Patch-10_1	621638.063317	2567565.844680	82° 11' 19.459" E	23° 12' 45.803" N
448	P2	Patch-10_1	621621.410674	2567560.056560	82° 11' 18.871" E	23° 12' 45.619" N
449	P3	Patch-10_1	621580.221663	2567544.746820	82° 11' 17.418" E	23° 12' 45.132" N
450	P4	Patch-10_1	621498.443463	2567518.735780	82° 11' 14.534" E	23° 12' 44.308" N
451	P5	Patch-10_1	621467.140397	2567508.848430	82° 11' 13.430" E	23° 12' 43.995" N
452	P6	Patch-10_1	621445.072230	2567501.868090	82° 11' 12.652" E	23° 12' 43.774" N
453	P7	Patch-10_1	621416.884969	2567488.560530	82° 11' 11.656" E	23° 12' 43.349" N
454	P8	Patch-10_1	621376.949911	2567469.598530	82° 11' 10.246" E	23° 12' 42.743" N
455	P9	Patch-10_1	621338.758285	2567451.374730	82° 11' 8.898" E	23° 12' 42.160" N
456	P10	Patch-10_1	621312.668884	2567437.246440	82° 11' 7.976" E	23° 12' 41.708" N
457	P11	Patch-10_1	621275.182959	2567420.269600	82° 11' 6.652" E	23° 12' 41.166" N
458	P12	Patch-10_1	621223.821405	2567395.433340	82° 11' 4.839" E	23° 12' 40.372" N
459	P13	Patch-10_1	621183.742342	2567373.702700	82° 11' 3.422" E	23° 12' 39.676" N
460	P14	Patch-10_1	621148.700282	2567354.789700	82° 11' 2.184" E	23° 12' 39.070" N
461	P15	Patch-10_1	621119.579401	2567335.238820	82° 11' 1.154" E	23° 12' 38.443" N
462	P16	Patch-10_1	621085.580483	2567306.972440	82° 10' 59.950" E	23° 12' 37.533" N
463	P17	Patch-10_1	621061.666562	2567284.224290	82° 10' 59.103" E	23° 12' 36.799" N
464	P18	Patch-10_1	621031.216263	2567254.932260	82° 10' 58.023" E	23° 12' 35.855" N
465	P19	Patch-10_1	621000.798734	2567222.465270	82° 10' 56.944" E	23° 12' 34.807" N
466	P20	Patch-10_1	620977.021046	2567189.735900	82° 10' 56.098" E	23° 12' 33.750" N

DGPS Survey Points

Manendragarh Division (Segment-II)

Sr.No.	Point ID	Patch No.	UTM Coordinates		Geographical Coordinates	
			Easting (m)	Northing (m)	Longitude "E"	Latitude "N"
467	P21	Patch-10_1	620964.176567	2567163.372140	82° 10' 55.639" E	23° 12' 32.896" N
468	P22	Patch-10_1	620951.688511	2567138.025240	82° 10' 55.192" E	23° 12' 32.075" N
469	P23	Patch-10_1	620944.681793	2567116.484600	82° 10' 54.940" E	23° 12' 31.377" N
470	P24	Patch-10_1	620945.959242	2567094.319640	82° 10' 54.978" E	23° 12' 30.656" N
471	P25	Patch-10_1	620956.288509	2567075.794960	82° 10' 55.336" E	23° 12' 30.051" N
472	P26	Patch-10_1	620968.701807	2567055.688340	82° 10' 55.767" E	23° 12' 29.394" N
473	P27	Patch-10_1	620977.683710	2567038.924970	82° 10' 56.078" E	23° 12' 28.846" N
474	P28	Patch-10_1	620980.517719	2567026.855210	82° 10' 56.175" E	23° 12' 28.453" N
475	P29	Patch-10_1	620979.427678	2567019.839020	82° 10' 56.134" E	23° 12' 28.225" N
476	P30	Patch-10_1	620973.549344	2567010.487010	82° 10' 55.925" E	23° 12' 27.923" N
477	P31	Patch-10_1	620960.339229	2566994.953220	82° 10' 55.456" E	23° 12' 27.421" N
478	P32	Patch-10_1	620950.443163	2566981.943640	82° 10' 55.104" E	23° 12' 27.001" N
479	P33	Patch-10_1	620945.008550	2566963.531950	82° 10' 54.908" E	23° 12' 26.404" N
480	P34	Patch-10_1	620952.624657	2566945.036260	82° 10' 55.170" E	23° 12' 25.800" N
481	P35	Patch-10_1	620969.798305	2566932.829040	82° 10' 55.771" E	23° 12' 25.399" N
482	P36	Patch-10_1	620999.042184	2566925.126250	82° 10' 56.797" E	23° 12' 25.141" N
483	P37	Patch-10_1	621025.765034	2566920.038000	82° 10' 57.736" E	23° 12' 24.968" N
484	P38	Patch-10_1	621041.228615	2566912.282230	82° 10' 58.277" E	23° 12' 24.712" N
485	P39	Patch-10_1	621050.797346	2566901.780750	82° 10' 58.611" E	23° 12' 24.368" N
486	P40	Patch-10_1	621059.640145	2566889.783300	82° 10' 58.919" E	23° 12' 23.976" N
487	P41	Patch-10_1	621068.573772	2566871.540220	82° 10' 59.228" E	23° 12' 23.380" N
488	P42	Patch-10_1	621081.340694	2566855.681800	82° 10' 59.672" E	23° 12' 22.861" N
489	P43	Patch-10_1	621097.007857	2566846.506950	82° 11' 0.221" E	23° 12' 22.559" N
490	P44	Patch-10_1	621119.049178	2566844.662300	82° 11' 0.995" E	23° 12' 22.493" N
491	P45	Patch-10_1	621141.280446	2566846.545060	82° 11' 1.778" E	23° 12' 22.548" N
492	P46	Patch-10_1	621165.972447	2566846.200730	82° 11' 2.646" E	23° 12' 22.530" N
493	P47	Patch-10_1	621183.188867	2566846.341000	82° 11' 3.252" E	23° 12' 22.530" N
494	P48	Patch-10_1	621194.460532	2566843.925110	82° 11' 3.648" E	23° 12' 22.449" N
495	P49	Patch-10_1	621200.417189	2566837.931420	82° 11' 3.855" E	23° 12' 22.252" N
496	P50	Patch-10_1	621204.477936	2566830.328400	82° 11' 3.996" E	23° 12' 22.004" N
497	P51	Patch-10_1	621205.556427	2566819.505440	82° 11' 4.031" E	23° 12' 21.652" N
498	P52	Patch-10_1	621203.348941	2566809.557640	82° 11' 3.950" E	23° 12' 21.329" N
499	P53	Patch-10_1	621200.830051	2566804.445010	82° 11' 3.860" E	23° 12' 21.164" N
500	P54	Patch-10_1	621190.055849	2566797.307080	82° 11' 3.479" E	23° 12' 20.934" N
501	P55	Patch-10_1	621169.220788	2566791.754510	82° 11' 2.745" E	23° 12' 20.759" N
502	P56	Patch-10_1	621137.621400	2566782.132550	82° 11' 1.631" E	23° 12' 20.455" N
503	P57	Patch-10_1	621113.602836	2566772.900340	82° 11' 0.783" E	23° 12' 20.161" N
504	P58	Patch-10_1	621089.588602	2566763.969730	82° 10' 59.936" E	23° 12' 19.877" N
505	P59	Patch-10_1	621072.120452	2566756.145220	82° 10' 59.319" E	23° 12' 19.627" N
506	P60	Patch-10_1	621055.958265	2566746.535050	82° 10' 58.748" E	23° 12' 19.319" N
507	P61	Patch-10_1	621046.111939	2566729.912850	82° 10' 58.397" E	23° 12' 18.781" N
508	P62	Patch-10_1	621041.067070	2566713.200110	82° 10' 58.215" E	23° 12' 18.239" N
509	P63	Patch-10_1	621040.931779	2566690.716240	82° 10' 58.204" E	23° 12' 17.508" N
510	P64	Patch-10_1	621044.090206	2566668.814770	82° 10' 58.308" E	23° 12' 16.795" N
511	P65	Patch-10_1	621048.567585	2566648.004980	82° 10' 58.460" E	23° 12' 16.118" N
512	P66	Patch-10_1	621052.703941	2566630.563210	82° 10' 58.600" E	23° 12' 15.549" N
513	P67	Patch-10_1	621053.784185	2566614.834620	82° 10' 58.634" E	23° 12' 15.038" N
514	P68	Patch-10_1	621051.087999	2566601.957860	82° 10' 58.535" E	23° 12' 14.620" N

DGPS Survey Points						
Manendragarh Division (Segment-II)						
Sr.No.	Point ID	Patch No.	UTM Coordinates		Geographical Coordinates	
			Easting (m)	Northing (m)	Longitude "E"	Latitude "N"
515	P69	Patch-10_1	621043.427303	2566589.546950	82° 10' 58.262" E	23° 12' 14.218" N
516	P70	Patch-10_1	621031.945331	2566578.624810	82° 10' 57.855" E	23° 12' 13.866" N
517	P71	Patch-10_1	621020.666746	2566573.416130	82° 10' 57.457" E	23° 12' 13.700" N
518	P72	Patch-10_1	621001.344618	2566572.347050	82° 10' 56.777" E	23° 12' 13.670" N
519	P73	Patch-10_1	620979.170543	2566577.789680	82° 10' 55.999" E	23° 12' 13.853" N
520	P74	Patch-10_1	620958.229528	2566587.730660	82° 10' 55.265" E	23° 12' 14.182" N
521	P75	Patch-10_1	620938.321915	2566598.828340	82° 10' 54.568" E	23° 12' 14.548" N
522	P76	Patch-10_1	620916.790735	2566607.896290	82° 10' 53.813" E	23° 12' 14.848" N
523	P77	Patch-10_1	620884.822085	2566620.254720	82° 10' 52.692" E	23° 12' 15.259" N
524	P78	Patch-10_1	620857.580232	2566630.266760	82° 10' 51.737" E	23° 12' 15.591" N
525	P79	Patch-10_1	620832.650667	2566637.090050	82° 10' 50.862" E	23° 12' 15.820" N
526	P80	Patch-10_1	620780.114974	2566653.801700	82° 10' 49.019" E	23° 12' 16.377" N
527	P81	Patch-10_1	620740.670340	2566666.796400	82° 10' 47.635" E	23° 12' 16.810" N
528	P82	Patch-10_1	620697.484568	2566681.256310	82° 10' 46.120" E	23° 12' 17.291" N
529	P83	Patch-10_1	620652.452055	2566694.262690	82° 10' 44.540" E	23° 12' 17.726" N
530	P84	Patch-10_1	620584.650664	2566704.668450	82° 10' 42.158" E	23° 12' 18.082" N
531	P85	Patch-10_1	620534.101943	2566713.180110	82° 10' 40.383" E	23° 12' 18.372" N
532	P86	Patch-10_1	620433.532506	2566726.192180	82° 10' 36.849" E	23° 12' 18.822" N
533	P87	Patch-10_1	620378.001904	2566736.111860	82° 10' 34.898" E	23° 12' 19.159" N
534	P88	Patch-10_1	620325.283753	2566752.255190	82° 10' 33.049" E	23° 12' 19.698" N
535	P89	Patch-10_1	620287.928051	2566767.308260	82° 10' 31.739" E	23° 12' 20.197" N
536	P90	Patch-10_1	620245.211840	2566784.699410	82° 10' 30.242" E	23° 12' 20.774" N
537	P91	Patch-10_1	620216.415791	2566795.310860	82° 10' 29.232" E	23° 12' 21.126" N
538	P92	Patch-10_1	620177.952503	2566805.534960	82° 10' 27.882" E	23° 12' 21.469" N
539	P93	Patch-10_1	620135.745262	2566814.189380	82° 10' 26.399" E	23° 12' 21.761" N
540	P94	Patch-10_1	620072.512100	2566825.870950	82° 10' 24.179" E	23° 12' 22.158" N
541	P95	Patch-10_1	620037.234751	2566834.268150	82° 10' 22.940" E	23° 12' 22.440" N
542	P96	Patch-10_1	620002.127807	2566846.095330	82° 10' 21.709" E	23° 12' 22.834" N
543	P97	Patch-10_1	619983.913753	2566854.418300	82° 10' 21.070" E	23° 12' 23.109" N
544	P98	Patch-10_1	619964.510870	2566870.865330	82° 10' 20.392" E	23° 12' 23.649" N
545	P99	Patch-10_1	619942.389599	2566893.040060	82° 10' 19.621" E	23° 12' 24.376" N
546	P100	Patch-10_1	619908.542836	2566932.764730	82° 10' 18.441" E	23° 12' 25.676" N
547	P101	Patch-10_1	619879.838863	2566960.844750	82° 10' 17.440" E	23° 12' 26.597" N
548	P102	Patch-10_1	619857.430913	2566973.058090	82° 10' 16.655" E	23° 12' 26.999" N
549	P103	Patch-10_1	619840.160582	2566976.132620	82° 10' 16.048" E	23° 12' 27.104" N
550	P104	Patch-10_1	619816.846220	2566973.364480	82° 10' 15.227" E	23° 12' 27.020" N
551	P105	Patch-10_1	619785.287969	2566962.327370	82° 10' 14.114" E	23° 12' 26.670" N
552	P106	Patch-10_1	619742.918797	2566946.310070	82° 10' 12.619" E	23° 12' 26.160" N
553	P107	Patch-10_1	619721.495958	2566937.668740	82° 10' 11.863" E	23° 12' 25.884" N
554	P108	Patch-10_1	619706.265749	2566928.850140	82° 10' 11.325" E	23° 12' 25.602" N
555	P109	Patch-10_1	619690.829368	2566916.434980	82° 10' 10.779" E	23° 12' 25.202" N
556	P110	Patch-10_1	619681.298689	2566893.704260	82° 10' 10.437" E	23° 12' 24.466" N
557	P111	Patch-10_1	619676.229371	2566874.018170	82° 10' 10.253" E	23° 12' 23.827" N
558	P112	Patch-10_1	619670.313880	2566853.064080	82° 10' 10.039" E	23° 12' 23.147" N
559	P113	Patch-10_1	619667.239851	2566842.749050	82° 10' 9.928" E	23° 12' 22.813" N
560	P114	Patch-10_1	619662.336159	2566833.024880	82° 10' 9.753" E	23° 12' 22.498" N
561	P115	Patch-10_1	619654.946502	2566824.196370	82° 10' 9.490" E	23° 12' 22.213" N
562	P116	Patch-10_1	619644.386649	2566815.839930	82° 10' 9.117" E	23° 12' 21.944" N

DGPS Survey Points						
Manendragarh Division (Segment-II)						
Sr.No.	Point ID	Patch No.	UTM Coordinates		Geographical Coordinates	
			Easting (m)	Northing (m)	Longitude "E"	Latitude "N"
563	P117	Patch-10_1	619629.670690	2566809.219570	82° 10' 8.597" E	23° 12' 21.732" N
564	P118	Patch-10_1	619610.897788	2566804.001530	82° 10' 7.935" E	23° 12' 21.568" N
565	P119	Patch-10_1	619581.789970	2566800.545370	82° 10' 6.910" E	23° 12' 21.463" N
566	P120	Patch-10_1	619555.224941	2566797.876080	82° 10' 5.975" E	23° 12' 21.383" N
567	P121	Patch-10_1	619508.697050	2566796.392660	82° 10' 4.338" E	23° 12' 21.347" N
568	P122	Patch-10_1	619466.474092	2566794.379750	82° 10' 2.853" E	23° 12' 21.292" N
569	P123	Patch-10_1	619434.322102	2566793.276200	82° 10' 1.721" E	23° 12' 21.265" N
570	P124	Patch-10_1	619375.238287	2566787.770960	82° 9' 59.642" E	23° 12' 21.101" N
571	P125	Patch-10_1	619317.334737	2566783.684430	82° 9' 57.604" E	23° 12' 20.984" N
572	P126	Patch-10_1	619265.112690	2566778.788690	82° 9' 55.765" E	23° 12' 20.838" N
573	P127	Patch-10_1	619232.664743	2566775.182110	82° 9' 54.623" E	23° 12' 20.729" N
574	P128	Patch-10_1	619216.374027	2566773.505350	82° 9' 54.050" E	23° 12' 20.679" N
575	P129	Patch-10_1	619206.119237	2566774.529220	82° 9' 53.689" E	23° 12' 20.715" N
576	P130	Patch-10_1	619191.611306	2566779.288000	82° 9' 53.180" E	23° 12' 20.873" N
577	P131	Patch-10_1	619164.549017	2566792.064010	82° 9' 52.232" E	23° 12' 21.296" N
578	P132	Patch-10_1	619121.991921	2566812.392690	82° 9' 50.741" E	23° 12' 21.968" N
579	P133	Patch-10_1	619071.448729	2566834.602170	82° 9' 48.969" E	23° 12' 22.703" N
580	P134	Patch-10_1	619027.055700	2566853.728190	82° 9' 47.413" E	23° 12' 23.337" N
581	P135	Patch-10_1	618981.174884	2566873.358350	82° 9' 45.805" E	23° 12' 23.987" N
582	P136	Patch-10_1	618936.969555	2566894.751300	82° 9' 44.256" E	23° 12' 24.694" N
583	P137	Patch-10_1	618910.290651	2566908.675220	82° 9' 43.321" E	23° 12' 25.153" N
584	P138	Patch-10_1	618881.979702	2566930.329000	82° 9' 42.331" E	23° 12' 25.865" N
585	P139	Patch-10_1	618858.655980	2566953.970280	82° 9' 41.518" E	23° 12' 26.639" N
586	P140	Patch-10_1	618838.136416	2566970.255140	82° 9' 40.800" E	23° 12' 27.174" N
587	P141	Patch-10_1	618814.469162	2566985.353070	82° 9' 39.972" E	23° 12' 27.671" N
588	P142	Patch-10_1	618783.986992	2566999.620980	82° 9' 38.904" E	23° 12' 28.143" N
589	P143	Patch-10_1	618754.040890	2567010.225410	82° 9' 37.854" E	23° 12' 28.496" N
590	P144	Patch-10_1	618711.060213	2567023.777200	82° 9' 36.346" E	23° 12' 28.947" N
591	P145	Patch-10_1	618670.622113	2567038.102470	82° 9' 34.927" E	23° 12' 29.424" N
592	P146	Patch-10_1	618634.188564	2567051.142860	82° 9' 33.649" E	23° 12' 29.857" N
593	P147	Patch-10_1	618609.071437	2567060.160280	82° 9' 32.768" E	23° 12' 30.157" N
594	P148	Patch-10_1	618581.238507	2567077.480320	82° 9' 31.794" E	23° 12' 30.727" N
595	P149	Patch-10_1	618540.049094	2567100.044830	82° 9' 30.352" E	23° 12' 31.471" N
596	P150	Patch-10_1	618490.358897	2567128.743610	82° 9' 28.612" E	23° 12' 32.417" N
597	P151	Patch-10_1	618441.540449	2567156.668830	82° 9' 26.902" E	23° 12' 33.338" N
598	P152	Patch-10_1	618379.671643	2567193.398030	82° 9' 24.736" E	23° 12' 34.548" N
599	P153	Patch-10_1	618324.869798	2567225.767030	82° 9' 22.818" E	23° 12' 35.615" N
600	P154	Patch-10_1	618267.953081	2567259.413410	82° 9' 20.825" E	23° 12' 36.723" N
601	P155	Patch-10_1	618214.248723	2567289.423280	82° 9' 18.944" E	23° 12' 37.713" N
602	P156	Patch-10_1	618157.440888	2567319.612010	82° 9' 16.955" E	23° 12' 38.709" N
603	P157	Patch-10_1	618121.906514	2567334.385500	82° 9' 15.709" E	23° 12' 39.199" N
604	P158	Patch-10_1	618078.913714	2567351.742720	82° 9' 14.201" E	23° 12' 39.774" N
605	P159	Patch-10_1	618059.598987	2567360.615970	82° 9' 13.524" E	23° 12' 40.068" N
606	P160	Patch-10_1	618045.841008	2567369.575500	82° 9' 13.043" E	23° 12' 40.362" N
607	P161	Patch-10_1	618030.222900	2567382.779670	82° 9' 12.497" E	23° 12' 40.796" N
608	P162	Patch-10_1	618018.160350	2567394.842190	82° 9' 12.076" E	23° 12' 41.191" N
609	P163	Patch-10_1	618001.812195	2567413.192160	82° 9' 11.506" E	23° 12' 41.792" N
610	P164	Patch-10_1	617982.013239	2567443.598470	82° 9' 10.818" E	23° 12' 42.786" N

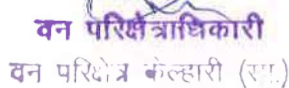
DGPS Survey Points

Manendragarh Division (Segment-II)

Sr.No.	Point ID	Patch No.	UTM Coordinates		Geographical Coordinates	
			Easting (m)	Northing (m)	Longitude "E"	Latitude "N"
611	P165	Patch-10_1	617957.867770	2567489.574420	82° 9' 9.982" E	23° 12' 44.287" N
612	P166	Patch-10_1	617928.115566	2567546.687720	82° 9' 8.951" E	23° 12' 46.151" N
613	P167	Patch-10_1	617906.497938	2567587.448590	82° 9' 8.202" E	23° 12' 47.482" N
614	P168	Patch-10_1	617879.131600	2567638.531220	82° 9' 7.254" E	23° 12' 49.150" N
615	P169	Patch-10_1	617861.290461	2567677.934310	82° 9' 6.637" E	23° 12' 50.436" N
616	P170	Patch-10_1	617842.946575	2567711.159070	82° 9' 6.001" E	23° 12' 51.521" N
617	P171	Patch-10_1	617819.566515	2567746.963510	82° 9' 5.189" E	23° 12' 52.691" N
618	P172	Patch-10_1	617792.229708	2567784.120760	82° 9' 4.237" E	23° 12' 53.906" N
619	P173	Patch-10_1	617761.099208	2567826.719510	82° 9' 3.154" E	23° 12' 55.299" N
620	P174	Patch-10_1	617731.239169	2567866.749980	82° 9' 2.115" E	23° 12' 56.608" N
621	P175	Patch-10_1	617703.313900	2567901.443130	82° 9' 1.142" E	23° 12' 57.743" N
622	P176	Patch-10_1	617671.082080	2567933.833980	82° 9' 0.017" E	23° 12' 58.805" N
623	P177	Patch-10_1	617635.896238	2567958.805640	82° 8' 58.787" E	23° 12' 59.626" N
624	P178	Patch-10_1	617594.241263	2567980.960410	82° 8' 57.327" E	23° 13' 0.357" N
625	P179	Patch-10_1	617559.899512	2567993.375880	82° 8' 56.123" E	23° 13' 0.769" N
626	P180	Patch-10_1	617514.277358	2568006.336880	82° 8' 54.522" E	23° 13' 1.202" N

627	P1	Patch-11_1	638353.509520	2574552.360190	82° 21' 9.711" E	23° 16' 28.186" N
628	P2	Patch-11_1	638366.696069	2574527.972210	82° 21' 10.167" E	23° 16' 27.390" N
629	P3	Patch-11_1	638380.596847	2574503.981540	82° 21' 10.648" E	23° 16' 26.605" N
630	P4	Patch-11_2	638285.591167	2573204.145790	82° 21' 6.879" E	23° 15' 44.376" N
631	P5	Patch-11_2	638225.808809	2573139.485780	82° 21' 4.754" E	23° 15' 42.292" N
632	P6	Patch-11_2	638165.515785	2573075.304390	82° 21' 2.611" E	23° 15' 40.224" N
633	P7	Patch-11_3	638133.086114	2573036.852550	82° 21' 1.458" E	23° 15' 38.984" N
634	P8	Patch-11_3	638118.674583	2572991.563960	82° 21' 0.936" E	23° 15' 37.516" N
635	P9	Patch-11_4	638126.797677	2572903.526480	82° 21' 1.193" E	23° 15' 34.651" N
636	P10	Patch-11_4	638133.396193	2572865.299450	82° 21' 1.412" E	23° 15' 33.406" N
637	P11	Patch-11_4	638139.034660	2572826.916000	82° 21' 1.598" E	23° 15' 32.157" N
638	P12	Patch-11_5	638294.408917	2572124.543210	82° 21' 6.835" E	23° 15' 9.275" N
639	P13	Patch-11_5	638288.666000	2572089.202150	82° 21' 6.621" E	23° 15' 8.128" N
640	P14	Patch-11_5	638279.285825	2572054.643930	82° 21' 6.280" E	23° 15' 7.008" N
641	P15	Patch-11_6	637817.245613	2571338.371780	82° 20' 49.789" E	23° 14' 43.861" N
642	P16	Patch-11_6	637676.654294	2571170.189450	82° 20' 44.788" E	23° 14' 38.436" N
643	P17	Patch-11_6	637705.930670	2570971.957800	82° 20' 45.754" E	23° 14' 31.982" N
644	P18	Patch-11_6	637693.616213	2570847.307240	82° 20' 45.280" E	23° 14' 27.934" N


उपवनमण्डलाधिकारी
उपवनमण्डल मनेन्द्रगढ़


वन परिक्षेत्राधिकारी
वन परिक्षेत्र कलहारी (रग.)


वन परिक्षेत्राधिकारी
वन परिक्षेत्र बिहारपुर

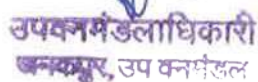



वन परिक्षेत्राधिकारी
बहरासी


वन परिक्षेत्राधिकारी
कुंवारपुर


वन परिक्षेत्राधिकारी
जनकपुर


उपवनमण्डलाधिकारी
उपवनमण्डल मनेन्द्रगढ़


उपवनमण्डलाधिकारी
जनकपुर, उप वनमंडल


उपवनमण्डलाधिकारी
उपवनमण्डल मनेन्द्रगढ़