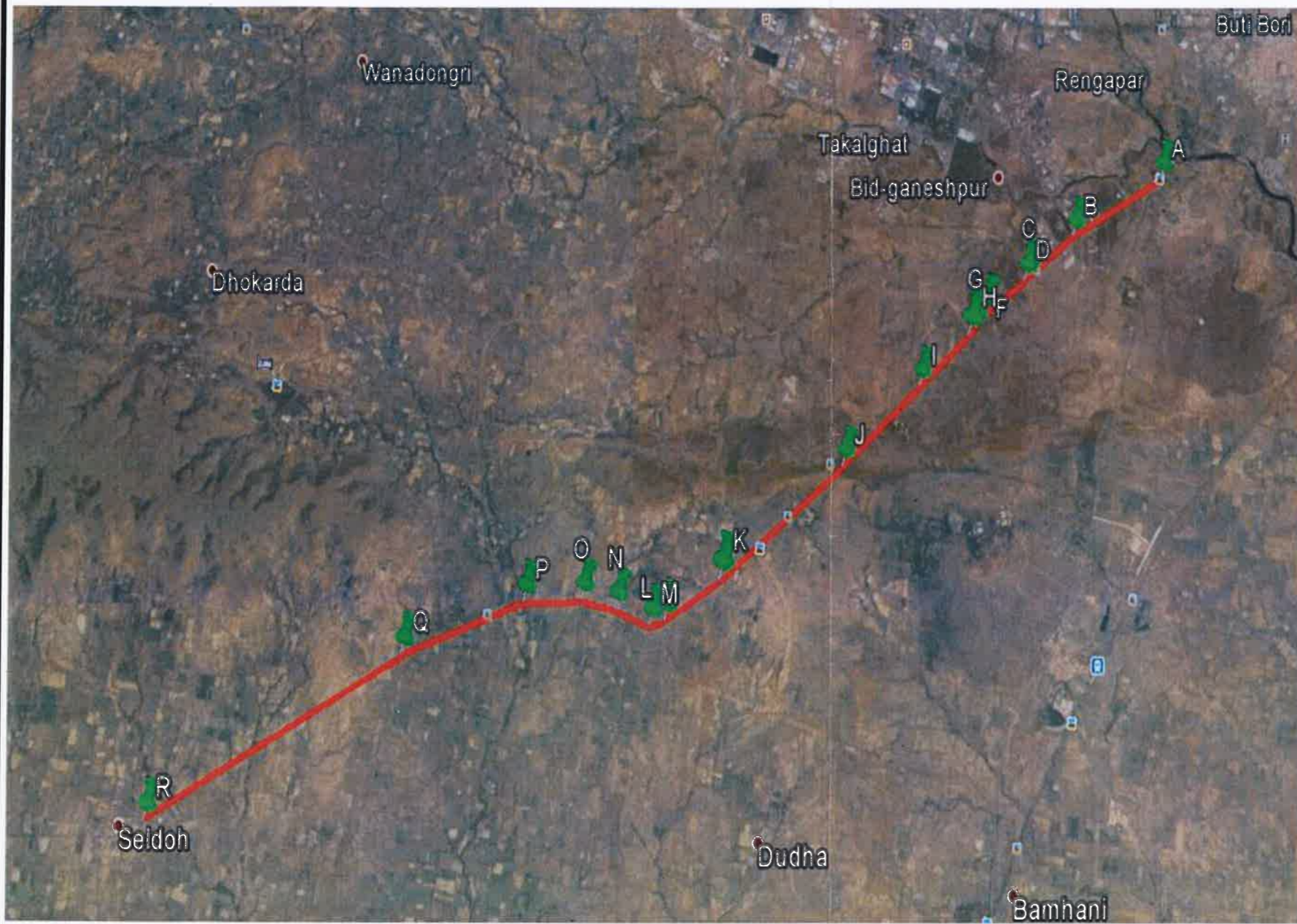


Rehabilitation and upgradation of existing Buttibori-Wardha section of NH-361, km28.800-km80.000 to 4 lane configuration, in the state of Maharashtra



	Latitude	Longitude
A	20°54'38.69"	78°59'19.16"
B	20°54'15.89"	78°58'32.10"
C	20°54'0.26"	78°58'8.39"
D	20°53'58.60"	78°58'6.03"
E	20°53'46.60"	78°57'46.19"
F	20°53'45.68"	78°57'45.06"
G	20°53'40.58"	78°57'40.15"
H	20°53'37.44"	78°57'36.59"
I	20°53'18.36"	78°57'11.24"
J	20°52'49.07"	78°56'32.43"
K	20°52'8.31"	78°55'32.15"
L	20°51'54.76"	78°55'6.41"
M	20°51'52.94"	78°54'59.16"
N	20°51'58.75"	78°54'43.23"
O	20°52'1.96"	78°54'27.05"
P	20°52'1.23"	78°53'59.51"
Q	20°51'43.26"	78°53'2.90"
R	20°50'48.47"	78°51'10.21"

 Proposed for Diversion



Sunil V. Patil
(Sunil V. Patil)
 DGM (Tech) & Project Director
 NHAI, PIU-YAVATMAL