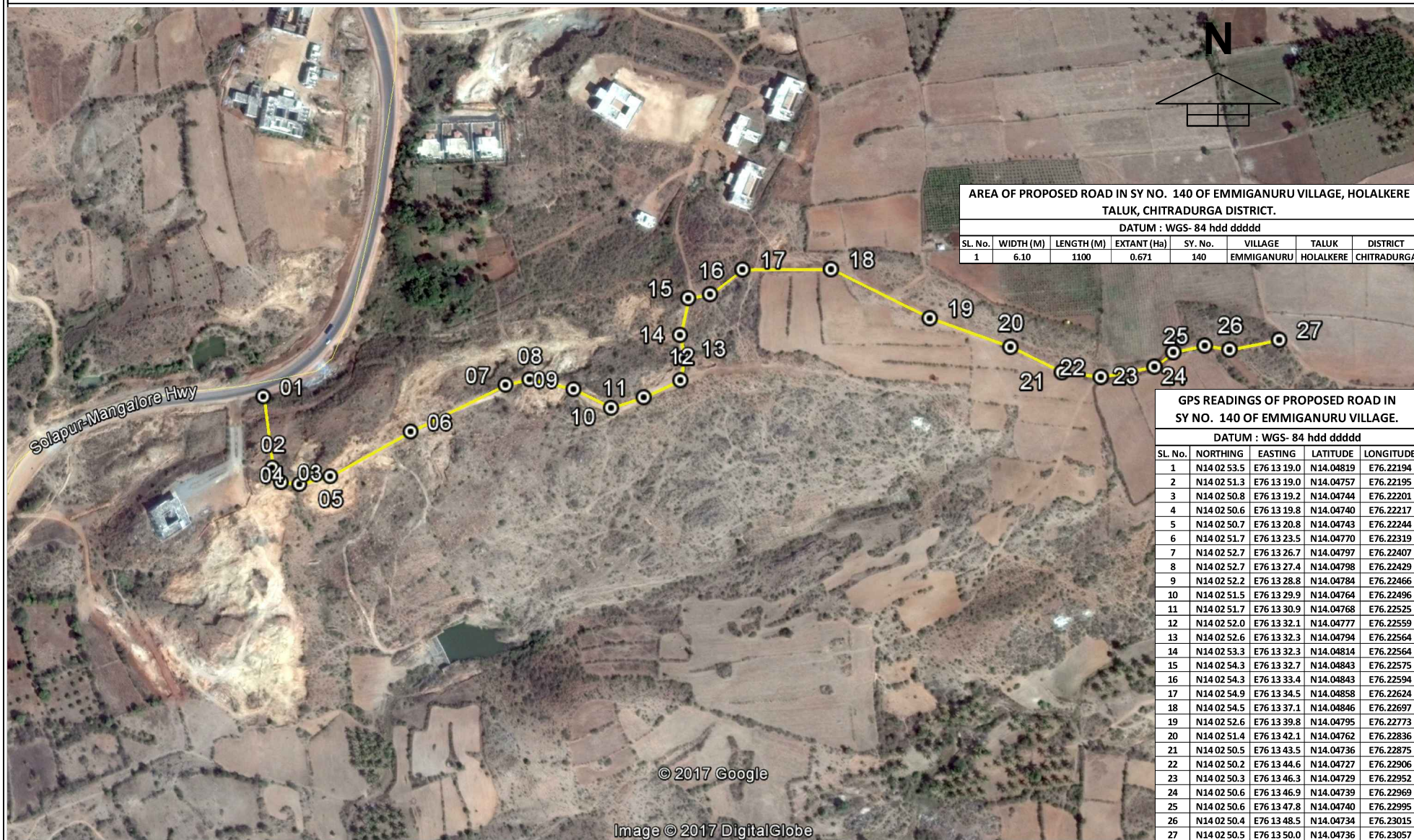


THE GOOGLE MAP SHOWING THE AREA FOR CONNECTIVITY ROAD IN SY No. 140 OF YAMMIGANUR VILLAGE, KASABA HOBLI, HOLALKERE TALUK, CHITRADURGA DISTRICT

(IN FAVOR OF Sri. VEERESH. s/o VENKATESHAPPA. KALAGATTA VILLAGE, HOLALKERE Tq, CHITRADURGA Dist.)



AREA OF PROPOSED ROAD IN SY NO. 140 OF EMMIGANURU VILLAGE, HOLALKERE TALUK, CHITRADURGA DISTRICT.

DATUM : WGS- 84 hdd dddd							
SL. No.	WIDTH (M)	LENGTH (M)	EXTANT (Ha)	SY. No.	VILLAGE	TALUK	DISTRICT
1	6.10	1100	0.671	140	EMMIGANURU	HOLALKERE	CHITRADURGA

GPS READINGS OF PROPOSED ROAD IN SY NO. 140 OF EMMIGANURU VILLAGE.

DATUM : WGS- 84 hdd dddd				
SL. No.	NORTHING	EASTING	LATITUDE	LONGITUDE
1	N14 02 53.5	E76 13 19.0	N14.04819	E76.22194
2	N14 02 51.3	E76 13 19.0	N14.04757	E76.22195
3	N14 02 50.8	E76 13 19.2	N14.04744	E76.22201
4	N14 02 50.6	E76 13 19.8	N14.04740	E76.22217
5	N14 02 50.7	E76 13 20.8	N14.04743	E76.22244
6	N14 02 51.7	E76 13 23.5	N14.04770	E76.22319
7	N14 02 52.7	E76 13 26.7	N14.04797	E76.22407
8	N14 02 52.7	E76 13 27.4	N14.04798	E76.22429
9	N14 02 52.2	E76 13 28.8	N14.04784	E76.22466
10	N14 02 51.5	E76 13 29.9	N14.04764	E76.22496
11	N14 02 51.7	E76 13 30.9	N14.04768	E76.22525
12	N14 02 52.0	E76 13 32.1	N14.04777	E76.22559
13	N14 02 52.6	E76 13 32.3	N14.04794	E76.22564
14	N14 02 53.3	E76 13 32.3	N14.04814	E76.22564
15	N14 02 54.3	E76 13 32.7	N14.04843	E76.22575
16	N14 02 54.3	E76 13 33.4	N14.04843	E76.22594
17	N14 02 54.9	E76 13 34.5	N14.04858	E76.22624
18	N14 02 54.5	E76 13 37.1	N14.04846	E76.22697
19	N14 02 52.6	E76 13 39.8	N14.04795	E76.22773
20	N14 02 51.4	E76 13 42.1	N14.04762	E76.22836
21	N14 02 50.5	E76 13 43.5	N14.04736	E76.22875
22	N14 02 50.2	E76 13 44.6	N14.04727	E76.22906
23	N14 02 50.3	E76 13 46.3	N14.04729	E76.22952
24	N14 02 50.6	E76 13 46.9	N14.04739	E76.22969
25	N14 02 50.6	E76 13 47.8	N14.04740	E76.22995
26	N14 02 50.4	E76 13 48.5	N14.04734	E76.23015
27	N14 02 50.5	E76 13 50.0	N14.04736	E76.23057