

MAP SHOWING SURVEY OF INDIA TOPOSHEET MAP WITH PROPOSED TRANSMISSION LINE ALIGNMENT AND REQUIRED FOREST LAND
 Project Name:- Construction of 33 KV Transmission Line to Lothiyana GSS to Proposed 33/11 KV Mandesara GSS, Tehsil - Rawatbhata, District - Chittorgarh, Rajasthan
 Proposal No. : FP/RJ/TRANS/40778/2019 (Area-11.8905 Ha.)



OPEN SERIES MAP
No. G43V5
 Scale 1:50,000

G43P4 (45O/4)	Bhilwara RAJASTHAN G43P8 (45O/8)	Bundi RAJASTHAN G43P12 (45O/12)
G43V1 (45P/1)	G43V5 (45P/5)	G43V9 (45P/9)
G43V2 (45P/2)	G43V6 (45P/6)	G43V10 (45P/10)

1 Kota, RAJASTHAN.

भारतीय सर्वेक्षण विभाग SURVEY OF INDIA
 1st Edition 2011. Price : Rs. 116 /-

CONVENTIONAL SYMBOLS

Express highway; with toll; with bridge; with distance stone		20
Roads, metalled; according to importance		
Roads, double cartmargway; according to importance		
Unmetalled road. Cart-track. Pack-track with pass. Foot-path		
Streams; with track in bed; undefined. Canal		
Dams; masonry or rock-filled; earthenwork. Weir		
River; dry with water channel; with island & rocks. Tidal river		
Submerged rocks. Shoal. Swamp. Reeds		
Wells; lined; unlined. Tube-well. Spring. Tanks; perennial; dry		
Embankments; road or rail; tank. Broken ground		
Railways, broad gauge; double; single with station; under constr.		
Railways, other gauges; double; single with distance stone; do.		
Mineral line or tramway. Kin. Cutting with tunnel		
Contours with sub-features. Rocky slopes. Cliffs		
Sand features; (1) flat. (2) sand-hills (permanent). (3) dunes (shifting)		
Towns or Villages; inhabited; deserted. Fort		
Huts; permanent; temporary. Tower. Antiquities		
Temple. Chhatra. Church. Mosque. Igah. Tomb. Graves		
Lighthouse. Lightship. Buoys; lighted; unlighted. Anchorage		
Mine. Vine on trellis. Grass. Scrub		
Palms; palmyra; other. Plantain. Conifer. Bamboo. Other trees		
Areas; cultivated; wooded. Surveyed tree		
Boundary; international		
state; demarcated; undemarcated		
district; subdivision; tahsil or taluk; forest		
Boundary pillars; surveyed; unlocated		
Heights; triangulated; station; point; approximate		200 .200
Bench-mark; geodetic; tertiary; canal		BM 63-3 .6M 63-3 .63
Post office. Telegraph office. Overhead tank		
Rest house or inspection bungalow. Circuit house. Police station		
Camping ground. Forest; reserved; protected		RF PF
Spaced names; administrative; locality or tribal		KIKRI NAGA
Hospital. Dispensary. Veterinary Hospital / Dispensary		
Aerodrome. Helipad. Tourist site		
Power line; with pylons surveyed; with poles unsurveyed		

NOTES :-
 Heights are in metres and above Indian mean sea level.
 Contours are approximate.
 A relative height, e.g., 10m, represents the approximate height, in metres, between the top and bottom of a steep slope.
 Tanks, shown dry, in this area usually contain water from July to December.
 Wells and tube-wells are numerous throughout the sheet; only the important ones have been shown.
 Diggi is a tank which is used for collection of water.

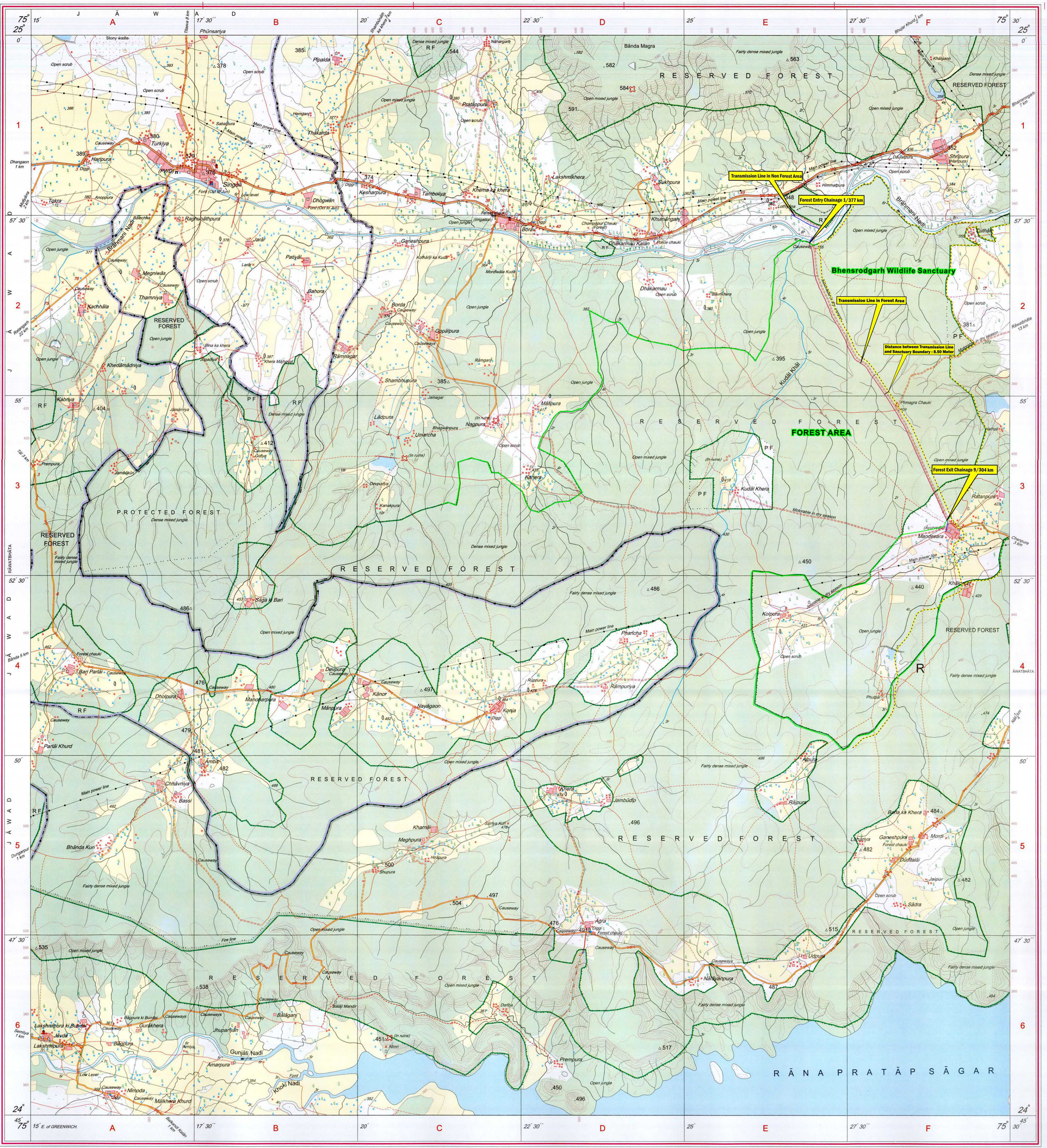
COMPILATION INDEX
 A Surveyed during 1982-83. Updated for major details during 2005-06.

Projection - UTM Datum - WGS 84
 Magnetic Variation from True North about 0° in 2005.
 (Increasing by about 1" East annually).
 500 m to 1 cm
1:50,000
 2 cm to 1 km
 Metres 1000 500 0 1 2 3 Kilometres
 CONTOUR INTERVAL 20 METRES

For further details about this map, please contact
 Director
 Rajasthan Geo-Spatial Data Centre
 Survey of India
 Sector 10, Vidyadhamagar
 Jaipur.
 WEBSITE - www.surveyofindia.gov.in

Reproduction in whole or part by any means is prohibited without the written permission of Survey of India, the National Mapping Agency.

GOVERNMENT OF INDIA COPYRIGHT, 2011.



REG. No. 10468 (P) - WPG D'16 (Rajasthan GDC-1:50,000)-S15

LEGEND

	Transmission Line in Forest Land
	Transmission Line in Non Forest Land
	Bhensrodgarh Wildlife Sanctuary Boundary
	Forest Boundary

भारत के मासिक संचालक राजेन्द्र मंगल विपरीत, एम.एस.सी. (फिजिक्स), पी.जी. डिप्लोमा (कार्टो) (आई.टी.सी. केरल) के निदेश पर प्रकाशित.
 Published under the direction of Rajendra Mani Tripathi, M.Sc. (Physics), P.G. Diploma (Carto) (I.T.C., The Netherlands) Surveyor General of India,
 Survey of India, Hathi Barkala Estate, Post Box No. 37, Dehra Dun-248001 (Uttarakhand),
 Department of Science & Technology, Government of India.

PRINTED AT THE WESTERN PRINTING GROUP OF SURVEY OF INDIA.

Assistant Engineer (O&M)
 A.V.V.N. Ltd., Rawat Bhata