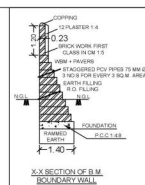
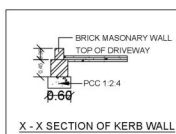
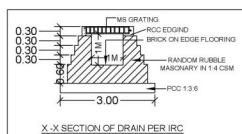
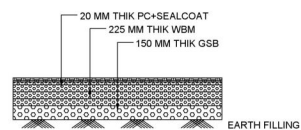
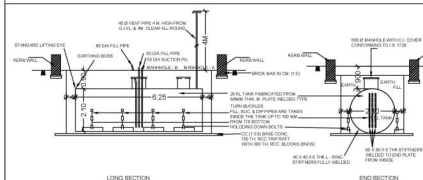
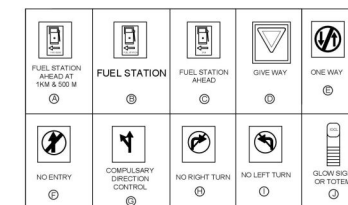
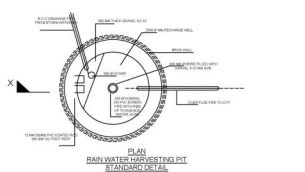
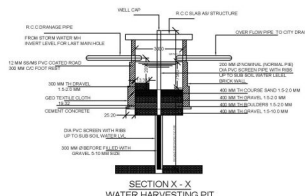
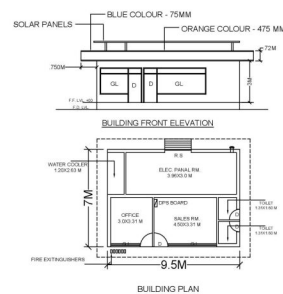




TYPICAL SECTION ON ACCESS ROAD



**SITE PLAN**  
SCALE N.T.S



TANK DATA CHART			
TANK NO.	SIZE OF TANK	TANK & PUMP	
		MS	HS
1X30 KL	2.1 X 6.25 M. LONG	HSB	
1X30 KL	2.1 X 6.25 M. LONG	MSD	
CONST. DETAIL OF UG TANK			
CAPACITY	(L)	(G)	(P.L)
15KL	5.0M	2.010M2	6MM
20KL	6.75M	2.012M2	6MM
SCHEDULE OF TANK AND PUMP			
PRODUCT	CAPACITY	NO. OF TANK	PUMPING NOZLES
MS	15KL	1NO	4NOCS
HSB	20KL	1NO	4NOCS

AREA STATEMENT:-

TOTAL AREA OF PLOT = 2390.54 SQ.M.  
PROPOSED COVD, AREA OF BUILDING = 63.83 SQ.M.

SITE INFORMATION:-

VILLAGE	LALPUR
ROAD	REWARI-GARHI BOLNI ROAD
KHEWAT NO./KHTAUNI NO.	18/19/2/1, 9/2/2
TEHSIL	REWARI
DISTRICT	REWARI
STATE	HARYANA
NEAR POLICE STATION	REWARI
NEAR RAILWAY STATION	REWARI

- |    |                                                                                                                   |
|----|-------------------------------------------------------------------------------------------------------------------|
| 1  | V-VENT PIPES WITH 4" OR 4.5" M.I.D. CLEAR END COVERED WITH 2 LAYERS OF BRASS WIRE GAUGE 1/8" MESH PER LINEAR FEET |
| 2  | F-FL FILLINGS FITTED TO GASKET LOOK COULD IN AIR TIGHT FITTING BRASS CAP FOR DECANTATION FROM TANK (LORR)         |
| 3  | ALL GASKETS FITTINGS ARE FLAME PROOF RESIST TO 2148                                                               |
| 4  | ALL DOORS OF BUILDING TO BE PROOF TO 2148                                                                         |
| 5  | NO REPAIR OR SURFACE DRAIN WITH IN OF THE TANKS AND DOW                                                           |
| 6  | PRESSURE TO BE USED FOR COOLING OF THE BUILDING                                                                   |
| 7  | DOORS AND PIPES WITH TWO LAYERS OF 100 MESH UNITS TWO COATS OF RED LEAD PAINT TO PROTECT AGENTS                   |
| 8  | FABRICATION DESIGN OF LOWER GROUND STORAGE TANK AND CONFORMING TO 1907 1992 AS PER CODE OF MGNR                   |
| 9  | ALL DIMENSIONS ARE IN MM. LAYERS OTHERWISE NOTED                                                                  |
| 10 | 8-8 BAND COUPLER TO NOT BE USED FOR EXPOSURE                                                                      |
| 11 | F-FLARE EXHAUSTOR - 10" M.I.D. AS PER APPROVAL OF CODE OF MGNR                                                    |
| 12 | ALL DIMENSIONS ARE IN MM. LAYERS OTHERWISE NOTED                                                                  |
| 13 | THE TEST SHOULD BE CONDUCTED AT A CONTROLLED PRESSURE OF 35 KG/CM <sup>2</sup> FOR 2 HOURS                        |
| 14 | NO TYPICAL TANKS TO BE USED FOR EXHAUSTOR                                                                         |
| 15 | FABRICATION THICKNESS OF SHELL PLATES AND END PLATE OF TANKS                                                      |
| 16 | END-8MM                                                                                                           |
| 17 | TANKS CONFORMING TO 125.831.4 OF THE PETROLEUM RULE-2002                                                          |
| 18 | ALL LIGHT POLES ARE FITTED AS PER APPROVAL OF CODE OF MGNR VIDE LETTER NO. PL/CH/101 DATED 26.11.1993             |
| 19 | ALL LIGHT POLES ARE FITTED AS PER APPROVAL OF CODE OF MGNR VIDE LETTER NO. PL/CH/101 DATED 26.11.1993             |
| 20 | ALL LIGHT POLES ARE FITTED AS PER APPROVAL OF CODE OF MGNR VIDE LETTER NO. PL/CH/101 DATED 26.11.1993             |
| 21 | ALL LIGHT POLES ARE FITTED AS PER APPROVAL OF CODE OF MGNR VIDE LETTER NO. PL/CH/101 DATED 26.11.1993             |
| 22 | ALL LIGHT POLES ARE FITTED AS PER APPROVAL OF CODE OF MGNR VIDE LETTER NO. PL/CH/101 DATED 26.11.1993             |
| 23 | ALL LIGHT POLES ARE FITTED AS PER APPROVAL OF CODE OF MGNR VIDE LETTER NO. PL/CH/101 DATED 26.11.1993             |
| 24 | ALL LIGHT POLES ARE FITTED AS PER APPROVAL OF CODE OF MGNR VIDE LETTER NO. PL/CH/101 DATED 26.11.1993             |
| 25 | ALL LIGHT POLES ARE FITTED AS PER APPROVAL OF CODE OF MGNR VIDE LETTER NO. PL/CH/101 DATED 26.11.1993             |
| 26 | ALL LIGHT POLES ARE FITTED AS PER APPROVAL OF CODE OF MGNR VIDE LETTER NO. PL/CH/101 DATED 26.11.1993             |
| 27 | ALL LIGHT POLES ARE FITTED AS PER APPROVAL OF CODE OF MGNR VIDE LETTER NO. PL/CH/101 DATED 26.11.1993             |
| 28 | ALL LIGHT POLES ARE FITTED AS PER APPROVAL OF CODE OF MGNR VIDE LETTER NO. PL/CH/101 DATED 26.11.1993             |
| 29 | ALL LIGHT POLES ARE FITTED AS PER APPROVAL OF CODE OF MGNR VIDE LETTER NO. PL/CH/101 DATED 26.11.1993             |
| 30 | ALL LIGHT POLES ARE FITTED AS PER APPROVAL OF CODE OF MGNR VIDE LETTER NO. PL/CH/101 DATED 26.11.1993             |
| 31 | ALL LIGHT POLES ARE FITTED AS PER APPROVAL OF CODE OF MGNR VIDE LETTER NO. PL/CH/101 DATED 26.11.1993             |
| 32 | ALL LIGHT POLES ARE FITTED AS PER APPROVAL OF CODE OF MGNR VIDE LETTER NO. PL/CH/101 DATED 26.11.1993             |
| 33 | ALL LIGHT POLES ARE FITTED AS PER APPROVAL OF CODE OF MGNR VIDE LETTER NO. PL/CH/101 DATED 26.11.1993             |
| 34 | ALL LIGHT POLES ARE FITTED AS PER APPROVAL OF CODE OF MGNR VIDE LETTER NO. PL/CH/101 DATED 26.11.1993             |
| 35 | ALL LIGHT POLES ARE FITTED AS PER APPROVAL OF CODE OF MGNR VIDE LETTER NO. PL/CH/101 DATED 26.11.1993             |
| 36 | ALL LIGHT POLES ARE FITTED AS PER APPROVAL OF CODE OF MGNR VIDE LETTER NO. PL/CH/101 DATED 26.11.1993             |
| 37 | ALL LIGHT POLES ARE FITTED AS PER APPROVAL OF CODE OF MGNR VIDE LETTER NO. PL/CH/101 DATED 26.11.1993             |
| 38 | ALL LIGHT POLES ARE FITTED AS PER APPROVAL OF CODE OF MGNR VIDE LETTER NO. PL/CH/101 DATED 26.11.1993             |
| 39 | ALL LIGHT POLES ARE FITTED AS PER APPROVAL OF CODE OF MGNR VIDE LETTER NO. PL/CH/101 DATED 26.11.1993             |
| 40 | ALL LIGHT POLES ARE FITTED AS PER APPROVAL OF CODE OF MGNR VIDE LETTER NO. PL/CH/101 DATED 26.11.1993             |
| 41 | ALL LIGHT POLES ARE FITTED AS PER APPROVAL OF CODE OF MGNR VIDE LETTER NO. PL/CH/101 DATED 26.11.1993             |
| 42 | ALL LIGHT POLES ARE FITTED AS PER APPROVAL OF CODE OF MGNR VIDE LETTER NO. PL/CH/101 DATED 26.11.1993             |
| 43 | ALL LIGHT POLES ARE FITTED AS PER APPROVAL OF CODE OF MGNR VIDE LETTER NO. PL/CH/101 DATED 26.11.1993             |
| 44 | ALL LIGHT POLES ARE FITTED AS PER APPROVAL OF CODE OF MGNR VIDE LETTER NO. PL/CH/101 DATED 26.11.1993             |
| 45 | ALL LIGHT POLES ARE FITTED AS PER APPROVAL OF CODE OF MGNR VIDE LETTER NO. PL/CH/101 DATED 26.11.1993             |
| 46 | ALL LIGHT POLES ARE FITTED AS PER APPROVAL OF CODE OF MGNR VIDE LETTER NO. PL/CH/101 DATED 26.11.1993             |
| 47 | ALL LIGHT POLES ARE FITTED AS PER APPROVAL OF CODE OF MGNR VIDE LETTER NO. PL/CH/101 DATED 26.11.1993             |
| 48 | ALL LIGHT POLES ARE FITTED AS PER APPROVAL OF CODE OF MGNR VIDE LETTER NO. PL/CH/101 DATED 26.11.1993             |
| 49 | ALL LIGHT POLES ARE FITTED AS PER APPROVAL OF CODE OF MGNR VIDE LETTER NO. PL/CH/101 DATED 26.11.1993             |
| 50 | ALL LIGHT POLES ARE FITTED AS PER APPROVAL OF CODE OF MGNR VIDE LETTER NO. PL/CH/101 DATED 26.11.1993             |
| 51 | ALL LIGHT POLES ARE FITTED AS PER APPROVAL OF CODE OF MGNR VIDE LETTER NO. PL/CH/101 DATED 26.11.1993             |
| 52 | ALL LIGHT POLES ARE FITTED AS PER APPROVAL OF CODE OF MGNR VIDE LETTER NO. PL/CH/101 DATED 26.11.1993             |
| 53 | ALL LIGHT POLES ARE FITTED AS PER APPROVAL OF CODE OF MGNR VIDE LETTER NO. PL/CH/101 DATED 26.11.1993             |
| 54 | ALL LIGHT POLES ARE FITTED AS PER APPROVAL OF CODE OF MGNR VIDE LETTER NO. PL/CH/101 DATED 26.11.1993             |
| 55 | ALL LIGHT POLES ARE FITTED AS PER APPROVAL OF CODE OF MGNR VIDE LETTER NO. PL/CH/101 DATED 26.11.1993             |
| 56 | ALL LIGHT POLES ARE FITTED AS PER APPROVAL OF CODE OF MGNR VIDE LETTER NO. PL/CH/101 DATED 26.11.1993             |
| 57 | ALL LIGHT POLES ARE FITTED AS PER APPROVAL OF CODE OF MGNR VIDE LETTER NO. PL/CH/101 DATED 26.11.1993             |
| 58 | ALL LIGHT POLES ARE FITTED AS PER APPROVAL OF CODE OF MGNR VIDE LETTER NO. PL/CH/101 DATED 26.11.1993             |
| 59 | ALL LIGHT POLES ARE FITTED AS PER APPROVAL OF CODE OF MGNR VIDE LETTER NO. PL/CH/101 DATED 26.11.1993             |
| 60 | ALL LIGHT POLES ARE FITTED AS PER APPROVAL OF CODE OF MGNR VIDE LETTER NO. PL/CH/101 DATED 26.11.1993             |
| 61 | ALL LIGHT POLES ARE FITTED AS PER APPROVAL OF CODE OF MGNR VIDE LETTER NO. PL/CH/101 DATED 26.11.1993             |
| 62 | ALL LIGHT POLES ARE FITTED AS PER APPROVAL OF CODE OF MGNR VIDE LETTER NO. PL/CH/101 DATED 26.11.1993             |
| 63 | ALL LIGHT POLES ARE FITTED AS PER APPROVAL OF CODE OF MGNR VIDE LETTER NO. PL/CH/101 DATED 26.11.1993             |
| 64 | ALL LIGHT POLES ARE FITTED AS PER APPROVAL OF CODE OF MGNR VIDE LETTER NO. PL/CH/101 DATED 26.11.1993             |
| 65 | ALL LIGHT POLES ARE FITTED AS PER APPROVAL OF CODE OF MGNR VIDE LETTER NO. PL/CH/101 DATED 26.11.1993             |
| 66 | ALL LIGHT POLES ARE FITTED AS PER APPROVAL OF CODE OF MGNR VIDE LETTER NO. PL/CH/101 DATED 26.11.1993             |
| 67 | ALL LIGHT POLES ARE FITTED AS PER APPROVAL OF CODE OF MGNR VIDE LETTER NO. PL/CH/101 DATED 26.11.1993             |
| 68 | ALL LIGHT POLES ARE FITTED AS PER APPROVAL OF CODE OF MGNR VIDE LETTER NO. PL/CH/101 DATED 26.11.1993             |
| 69 | ALL LIGHT POLES ARE FITTED AS PER APPROVAL OF CODE OF MGNR VIDE LETTER NO. PL/CH/101 DATED 26.11.1993             |
| 70 | ALL LIGHT POLES ARE FITTED AS PER APPROVAL OF CODE OF MGNR VIDE LETTER NO. PL/CH/101 DATED 26.11.1993             |
| 71 | ALL LIGHT POLES ARE FITTED AS                                                                                     |

DATE	REV.NO.	BRIEF DESCRIPTION OR REVISIONS MADE	CHEAKER
------	---------	-------------------------------------	---------



Indian Oil Corporation Limited  
(Marketing Division)  
Gurugram Divisional Office,

PROJECT :-
------------

PROPOSED RETAIL OUTLET AT VILLAGE- LALPUR, TEHSIL - REWARI,  
DISTT. REWARI. (HARYANA)

**TITLE :-**  
**PROPOSED RETAIL OUTLET PLAN FOR FILLING STATION ON REWARI-GARHI BOLNI**  
**ROAD AT VILLAGE- LALPUR, TEHSIL - REWARI, DISTT. REWARI, (HARYANA)**

PIN CODE NO	123401	SCALE	1:200
DRAWN BY.	SOKAL	DRAWING NO.	RWR / LALPUR /01

APPROVED BY:			
--------------	--	--	--

CHECKED BY.			
DATED	22.07.2024		

DATED	23.07.2021		
			PREPARED BY

	PREPARED BY:
--	--------------

[illegible]

SANDEEP KUMAR  
MOB. 999163818