



निर्गत के लिए नहीं NOT FOR EXPORT

OPEN SERIES MAP

No. G45T3

Scale 1:50,000

Gaya BIHAR G45S14 (72D/14)	G45T2 (72H/2)	Nawāda BIHAR G45T6 (72H/6)
G45S15 (72D/15)	G45T3 (72H/3)	Jhārkhand G45T7 (72H/7)
Chātra Jhārkhand G45S16 (72D/16)	G45T4 (72H/4)	Hazārībāg Jhārkhand G45T8 (72H/8)

भारतीय सर्वेक्षण विभाग SURVEY OF INDIA

1st Edition 2010.

Revised Price: Rs. 70/-

Rs. 118/-

CONVENTIONAL SYMBOLS

- Express highway; with toll; with bridge; with distance stone
- Roads, metalled; according to importance
- Roads, double carriageway; according to importance
- Unmetalled road. Cart-track. Pack-track with pass. Foot-path
- Streams; with track in bed; undefined. Canal
- Dams; masonry or rock-filled; earthwork. Weir
- River; dry with water channel; with island & rocks. Tidal river
- Submerged rocks. Shoal. Swamp. Reeds
- Wells; lined; unlined. Tube-well. Spring. Tanks; perennial; dry
- Embankments; road or rail; tank. Broken ground
- Railways, broad gauge; double; single with station; under constn.
- Railways, other gauges; double; single with distance stone; do.
- Mineral line or tramway. Kin. Cutting with tunnel
- Contours with sub-features. Rocky slopes. Cliffs
- Sand features: (1)flat. (2)sand-hill(permanent). (3)dunes(shifting)
- Towns or Villages; inhabited; deserted. Fort
- Huts; permanent; temporary. Tower. Antiquities
- Temple. Chhatri. Church. Mosque. Idgah. Tomb. Graves
- Lighthouse. Lightship. Buoys; lighted; unlighted. Anchorage
- Mine. Vine on trellis. Grass. Scrub
- Palm; palmyra; other. Plantain. Conifer. Bamboo. Other trees
- Salubrit; wooded. Surveyed tree
- International
- Site; demarcated; undemarcated
- district; subdivision; tahsil or taluk; forest
- Boundary pillars; surveyed; unlocated
- Heights; triangulated; station; point; approximate
- Bench-mark; geodetic; tertiary; canal
- Post office. Telegraph office. Overhead tank
- Rest house or inspection bungalow. Circuit house. Police station
- Camping ground. Forest; reserved; protected
- Speed names; administrative; locality or tribal
- Hospital. Dispensary. Veterinary Hospital / Dispensary
- Aerodrome. Helipad. Tourist site
- Power line; with pylons surveyed; with poles unsurveyed

REFERENCE

N/2 National Highway No. 2

NOTES :-

- Contours are approximate
- Heights are in metres and above Indian mean sea level
- A relative height - or - represents the approximate height, in metres between the top and bottom of a steep slope
- The triangulated heights and contours in this sheet have not been adjusted to the height of the spirit-levelled bench-marks and may not be strictly in accordance with them
- The kilometre stone numbers along roads are shown in start type, e.g., '5' whereas milestone numbers are shown in script type, e.g., '15'
- Cart-tracks along canals are jeepable in dry season. Permission to use these is required from the irrigation authorities
- Numerous unlined wells exist throughout the cultivated portions of this sheet; only the important ones have been shown
- Cultivation is periodic and dependent on rainfall

COMPILATION INDEX

A. Surveyed during 1977-78. Updated for major details during 2005-06.

Projection - UTM Datum - WGS 84

Magnetic Variation from True North about 1° West in 2005. (Decreasing by about 1" annually)

1:50,000



CONTOUR INTERVAL 20 METRES

For further details about this map, please contact

Director

Bihar Geo-Spatial Data Centre

Survey of India, 164, Sheikhpura House, Sheikhpura

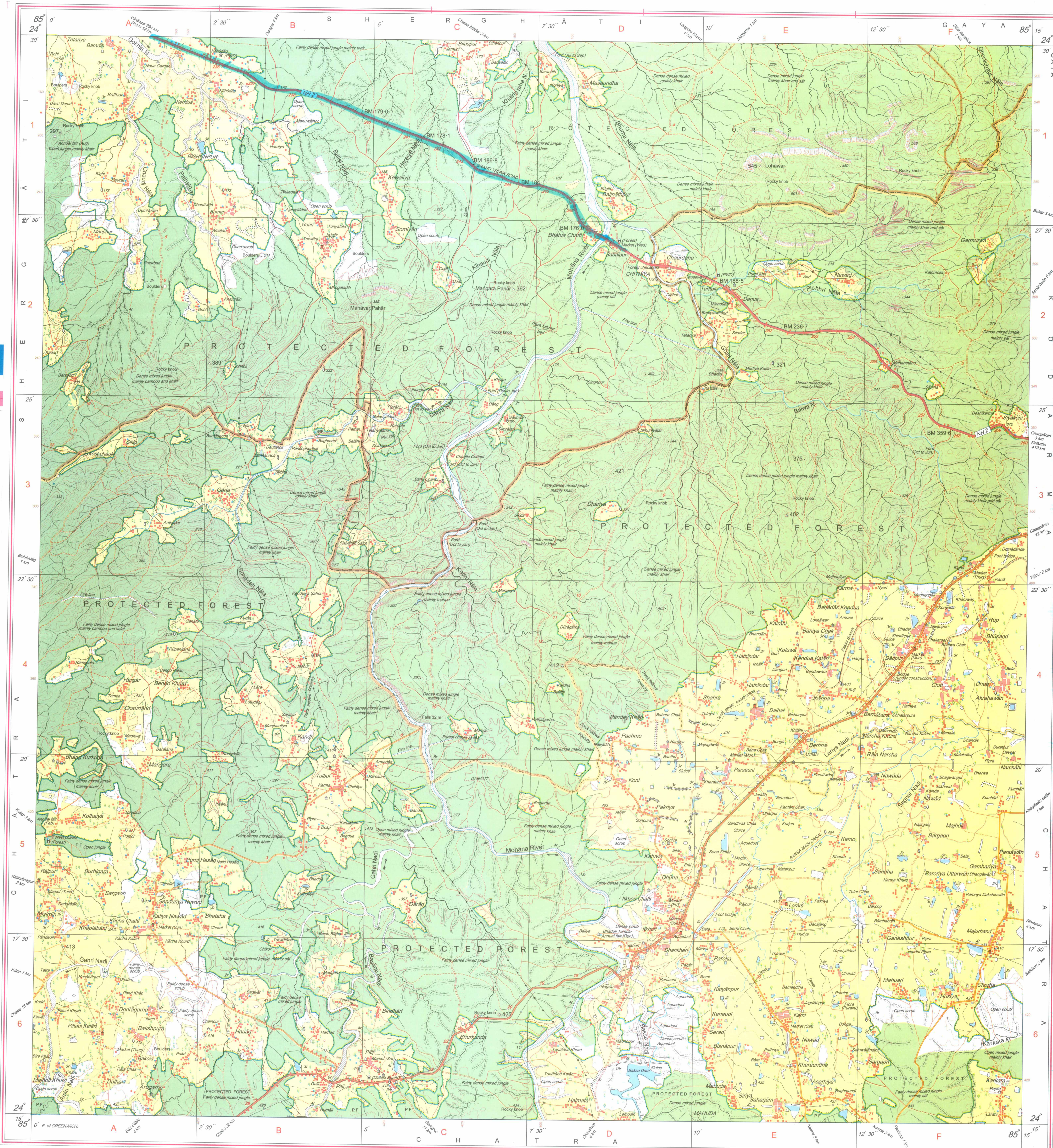
Patna - 800014.

Fax : 0612 - 2280265

WEBSITE - www.surveyofindia.gov.in

Reproduction in whole or part by any means is prohibited without the written permission of Survey of India, the National Mapping Agency.

GOVERNMENT OF INDIA COPYRIGHT, 2010.



REG. No. 4295-NPG D/10(BiharGDC-1:50,000)-1013/11.

भारत के सर्वेक्षण के निदेशन में प्रकाशित।
Published under the direction of Surveyor General of India,
Survey of India, Hāthībarkala Estate, Post Box No.37, Dehra Dūn-248001 (Uttarākhānd)
Department of Science & Technology, Government of India.

PRINTED AT THE NORTHERN PRINTING GROUP OF SURVEY OF INDIA

For, Reliance InfoComm Limited
Authorized Signatory