

No. G45S14
 Scale 1:50,000

G45S9 (72D/9)	G45S13 (72D/13)	G45T1 (72H/1)
Aurangabad BIHAR	Gaya BIHAR	
G45S10 (72D/10)	G45S14 (72D/14)	G45T2 (72H/2)
G45S11 (72D/11)	G45S15 (72D/15)	G45T3 (72H/3)
1 Jahanabad, Bihar 2 Kodama, JHARKHAND.	Chitra JHARKHAND	

भारतीय सर्वेक्षण विभाग SURVEY OF INDIA

1st Edition 2010. Price : Rs. 50/-

CONVENTIONAL SYMBOLS

Express highway with toll; with bridge; with distance stone	
Roads, metalled according to importance	
Roads, double cartway according to importance	
Unmetalled road. Cart-track. Pack-track with pass. Footpath	
Streams with track in bed; undefined. Canal	
Dams: masonry or rock-filled; earthen. Weir	
River dry with water channel; with island & rocks. Tidal river	
Submerged rocks. Shoal. Swamp. Reeds	
Wells: lined; unlined. Tube-well. Spring. Tank: perennial; dry	
Embankments: road or rail; tank. Broken ground	
Railways, broad gauge: double; single with station; under constn.	
Railways, other gauges: double; single with distance stone; do.	
Mineral line or tramway. Kin. Cutting with tunnel	
Contours with sub-features. Rocky slopes. Cliffs	
Sand features: (1) flat. (2) sand-hills/berm. (3) dunes/shifting	
Towns or Villages: inhabited; deserted. Fort	
Hut: permanent; temporary. Tower. Antiquities	
Temple. Chhatri. Church. Mosque. Dargah. Tomb. Graves	
Lighthouse. Lightship. Buoy: lighted; unlighted. Anchorage	
Mine. Vine on trellis. Grass. Scrub	
Palms: palmyra; other. Plantain. Conifer. Bamboo. Other trees	
Areas: cultivated; wooded. Surveyed line	
Boundary, International	
state; demarcated; undemarcated	
district; subdivision; tahsil or taluk; forest	
Boundary pillars: surveyed; uncollected	
Heights, triangulated; station; point; approximate	
Bench-mark: geodetic; tertiary; canal	
Post office. Telegraph office. Overhead tank	
Rest house or inspection bungalow. Circuit house. Police station	
Camping ground. Forest: reserved; protected	
Spaced names: administrative; locality or tribal	
Hospital. Dispensary. Veterinary Hospital / Dispensary	
Aerodrome. Helipad. Tourist site	
Power line: with pylons surveyed; with poles unsurveyed	

REFERENCE
 NH-2 National Highway No. 2

NOTES :-
 Heights are in metres and above Indian mean sea level.
 Contours are approximate.
 A relative height e.g., 40, represents the approximate height, in metres, between the top and bottom of a steep slope.
 The triangulated heights and contours in this sheet have not been adjusted to the heights of the spot-levelled bench-marks and may not be strictly in accordance with them.
 Cart-tracks and unmetalled roads are generally not shown in dry season. Permission to use those along canals is required from the irrigation authorities.
 A relative height e.g., 40, marked along a canal indicates the height of the top of the canal embankment above the adjacent country.
 Names of Protected Forests falling in this sheet have not been shown for want of reliable information. Numerous wells, tube-wells and field-bounds exist throughout the cultivated portions of this sheet, only the important ones are here shown.
 Tanks, shown dry, in this area usually contain water from July to March.

COMPILATION INDEX
 A Surveyed during 1975-76. Updated for major details during 2005-06.

Projection - UTM Datum - WGS 84
 Magnetic Variation from True North about 1° West in 2005.
 (Decreasing by about 1" annually).

Scale: 1:50,000
 500 m to 1 cm
 2 cm to 1 km

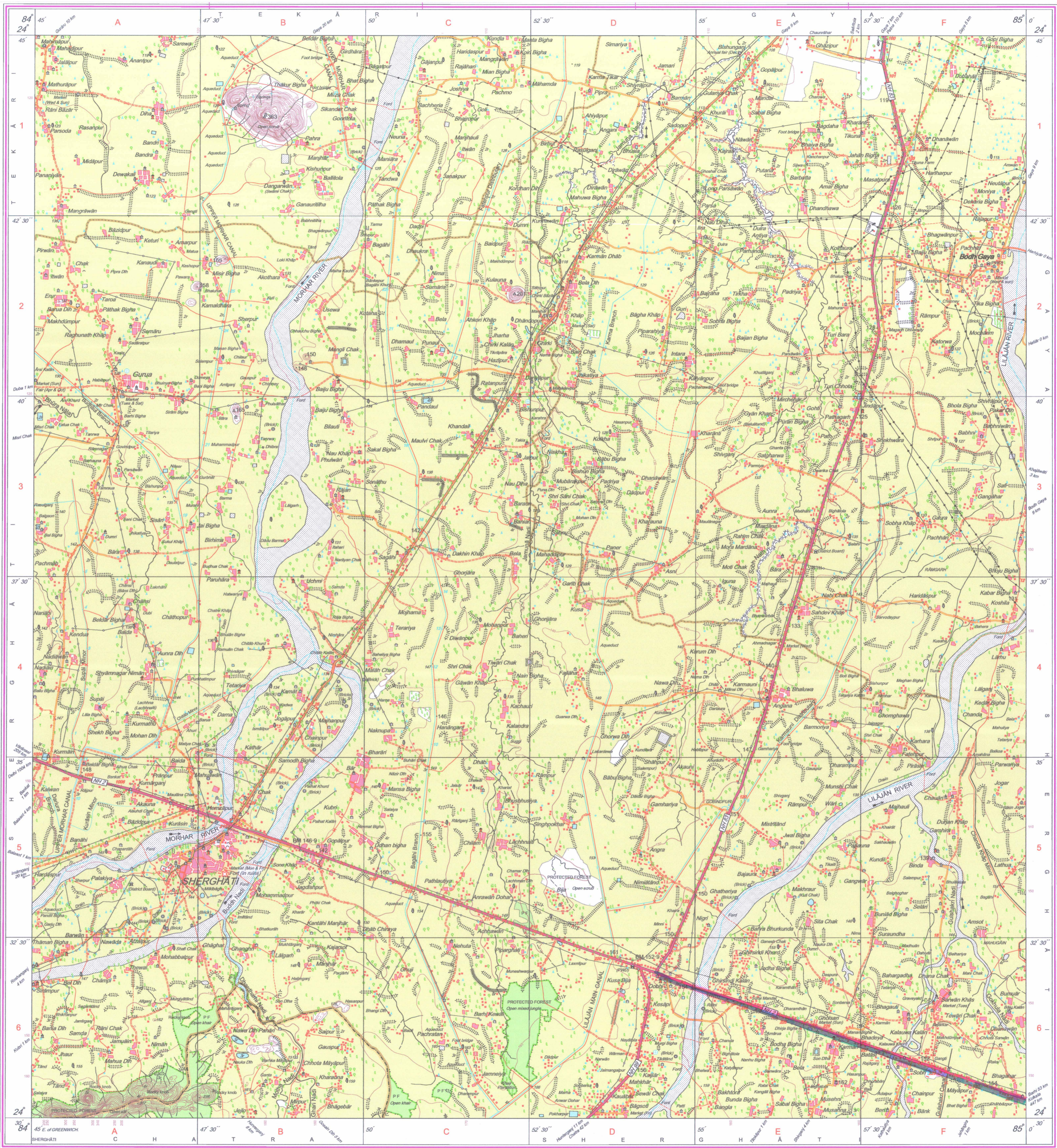
CONTOUR INTERVAL: 10 METRES

For further details about this map, please contact
 Director
 Bihar Geo-Spatial Data Centre
 Survey of India, 164, Sheikhpura House, Sheikhpura
 Patna.

WEBSITE - www.surveyofindia.gov.in

Reproduction in whole or part by any means is prohibited without the written permission of Survey of India, the National Mapping Agency.

GOVERNMENT OF INDIA COPYRIGHT, 2010.



For Reference to all concerned
 Authorized Signatory