



निर्गत के लिए नहीं NOT FOR EXPORT

OPEN SERIES MAP

No. G45T9

Scale 1:50,000

Nālanda BIHAR G45N8 (72G/8)	G45N12 (72G/12)	Sheikhpura BIHAR G45N16 (72G/16)
Gaya BIHAR G45T5 (72H/5)	G45T9 (72H/9) Nālanda BIHAR	Jamui BIHAR G45T13 (72H/13)
G45T6 (72H/6)	G45T10 (72H/10) Kodama JHARKHAND	G45T14 (72H/14)

1 Nālanda, BIHAR.
2 Lakhisarai, BIHAR.

भारतीय सर्वेक्षण विभाग

SURVEY OF INDIA

1st Edition 2010.

Price : Rs. 50/-

CONVENTIONAL SYMBOLS

Express highway; with toll; with bridge; with distance stone	
Roads, metalled; according to importance	
Roads, double cartway; according to importance	
Unmetalled road. Cart-track. Pack-track with pass. Foot-path	
Streams with track in bed; underlined. Canal	
Dams: masonry or rock-filled; earthwork. Weir	
River: dry with water channel; with island & rocks. Tidal river	
Submerged rocks. Shoal. Swamp. Reeds	
Wells: lined; unlined. Tubewell. Spring. Tank. Perennial; dry	
Embankments: road or rail; tank. Broken ground	
Railways, broad gauge: double; single with station; under constr.	
Railways, other gauges: double; single with distance stone; do.	
Mineral line or tramway. Kin. Cutting with tunnel	
Contours with sub-features. Rocky slopes. Cliffs	
Sand features (1) flat. (2) sand-hills (permanent). (3) dunes (shifting)	
Towns or Villages: inhabited; deserted. Fort	
Huts; permanent; temporary. Tower. Antiquities	
Temple. Chhatra. Church. Mosque. Igloo. Tomb. Graves	
Lighthouse. Lightship. Buoy; lighted; unlighted. Anchorage	
Mine. Vine on twigs. Grass. Scrub	
Palms; palmys; other. Plantain. Conifer. Bamboo. Other trees	
Areas: cultivated; wooded. Surveyed tree	
Boundary, international	
state; demarcated; undemarcated	
district; subdivision; tahsil or taluk; forest	
Boundary pillars: surveyed; unlocated	
Heights, triangulated; station; point; approximate	
Bench-mark: geodetic; tertiary; canal	
Post office. Telegraph office. Overhead tank	
Rest house or inspection bungalow. Circuit house. Police station	
Camping ground. Forest: reserved; protected	
Spaced names: administrative; locality or tribal	
Hospital. Dispensary. Veterinary. Hospital / Dispensary	
Aerodrome. Helipad. Tourist site	
Power line: with pylons surveyed; with poles unsurveyed	

REFERENCES

NH 31 National Highway No. 31 SH 8 State Highway No. 8

NOTES

Heights are in metres and above Indian mean sea level.
Contours are approximate.
A relative height, e.g., 4.2 represents the approximate height, in metres, between the top and bottom of a steep slope.
Wells and tube-wells are numerous throughout the sheet; only the important ones have been shown.
Tanks, shown dry in this area usually contain water from July to December.
Numerous field-bounds of less than 2 metres in height occur throughout the cultivated areas.
Forest boundaries are not demarcated but have been surveyed as pointed out by the local officials on the ground.
Unmetalled roads and cart-tracks along canals are generally motorable in dry season.
Permission to use these is required from irrigation authorities.
The triangulated heights and contours in this sheet have not been adjusted to the heights of the spirit-levelled bench-marks and may not be strictly in accordance with them.
This sheet has been compiled from 1:25,000 scale survey.

COMPILATION INDEX

A. Surveyed during 1976-77. Updated for major details during 2005-06.

Projection - UTM Datum - WGS 84

Magnetic Variation from True North about 1/2° West in 2005.
(Decreasing by about 1' annually).

1:50,000

500 m to 1 cm 2 cm to 1 km
Metres 1000 500 0 1 2 3 Kilometres

CONTOUR INTERVAL 10 METRES

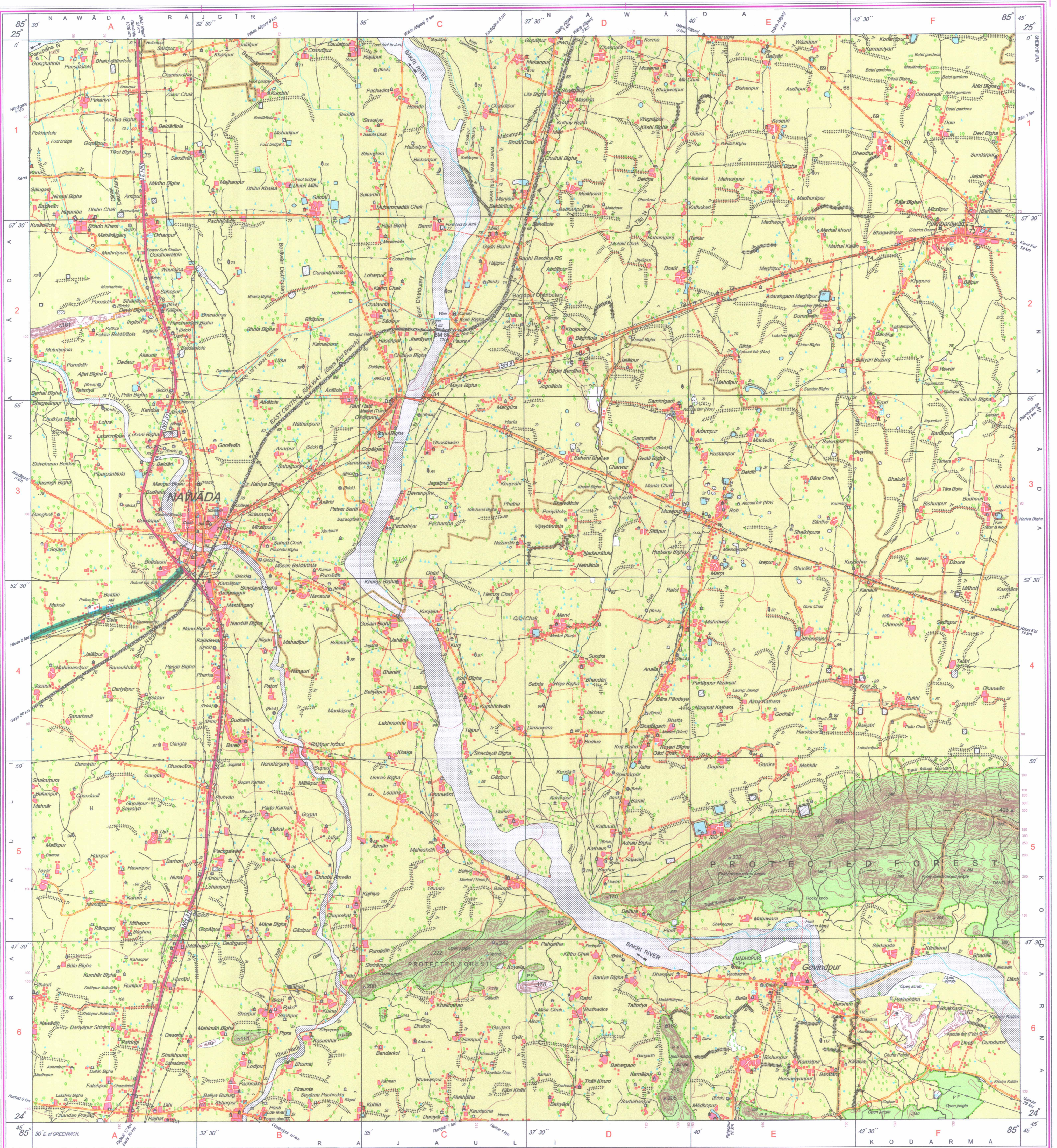
For further details about this map, please contact

Director
Bihar Geo-Spatial Data Centre
Survey of India, 164, Sheikhpura, House, Sheikhpura
Patna.

WEBSITE - www.surveyofindia.gov.in

Reproduction in whole or part by any means is prohibited
without the written permission of Survey of India, the
National Mapping Agency.

GOVERNMENT OF INDIA COPYRIGHT, 2010.



REG. No. JWP0 D710 (Bihar GDC-1:50,000)

भारत के सर्वेक्षण के दिशान में जारी,
Published under the direction of Surveyor General of India,
Survey of India, Hātībarkala Estate, Post Box No. 37, Dehra Dūn-248001 (Uttarakhand)
Department of Science & Technology, Government of India.

PRINTED AT THE WESTERN PRINTING GROUP OF SURVEY OF INDIA.

For Reliance Info-Comm Limited

Authorized Agency