

Area Minimum Certificate

Certified that the proposed 1.9033 Ha forest area for diversion is the minimum and essentially required for the Purpose of **"Diversion of 1.904 ha of forest land in Bellampally division proposed for construction of 11 kv transmission line for the release of 1 no 96 HP NDS load to water grid department for 24 hrs supply from existing tandur MHQ feeder in Tandur Mandal in Bellampally division in favour of TSNPDCL."** Also certified that any other forest land has not taken for this project. We also hereby undertake that no taking of fresh forest land shall be carried out during execution of the project.

Break up of forest land required:

Division	Block Name	Length_m	*RoW_m	Area_ha
Bellampally	Madaram	2720.38	7.00	1.904



Divisional Engineer

Operation ,Bellampally.

Divisional Engineer Elec

Operation/TSNPDCL

Bellampally

"COUNTERSIGNED"



Superintending Engineer,

Superintending Engineer
Operation, Mancherla,
Operation Circle, TSNPDCL
MANCHERLA

Make And Model of the ETS & DGPS/GNSS Instruments

It is certified that the **ETS & DGPS/ GNSS** Survey was carried out through an outsourcing agency. Make and Model of the ETS instruments are Topcon hiper sr and Leica 1200 series. The make and model of the DGPS/GNSS instruments are Trimble and Leica 1200 series

[Handwritten Signature]

Divisional Engineer

Operation ,Bellampally,

Divisional Engineer Elec
Operation/TSNPDCL
Bellampally

"COUNTERSIGNED"

[Handwritten Signature]

Superintending Engineer,

Superintending Engineer
Operation, Mancherial.
Operation / TSNPDCL
Mancherial

Undertaking

To pay cost of raising and maintenance of Compensatory Afforestation

We here by Undertake to pay the cost of raising and maintenance of Compensatory Afforestation (Including raising and maintenance of plantations, aided natural regeneration, SMC works etc.,) over non-forest land offered to forest department, as and when demanded by the forest authorities and also undertake to pay the additional amount if any due to escalation or any other charges at a later date as per the demand raised by the forest authorities in respect of **"Diversion of 1.904 ha of forest land in Bellampally division proposed for construction of 11 kv transmission line for the release of 1 no 96 HP NDS load to water grid department for 24 hrs supply from existing tandur MHQ feeder in Tandur Mandal in Bellampally division in favour of TSNPDCL."**

Break up of forest land required:

Division	Block Name	Length_m	*RoW_m	Area_ha
Bellampally	Madaram	2720.38	7.00	1.904



Divisional Engineer

Operation, Bellampally,

Divisional Engineer Elec
Operation/TSNPDCL
Bellampally

"COUNTERSIGNED"



Superintending Engineer,
Superintending Engineer
Operation Circle, TSNPDCL
MANCHERIAL

Undertaking for unqualified commitment from project authority to pay cost of extraction of tree growth

We here by Undertake to pay the cost of exploitation of tree growth of the forest land proposed for diversion under the project as and when demanded by the forest authorities and also undertake to pay the additional amount if any due to escalation or any other charges at a later date as per the demand raised by the forest authorities in respect of of **"Diversion of 1.904 ha of forest land in Bellampally division proposed for construction of 11 kv transmission line for the release of 1 no 96 HP NDS load to water grid department for 24 hrs supply from existing tandur MHQ feeder in Tandur Mandal in Bellampally division in favour of TSNPDCL."**

Break up of forest land required:

Division	Block Name	Length_m	*RoW_m	Area_ha
Bellampally	Madaram	2720.38	7.00	1.904


Divisional Engineer

Operation, Bellampally,

Divisional Engineer Elec
Operation/TSNPDCL
Bellampally

"COUNTERSIGNED"


Superintending Engineer,

Superintending Engineer
Operation, Mancherial
Operation, TSNPDCL
MANCHERIAL

To Pay Net Present Value

We here by Undertake to pay Net Present Value (NPV) as per guidelines under Forest (Conservation) Act, 1980 and Wildlife (Protection) Act, 1972 in accordance with the orders of the Hon'ble Supreme Court of India/State Govt and MoEF in respect of **"Diversion of 1.904 ha of forest land in Bellampally division proposed for construction of 11 kv transmission line for the release of 1 no 96 HP NDS load to water grid department for 24 hrs supply from existing tandur MHQ feeder in Tandur Mandal in Bellampally division in favour of TSNPDCL."**

We also hereby undertake to pay differential NPV Amount if any, due to escalation or revision of NPV, as and when demanded by the Forest Department.

Break up of forest land required:

Division	Block Name	Length_m	*RoW_m	Area_ha
Bellampally	Madaram	2720.38	7.00	1.904


Divisional Engineer

Operation, Bellampally,

Divisional Engineer Elec
Operation/TSNPDCL
Bellampally

"COUNTERSIGNED"


Superintending Engineer,
Operation, Mancherial,
Operation Circle, TSNPDCL
MANCHERIAL

To Pay Addl. Cost of Net Present Value (NPV)

We here by Undertake to pay Net Present Value (NPV) as per guidelines under Forest (Conservation) Act, 1980 and Wildlife (Protection) Act, 1972 in accordance with the orders of the Hon'ble Supreme Court of India/State Govt and MoEF in respect of of **"Diversion of 1.904 ha of forest land in Bellampally division proposed for construction of 11 kv transmission line for the release of 1 no 96 HP NDS load to water grid department for 24 hrs supply from existing tandur MHQ feeder in Tandur Mandal in Bellampally division in favour of TSNPDCL."**

We also hereby undertake to pay differential NPV Amount if any, due to escalation or revision of NPV, as and when demanded by the Forest Department.

Break up of forest land required:

Division	Block Name	Length_m	*RoW_m	Area_ha
Bellampally	Madaram	2720.38	7.00	1.904


Divisional Engineer

Operation ,Bellampally,

Divisional Engineer Elec
Operation/TSNPDCL
Bellampally

"COUNTERSIGNED"


Superintending Engineer,
Superintending Engineer
Operation, Mancherial
Operation Circle, TSNPDCL
MANCHERIAL

Non Violation Certificate

Certified that no work has been carried out in violation of F©Act, 1980 and W(P) Act, 1972 in the proposed forest area for **"Diversion of 1.904 ha of forest land in Bellampally division proposed for construction of 11 kv transmission line for the release of 1 no 96 HP NDS load to water grid department for 24 hrs supply from existing tandur MHQ feeder in Tandur Mandal in Bellampally division in favour of TSNPDCL."**

Break up of forest land required:

Division	Block Name	Length_m	*RoW_m	Area_ha
Bellampally	Madaram	2720.38	7.00	1.904



Divisional Engineer

Operation, Bellampally,

Divisional Engineer Elec
Operation/TSNPDCL
Bellampally

"COUNTERSIGNED"



Superintending Engineer,
Superintending Engineer
Operation Circle, TSNPDCL
MANCHERIAL

Certificate

It is certified that, all the possibilities to avoid forest land for the project have been explored and it is found that no alternative suitable non-forest land is technically feasible and viable to that part of the work for which diversion has been proposed for **"Diversion of 1.904 ha of forest land in Bellampally division proposed for construction of 11 kv transmission line for the release of 1 no 96 HP NDS load to water grid department for 24 hrs supply from existing tandur MHQ feeder in Tandur Mandal in Bellampally division in favour of TSNPDCL."**

Break up of forest land required:

Division	Block Name	Length_m	*RoW_m	Area_ha
Bellampally	Madaram	2720.38	7.00	1.904



Divisional Engineer

Operation, Bellampally

Divisional Engineer Elec

Operation/TSNPDCL

Bellampally

"COUNTERSIGNED"



Superintending Engineer,

Superintending Engineer

Operation Circle, TSNPDCL

MANCHERIAL

Undertaking

The user agency is hereby undertake that no labor camp shall be established on the forest lands during the construction of the work in the proposed forest area for **“Diversion of 1.904 ha of forest land in Bellampally division proposed for construction of 11 kv transmission line for the release of 1 no 96 HP NDS load to water grid department for 24 hrs supply from existing tandur MHQ feeder in Tandur Mandal in Bellampally division in favour of TSNPDCL.”**

Break up of forest land required:

Division	Block Name	Length_m	*RoW_m	Area_ha
Bellampally	Madaram	2720.38	7.00	1.904



Divisional Engineer

Operation ,Bellampally

Divisional Engineer Eloc

Operation/TSNPDCL

Bellampally

“COUNTERSIGNED”



Superintending Engineer,

Superintending Engineer

Operation Circle, TSNPDCL

MANCHERIAL

DETAILS OF SURVEY INSTRUMENTS USED

S.NO	NAME OF THE AGENCY	INSTRUMENTS USED	PERSONS INVOLVED	PERIOD OF SURVEY
1	Vardhaman Engineers and consultancy	DGPS: OMNISTAR (Trimble), LEICA	Amarendher, Praveen, Upendher	AUGUST-18


Divisional Engineer

Operation, Bellampally,

Divisional Engineer Elec
Operation/TSNPDCL
Bellampally

"COUNTERSIGNED"



Superintending Engineer,

Superintending Engineer
Operation, Mancherial
Operation Circle, TSNPDCL
MANCHERIAL

Area statement

“Proposed Construction of 11 KV 3 Wire line along the forest existing in Madaram RF between Tandur MHQ Feeder of 33/11 KV SS to Tandur Village with connected lines Under (Telangana Drinking Water Supply Project (Mission Bhagiratha).”

SET	DIVISION	BEAT	SECTION	BLOCK	COM.NO	LENGTH.M	WIDTH	AREA-HA
1	BELLAMPALLY	MADARAM	MADARAM	MADARAM	308	2720.38	7	1.904
TOTAL AREA REQUIRED IN HA							1.904	


Divisional Engineer
Operation Mancheria,
Divisional Engineer Elec
Operation/TSNPDCL
Bellampally

“COUNTERSIGNED”


Superintending Engineer,
Operation, Mancheria.
Superintending Engineer
Operation Circle, TSNPDCL
MANCHERIAL

FLOW DIAGRAM

NORTHERN POWER DISTRIBUTION COMPANY OF TELANGANA Limited

Mancherial District

Tandur MHQ feeder

Madaram RF

Water Grid Pump House

Item	Legend
11 kV Line in Non-Forest	_____
11 kV Line in Forest	_____

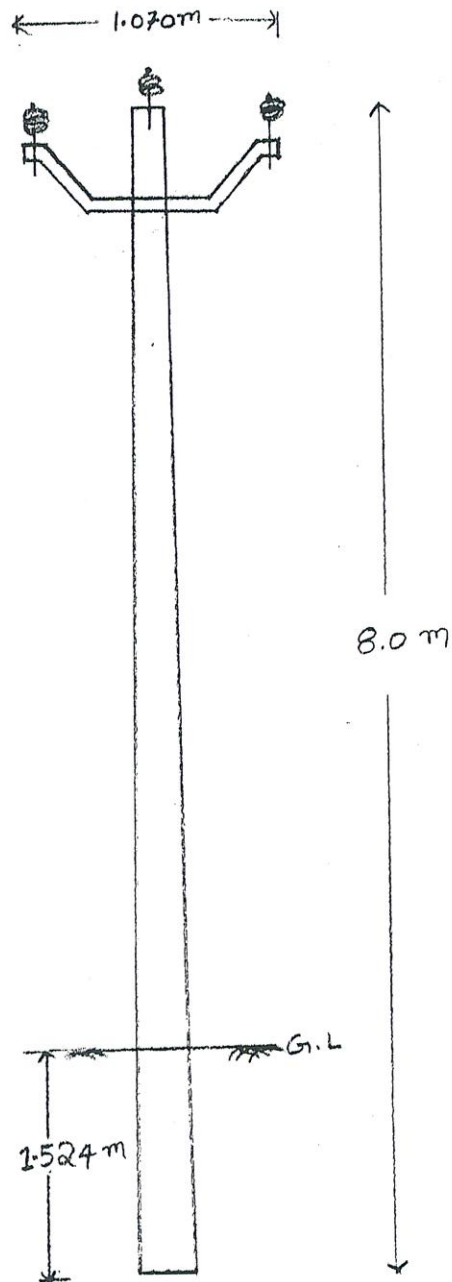
R. Prasad
Divisional Engineer Elec
Operation/TSNPDCL
Bellampally

M. B. N. S. R.
Superintending Engineer
Operation Circle, TSNPDCL
MANCHERIAL

CROSS SECTION

NORTHERN POWER DISTRIBUTION COMPANY OF TELANGANA Limited

Mancherla District



R. Gaur

Divisional Engineer Elec
Operation/TSNPDCL
Dahamchally

R. S. Sahu

Superintending Engineer
Operation Circle, TSNPDCL
MANCHERLA

ALL DIMENSIONS ARE IN METRES

UNLESS OTHERWISE SPECIFIED