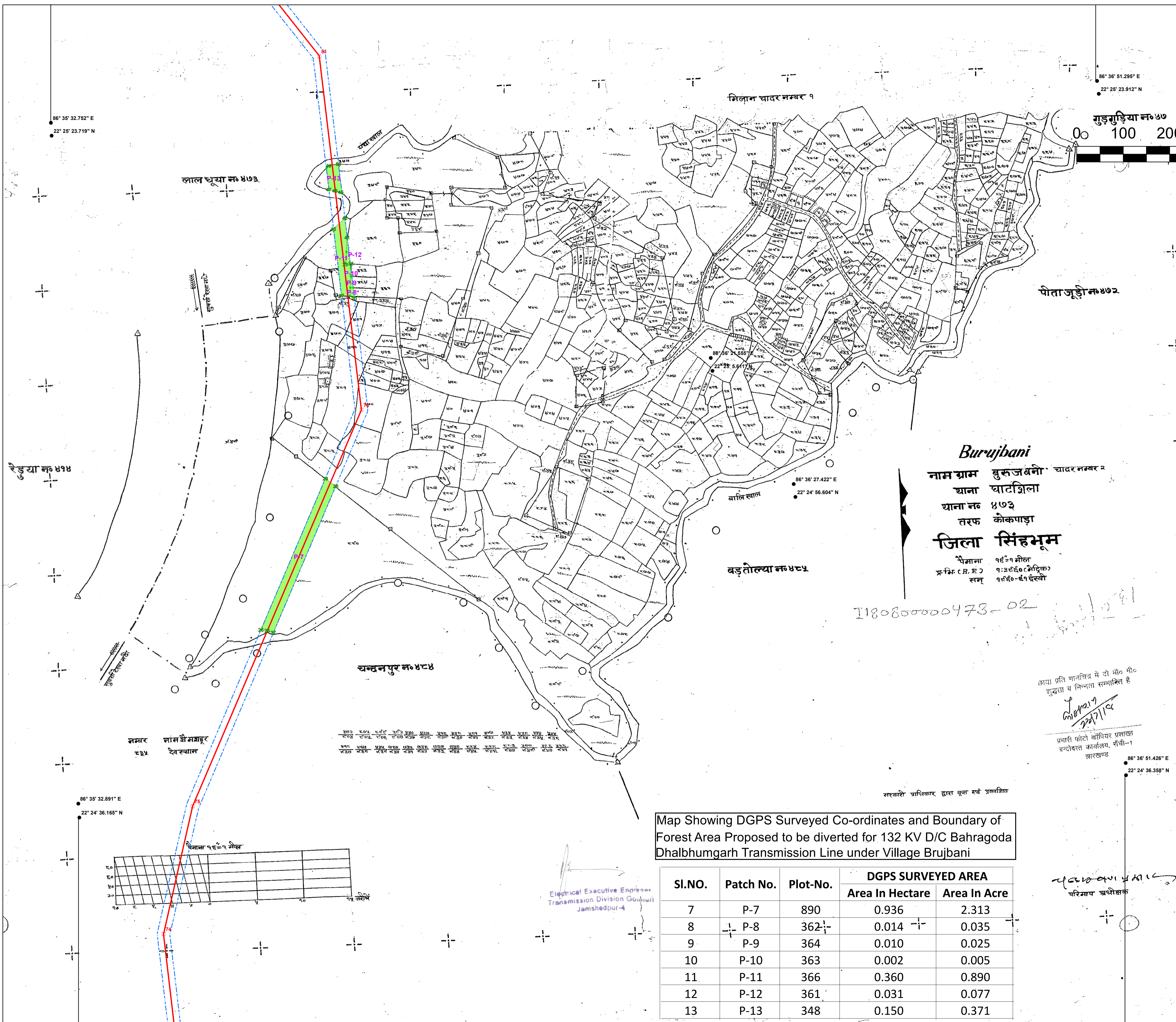
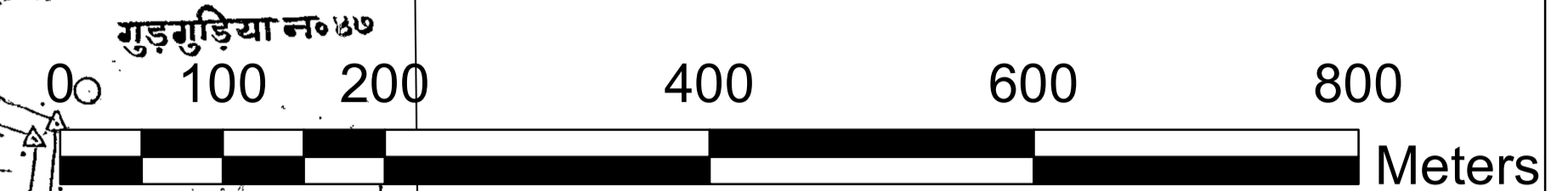
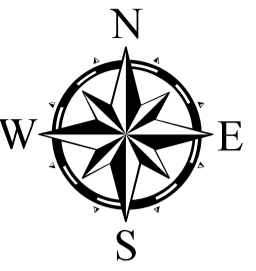


Brujbani

SCALE 1:3960
1CM.= 39.6M.

LEGEND



Burujbani
 नाम ग्राम बुरुजबनी चादर नम्बर २
 थाना घाटशिला
 थाना नं ४७३
 तरफ कोकपाड़ा
जिला सिंहभूम
 पैमाना १ ई=१ मील
 प्र-मि-र C.H. इ-७
 सन् १९६०-६१ ईस्वी

118080000473-02

आप प्रति मानचित्र में दो मी० मी०
 शुद्धता व निश्चिता सम्मानित है
 22/7/19

प्रमारी फोटो कॉपीयर प्रकाश
 चन्द्रदेवत कार्यालय, रैली-1
 झारखण्ड

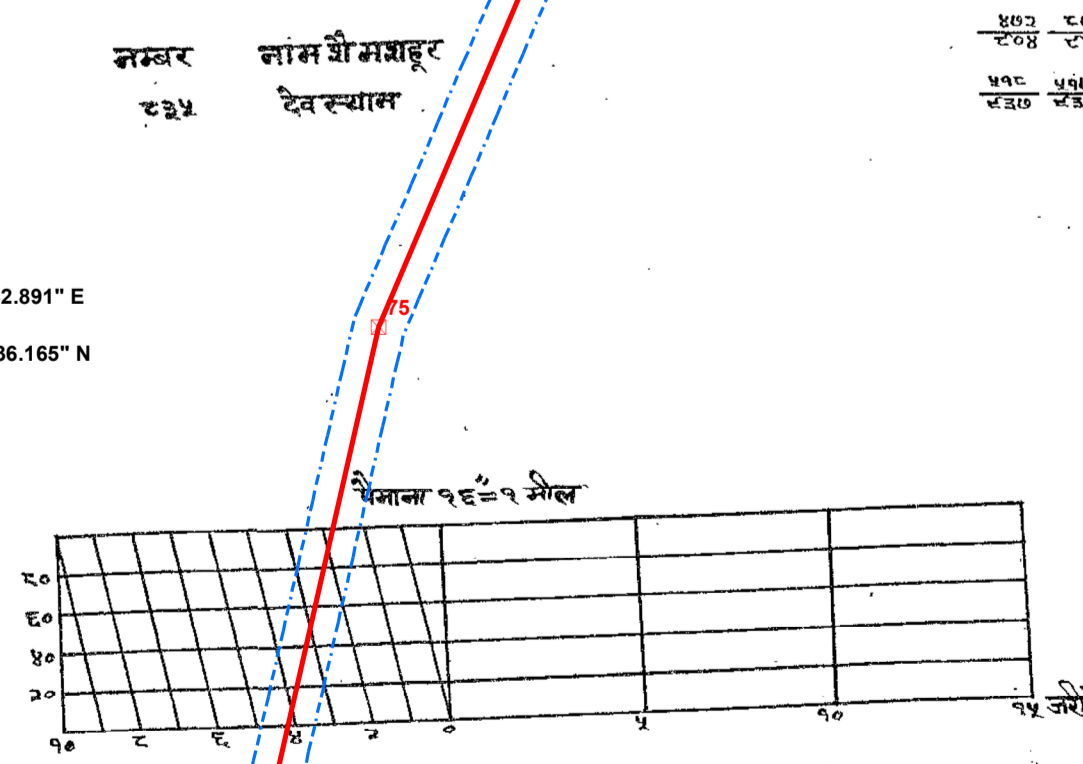
नक्शेकार प्रविष्टिकार द्वारा पुनः सर्वे प्रकाशित

Map Showing DGPS Surveyed Co-ordinates and Boundary of Forest Area Proposed to be diverted for 132 KV D/C Bahragoda Dhalbhumgarh Transmission Line under Village Brujbani

Sl.NO.	Patch No.	Plot-No.	DGPS SURVEYED AREA	
			Area In Hectare	Area In Acre
7	P-7	890	0.936	2.313
8	P-8	362	0.014	0.035
9	P-9	364	0.010	0.025
10	P-10	363	0.002	0.005
11	P-11	366	0.360	0.890
12	P-12	361	0.031	0.077
13	P-13	348	0.150	0.371

Change Point	UTM CO-ORDINATES		GEO GRAPHIC CO-ORDINATES	
	Easting	Northing	Longitude	Lattude
PATCH-7				
25	458462.653	2478628.961	22° 24.797' N	86° 35' 47.076" E
26	458475.817	2478626.743	22° 24.796' N	86° 35' 47.537" E
27	458488.662	2478622.032	22° 24.793' N	86° 35' 47.987" E
28	458635.31	2478930.617	22° 24.961' N	86° 35' 53.087" E
29	458613.719	2478947.823	22° 24.970' N	86° 35' 52.331" E
PATCH-8				
30	458691.256	2479334.69	22° 25.180' N	86° 35' 55.007" E
31	458682.125	2479336.918	22° 25.181' N	86° 35' 54.687" E
32	458683.585	2479354.363	22° 25.191' N	86° 35' 54.736" E
33	458689.879	2479354.076	22° 25.191' N	86° 35' 54.957" E
PATCH-9				
32	458683.585	2479354.363	22° 25.191' N	86° 35' 54.736" E
33	458689.879	2479354.076	22° 25.191' N	86° 35' 54.957" E
34	458688.272	2479378.679	22° 25.204' N	86° 35' 54.898" E
35	458685.478	2479378.687	22° 25.204' N	86° 35' 54.800" E
PATCH-10				
34	458688.272	2479378.679	22° 25.204' N	86° 35' 54.898" E
35	458685.478	2479378.687	22° 25.204' N	86° 35' 54.800" E
36	458686.406	2479396.577	22° 25.214' N	86° 35' 54.831" E
PATCH-11				
31	458682.125	2479336.918	22° 25.181' N	86° 35' 54.687" E
32	458683.585	2479354.363	22° 25.191' N	86° 35' 54.736" E
35	458685.478	2479378.687	22° 25.204' N	86° 35' 54.800" E
36	458686.406	2479396.577	22° 25.214' N	86° 35' 54.831" E
38	458686.026	2479405.439	22° 25.218' N	86° 35' 54.817" E
39	458675.43	2479406.957	22° 25.219' N	86° 35' 54.446" E
40	458678.654	2479430.355	22° 25.232' N	86° 35' 54.557" E
41	458681.527	2479461.789	22° 25.249' N	86° 35' 54.654" E
42	458678.21	2479503.52	22° 25.272' N	86° 35' 54.534" E
43	458653.164	2479478.259	22° 25.258' N	86° 35' 53.661" E
PATCH-12				
38	458686.026	2479405.439	22° 25.218' N	86° 35' 54.817" E
39	458675.43	2479406.957	22° 25.219' N	86° 35' 54.446" E
40	458678.654	2479430.355	22° 25.232' N	86° 35' 54.557" E
41	458681.527	2479461.789	22° 25.249' N	86° 35' 54.654" E
PATCH-13				
45	458668.726	2479560.174	22° 25.302' N	86° 35' 54.197" E
46	458658.965	2479563.243	22° 25.304' N	86° 35' 53.856" E
47	458645.898	2479566.24	22° 25.306' N	86° 35' 53.398" E
48	458642.198	2479611.393	22° 25.330' N	86° 35' 53.265" E
49	458647.76	2479617.071	22° 25.333' N	86° 35' 53.459" E
50	458668.733	2479620.162	22° 25.335' N	86° 35' 54.192" E

- Transmission Line
- AP NO.
- - - ROUTE BUFFER
- Forest Patch



Electrical Executive Engineer
 Transmission Division Guwahati
 Jamshedpur-4