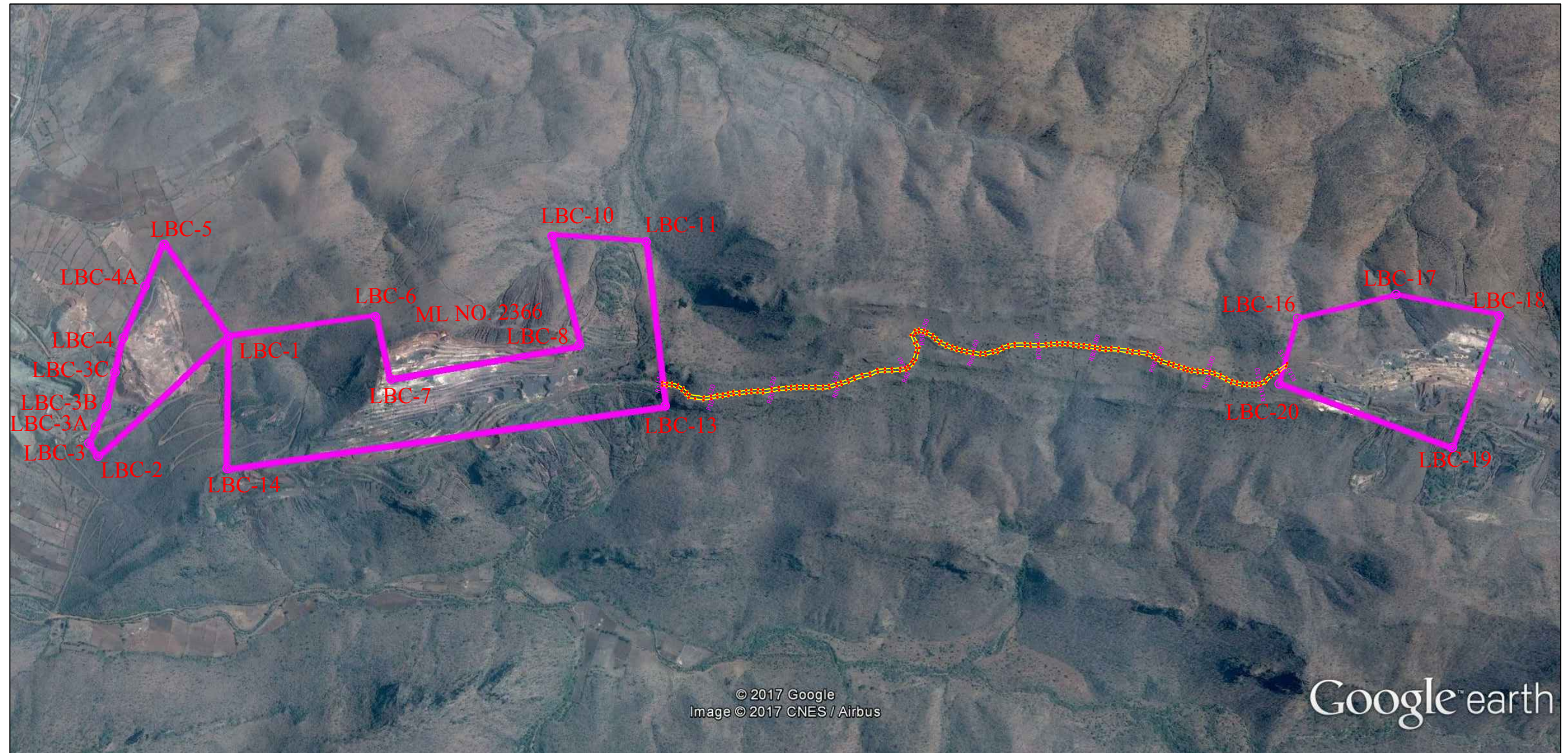

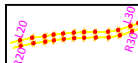


GOOGLE MAP SHOWING THE BHADRA IRON ORE MINE ALONG WITH APPROACH ROAD OF M/s JSW STEEL LTD.
(M/S TML M.L.No 2365 OVER AN EXTENT OF 130.53 HA, ERSTWHILE LESSEE) SITUATED IN D.M BLOCK FOREST, SANDUR SOUTH
RANGE, NEAR TARANAGARA, LINGADAHALLI, UBBALAGUNDI VILLAGES, SANDUR TALUK ,BALLARI DISTRICT/DIVISION
,KARNATAKA STATE.(FOR FC =130.53HA & PROPOSED AREA FOR APPROACH ROAD =3.05HA.)



Legend

-  *ML Boundary of Bellary iron ore mines of M/s. Tungabhadra Minerals Pvt. Ltd, ML No. 2365 (Bhadra iron ore mine of m/s JSW Steel Ltd. after auction)*
-  *Approach road.*

Project Proponent
JSW Steel Ltd.