



H.P. Power Transmission Corporation Limited
(A State Govt. Undertaking)
Himfed Bhawan, Panjari, Below Old MLA Quarters,
Shimla-171005

NO. HPPTCL/Interconnection-Vol-VII/2017- 10149-50

Dated:- 15/12/17

To

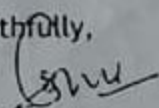
Chief Engineer (Energy),
Directorate of Energy, GoHP,
Shanti Bhawan, Phase-III, Sector-VI,
New Shimla-171009.

Subject: - Evacuation arrangement for Pharari (2 MW) HEP

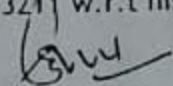
Sir:

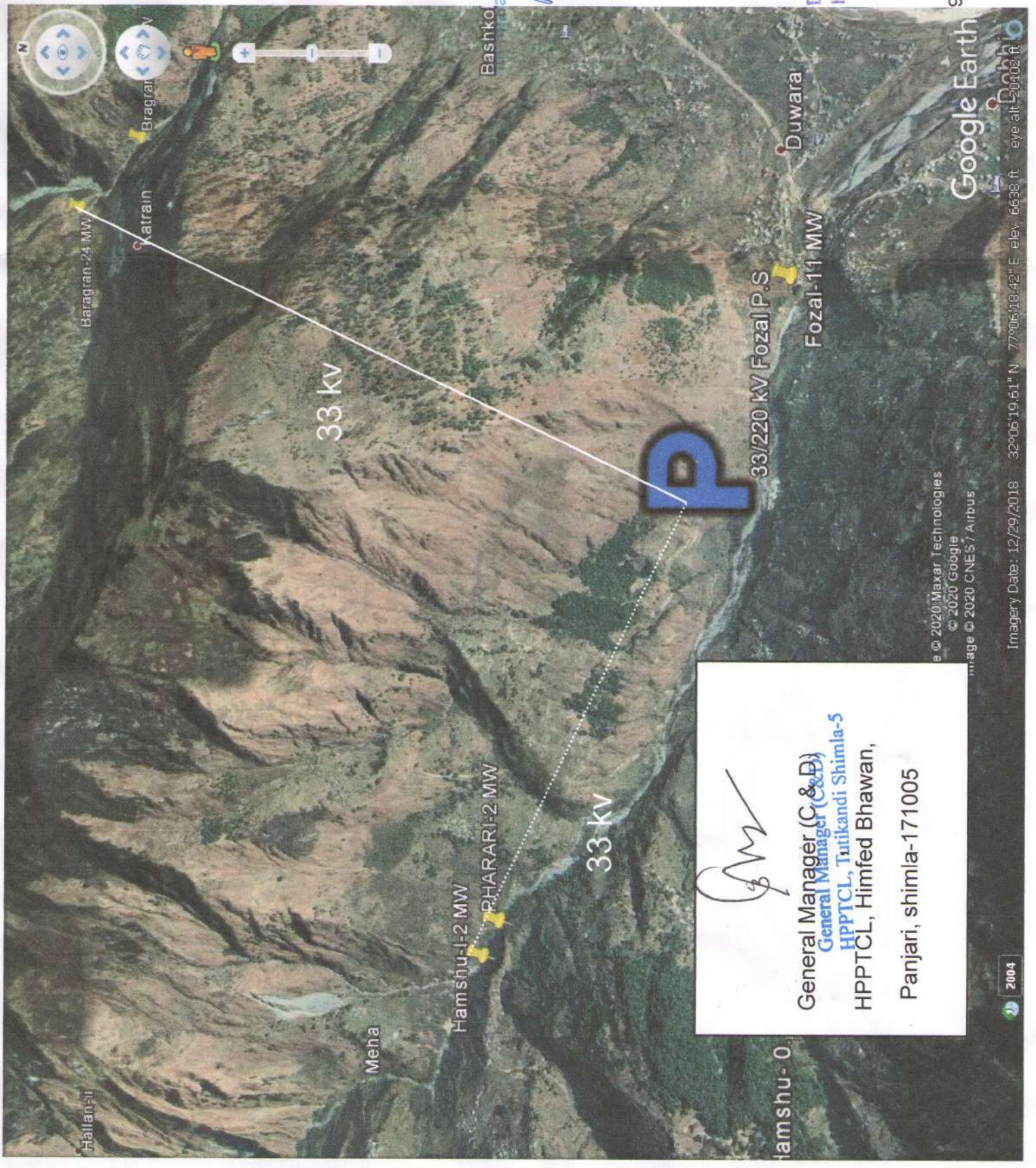
Approved evacuation arrangement for Pharari HEP envisages construction of 33 kV S/C line in joint mode with Hamsu-I HEP to 33/220 kV Phojal substation of HPPTCL. IPP vide his letter dated 12.12.2017 (copy enclosed) has requested to evacuate power of Pharari HEP by laying 33 kV underground cable instead of overhead line. IPP's proposal to evacuate power by laying 33 kV underground cable is technically in order and accordingly TEC of the Pharari HEP may be amended by replacing the word "33 kV line" by "33 kV line/underground cable" please.

Yours faithfully,


Dy. General Manager (Planning)

✓ Copy to M/S Alvasa Power (India) Ltd, Vashisht Bhawan, Village Rabon, P.O. Saproon,
Distt. Solan-173211 w.r.t his letter under reference.


Dy. General Manager (Planning)



© 2020 Maxar Technologies
© 2020 Google
Image © 2020 CNES / Airbus

Imagery Date: 12/29/2018 32°06'19.61" N 77°06'18.42" E elev: 6638 ft eye alt: 50002 ft

Panjari Power Pvt. Ltd.
N. P. Singh
Director

th.
Divisional Forest Officer
Kullu Forest Division, Kul

[Signature]
General Manager (C & D)
General Manager (C & D)
HPPTCL, Tuitikandi Shimla-5
HPPTCL, Himfed Bhawan,
Panjari, shimla-171005