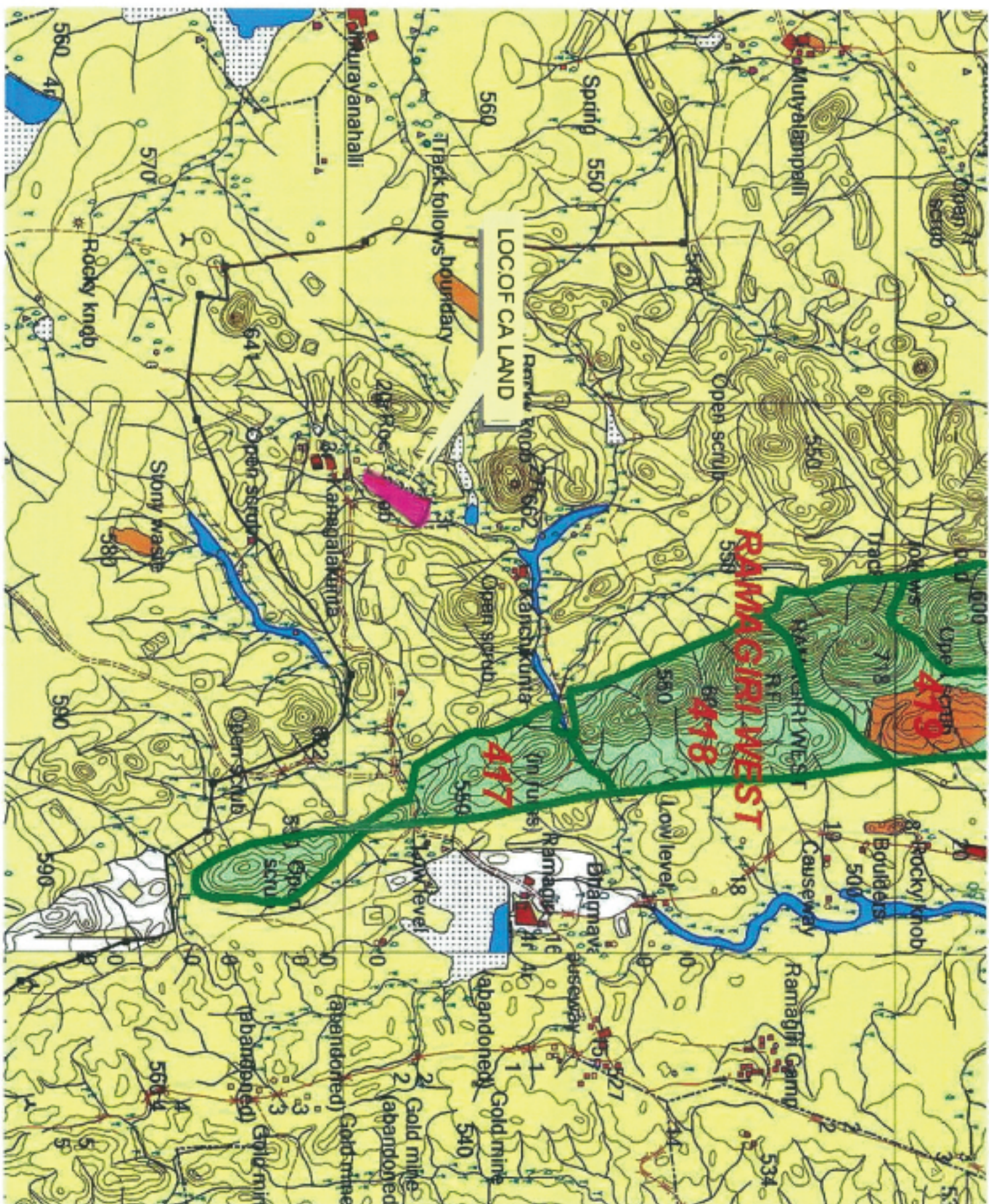


LOCATION MAP OF 8.36 HA NON-FOREST LAND IDENTIFIED IN SY NO:109-B, 109-C OF RAMGIRI(V), IN RAMGIRI(M), ADJACENT COMP NO: 417 OF RAMGIRI WEST  
RF IN ANANTHAPURAM DISTRICT

IDENTIFIED TOWARDS CALAND BY M/S SREE SURYAM GRANITES PVT LTD, CHITTOOR IN LIEU OF DIVERSION OF 7.57 HA FOREST LAND IN COMP NO. 387, ALLAMADUGU RF, CHITTOOR WEST DIVISION FOR QUERRYING OF BLACK GRANITE.



Scale 1: 50000

Map Datum: WGS84

## REFERENCE

**RF Boundary Line**

CA Land

Counter Side of

0 3000 DEPUTY FOR RANG OFFICER 6000 Meters

**Forest Range Officer  
ANANTAPUR.**

Divisional Forest Office  
Aranthapuram.  
8/8/17