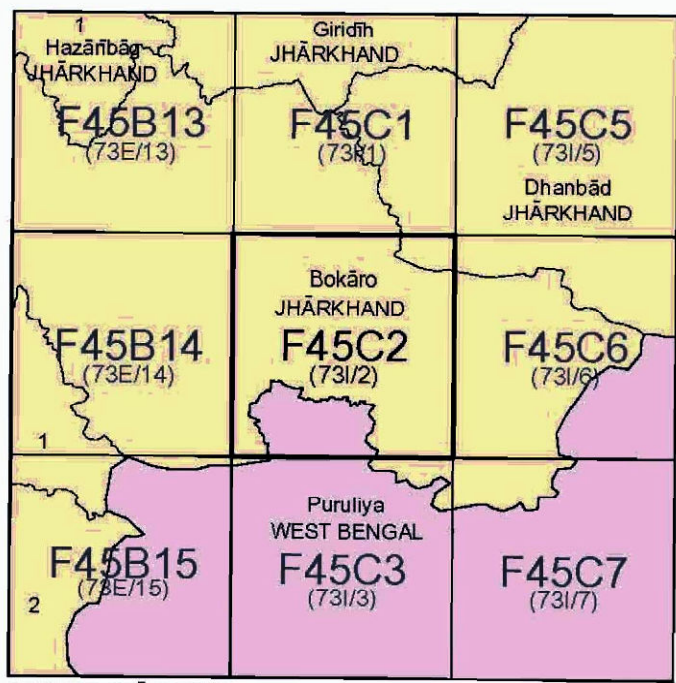




No. F45C2

Scale 1:50,000

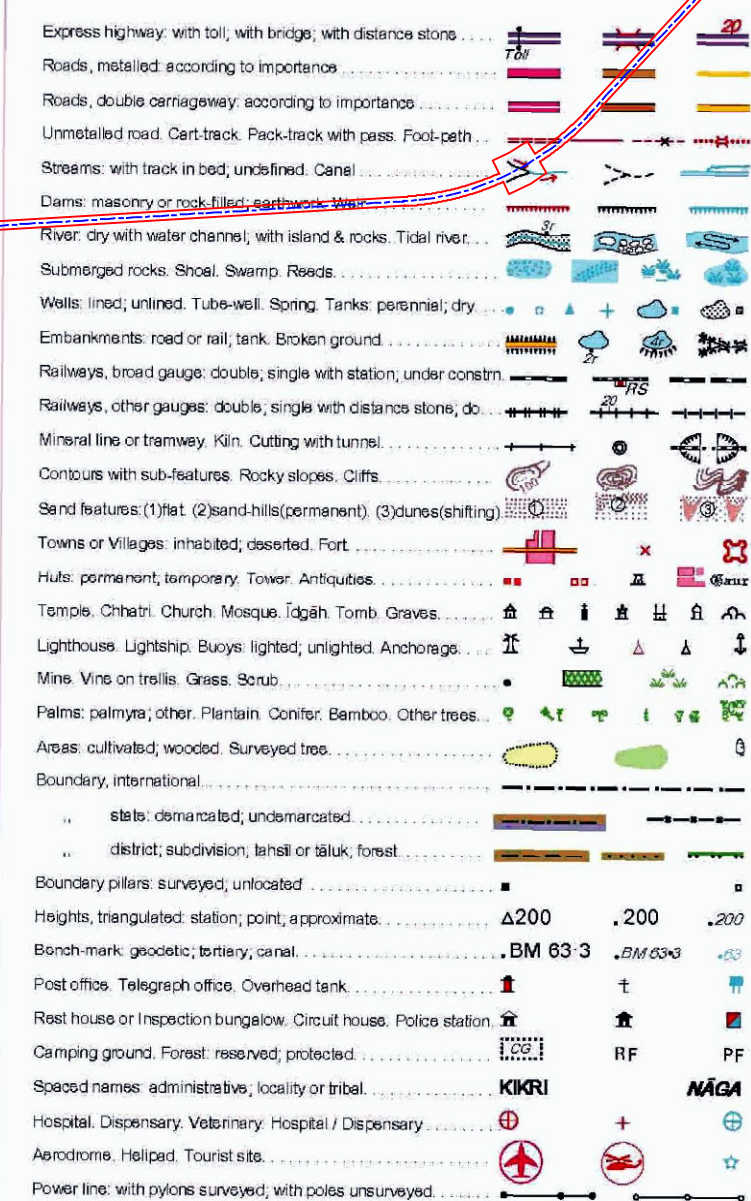


भारतीय सर्वेक्षण विभाग SURVEY OF INDIA

1st Edition 2011.

Price : Rs. 70/-

CONVENTIONAL SYMBOLS



REFERENCE

AP 32 National Highway No. 32

NOTES

Heights are in metres and above Indian mean sea level. Contours are approximate. A relative height, e.g., 50, represents the approximate height, in metres, between the top and bottom of a steep slope. Tube wells are numerous throughout the sheet, only the important ones have been shown. The administrative boundaries in this sheet have been surveyed as pointed out by the local officials on the ground but have not been verified by the authorities concerned.

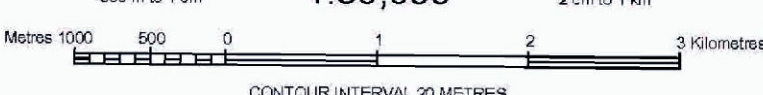
COMPILATION INDEX

A. Compiled from 1:25,000 survey, 1901-02. Updated for major details during 2000-07.

Projection - UTM Datum - WGS 84

Magnetic Variation from True North about 3° West in 2005. (Decreasing by about 1° annually)

1:50,000



For further details about this map, please contact

Director

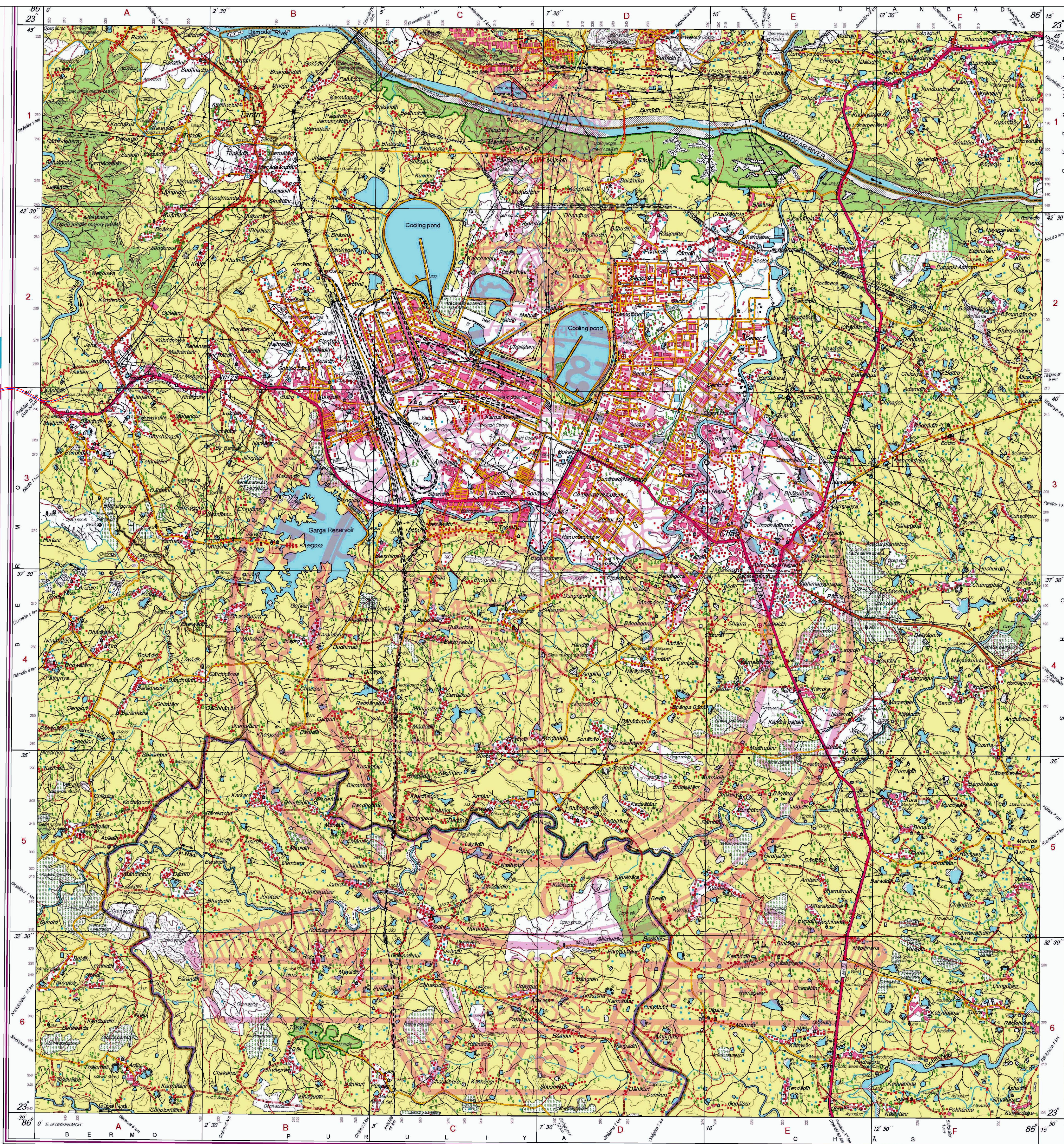
WB & Sikkim Geo-Spatial Data Centre

Survey of India, 13, Wood Street

Kolkata.

WEBSITE - www.surveyofindia.gov.in

Reproduction in whole or part by any means is prohibited without the written permission of Survey of India, the National Mapping Agency.



Division: Bokaro

Name of Project : Diversion of fresh Forest Land for development of Economic Corridors, Inter Corridors, Feeder Routes etc., under Bharatmala Pariyojana of Jaina More -Gola -Ormanji section in the state of Jharkhand.

Sudhir Kumar
Project Director
NHAI, PIU
Dhanbad

REG. NO. 5137 - WP3 0115 (WB & Sikkim) QDC-1 (6/3/00)-514.

भारत के नक्शाकार, सर्वेक्षण विभाग, भारत, के निदेश में प्रकाशित,
Published under the direction of Swarna Subha Rao, B.E. Surveyor General of India.

PRINTED AT THE WESTERN PRINTING GROUP OF SURVEY OF INDIA.