

निर्यात के लिए नहीं NOT FOR EXPORT

OPEN SERIES MAP

No. G46K3

Scale 1:50,000


G46J14 (83F/14)	Jorhāt ASSAM G46K2 (83J/2)	G46K6 (83J/6)
Golāghāt ASSAM G46J15 (83F/15)	G46K3 (83J/3)	Mokokchōng NAGALAND G46K7 (83J/7)
1 G46J16 (83F/16)	Wokha NAGALAND G46K4 (83J/4)	Zunheboto NAGALAND G46K8 (83J/8)

CONVENTIONAL SYMBOLS

Express highway with toll; with bridge; with distance stone		20
Roads, metalled according to importance		750
Roads, double carriageway according to importance		
Unmetalled road. Cart-track. Pack-track with pass. Foot-path		
Streams with track in bed; unlined. Canal		
Dams; masonry or rock-filled; earthenwork. Weir		
River, dry with water channel, with island or rocks. Tidal river		
Submerged rocks. Shoal. Swamp. Reeds		
Wells: lined, unlined. Tub-well. Spring. Tanks; perennial; dry		
Embankments: road or rail. Broken ground		
Railways, broad gauge; double; single with station; under construction		750
Railways, other gauges: double; single with distance stone. do.		
Mineral line or tramway. Kils. Cutting with tunnel		
Contours with sub-features: Rocky slopes, Cliffs		
Sea features: (1) Reef, (2) sand-bank (shoal), (3) dunes/shifting		3
Towns or Villages: inhabited, deserted, Fort		
Huts: permanent, temporary. Tower. Antiquities		
Temple, Chhatra, Church, Mosque, Jāgah, Tomb, Graves		
Lighthouse, Lightship. Buoys lighted; unlighted; Anchorage		
Mine. Vine on trails. Grass. Scrub		
Palms: palmyra, other. Plantain. Conifer. Bamboo. Other trees		
Areas: cultivated, wooded, Surveyed tree		
Boundary, international		
state, demarcated, undemarcated		
district, subdivision, taluk or taluk, forest		
Boundary pillars: surveyed, unlocated		
Height, triangulated station; point, approximate		200
Bench-mark: geodetic; tertiary, canal		BM 633
Post office. Telegraph office. Overhead tank		
Rest house or inspection bungalow, Circuit house. Police station		
Camping ground. Forest: reserved; protected		RF PF
Spaced names of towns, villages, locality or tribal		KIKRI
Hospital. Dispensary, Veterinary. Hospital / Dispensary		
Aerodrome. Helipad. Tourist site		
Power line: with pylons surveyed, with poles unsurveyed		
Proposed compensatory afforestation area		

COMPILATION INDEX

A Surveyed during 1971-72. Updated for major details during 1990-91 and 2005-06.



Projection - UTM Datum - WGS 84

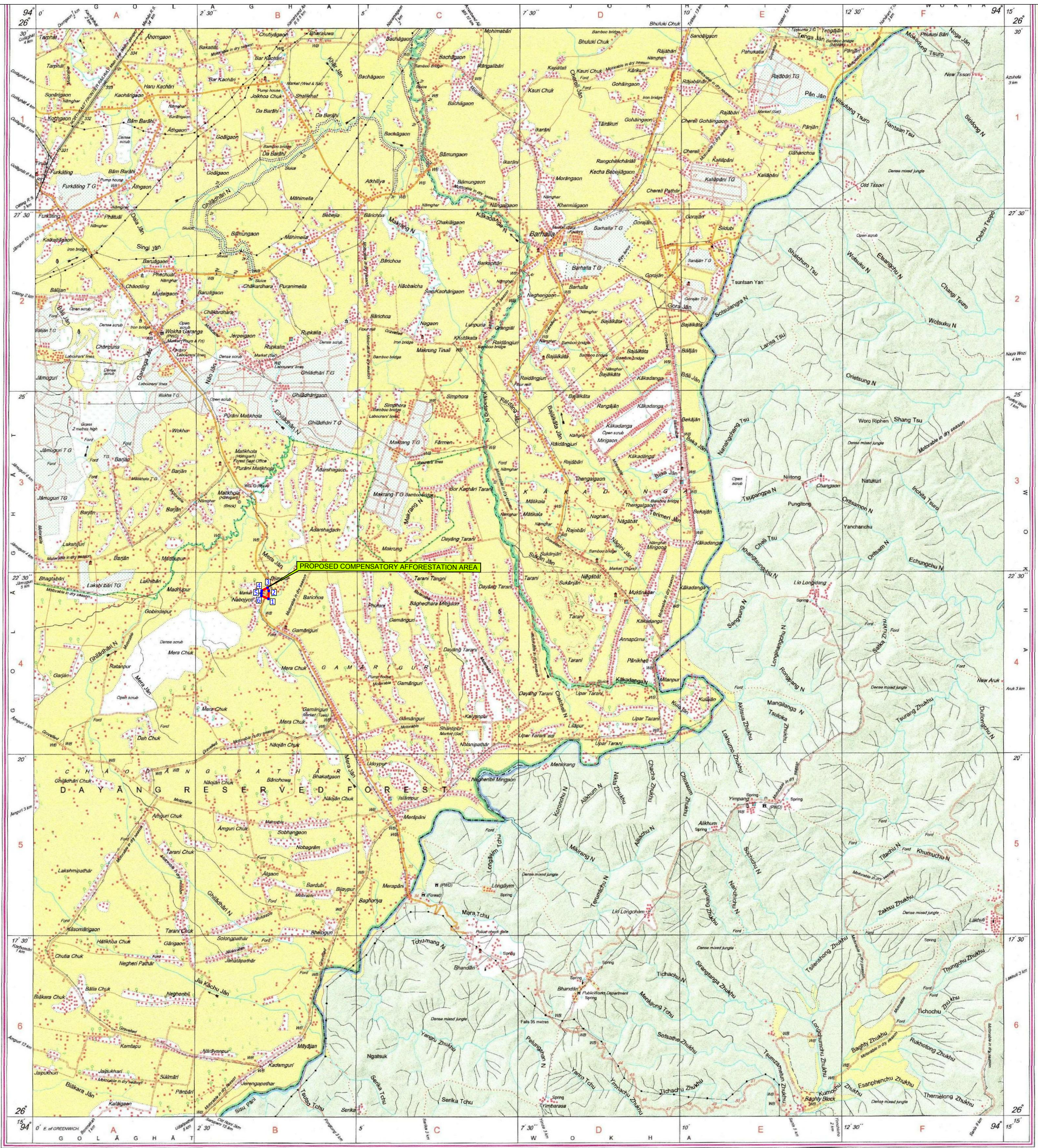
Magnetic Variation from True North about 1° West in 2005.
(Increasing by about 1° annually).

1:50,000

500 m to 1 cm 2 cm to 1 km

Meters: 1000 500 0 1 2 3 Kilometres

GPS COORDINATES OF PROPOSED COMPENSATORY AFFORESTATION AREA			
Sl. No.	GPS Points	Latitude	Longitude
1	A	26°22'15.25"	94°03'36.88"
2	B	26°22'21.85"	94°03'37.26"
3	C	26°22'24.64"	94°03'36.12"
4	D	26°22'22.09"	94°03'30.59"
5	E	26°22'19.95"	94°03'30.28"
6	F	26°22'17.90"	94°03'30.34"



भारत के महासर्वेक्षक, स्वर्ण सुब्बा राव, बी०ई० के निदेशन में प्रकाशित,
Published under the direction of Swarna Subba Rao, B.E., Surveyor General of India,
Survey of India, Hāthibarkala Estate, Post Box No.37, Dehra Dūn-248001 (Uttarākhānd)
Department of Science & Technology, Government of India

PRINTED AT THE WESTERN PRINTING GROUP OF SURVEY OF INDIA