



NOT FOR EXPORT
OPEN SERIES
MAP

No. F45B6

Scale 1:50,000

F45B1 (73E/1)	F45B5 (73E/5)	F45B9 (73E/9)
F45B2 (73E/2)	F45B6 (73E/6)	F45B10 (73E/10)
F45B3 (73E/3)	F45B7 (73E/7)	F45B11 (73E/11)

1 Chattr, JHARKHAND.

भारतीय सर्वेक्षण विभाग
SURVEY OF INDIA

1st Edition 2011.

Price: Rs.113/-

CONVENTIONAL SYMBOLS

- Express Highway: with soft; with bridge; with distance stone
Roads, metalled: according to importance
Roads, double carriageway: according to importance
Unmetalled road. Cart-track. Pack-track with pass. Foot-path.
Streams with track in bed; unfilled. Canal
Dams: masonry or rock-filled; earthwork. Weir.
River: dry with water channel; with island & rocks. Tidal river
Submerged rocks. Shoal. Swamp. Reeds
Wells: lined; unfilled. Spring. Tanks; perennial; dry
Embankments: road or rail; bank. Broken ground
Railways, broad gauge: double; single with station; under construction
Railways, other gauge: double; single with station; under construction
Mineral line or tramway. Kili. Cutting with tunnel; under construction
Contours with sub-features. Rocky slopes. Cliffs
Sand features: (Tidal) (Zoned) (Shifting) (Shifting)
Towns or Villages: inhabited; deserted. Fort
Huts: permanent; temporary. Tower. Antiquities
Temple. Chhatra. Church. Mosque. Ghat. Tomb. Graves
Lighthouse. Lightship. Buoy: lighted; unlighted. Anchorage
Mine. Vine on traffic. Grass. Scrub
Palms: palmyra; other. Plantain. Conifer. Bamboo. Other trees
Areas: cultivated; wooded. Surveyed tree
Boundary: international
State: demarcated; undemarcated
District: subdivision; taluk or thika; forest
Boundary pillars: surveyed; unlocated; village trijunction
Heights: triangulated; station; point; approximate.
Bench-mark: geodetic; tertiary; canal
Post office. Telegraph office. Overhead tank
Rest house or inspection bungalow. Circuit house. Police station
Camping ground. Forest: reserved; protected
Seated names: administrative; locality or tribal
Hospital. Dispensary. Veterinary Hospital/Dispensary
Aerodrome. Helipad. Tourist site
Power line: with pylons surveyed; with poles unsurveyed

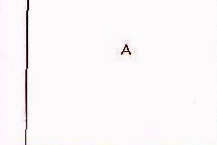
REFERENCES
City: Chymsey. PWD: Public Works Department.
NH 33: National Highway No. 33.

NOTES

Heights are in metres and above Indian mean sea level.
Contours are approximate.
A relative height, R, represents the approximate height, in metres, between the top and bottom of a steep slope.
The exterior boundaries of areas of Reserved or Protected Forest are shown by green ribbons.
The kilometre zone numbers along roads and railways are shown in slant type, e.g. S.
Whereas kilometre numbers are shown in upright type, e.g. 5.
The district boundary between Hazratnagar and Ranchi Districts has been surveyed as pointed out by the local officials on the ground, but has not been verified by the District authorities of Ranchi District.
Common boundaries between forests have not been shown for want of information.

COMPILATION INDEX

A. Surveyed during 1978-79. Updated for major details from satellite imagery of 2007 during 2008-09.



Projection - UTM Datum - WGS 84

Magnetic Variation from True North about 2° West in 2005.
(Decreasing by about 1° annually).

1:50,000

500 m to 1 km
2 cm to 1 km
3 Kilometres
CONTOUR INTERVAL 20 METRES

For further details about this map, please contact

Director

Jharkhand Geo-Spatial Data Centre

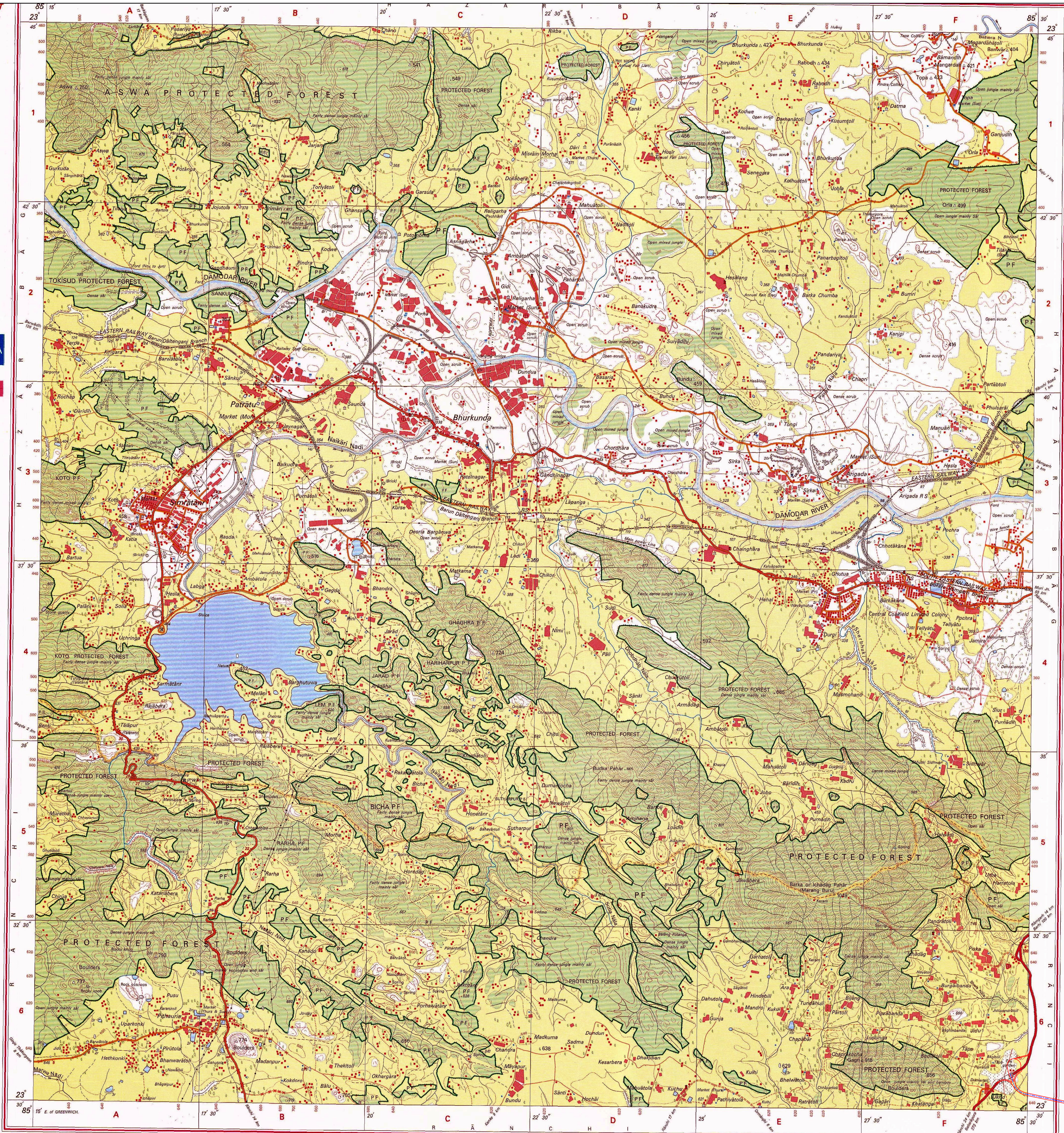
Survey of India, Dhanbad

Ranchi - 834002.

Fax: 0651-2482789

WEBSITE - www.surveyofindia.gov.in

Reproduction in whole or part by any means is prohibited
without the written permission of Survey of India, the
National Mapping Agency.



Division: Ranchi

Name of Project : Diversion of fresh Forest Land for development of Economic Corridors, Inter Corridors, Feeder Routes
etc., under Bharatmala Pariyojana of Jaina More -Gola -Ormanji section in the state of Jharkhand.

Sudhir Kumar
Project Director
NHAI, PIU
Dhanbad

REG. No. 0163-SPG D-11 (Jharkhand CDC-1:50,000)-1015

भारत के मानचित्र, जे. सर्वेक्षण विभाग के प्रकाशित
Published under the direction of Dr. Swarna Subba Rao, Surveyor General of India

PRINTED AT THE SOUTHERN PRINTING GROUP OF SURVEY OF INDIA.