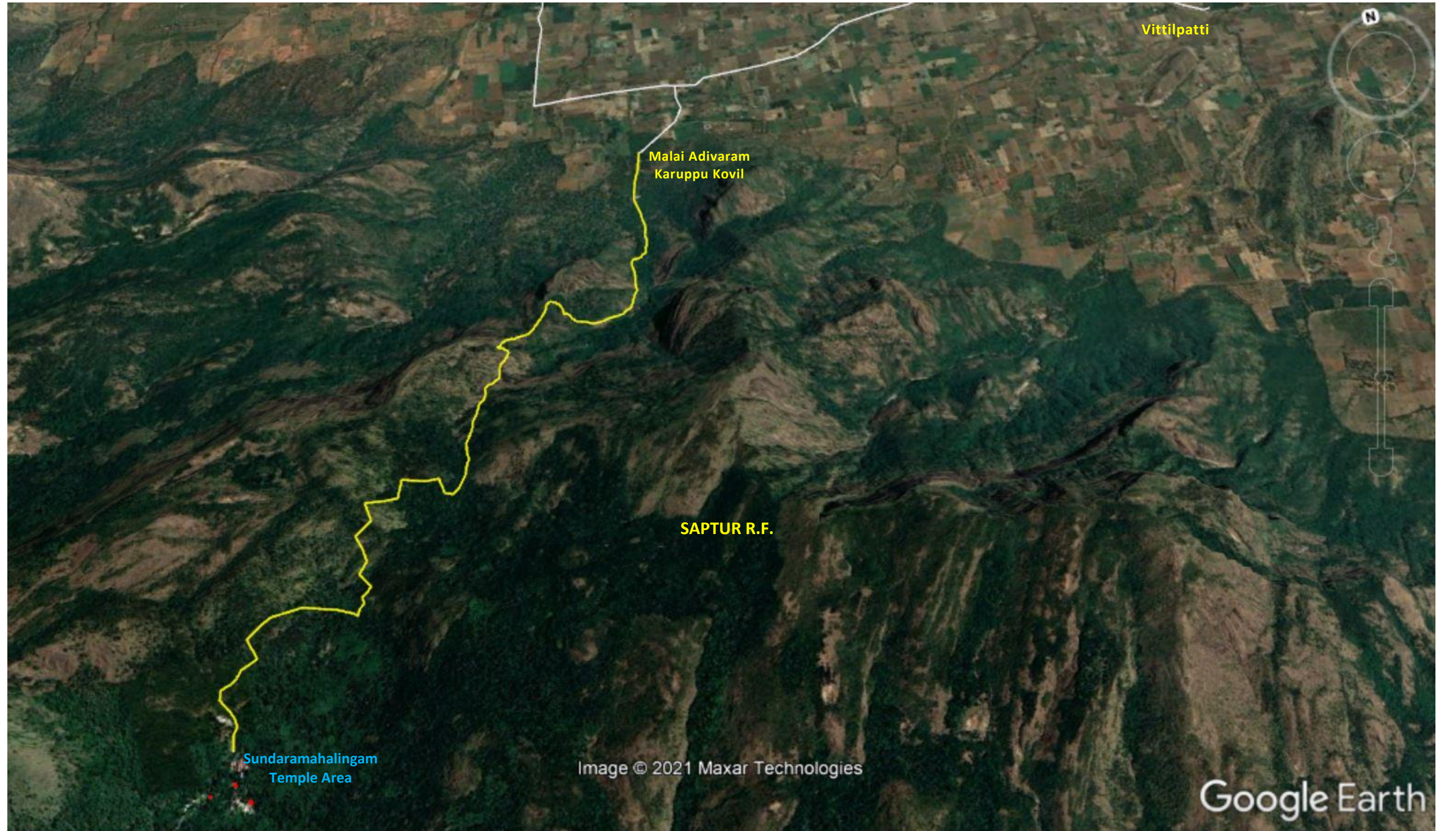


Proposed erection of New 11KV HT XLPE underground Electric Line towards Electrification of Arulmigu Sundaramahalingam Swamy Thirukkivil from Vazhaithoppu pathway to Arulmigu Sundaramahalingam Temple area across Saptur R.F. in Srivilliputhur Wildlife Sanctuary




EXECUTIVE ENGINEER
TANGEDCO / M.E.D.C.
TIRUMANGALAM

— Proposed EB Line route