

Legend

• bndpoints1	Cart Track
revenue_forest_3	Metalled Road
revenue_forest_2	UnMetalled Road
revenue_forest_1	
protected_forest	
minebnd	
15 KM BUFFER	
Railway Line	
TOWN / VILLAGE	
PROTECTED AREA	
FOREST DIVISION REGION	
FOREST RANGE REGION	
COMPARTMENT REGION	
ROAD_TYPE	

Class_Name	MOD.DENSE-FOREST	NON-FOREST	OPEN-FOREST	SCRUB	VERY DENSE-FOREST	WATER

NOT FOR EXPORT
निर्वाण के लिये नहीं

MAP PREPARED BY
P. S. SINGH
P. S. SINGH
P. S. SINGH

MAP PREPARED FOR:-
P. S. SINGH
P. S. SINGH
P. S. SINGH

REB.No. :- FP/CS/MN/16237/2015

Map Subject :- Diversion of forest land for Non-forest purpose under Forest Conservation Act 1980 for Diversion of 165.077 Ha of Forest land for Chhal DC Siam II B MTY Project of SECL in Raigarh District of Chhattisgarh - Raigarh, Reg.No. FP/CS/MN/16237/2015.

Chhattisgarh Forest Department
Forest Cover Map
Sheet. No. 64 N 04/07

मानचित्र स्केल 1:15000
टोपो शीट नं. - 64 N 04/07

International Day of Forests
21 March

Scale 1:15000

North Arrow

Scale 1:15000

Chhattisgarh Forest Department
Forest Cover Map
Sheet. No. 64 N 04/07

मानचित्र स्केल 1:15000
टोपो शीट नं. - 64 N 04/07

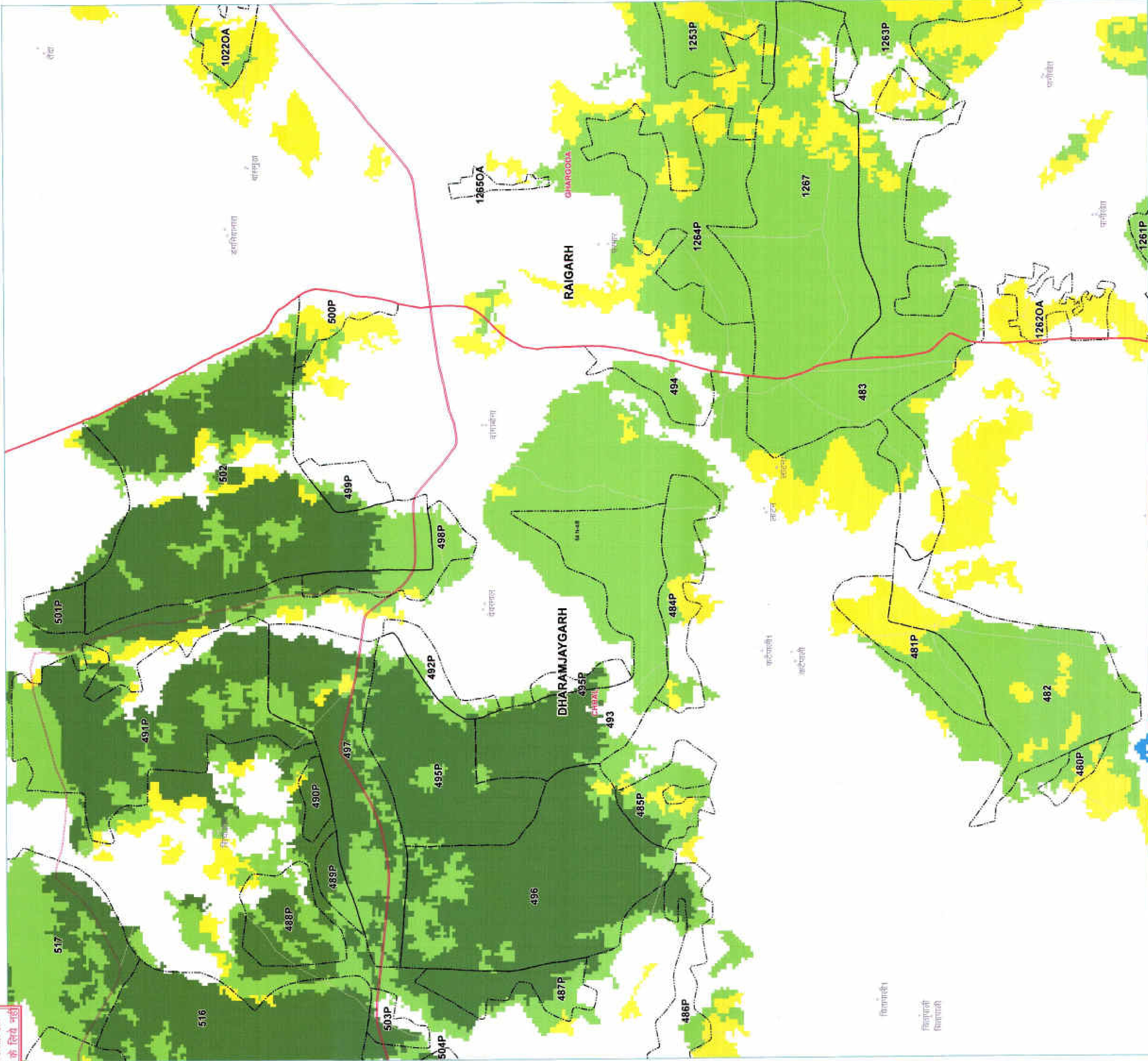
83°16'0"E

NOT FOR EXPORT
नियमित के बिना नहीं

N.0.01.22

83°16'0"E

N.0.01.22



N.0.02.22

Legend

- endpoints1
- revenue_forest_3
- revenue_forest_2
- revenue_forest_1
- protected_forest
- minebnd
- 15 KM BUFFER
- Railway Line
- TOWN / VILLAGE
- PROTECTED AREA
- FOREST DIVISION REGION
- FOREST RANGE REGION
- COMPARTMENT REGION
- ROAD_TYPE

- Cart Track
- Metalled Road
- UnMetalled Road
- Class_Name
- MOD DENSE FOREST
- NON FOREST
- OPEN FOREST
- SCRUB
- VERY DENSE FOREST
- WATER

मानचित्र तैयार करने वाले अधिकारी का हस्ताक्षर

मानचित्र तैयार करने वाले अधिकारी का हस्ताक्षर

मानचित्र तैयार करने वाले अधिकारी का हस्ताक्षर

MAP PREPARED BY
Name of the person who prepared the map
Signature

मानचित्र तैयार करने वाले अधिकारी का हस्ताक्षर

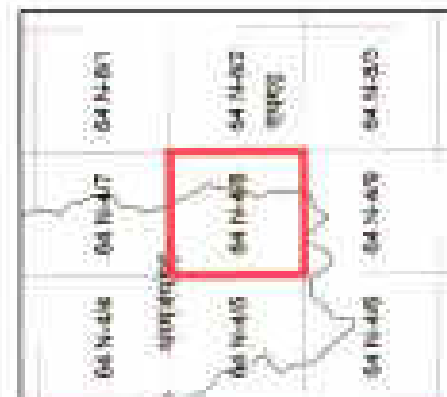
मानचित्र तैयार करने वाले अधिकारी का हस्ताक्षर

MAP PREPARED FOR:-

मानचित्र तैयार करने वाले अधिकारी का हस्ताक्षर

REC.No.:- FP/CS/MN/16237/2015.

Map Subject :- Diversion of forest land for Non-forest purpose under Forest Conservation Act 1980 for Diversion of 185.077 Hectar forest land for Chhat DC Scheme III & IV Project of SECL in Raigarh District of Chhattisgarh - Regarding. Reg.No. FP/CS/MN/16237/2015.



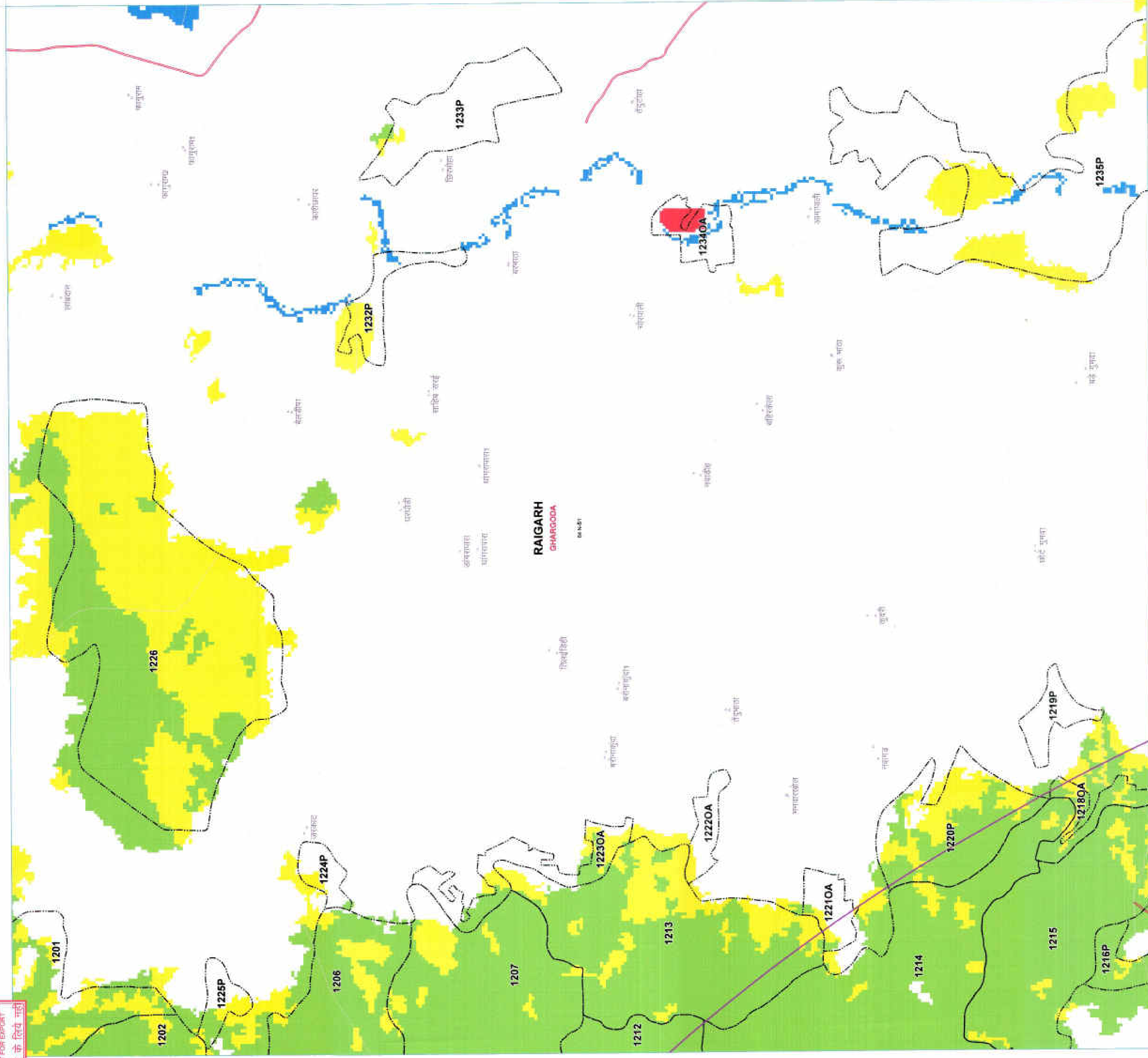
SCALE 1:15000



International Day of Forests
21 March

Map Series :- 1. Chhattisgarh Forest Department Map
2. Forest Cover Map
3. Forest Cover Map
4. Forest Cover Map
5. Forest Cover Map
6. Forest Cover Map
7. Forest Cover Map
8. Forest Cover Map
9. Forest Cover Map
10. Forest Cover Map
11. Forest Cover Map
12. Forest Cover Map
13. Forest Cover Map
14. Forest Cover Map
15. Forest Cover Map
16. Forest Cover Map
17. Forest Cover Map
18. Forest Cover Map
19. Forest Cover Map
20. Forest Cover Map
21. Forest Cover Map
22. Forest Cover Map
23. Forest Cover Map
24. Forest Cover Map
25. Forest Cover Map
26. Forest Cover Map
27. Forest Cover Map
28. Forest Cover Map
29. Forest Cover Map
30. Forest Cover Map
31. Forest Cover Map
32. Forest Cover Map
33. Forest Cover Map
34. Forest Cover Map
35. Forest Cover Map
36. Forest Cover Map
37. Forest Cover Map
38. Forest Cover Map
39. Forest Cover Map
40. Forest Cover Map
41. Forest Cover Map
42. Forest Cover Map
43. Forest Cover Map
44. Forest Cover Map
45. Forest Cover Map
46. Forest Cover Map
47. Forest Cover Map
48. Forest Cover Map
49. Forest Cover Map
50. Forest Cover Map
51. Forest Cover Map
52. Forest Cover Map
53. Forest Cover Map
54. Forest Cover Map
55. Forest Cover Map
56. Forest Cover Map
57. Forest Cover Map
58. Forest Cover Map
59. Forest Cover Map
60. Forest Cover Map
61. Forest Cover Map
62. Forest Cover Map
63. Forest Cover Map
64. Forest Cover Map
65. Forest Cover Map
66. Forest Cover Map
67. Forest Cover Map
68. Forest Cover Map
69. Forest Cover Map
70. Forest Cover Map
71. Forest Cover Map
72. Forest Cover Map
73. Forest Cover Map
74. Forest Cover Map
75. Forest Cover Map
76. Forest Cover Map
77. Forest Cover Map
78. Forest Cover Map
79. Forest Cover Map
80. Forest Cover Map
81. Forest Cover Map
82. Forest Cover Map
83. Forest Cover Map
84. Forest Cover Map
85. Forest Cover Map
86. Forest Cover Map
87. Forest Cover Map
88. Forest Cover Map
89. Forest Cover Map
90. Forest Cover Map
91. Forest Cover Map
92. Forest Cover Map
93. Forest Cover Map
94. Forest Cover Map
95. Forest Cover Map
96. Forest Cover Map
97. Forest Cover Map
98. Forest Cover Map
99. Forest Cover Map
100. Forest Cover Map

ROAD_TYPE









Legend

- | | | | | | | | | | | | | | |
|---|-----------|------------------|------------------|------------------|------------------|---------|--------------|--------------|-----------------|----------------|-----------------|--------------|-------------|
| • | bdpoints1 | revenue_forest_3 | revenue_forest_2 | revenue_forest_1 | protected_forest | minebnd | 15 KM BUFFER | Railway Line | TOWN / VILLAGES | PROTECTED AREA | FOREST DIVISION | FOREST RANGE | COMPARTMENT |
| | | | | | | | | | | | | | |

ROAD TYPE

Cart Track
Metalled Road
UnMetalled Road

Class_Name	
MOD.DENSE-FOREST	
NON-FOREST	
OPEN-FOREST	
SCRUB	
VERY DENSE-FOREST	
WATER	

REGION
NOIR
NOIR

MAP PREPARED FOR:-

to maintain
good relations with
the public.

REG.No. :- FP/CG/MIN/16237/2015.

Map Subject :- Diversion of forest land for Non-forest purpose under Forest Conservation Act 1980 for Diversion of 185.017 Hect Forest land for Chhal DC Siam III S MTV Project of SECL in Raigarh District of Chhattisgarh - Regarding, Reg.No. FP/CE/MIN/16237/2015.

FP/CS/MIN/16237/2005

Prepared and Printed by: GIS Cell
Forest Management Information System Division, Rajpur

Prepared and Printed by: GIS Cell
Forest Management Information System Division, Rajpur

Chhattisgarh Forest Department

वन आवरण मानचित्र

Forest Cover Map

Sheet. No. 64 N 04/06

मानचित्र स्केल 1:15000

टोपोगी शीट नं. - 64 N 04/06

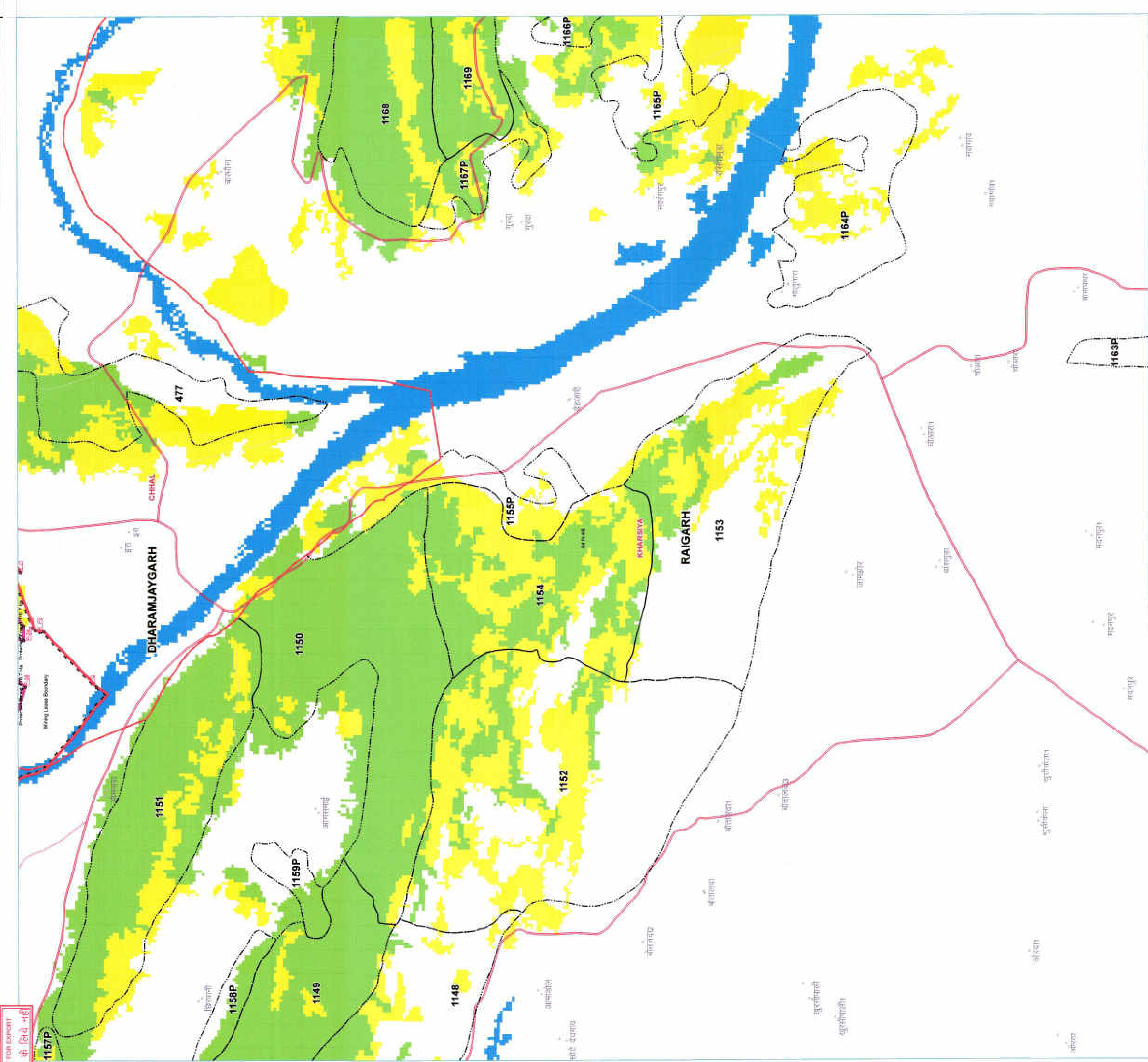
83°30'E

N.05.22

83°00'E

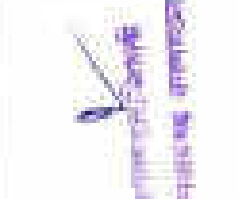
N.05.22

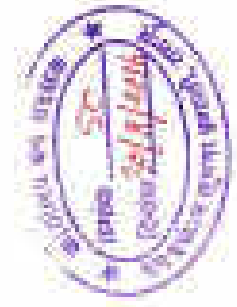
N.05.22



Legend

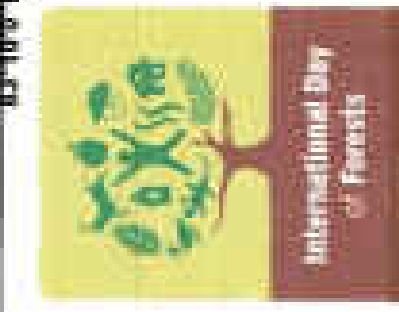
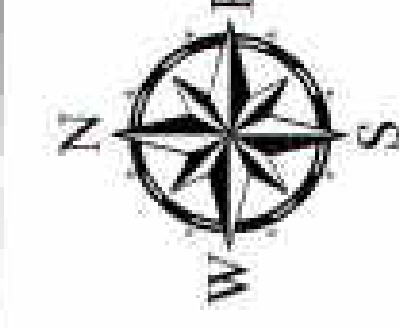
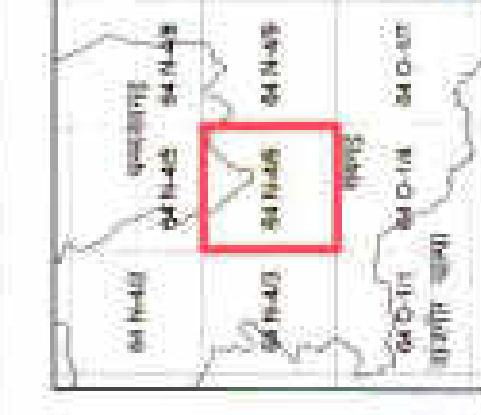
•	bdpoints1	Cart Track
•	revenue_forest_3	Mettalled Road
•	revenue_forest_2	UnMettalled Road
•	revenue_forest_1	
•	protected_forest	
•	minebnd	
•	15 KM BUFFER	
•	Railway Line	
•	TOWN / VILLAGE	
•	PROTECTED AREA	
•	FOREST DIVISION REGION	
•	FOREST RANGE REGION	
•	COMPARTMENT REGION	
•	ROAD_TYPE	

Prepared by:  Forest Officer, Raigarh



Prepared by:  Forest Officer, Raigarh

Prepared by: Forest Officer, Raigarh




Scale: 1:15000

Map No. 64 N 04/06

Prepared by:  Forest Officer, Raigarh


Prepared by:  Forest Officer, Raigarh

Prepared by:  Forest Officer, Raigarh

Prepared by:  Forest Officer, Raigarh

Prepared by:  Forest Officer, Raigarh

Prepared by:  Forest Officer, Raigarh

Prepared by:  Forest Officer, Raigarh

Prepared by:  Forest Officer, Raigarh


Prepared by:  Forest Officer, Raigarh

Prepared by:  Forest Officer, Raigarh

Prepared by:  Forest Officer, Raigarh

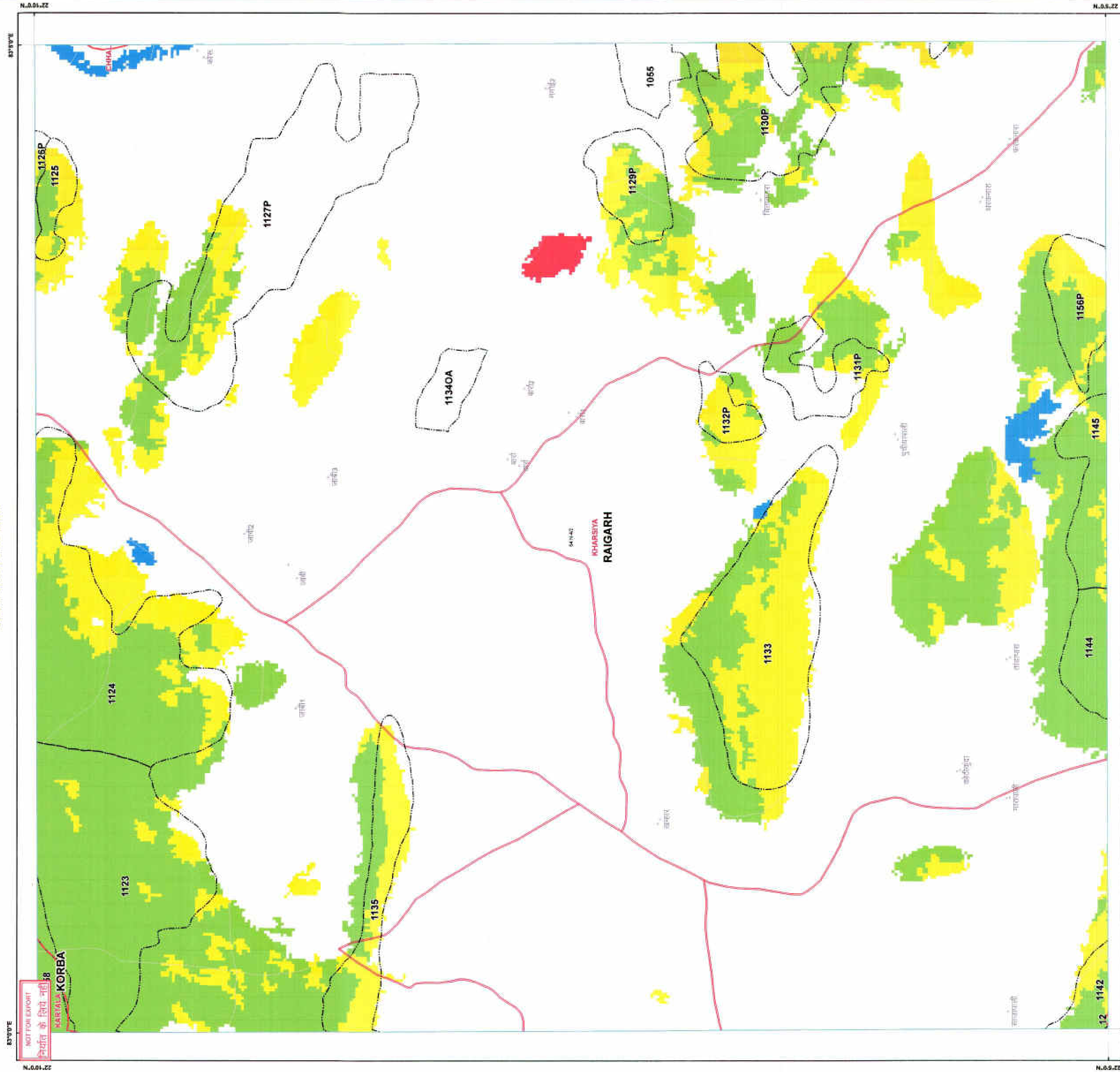
Prepared by:  Forest Officer, Raigarh

Prepared by:  Forest Officer, Raigarh

Prepared by:  Forest Officer, Raigarh

Prepared by:  Forest Officer, Raigarh

Prepared by:  Forest Officer, Raigarh



• bndpoints1

revenue_forest_3

revenue_forest_2

revenue_forest_1

protected_forest

minebrd

15 KM BUFFER

Railway Line

TOWN / VILLAGE

PROTECTED AREA

FOREST DIVISION REGION

FOREST RANGE REGION

COMPARTMENT REGION

Cart Track

Metalled Road

UnMetalled Road

Class_Name

MOD.DENSE-FOREST

NON-FOREST

OPEN-FOREST

SCRUB

VERY DENSE-FOREST

WATER

ROAD_TYPE

Signature

Official Stamp

Signature

Official Stamp

Signature

Official Stamp

MAP PREPARED FOR:-

as requested

for the purpose of the map

for the purpose of the map

REG.No. :- PP/CS/MIN/16237/2015.

Map Subject :- Division of Forest land for Non-forest purposes under Forest Conservation Act 1980 for Division of 185.07 Hect. Forest land for Chhedi DC Seam II E MTY Project of SECL in Raigarh District of Chhattisgarh - Regarding Reg.No. PP/CS/MIN/16237/2015.

International Day of Forests

20 March

Map of India

Location of Sheet

Scale 1:15000

Scale Bar

North Arrow

Compass Rose

Map of India

Location of Sheet

Scale 1:15000

Scale Bar

North Arrow

Compass Rose

Map of India

Location of Sheet

Scale 1:15000

Scale Bar

North Arrow

Compass Rose

All rights reserved. © 2016 Forest Management Information System Division Raipur, C.G.

Legend

• bndpoints1	Cart Track
revenue_forest_3	Mettalled Road
revenue_forest_2	UnMettalled Road
revenue_forest_1	
protected_forest	Class_Name
rhinebnd	MOD.DENSE-FOREST
15 KM BUFFER	NON-FOREST
Railway Line	OPEN-FOREST
TOWN / VILLAGE	SCRUB
PROTECTED AREA	VERY DENSE-FOREST
FOREST DIVISION REGION	WATER
FOREST RANGE REGION	
COMPARTMENT REGION	
ROAD_TYPE	

राज्य वन विभाग
राज्य वन विभाग
राज्य वन विभाग

MAP PREPARED BY
Prof. Dr. S. K. Singh
Name: P. S. Singh
Signature: P. S. Singh

MAP PREPARED BY
Prof. Dr. S. K. Singh
Name: P. S. Singh
Signature: P. S. Singh

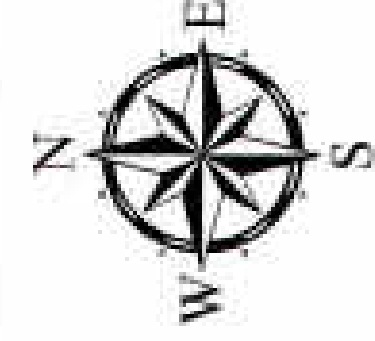
MAP PREPARED FOR:-

राज्य वन विभाग
राज्य वन विभाग
राज्य वन विभाग

REG. No. :- PP/CS/MIN/16237/2015.

Map Subject :- Diversion of forest land for Non-forest purpose under Forest Conservation Act 1980 for Division of 185.017 Ha of Forest land for Chhail DC Sam III 6 MTY Project of SCL in Raipur District of Chhattisgarh - Regarding. Reg.No. PP/CS/MIN/16237/2015.

84-1-86	84-1-89	84-1-92	84-1-95
84-1-98	84-1-101	84-1-104	84-1-107
84-1-110	84-1-113	84-1-116	84-1-119
84-1-122	84-1-125	84-1-128	84-1-131



Map No. :- PP/CS/MIN/16237/2015.

Map Subject :- Diversion of forest land for Non-forest purpose under Forest Conservation Act 1980 for Division of 185.017 Ha of Forest land for Chhail DC Sam III 6 MTY Project of SCL in Raipur District of Chhattisgarh - Regarding. Reg.No. PP/CS/MIN/16237/2015.

Chhattisgarh Forest Department

Forest Cover Map

Sheet. No. 64 O 01/04

मानचित्र स्केल 1 :15000

टोपो शीट नं. - 64 O 01/04

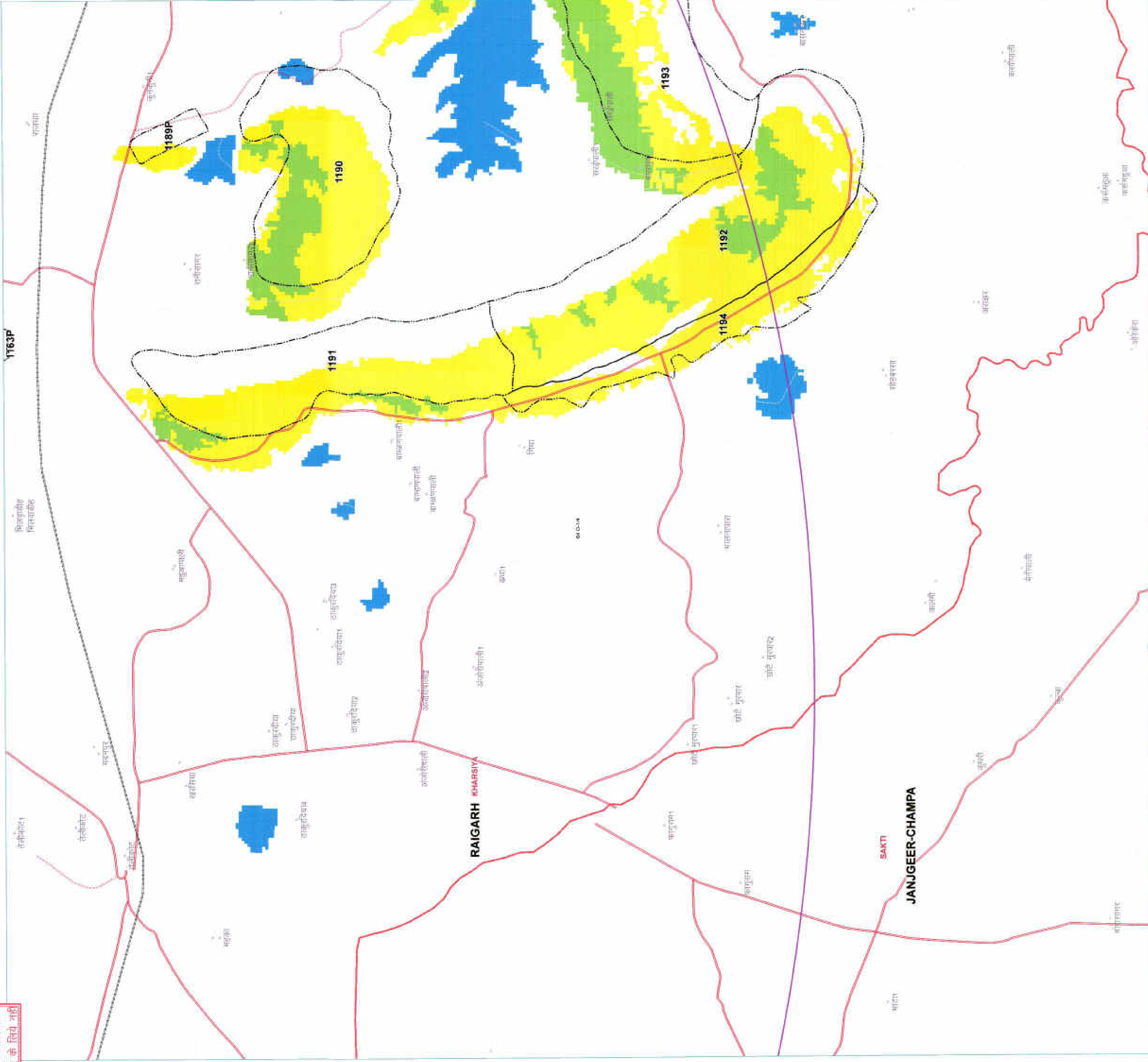
वन आवरण मानचित्र

83°50'E

NOT FOR EXPORT

रिपॉर्त के लिये नहीं

22°00'N



Legend

- bndpoints1
- revenue_forest_3
- revenue_forest_2
- revenue_forest_1
- protected_forest
- minebnd
- 15 KM BUFFER
- Railway Line
- TOWN / VILLAGE
- PROTECTED AREA
- FOREST DIVISION REGION
- FOREST RANGE REGION
- COMPARTMENT REGION
- ROAD_TYPE
- Cart Track
- Metalled Road
- UnMetalled Road
- Class_Name
- MOD DENSE FOREST
- NON FOREST
- OPEN FOREST
- SCRUB
- VERY DENSE FOREST
- WATER

राज्य वन विभाग
Chhattisgarh Forest Department

MAP PREPARED BY

Programmer/Map User

Name: SAKSHI JAIN

Signature: SAKSHI JAIN

MAP PREPARED FOR

Forest Department

Name: SAKSHI JAIN

Signature: SAKSHI JAIN

MAP PREPARED FOR

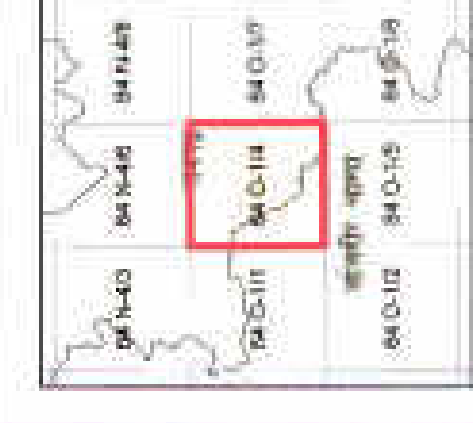
Forest Department

Name: SAKSHI JAIN

Signature: SAKSHI JAIN

REG No. :- FP/CS/MIN/16237/2015.

Map Subject :- Division of Forest land for Non-forest purpose under Forest Conservation Act 1980 for Division of 185.077 Hectare Forest land for Chid DCS Sann III B MTY Project of SEEL in Raigarh District of Chhattisgarh - Regarding. Reg. No. FP/CS/MIN/16237/2015.

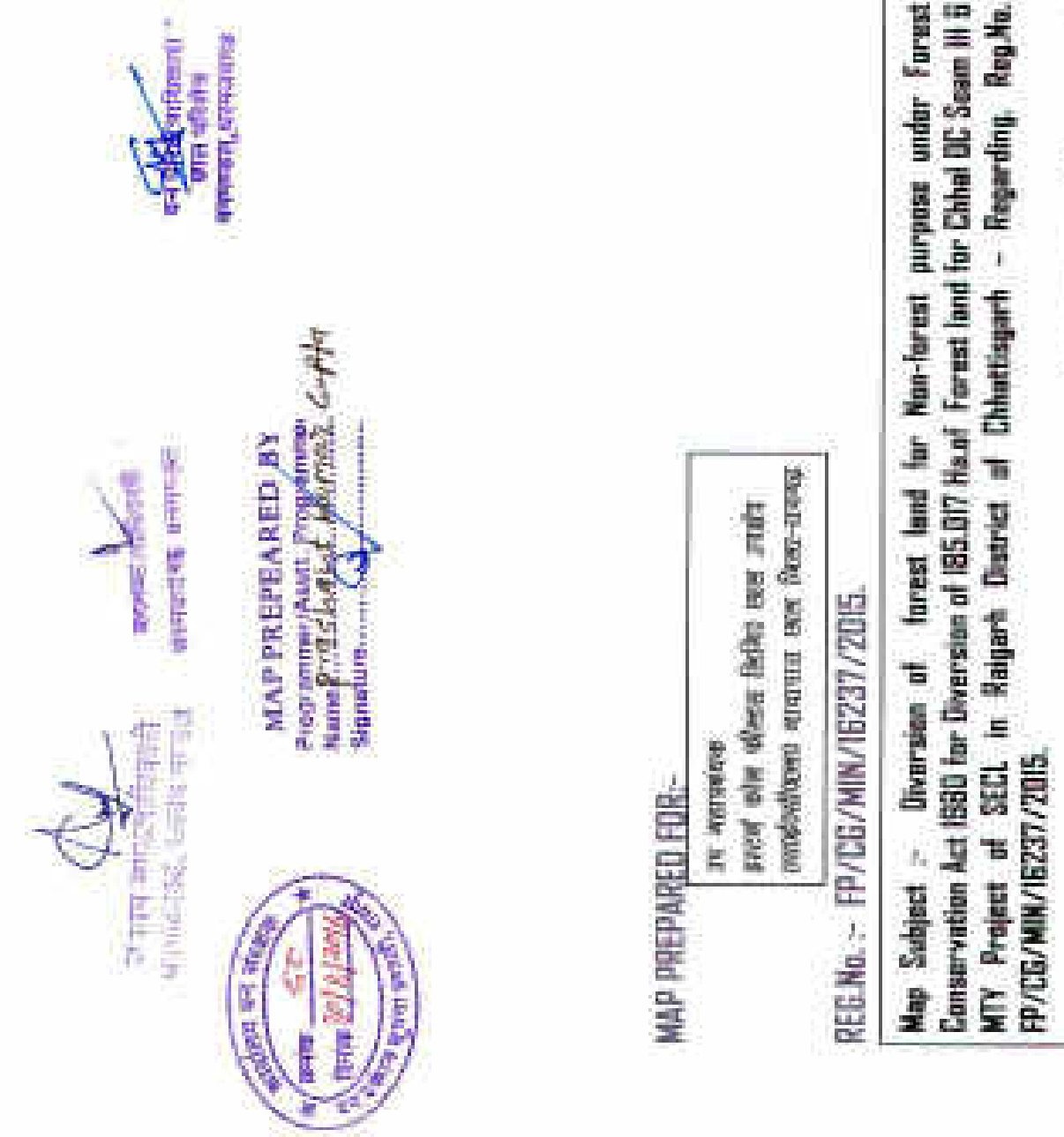
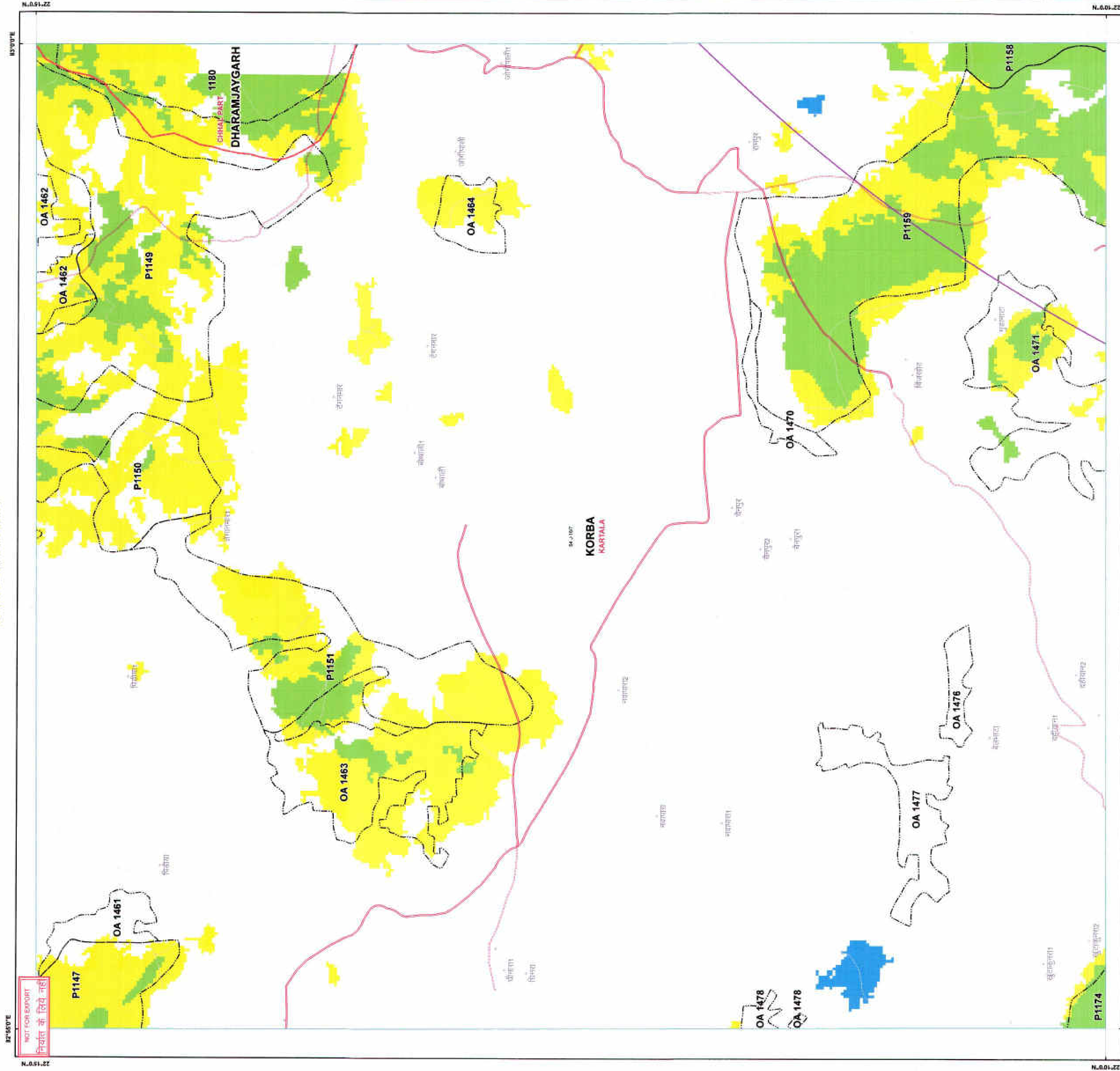


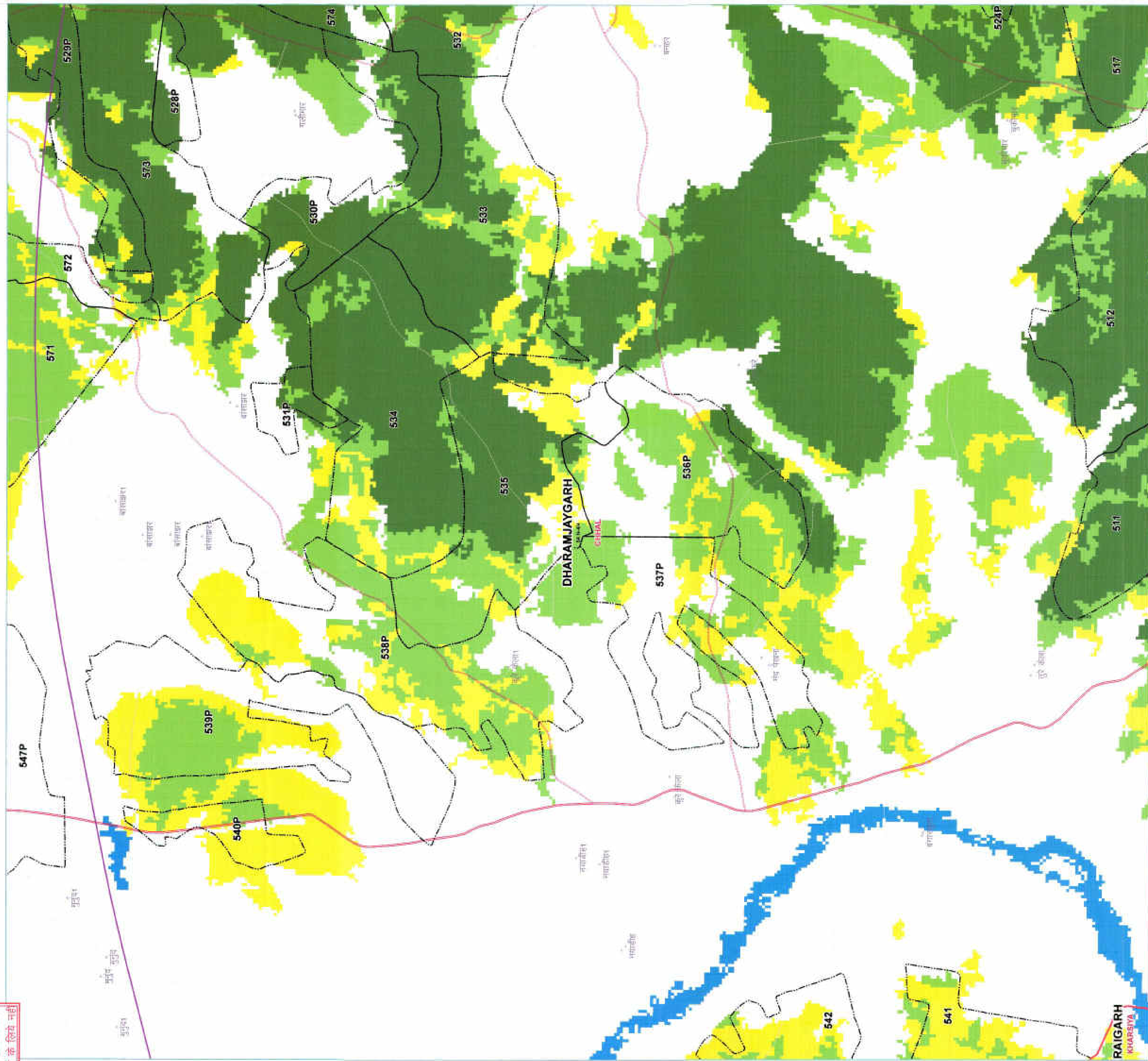
International Day of Forests
21 March

Scale: 1:15000

Map No. 64 O 01/04

Prepared and Printed by:- GIS Cell
Forest Management Information System Division, Raipur.

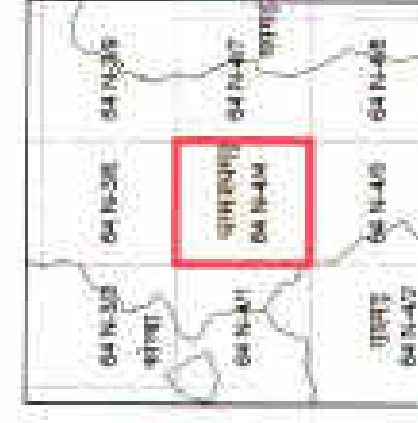
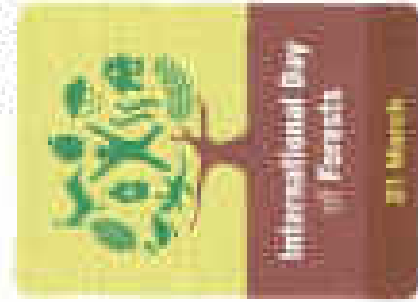




Legend

- bndpoints1
- revenue_forest_3
- revenue_forest_2
- revenue_forest_1
- protected_forest
- minebnd
- 15 KM BUFFER
- Railway Line
- TOWN / VILLAGE
- PROTECTED AREA
- FOREST DIVISION REGION
- FOREST RANGE REGION
- COMPARTMENT REGION
- ROAD_TYPE

- Cart Track
- Metalled Road
- UnMetalled Road
- Class_Name
- MOD-DENSE-FOREST
- NON-FOREST
- OPEN-FOREST
- SCRUB
- VERY DENSE-FOREST
- WATER

Digitized by
www.rajawade.comDigitized by
www.rajawade.comDigitized by
www.rajawade.comDigitized by
www.rajawade.comDigitized by
www.rajawade.comDigitized by
www.rajawade.comDigitized by
www.rajawade.comDigitized by
www.rajawade.comDigitized by
www.rajawade.comDigitized by
www.rajawade.com

Forest Department, Chhattisgarh, India

Scale: 1:15000

Scale: 1:15000

Scale: 1:15000

Scale: 1:15000

Scale: 1:15000

Scale: 1:15000

Scale: 1:15000

Map Subject :- Division of forest land for Non-forest purposes under Forest Conservation Act 1980 for Division of 185.177 Ha of Forest land for Chhattisgarh in 6 MTY Project of SECL in Raigarh District of Chhattisgarh - Regarding. Reg.No. FP/CG/MIN/16237/2015.

MAP PREPARED FOR:-
1. Revenue
2. Forest
3. Non-forest
4. Water
5. Other

Prepared and Printed by:- GIS Cell
Forest Management Information System Division, Raipur

Prepared and Printed by:- GIS Cell
Forest Management Information System Division, Raipur

