

**Field inspection notes of Sri Ch. Santhi Swaroop, S.F.S, Divisional Forest Officer (T),  
Srikakulam on 15.07.2018**

Inspected the proposed Compensatory Afforestation area in Sy.no.162/1, Sunkidi Village, Somepta Mandal along with Forest Range Officer and his staff and user agency on 15.07.2018 and taken the following GPS Co-ordinates in lieu of diversion of 2.40 ha Forest Land in Pothukonda RF in Visakhapatnam Division for development of Sri Sri Sri Bhuvaneswari Devi Aaradhanapeetam in favour of OM Bhuvaneswari Sanstan Trust, Visakhapatnam.

Sl. No.	Latitude	Longitude
1	18.93904	84.50725
2	18.93910	84.50663
3	18.93926	84.50607
4	18.94103	84.50712
5	18.94090	84.50803
6	18.93995	84.50764
7	18.93942	84.50738

After taken GPS co-ordinates, the Compensatory Afforestation area comes to an extent of 2.50 ha. The area is suitable for Afforestation with any species and there is no endangered and unique species of flora and fauna.

  
Divisional Forest Officer  
Srikakulam



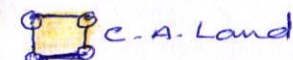
LOCATION MAP OF 2.50 HAC CA LAND NEAR BY RAMAKRISHNAPURAM VSS LIMITS, JALANTHRAKOTA RF,  
COMPARTMENT NO-84, SUNKIDI BEAT, MANDASA SECTION OF KASIBUGGA RANGE



SCALE - 1:12000

SINO	LAT	LONG
1	18.93904	84.50725
2	18.93910	84.50663
3	18.93926	84.50607
4	18.94103	84.50712
5	18.94090	84.50803
6	18.93995	84.50764
7	18.93942	84.50738

A. Babu  
ASO  
Sunkidi beat

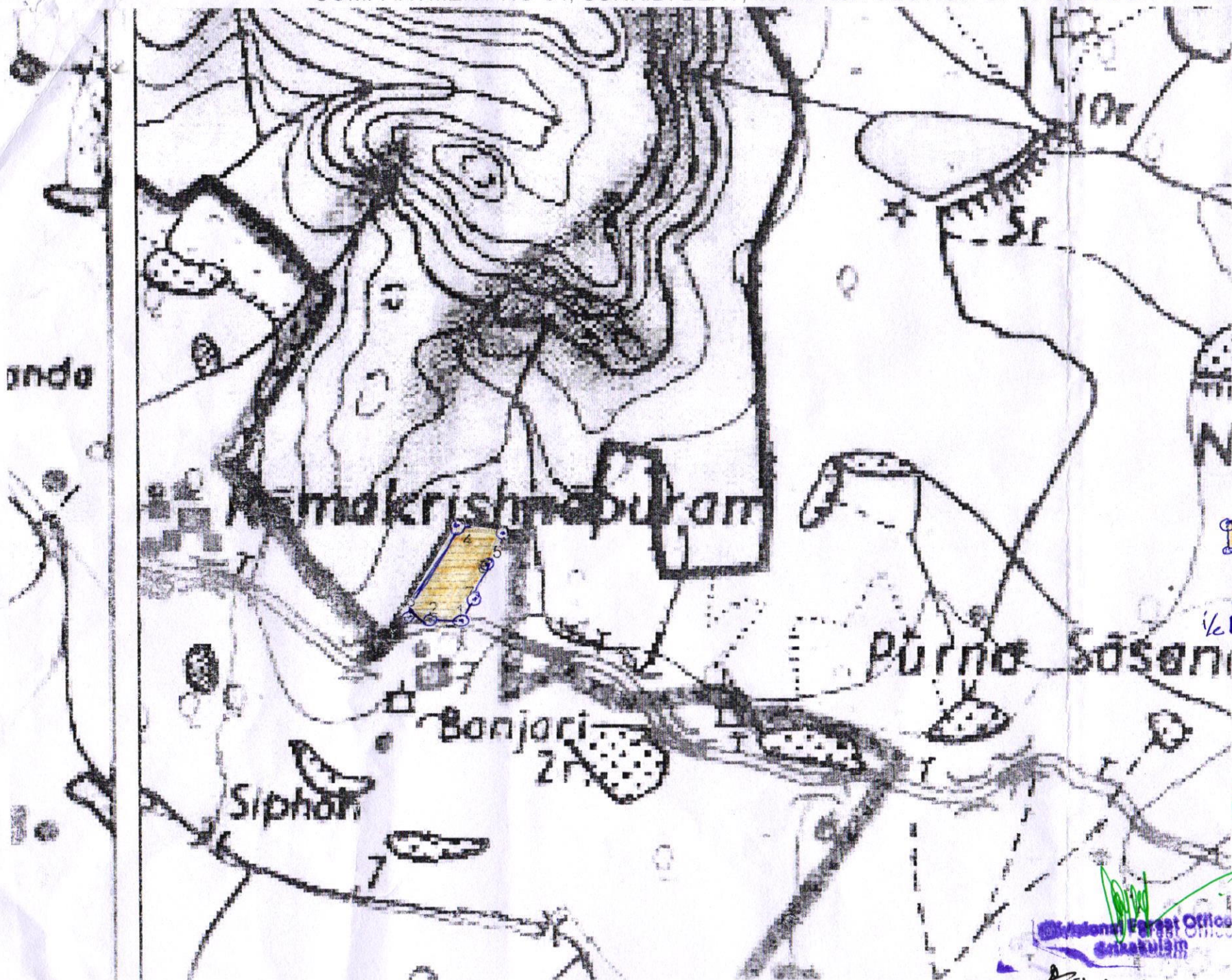


B. Suresh  
1/c Dy. Forest Range Officer  
MANDASA

E. Suresh  
Forest Range Officer  
Kasibugga

Divisional Forest Officer  
Kasibugga

A. Babu





1070-80-57 107107  
A 107107

100