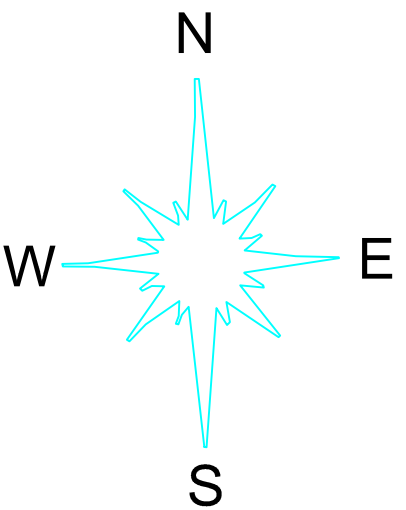
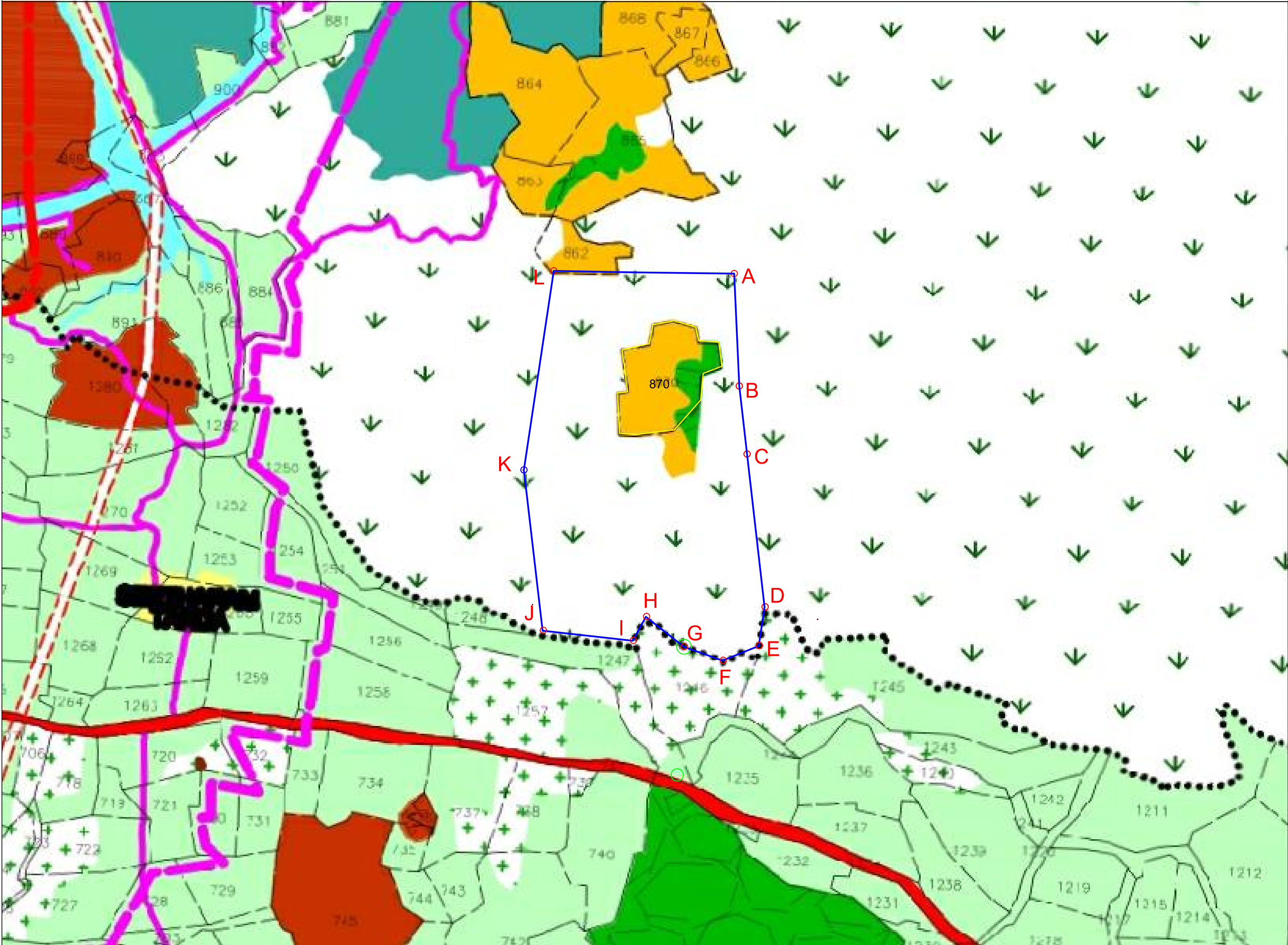


VILLAGE MAP OF CA LAND PROPOSED AREA FOR ABVZP SY.NO:871(P) AT VENKATAPURA VILLAGE, HOSPET TALUK, BALLARI DISTRICT.

CA LAND EXTENT :- 57.00 Ha.



SCALE :- 1cm = 79.20 m

Datum: WGS - 84		
Corner	Northing	Easting
A	N 15° 18' 57.0"	E 76° 31' 17.3"
B	N 15° 18' 47.1"	E 76° 31' 17.7"
C	N 15° 18' 41.0"	E 76° 31' 18.4"
D	N 15° 18' 27.6"	E 76° 31' 19.8"
E	N 15° 18' 24.2"	E 76° 31' 19.3"
F	N 15° 18' 22.9"	E 76° 31' 16.0"
G	N 15° 18' 24.2"	E 76° 31' 12.5"
H	N 15° 18' 26.8"	E 76° 31' 09.1"
I	N 15° 18' 24.7"	E 76° 31' 07.9"
J	N 15° 18' 25.7"	E 76° 30' 59.7"
K	N 15° 18' 39.8"	E 76° 30' 58.2"
L	N 15° 18' 57.3"	E 76° 31' 01.0"

GPS READING OF EXISTING REVENUE POINTS

Datum: WGS - 84		
POINTS	Northing	Easting
RPT-1	N 15° 18' 24.2"	E 76° 31' 12.5"
RPT-2	N 15° 18' 12.6"	E 76° 31' 11.8"



Executive Director and
Deputy Conservator of Forests
Atal Bihari Vajpayee Zoological park
Kamalapura, Hosapete Tq. Bellary Dist