

**NOT FOR EXPORT**



OPEN SERIES  
MAP

**No. G43A4**

Scale 1:50,000

|                               |       |       |
|-------------------------------|-------|-------|
| G42F15                        | G43A3 | G43A7 |
| G42F16<br>Jaipur<br>RAJASTHAN | G43A4 | G43A8 |
| G42L13                        | G43G1 | G43G5 |

1 Bikāner, RĀJASTHĀN.

**भारतीय सर्वेक्षण विभाग**

SURVEY OF INDIA

**1st Edition 2007.**

**Price : Rs. 50/-**

### CONVENTIONAL SYMBOLS

|   |  |  |  |  |
|---|--|--|--|--|
| Springs highway; with box, with bridge; with distance stone               |  |  |  |  |
| Roads, detailed: according to Importance .....                            |  |  |  |  |
| Roads, double carriage-way; according to Importance .....                 |  |  |  |  |
| Unimproved roads, Cart-road, Pack-track; with Pass, Foot-path .....       |  |  |  |  |
| Streams; with track in bed; unfurrowed, Canal .....                       |  |  |  |  |
| Dams: masonry or rock-filled; earthen; Wall .....                         |  |  |  |  |
| River: dry; with water channel; with bank; Tidal river .....              |  |  |  |  |
| Swampy rivers, brook, Swamps, Rivers .....                                |  |  |  |  |
| Wells: lined, Unlined, Tube-well, Spring, Tanks; perennial; dry .....     |  |  |  |  |
| Embankments: raised or sink; banks, Broken ground .....                   |  |  |  |  |
| Bridges, broad gables; small, single with station; under control .....    |  |  |  |  |
| Railways, other gauges: double, single with distance stone; do.           |  |  |  |  |
| Mixed line or tramway, Kiln, Grange with tunnel .....                     |  |  |  |  |
| Crests with sub-stations, Rocky slopes, Cliffs .....                      |  |  |  |  |
| Sand features: (a) flat, (2) sand-hills permeated, (3) dunes (all three)  |  |  |  |  |
| Towns or Villages: Inhabited; deserted, Fort .....                        |  |  |  |  |
| Huts: permanent; temporary, Tower, Antenna, Graves .....                  |  |  |  |  |
| Temples, Church, Church, Mosques, Lights, Tombs .....                     |  |  |  |  |
| Lighthouse, Lighthouses, Buoy, lighted; unlighted, Anchorage .....        |  |  |  |  |
| Mine, Vine on trellis, Glass, Scrub .....                                 |  |  |  |  |
| Pines: palm-tree, other, Plantain, Conifer, Bamboo, Other trees .....     |  |  |  |  |
| Areas: cultivated; wooded, Surveyed tree .....                            |  |  |  |  |
| Boundary, International .....   |  |  |  |  |
| states; demarcated; undemarcated .....                                    |  |  |  |  |
| district; sub-district; rural; or estate; forest .....                    |  |  |  |  |
| Boundary, pillars; surveyed; indicated; village information .....         |  |  |  |  |
| Height, thousand; water; point; approximate .....                         |  |  |  |  |
| Barbed-wire; roadside; tertiary; canal .....                              |  |  |  |  |
| Post office, Telegraph office, P & T office, Overhead tank .....          |  |  |  |  |
| Rail houses or inspection buildings, Circular house, Police station ..... |  |  |  |  |
| Carping ground or Forest; reserved; protected .....                       |  |  |  |  |
| Speed names: administrative; locally or official .....                    |  |  |  |  |
| Hospital, Dispensary, Veterinary hospital .....                           |  |  |  |  |
| Aerodrome, Helipad, Tourist site .....                                    |  |  |  |  |
| Power Line; with pylons surveyed; with poles unsurveyed .....             |  |  |  |  |

परियोजना निदेशक/Project Director  
गाराप्रा प.का.ई., बीकानेर/NHAI, PIU, Bikaner

**NOTES :-**

A relative height, e.g.,  $E_T$ , represents the approximate height, in metres, between the top and bottom of a steep slope.


Tanks, shown dry, in this area usually contain water from July to September.

Tub-wells are numerous throughout the sheet, only the important ones have been shown.

Most of the unlined well symbols indicate covered tanks, called *Kunds*, which usually contain surface collection of rainwater.

*Diggs* is a tank which is used for collection of water.

Catheter is periodic and dependent on rainfall.

Hand pump is shown thus: . . . . 

## COMPILATION INDEX

A. Surveyed during 2000-01.

Projection - UTM Datum - WGS 84

Magnetic Variation from True North about  $\frac{1}{2}^{\circ}$  East in 2000.  
(Increasing by about 1' annually).

1:50,000

2 cm to 1 km

Motes 1000 500 0 1 2 3 Kilometres

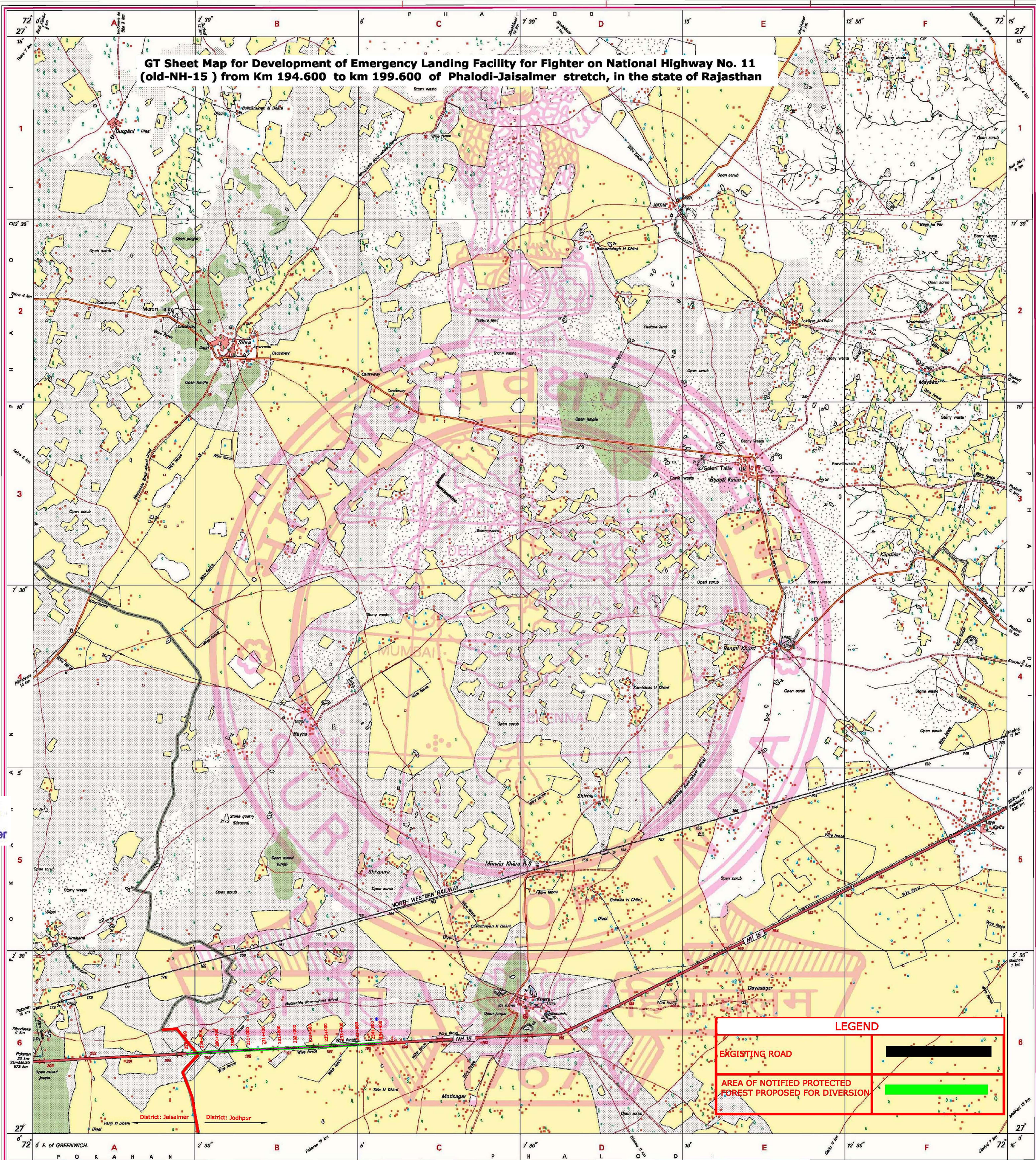
*For further details about this map, please contact*  
**Additional Surveyor General**  
**Rajasthan Geo-Spatial Data Centre**  
**Survey of India**  
**Sector 10, Vidyadhar Nagar**  
**Jaipur.**  
**Fax : 0141 - 2236891**

**WEBSITE – [www.surveyofindia.gov.in](http://www.surveyofindia.gov.in)**

*Reproduction in whole or part by any means is prohibited without the written permission of Survey of India, the National Mapping Agency.*

GOVERNMENT OF INDIA COPYRIGHT, 2002.

SCALE 1cm=63.36m



REG. No. 224 -NPG D 67 (Rajasthan GDC-1:50,000) 150%

भारत के महानिरीक्षक गेजट जनरल एम। गोपाल राव, बी।टेक., पी।जी.डिप्लो. (एरियल फोटो), एम।आई.एस.एम।, एम।सी।ए.ए., एफ।आई.एस.ए., के निदेशन में प्रकाशित,  
Published under the direction of Major General M. Gopal Rao, B.Tech., P.G.Dip. (Aerial Photo), MME, MCA, FIS, Surveyor General of India  
Survey of India, Hathiarkala Estate, Post Box No. 37, Dehra Dūn - 248001 (Uttarānchal)  
Department of Science & Technology, Government of India.

PRINTED AT THE NORTHERN PRINTING GROUP OF SURVEY OF INDIA