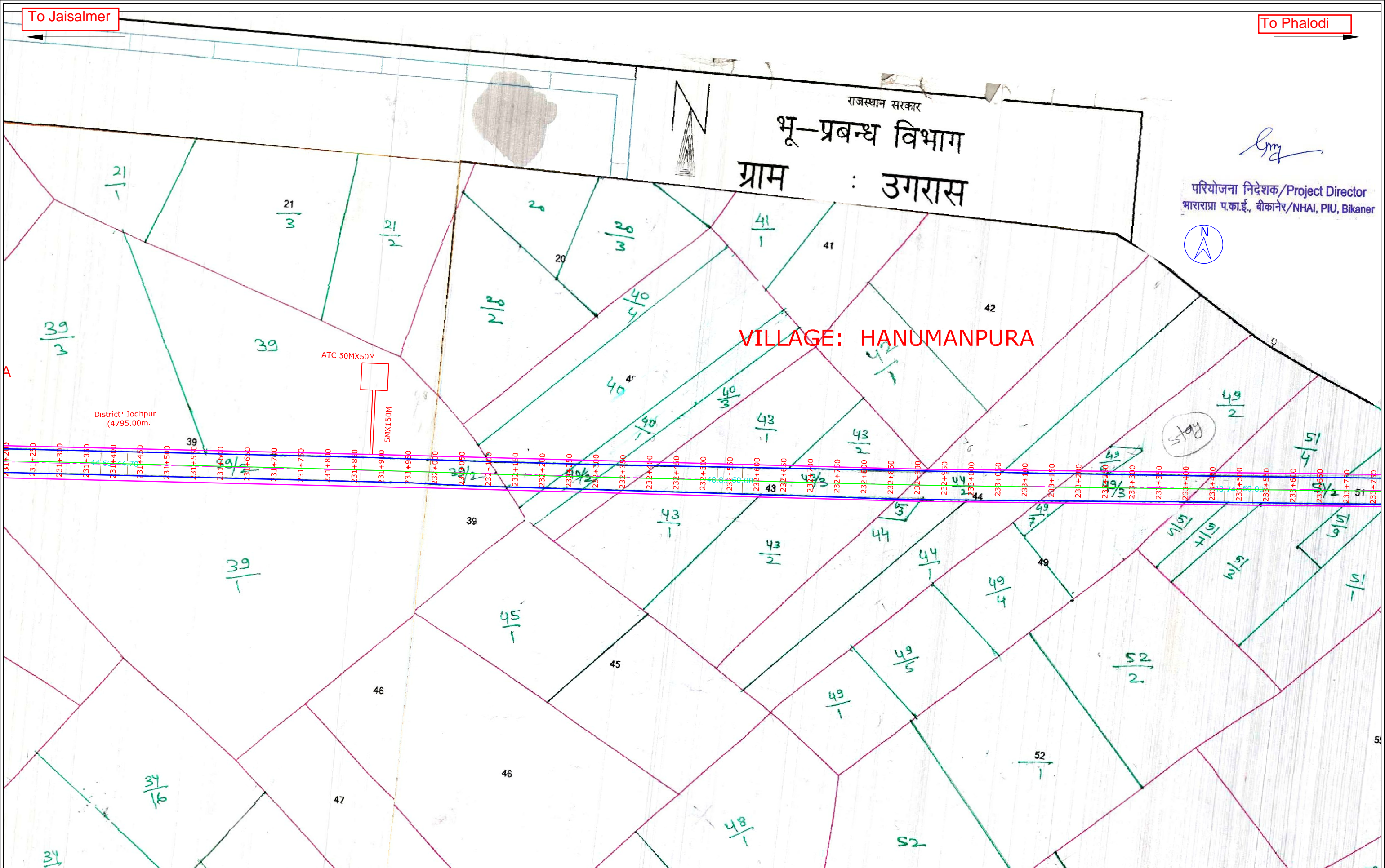
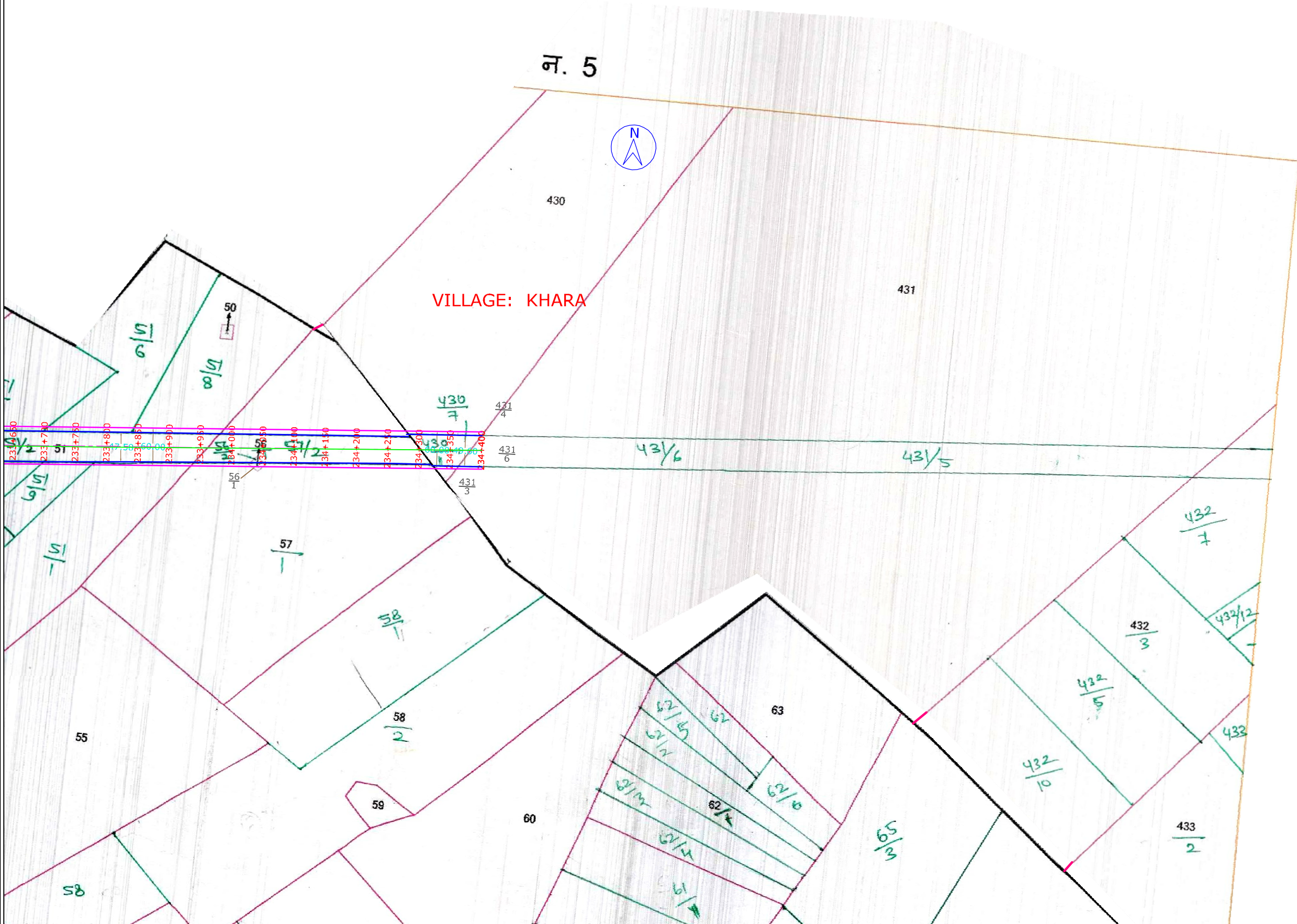


EXISTING CARRIAGEWAY					PROJECT :	CONSULTANT :	CLIENT :	Drawn By :	Ashish Sahu	TITLE : PLAN & PROFILE	
PROPOSED ROW					DEVELOPMENT OF EMERGENCY LANDING FACILITIES ON NATIONAL HIGHWAYS PHALODI - JAISALMER (NH-15), LOCATION FROM KM200+600 TO KM205+600"	Theme Engineering Services Pvt. Ltd. Jaipur (Raj.)	National Highways Authority of India	Designed By :	R. SANKHLA		
PROPOSED CARRIAGEWAY								Checked By :			
EXISTING ROW								Approved By :			
								SCALE	1cm=63.36m	DWG NO. : 01	REV : R0



EXISTING CARRIAGEWAY				PROJECT :	CONSULTANT :	CLIENT :	Drawn By :	Ashish Sahu	TITLE : PLAN & PROFILE	
PROPOSED ROW				DEVELOPMENT OF EMERGENCY LANDING FACILITIES ON NATIONAL HIGHWAYS PHALODI - JAISALMER (NH-15), LOCATION FROM KM200+600 TO KM205+600"	Theme Engineering Services Pvt. Ltd. Jaipur (Raj.)	National Highways Authority of India	Designed By :	R. SANKHLA		
PROPOSED CARRIAGEWAY							Checked By :			
EXISTING ROW							Approved By :			
							SCALE	1cm=63.36m	DWG NO. : 02	REV : R0



Rmy
परियोजना निदेशक/Project Director
भारतप्रा प.का.ई., बीकानेर/NHAI, PIU, Bikaner

EXISTING CARRIAGEWAY				PROJECT :	CONSULTANT :	CLIENT :	Drawn By :	Ashish Sahu	TITLE : PLAN & PROFILE	
PROPOSED ROW				DEVELOPMENT OF EMERGENCY LANDING FACILITIES ON NATIONAL HIGHWAYS PHALODI - JAISALMER (NH-15), LOCATION FROM KM200+600 TO KM205+600"	Theme Engineering Services Pvt. Ltd. Jaipur (Raj.)	National Highways Authority of India	Designed By :	R. SANKHLA		
PROPOSED CARRIAGEWAY							Checked By :			
EXISTING ROW							Approved By :			
							SCALE	1cm=63.36m	DWG NO. : 03	REV : R0