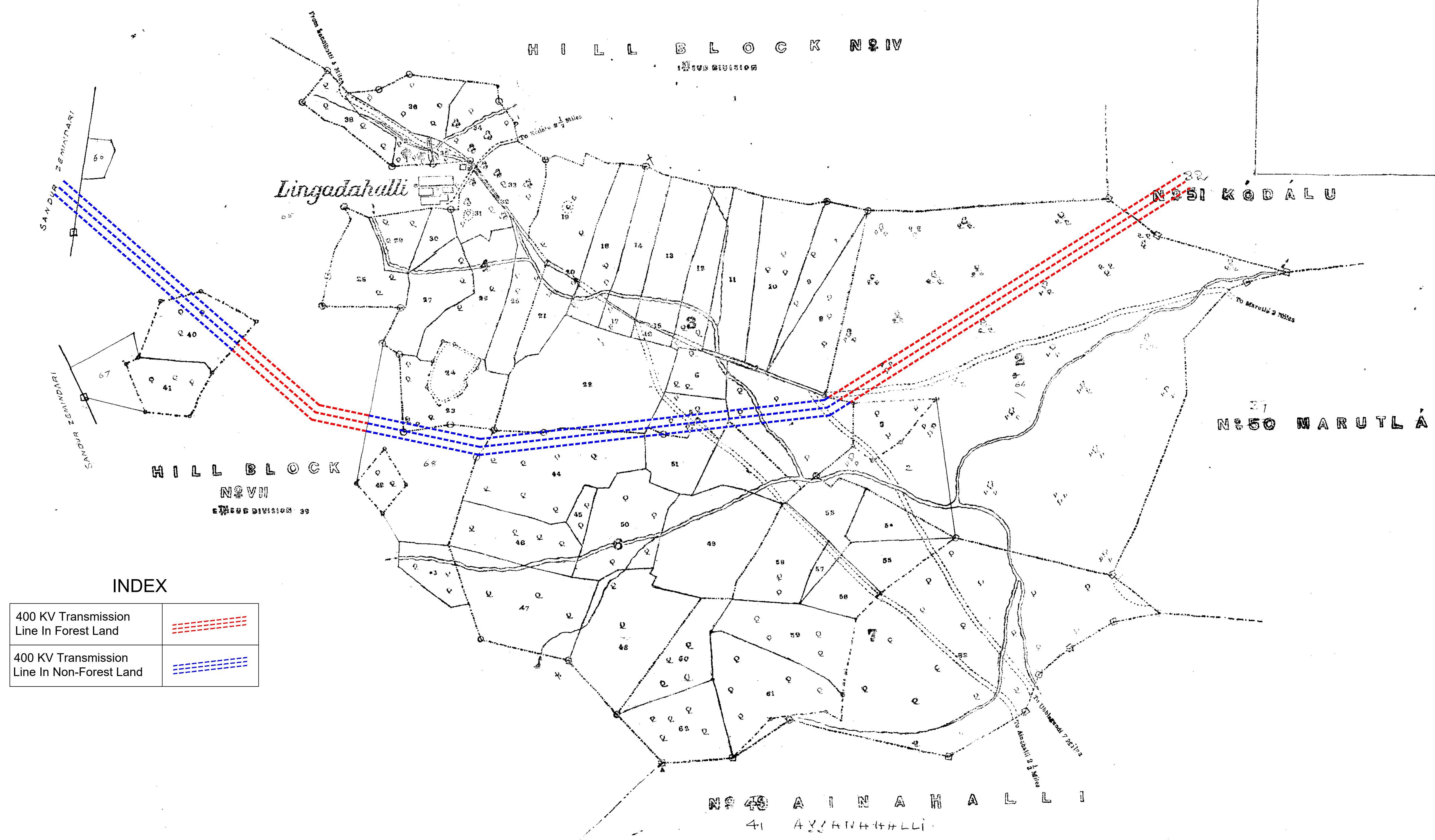
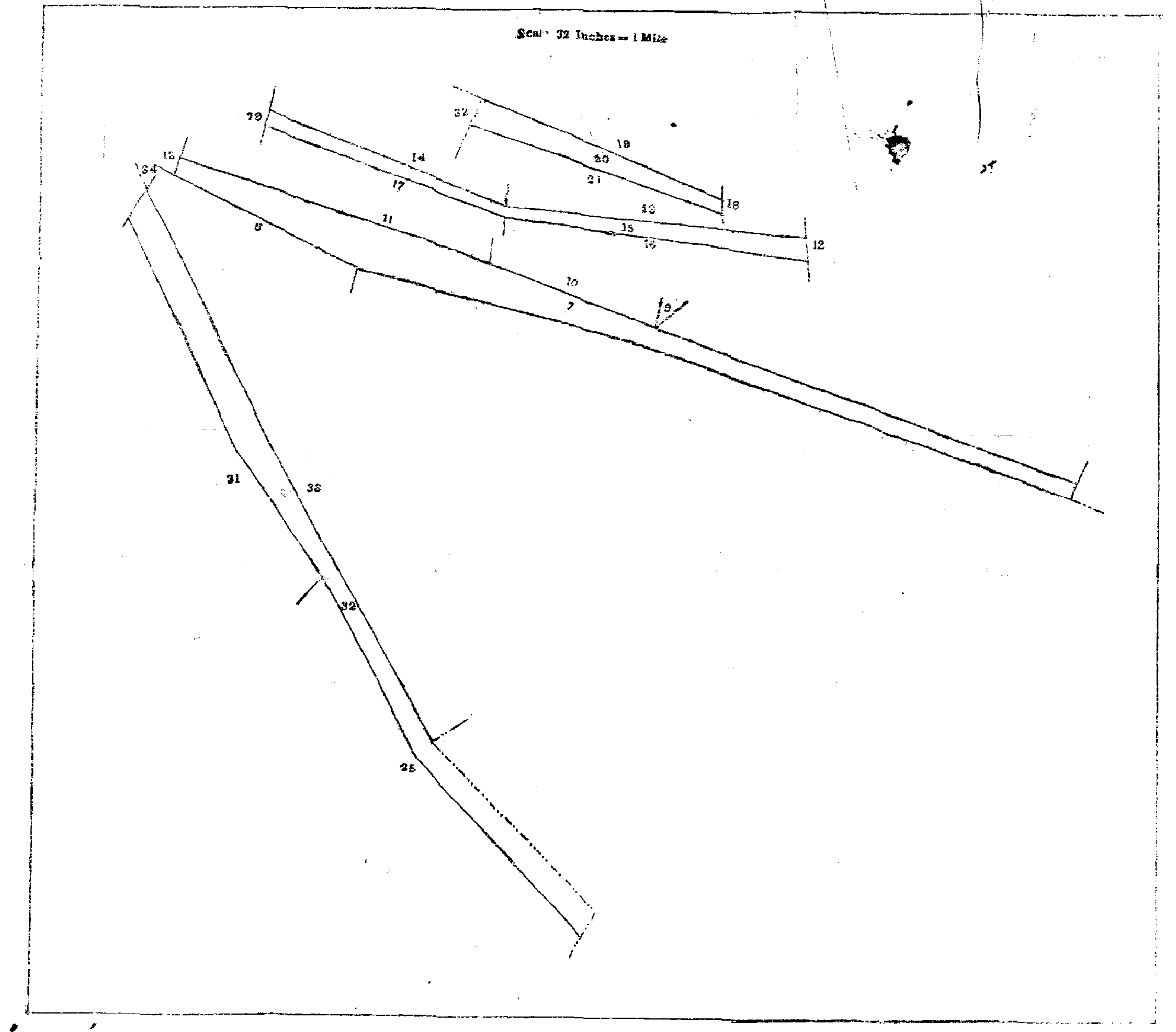


APPLICATION DRAWING FOR THE DIVERSTION OF 6.8264 Ha (Part of 23.3876 Ha) OF FOREST LAND IN SY NO. 39 & 64 OF LINGADAHALLI VILLAGE, SANDURU TALUK, BELLARY DISTRICT FOR THE PROPOSED 130.00 MW OF PUMPED STORAGE PROJECT.  
IN FAVOR OF JSW RENEWABLE ENERGY (VIJAYANAGARA) LIMITED, TORANAGALLU, BALLARI DISTRICT.

No. 5240 41 S  
BELLARY DISTRICT  
SANDUR TALUK  
LINGADAHALLI  
Area 1977 68 Acres  
Scale 8 Fiches = 1 Mile = 7920  
Index 1000



INDEX

400 KV Transmission Line In Forest Land	
400 KV Transmission Line In Non-Forest Land	

REFERENCE

	Unirrigated
	Waste
	Village Site
	Ponds
	Cattle Grazing Post
	Shrub Growth with Acreage
	Water
	Limit of Study Ground
	Image
	Vegetation
	Bare Ground
	Tamarind Trees

ಇಲ್ಲಿಯವರೆಗೆ ಅನುಮತಿಯನ್ನು ಪಡೆದಿರುವ  
ಈ ನಗರ ಯೋಜನೆಯು, ಅನುಮತಿಯನ್ನು  
ಪಡೆದಿದೆ. ಇದನ್ನು ಸಹ ನಗರ ಯೋಜನೆಯ  
ನಿರ್ದೇಶನ.

11/11/11  
ಶ್ರೀ ಮಹೇಶ್ವರ ಕುಮಾರ್

