

कार्यालय कार्यपालन अभियन्ता, लोक निर्माण विभाग

राष्ट्रीय राजमार्ग संभाग क्रमांक 01, पेंशन बाड़ा रायपुर (छ.ग.)

फोन नं. 07771-4051036 ई.मेल. eenhdn_1@rediffmail.com

चेक लिस्ट क. 05

प्राप्त्यावर्तित हेतु प्रस्तावित वन क्षेत्र का सर्वे ऑफ इण्डिया का मूल टोपोशीट
1:50000 स्केल पर

सर्वे ऑफ इण्डिया का मूल टोपोशीट (स्केल 1:50000) पर संलग्न है।



(बी. श्रीनिवास राव)
कार्यपालन अभियन्ता लोक निर्माण विभाग
राष्ट्रीय राजमार्ग क्र.1 रायपुर (छ.ग.)



(एस. पी. पैकरा)
वन संरक्षक
प्रभारी वन मंडलाधिकारी
बालोद वनमंडल, बालोद

No. F44U14

Scale 1:50,000

2	F44U9 (64D/9)	F44U13 (64D/13)	F44V1 (64H/1) Dung CHHATTISGARH
1	F44U10 (64D/10)	F44U14 (64D/14) Raj Nandgaon CHHATTISGARH	F44V2 (64H/2)
1	F44U11 (64D/11)	F44U15 (64D/15)	F44V3 (64H/3) Kanker CHHATTISGARH

1 Garhchiroli, MAHARASHTRA
2 Gondia, MAHARASHTRA

भारतीय सर्वेक्षण विभाग SURVEY OF INDIA

1st Edition 2012. Price : Rs. 77/-

CONVENTIONAL SYMBOLS

- Express highway: with toll; with bridge; with distance stone
Roads, metalled: according to importance
Roads, double cartway: according to importance
Unmetalled road: Cart-track: Pack-track with pass, Foot-path
Streams: with track in bed; underlined: Canal
Dams: masonry or rock-filled; earthwork; Weir
River: dry with water channel; with island & rocks. Tidal river
Submerged rocks. Shoal. Swamp. Reeds
Wells: lined; unlined. Tube-well. Spring. Tank. Perennial; dry
Embankments: road or rail; tank. Broken ground
Railways: broad gauge: double; single with station; under constr.
Railways: other gauges: double; single with distance stone; do.
Mineral line or tramway. Kin. Cutting with tunnel
Contours with sub-features. Rocky slopes. Cliffs
Sand features: 1 flat. 2 (sand-hill) permanent. 3 (dunes) shifting
Towns or Villages: inhabited; deserted; Fort
Huts: permanent; temporary. Tower. Antiquities
Temple. Obelisk. Church. Mosque. Jagah. Tomb. Grave
Lighthouse. Lightship. Buoy: lighted; unlighted. Anchorage
Mine: Vise on trellis. Grass. Scrub
Palms: palmyra; other. Plantain. Canebrake. Bamboo. Other trees
Areas: cultivated; wooded. Surveyed tree
Boundary: international
state: demarcated; undemarcated
district: subdivision; tahsil or taluk; forest
Boundary pillars: surveyed; unsurveyed
Heights: triangulated; station; point: approximate
Bench-mark: geodetic; levelling; canal
Post office: Telegraph office: Overhead tank
Rest house or inspection bungalow. Circuit house. Police station
Camping ground. Forest: reserved; protected
Spaced names: administrative; locality or tribal
Hospital. Dispensary. Veterinary. Hospital / Dispensary
Aerodrome. Helipad. Tourist site
Power line: with pylons surveyed; with poles unsurveyed

REFERENCE

PWD Public Works Department.

NOTES :-

Heights are in metres and above Indian mean sea level.
Contours are approximate.
A relative height, e.g. 80 represents the approximate height, in metres, between the top and bottom of a steep slope.
Tanks shown dry in this area usually contain water from July to December.
The exterior boundaries of areas of Reserved or Protected Forests are shown by green ribbons.
The area appearing in squares A6, B6, C6, D6, E6 and F6 of this map is magnetically disturbed and the variation given may differ largely from the actual value.

COMPILATION INDEX

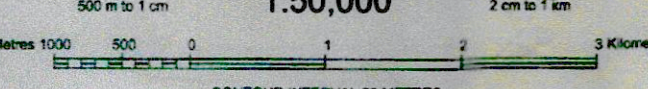
A Surveyed during 1974-75. Updated for major details during 2005-06.



Projection - UTM Datum - WGS 84

Magnetic Variation from True North about 1/2° West in 2005.
(Decreasing by about 1' annually).

1:50,000



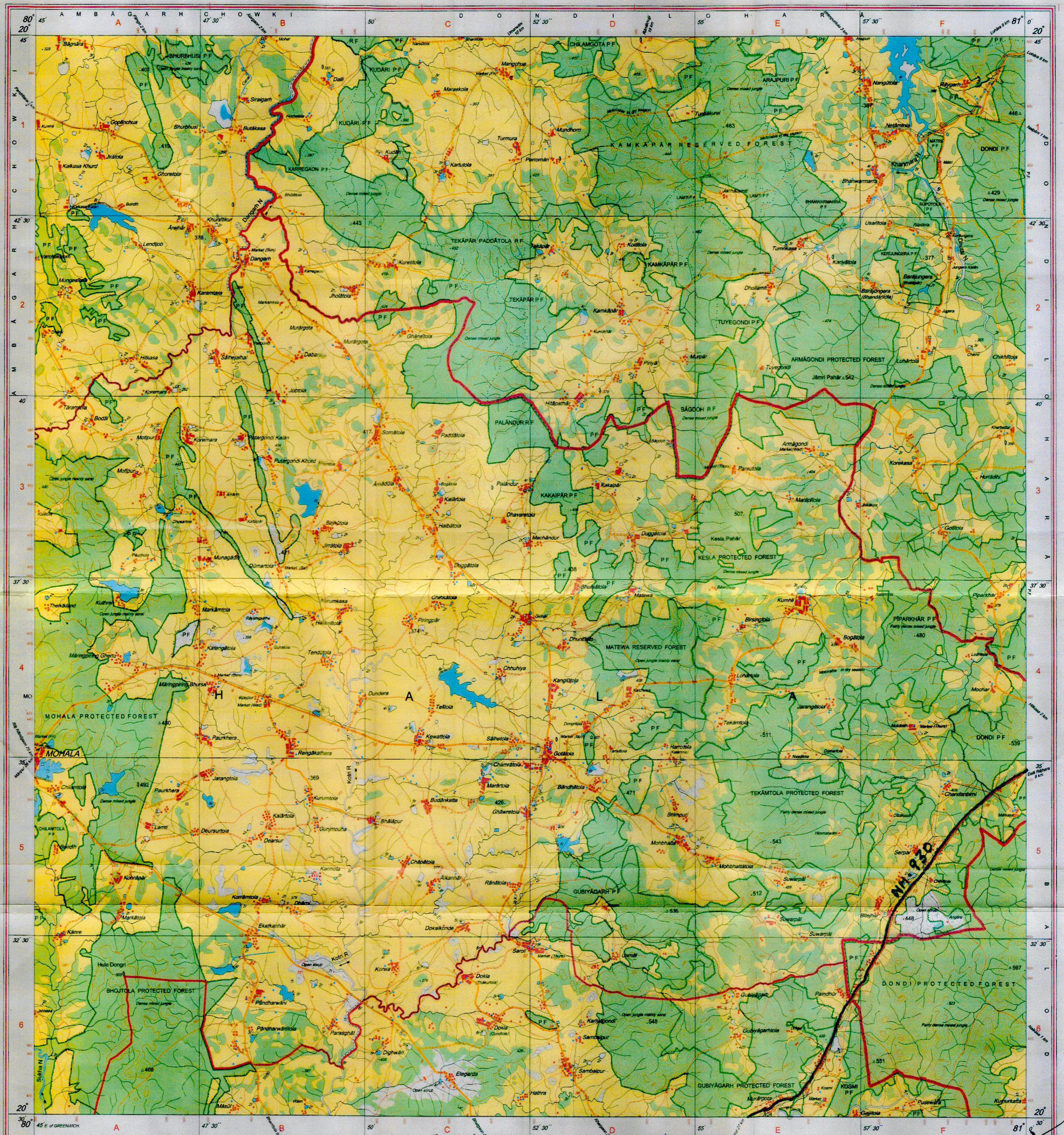
CONTOUR INTERVAL 20 METRES

For further details about this map, please contact
Director
Chhattisgarh Geo-Spatial Data Centre
Survey of India, Pachpedi Naka
Raipur.

WEBSITE - www.surveyofindia.gov.in

Reproduction in whole or part by any means is prohibited
without the written permission of Survey of India, the
National Mapping Agency.

GOVERNMENT OF INDIA COPYRIGHT 2012.



REG. No. 9395-SPG D 10 (Chhattisgarh GDC-1:50,000)-1015 '12.

वन परिक्षेत्र अधिकारी
दल्ली राजहरा

भारत के सर्वेक्षण विभाग के द्वारा तैयार किया गया, के निदेशन में प्रकाशित,
Published under the direction of Dr. Swarna Subba Rao, Surveyor General of India,
Survey of India, Hishikherkote Estate, Post Box No. 37, Dehra Dun - 248001 (Uttarakhand),
Department of Science & Technology, Government of India.

वन परिक्षेत्र अधिकारी
डोण्डी

Executive Engineer
N.D.N. 1, PWD, Raipur

वन परिक्षेत्र अधिकारी
कलकत्ता

वन परिक्षेत्र अधिकारी
कलकत्ता

PRINTED AT THE SOUTHERN PRINTING GROUP OF...



निर्यात के लिए नहीं NOT FOR EXPORT

OPEN SERIES
MAP

No. F44V2

Scale 1:50,000

F44U13 (64D13)	F44V1 (64H1)	F44V5 (64H5)
F44U14 (64D14)	F44V2 (64H2)	F44V6 (64H6)
F44U15 (64D15)	F44V3 (64H3)	F44V7 (64H7)

1 Dhamtari, CHHATTISGARH.

भारतीय सर्वेक्षण विभाग

SURVEY OF INDIA

1st Edition 2011.

Price: One hundred eighteen Rupees.

CONVENTIONAL SYMBOLS

Express highway: with toll: with bridge: with distance stone	
Roads, metalled: according to importance	
Roads, double carriageway: according to importance	
Unmetalled road: Cart-track: Pack-track with pass: Foot-path	
Streams: with track in bed: underdrain: Canal	
Dam: masonry or rock-filled: earthenwork: Weir	
River: dry with water channel: with island & rocks: Tidal river	
Submerged rocks: Shoal: Swamp: Reeds	
Wells: lined: unlined: Tube-well: Spring: Tank: Permanent: dry	
Embankment: road or rail: tank: Broken ground	
Railways: broad gauge: double: single with station: under construction	
Railways: other gauges: double: single with distance stone: do	
Mineral line or tramway: K.M. Cutting with tunnel	
Contours with sub-features: Rocky slopes: Cliffs	
Sand features: (1) flat: (2) sand-hill: (3) dune: (4) shifting	
Towns or Villages: inhabited: deserted: Fort	
Huts: permanent: temporary: Tower: Antiquities	
Temple: Chhatra: Church: Mosque: Idgah: Tomb: Graves	
Lighthouse: Lightship: Buoys: lighted: unlighted: Anchorage	
Mine: Vein on track: Grass: Scrub	
Palms: palmry: other: Plantain: Conifer: Bamboo: Other trees	
Areas: cultivated: wooded: Surveyed tree	
Boundary: international	
state: demarcated: undemarcated	
district: subdivision: taluk or block: forest	
Boundary pillars: surveyed: unlocated	
Heights: triangulated: station: point: approximate	
Bench-mark: geodetic: tertiary: canal	
Post office: Telegraph office: Overhead tank	
Rail house or inspection bungalow: Circuit house: Police station	
Camping ground: Forest: reserved: protected	
Spaced names: administrative: locality or tribal	
Hospital: Dispensary: Veterinary: Hospital / Dispensary	
Aerodrome: Helipad: Tourist site	
Power line: with pylons surveyed: with poles unsurveyed	

REFERENCE

PWD: Public Works Department.

NOTES:-

Heights are in metres and above Indian mean sea level.
Contours are approximate.
A relative height, e.g., 100, represents the approximate height, in metres, between the top and bottom of a steep slope.
The exterior boundaries of areas of Reserved or Protected Forests are shown by green ribbons.
Permission to use the roads along canals is required from the Irrigation authorities.
The common boundaries of reserved forests between Sangrāsār R.F., Mulle Amābhāra R.F., Gopāl R.F., Orgāon Pāṭeli R.F., Kurkut R.F., and Putarwāhī R.F. in squares C11, 2, 3 have not been shown for want of reliable information.
A relative height, e.g., 100, marked along a canal, indicates the height of the top of the canal embankment above the adjacent country.
The kilometre stone numbers along roads, railway canals are shown in slant type, e.g., 5; whereas kilometre numbers are shown in upright type, e.g., 5.

COMPILATION INDEX

A. Surveyed during 1976-77. Updated for major details during 2003-04.

Projection - UTM Datum - WGS 84

Magnetic Variation from True North about 4° West in 2005.
(Decreasing by about 1° annually).

1:50,000

500 m to 1 cm
2 cm to 1 km
Kilometres

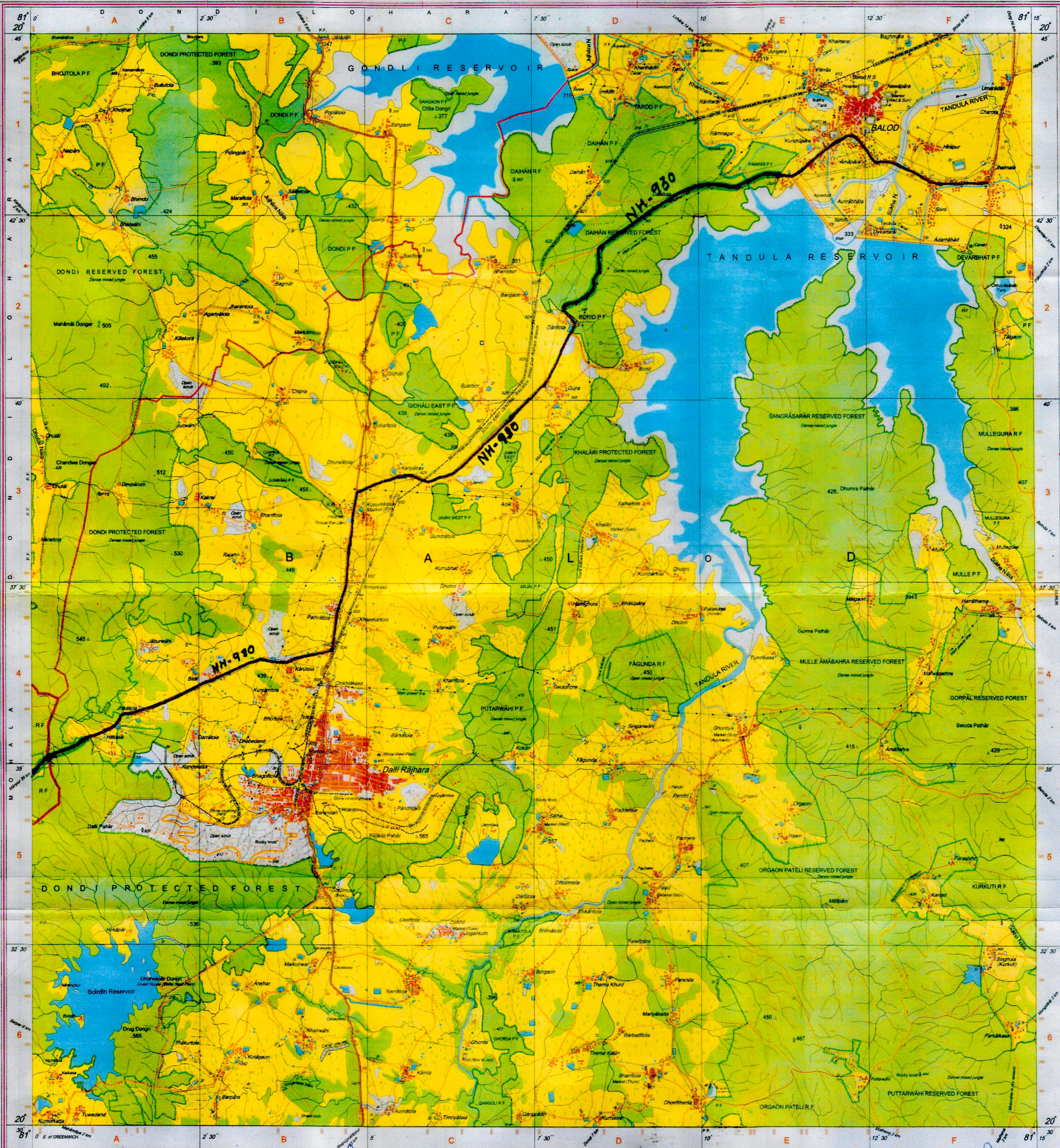
CONTOUR INTERVAL 20 METRES

For further details about this map, please contact
Director
Chhattisgarh Geo-Spatial Data Centre
Survey of India, Pachpedi Naka
Raipur.

WEBSITE - www.surveyofindia.gov.in

Reproduction in whole or part by any means is prohibited
without the written permission of Survey of India, the
National Mapping Agency.

GOVERNMENT OF INDIA COPYRIGHT, 2011.



वन परिक्षेत्र अधिकारी
दल्ली राजहंस

भारत के सर्वेक्षण विभाग के स्वर्ण सदा पाप के निदेशन में प्रकाशित,
Published under the direction of Dr. Swarna Sada Paap, Surveyor General of India,
Survey of India, Hathibarka Estate, Post Box No. 37, Dehra Dun - 248001 (Uttarakhand),
Department of Science & Technology, Government of India.

Executive Engineer
NH.Dn. 1, PWD, Raipur

वन परिक्षेत्र अधिकारी
बालोद परिक्षेत्र

वन परिक्षेत्र अधिकारी
उप वनमंडल दल्ली

वन परिक्षेत्र अधिकारी
उप वनमंडल बालोद

PRINTED AT THE EASTERN PRINTING GROUP OF SURVEY OF INDIA